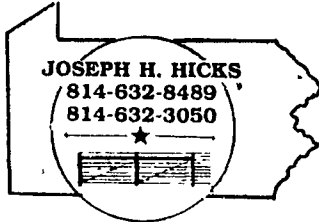


**CENTRAL HIGH TENSILE**



JOSEPH H. HICKS  
814-632-8489  
814-632-3050

**FENCE CONSTRUCTION**

**Engine Parts Gaskets**

**Cylinder Heads  
Rebuilt or Exchange  
Engine Rebuilding  
Spring Garden Repair**

RD 1, Box 204  
Kinzer, PA 17535

**Silage Covers**  
40x100x6 mil white tri-layer \$130  
50x100x6 mil White tri-layer (by order)  
32x100x6 mil. black, \$70  
40x100x6 mil. black, \$90

**Sunfilm Stretch Wrap**  
20"x6000"x1 mil. white  
1-5, \$73/roll 5-10, \$72/roll  
11-20 \$71/roll 21 Up \$70/roll

**Special Repair Tape**  
Black or White  
3"x105', \$7/roll 3"x175', \$12/roll  
Authorized Dealer For

**Silawrap Machines**  
(high moisture round bale wrapper)  
**Welger Round Baler**

\*\*\*\*\* **Martin's Custom** \*\*\*\*\*  
(717) 369-5702

JD 7000 conservation 4 row planter w/liquid fertilizer & frame mounted coulters & unit mounted coulters w/ population monitor & extra parts.  
**\$4,850/OBO**  
Call Early Mornings or Evenings till 7 p.m.  
**717-949-3074**  
or  
**703-879-9926**

**COLLECTORS CORNER**

**JOHN DEERE'S**

- (3) 830's
- (8) 730's
- (3) 630's
- (2) 530's
- (2) 435's
- (4) 430's
- (4) 820's
- (4) 720's
- (3) 620's
- (3) 520's
- (3) 420's
- (3) 320's
- (4) 80's
- (2) 70's
- (3) 60's
- 50
- (3) 40's
- (8) A's
- (6) B's
- (4) D's
- (3) G's & GM's
- (5) H's
- (6) L's, LA's, LI's
- (5) M's, MT's
- (2) R's
- 4020 P.S. High Crop
- (2) 440 Crawler's

**OTHERS**

- Case VAC- WF- 3 Pt.
- (2) Case 400 HI Crop
- Case 830 HI Crop
- Ford 2000-100 Hours
- (2) Ford 8N- 1 Has 400 Hours
- Farmall 560- 1500 Hours
- IH Spirit Lawn & Garden w/Tools
- Ferguson 35- New
- Oliver 1550 HI Crop
- Oliver 1650 HI Crop
- Oliver Super 77 HI Crop
- Oliver 60
- Oliver 66
- (2) Oliver Super 77
- (2) Oliver HG Crawler

1930 JD "D" On Full Factory Steel, Motor Is Loose, Good Restoration Project.

**\$1900.00**



**WENGBERS INC.**

251 SOUTH RACE STREET, MYERSTOWN, PA 17067

**HOURS:**  
Mon.-Fri.  
7:30 To 5:00  
Saturday  
7:30 To Noon

**717-866-2130**

(Days)

Or

**717-866-7147**

(After 5:30 P.M.)



JD 310A, Good Condition..... \$9,000



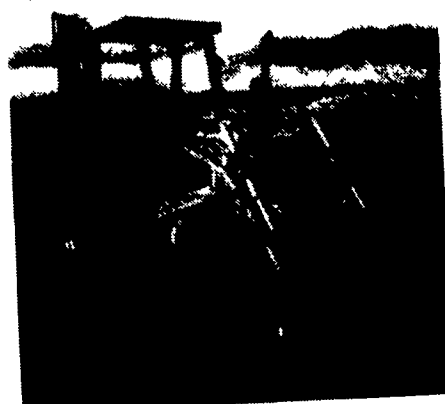
Cat 951B New Pins & Bushings, New Roller Shell \$12,000



Cat 955K Good Condition \$13,000



JD 440, GM Diesel, Mechanical Angle \$3,000



Case 480B, Extendahoe \$7,500



Case 580B, Rebuilt Motor \$8,000

- Case 1150 4-Way Blade \$6,000
- Case 580B Backhoe, new motor \$8,000
- Case 480B, backhoe w/extend-a-hoe, new paint, good cond. \$7,500
- Case 450 Crawler ldr., needs work, \$3,200
- (2) JD 450 Crawler loader, like new U/C, Choice for \$8,500
- JD 310 loader backhoe, w/new engine overhaul \$7,000
- JD 310A loader backhoe, \$9,000

- JD 9300 Backhoe Attachment, \$3,000
- JD 93 Backhoe Attachment, \$2,000
- Cat 955K crawler loader, good condition \$13,000
- Cat 951 B new pins & bushings, new roller shells \$12,000

**J & F Equipment**  
(717) 859-3283  
No Reasonable Offer Refused

**Best Buys in Used Equipment**

**TRACTORS**

- AC D17
- IH 986
- IH 1466
- IH 1586
- IH 485
- IH 3688
- IH 1486
- IH 484 w/Loader
- (2) IH 3588
- IH 3488 Hydro
- IH 886
- IH 966
- \* JD 1020
- JD 2630
- JD 3155 MFD
- JD 4230
- JD 4640
- JD 3020
- JD 4440
- JD 7020
- MF 1100
- MF 1155
- MF 2675
- Case IH 7110
- Case 2290
- \* Case IH 1840 Skid Steer
- Case IH 4890
- Case IH 7110 MFD
- Case IH 7130 MFD
- Case 1835C Skid Steer
- Case 2590
- ST 210
- ST Panther II
- Farmall A
- \* NH 455 Skid Steer

**DISCS**

- Pittsburgh 19'
- Crustbuster 20'
- White 235
- Miller 20'
- JD 14'
- JD 230, 21'
- MF 14'
- MF 820, 30'
- Ford 241 22'
- Ford 230 16'
- BH 24'
- IH 14'
- IH 470
- IH 475
- IH 490, 22'
- IH 37, 10'
- IH 496, 22'
- IH 370, 12'
- KR 2416
- KR 1966 31'
- KR 4966 31'
- KR 2440
- (2) SF 20'
- SF 29'
- TW 15'

**TILLAGE**

- \* Magee 23' Field Cultivator
- Glencoe 18' Field Cultivator
- Dunham Lehr 15' Cultimulcher
- Oliver 6x18 Plow
- Brady 18' Field Cultivator
- KR 2321 Chisel Plow
- IH 22' Field Cultivator
- IH 25' Field Cultivator
- IH 16" Field Cultivator
- IH 24' Field Cultivator
- IH 165 Plow
- (2) IH 45 18' Field Cultivator
- IH 415 Cultimulcher
- IH 140 Plow 4x18
- IH 710 Plow, 7x16
- AC 7x16 On Land Plow
- MK 8R Field Cultivator
- MK 32' Field Cultivator
- JD 1100 Field Cultivator
- JD 1600 Chisel Plow
- JD 2350-2450 8x18 Plow
- BR 32' Packer
- BR TPW 14 Packer
- (2) BR 25' Packer
- BR 14' Chisel Plow
- BR 15' Cultimulcher
- BR 21' Field Cultivator
- WR 10x18 Plow

**MISCELLANEOUS**

- (2) FMC Sprayers
- Great Plains #10 Drill
- BH 3450 Loader
- John Blue Sprayer 500 Gal.
- Haybuster Tandem No-Till Drill 24'
- FD F-600 Dump Truck
- \* Hardi 260 Mower
- \* NH 56 Rake
- \* JD 15' Drill
- \* JD 8300 Drill
- (2) JD 1209 Haybine
- JD Shredder #27
- JD 737 15' Mower
- (2) JD 7000 Planter, 8 Row
- Case IH 900 Planter 6RN
- \* IH 33 Loader
- (2) IH 6200 Drills
- IH 10 Drill, 18x7
- IH 50 Shredder

**HAY EQUIPMENT**

- IH 46 Baler
- NH 1010 Bale Wagon
- NH 277 Baler
- NH 90 Bale Stacker
- NH 488 Mower Conditioner

**COMBINES**

- Gleaner LKS
- Gleaner N6
- Gleaner M2
- Case Int. 1660
- (3) Case IH 1680
- (3) IH 1460
- IH 715
- JD 9600
- JD 8820 MFD
- JD 6620
- JD 6600
- (2) JD 7720 4WD
- MF 760
- (2) MF 750

Large Selection Of Cornheads And Platforms Available  
\* Just Traded



(302) 378-9555 1-800-341-4028

