

Philadelphia Vegetables

Philadelphia, Pa.

Wednesday, June 26, 1991

ARTICHOKE OFFERINGS INSUF TO QUOTE.
ASPARAGUS LOWER WA 30-lb crt WAExFcy lge & std 38.00-40.00 mos 40 00 few 35.00 bchd lge & std 40.00 CA 30-lb ctn lge 38.00 std 38.00-40.00.
BEANS OFFERINGS LIGHT various bu containers Round Green type unless otherwise stated NJ few 19.00-20.00 fair qual 12.00-15.00 fair cond 5.00-6.00 CA Fava type 15.00- 20.00 few loas 12.00.
BEETS NJ crt bchd 12s 4.50-6.00 mos 5 00 NC crt lse 6.00.
BROCCOLI ABOUT STEADY CA ctn bchd 14s 8.00-9.00 18s 8.50-9.00.
BRUSSEL SPROUTS NO OFFERINGS.
CABBAGE ABOUT STEADY 1-3/4 buctn & crt med green unless otherwise stated NJ 6.00-8.00 mos 7.00-7.50 fair cond loas 6.00 Red 12.00 NC 7.00-8.00 Red 8.00 Savoy 6.00 CA 45# ctn Red 15.00-16.00.
CARROTS OFFERINGS LIGHT 48-1 lb film bags in film sacks CA med-lge 9.00-11.00 50-lb sacks loose jumbo CA 15.00-16.00 few 18.00 bchd 11.50 miniature type CA ctn bchd 24s 11.50-12.00.
CAULIFLOWER HIGHER CA ctn film wrpd 9s 9.00-10.00 mos 9.00 few 7.00 12s 9.00-11.00 few 12.00 16s 10.50.
CELERY OFFERINGS LIGHT CA ctn 1-1/2 doz 14.00-15.00 2 doz 14.00-17.00 mos 15.00-16.00 2-1/2 doz 15.00-17.00.
CHINESE CABBAGE CA 50-lb ctn Bok Choy 14.00-15.00 Nappa 17.00-18.00.
CORN ABOUT STEADY wirebound crt 48 ears min unless other wise stated FL White 12.00 fair cond 8.00-9.00 Yellow 9.00 GA Yellow small 9.00-10.00 NC White 12.00- 13.00 fair qual 10.00 fair cond 5.00-8.00 Yellow fair qual & cond 5.00-9.00.
CUCUMBERS ABOUT STEADY 1-1/9 bucrts & ctns waxed medium unless otherwise stated NC fair appear 8.00-10.00 mos 8.00 fair qual 5.00-6.00 few loas 3.00 fair cond 3.00-5.00 lge 3.00 NJ Pickles unwxd lge 5.00 VA 8.00 fair appear 8.00.
DAIKON CA crt 17.00-20.00.
EGGPLANT ABOUT STEADY GA 1-1/9 bucrts wrpd med 12.00-14.00 mos 14.00 fair cond 8.00-10.00 FL buctn wrpd med fair cond 8.00.
ENDIVE OFFERINGS LIGHT NJ 1-1/9 bucrts 5.00-6.00 OH 1-1/9 buctn 5.00-6.00 BELGIUM 10-lb ctn Wit- loof

type 13.00.

ESCAROLE OFFERINGS LIGHT NJ 1-1/9 bucrts 7.00-8.00 mos 8.00 OH 1-1/9 bucrts 7.00.
GARLIC per lb MEXICO 30-lb ctn White colossal 1.20 super jumbo 1.00 extra jumbo .90 giant .80.
GREENS ABOUT STEADY crt & ctn approximately 1-1/2 bu bchd unless otherwise stated NJ Collards 6.00-7.00 mos 6.50 Mustard, Turnip Tops, & Rape 6.50 Kale 6.50-7.00 PA Collards 7.00 Mustard, Turnip Tops, & Rape 6.50 Kale 5.00 OH Collards 6.50 Kale 6.50-7.00 CA Red Kale 15.00.
LEEEKS STEADY NJ crt bchd 12s 10 00 CA ctn bchd 12s 12.00.
LETTUCE ICEBERG ABOUT STEADY ctn 24s unless otherwise stated CA Wide range in appear 9.00-11.00 mos 9.00-9.50 fair appear 8.00-9.00 film wrpd 24s 11.00-12.00 occ 10.00 30s 9.00-10.00 mos 18.00 NJ 4.00-5.00 sml 3.00-4.00
ROMAINE ABOUT STEADY CA 24s ctn 8.00-10.00 mos 10.00 few 11.00 fair cond 5.00 crt 12.00-13.00 occ 10.00 NJ ctn 24s 6.00 BOSTON CA ctn 24s 7.00-9.00 mos 8.00-8.50 few lwr OH ctn 24s 5.00-6.00 BIBB OH ctn 24s 5.00 LEAF CA ctn 24s 8.00-10.00 mos 9.00-10.00 Red 8.00-10.00 mos 9.00-10.00 OH ctn 24s 6.00 Red 6.00.
MUSHROOMS STEADY PA 4-qt bkt med-lge 4.50-5.50 mos 5.00 sml-med 3.50-4.50 mos 4.00 10-lb ctn med 8.25-9.50 mos 9.00 lge 10.50-11.50 mos 11.00 packages 10-12 oz 8.50- 9.50 mos 9.00 3-lb ctn Shiitake 14.00-15.00 fair qual 9.50-10.00 mos 10.00.
OKRA GA 1/2 bu crt sml-med 8.00-10.00 fair qual 5.00-6.00.
ONIONS-GREEN ABOUT STEADY NJ ctn bchd 48s 7.00-9.00 mos 7.00-8.00 OH ctn bchd 48s 7.00-8.00 MEXICO ctn bchd 48s 5.00-6.00 CA ctn bchd 48s 8.00-10.00 few loas 6.50.
PARSLEY ABOUT STEADY bchd 5 doz Curly unless otherwise stated NJ bubkt 12.00 Plain 14.00 OH crt 12.00 Plain 14.00-15.00 CA ctn 11.50-12.00.
PARSNIPS OFFERINGS INSUFFICIENT TO QUOTE.
PEAS-GREEN LOWER 10-lb ctn per lb CA Sugar type 1.00-1.25 Snap 1.40 GUATEMALA Sugar type 1.20 CA bucrts English type 16.00-20.00.
PEAS-SOUTHERN OFFERINGS INSUFFICIENT TO QUOTE.
PEPPERS 1-1/9 bucrts & ctns Calif Wonder type Green unless otherwise stated NC exlge 10.00-11.00 fair cond 7.00-8.00 lge 9.00-10.00 few 11.00 fair cond 6.00-7.00 med 7.00-9.00 mos 8.00 fair

cond 4.00-5.00 sml 7.00 GA lge 10.00-12.00 med fair cond 3.00-4.00 sml 5.00-6.00 Mixed Red lge 7.00-8.00 few lwr med-lge 6.00-7.00 CA 15-lb ctn exlge 20.00.
RADISHES HIGHER OH ctn Red 30-6 oz film bags 4.00-4.50 mos 4.50 14-1 lb film bags 4.75 bchd 24s 7.00-8.00 MN/MI ctn Red 30-6 oz film bags 4 00 14-1 lb film bags 4.25.
RHUBARB OFFERINGS INSUFFICIENT TO QUOTE.
RUTABAGAS NO OFFERINGS.
SPINACH ABOUT STEADY NJ Savoy type bubkts 9.00 few 10.00 CO Repacked Locally ctn 12-10 oz film bags Savoy type 9.50 CA Flat type ctn bchd 24s 9.50-10.00 mos 10.00 crt 24s 8.00.
SQUASH SLIGHTLY HIGHER 1/2 & 5/9 bucrts & ctns unless otherwise stated NJ Zucchini sml-med 4.00-6.00 mos 4 00-5.00 few 3.00 Yellow Straightneck sml-med 3.00-6.00 mos 4.00-5.00 NC 1-1/9 bucrts Spaghet- u 14 00 Butternut 13.00.
SWEET POTATOES OFFERINGS LIGHT NC 40-lb ctn Jewel type cured US#1 9.00 fair qual 5.00
TOMATOES LOWER 25-lb ctn Pink to Light Red 85% or better US#1 qual unless otherwise stated FL inclds vineripe 5x6s & 6x6s 18.00-20.00 SC 5x6s & 6x6s 18 00-20.00 mos 20.00 fair qual 5x6s 16.00-18.00 Repacked Locally 5x6s 23 00 6x6s 22 00 6x7s 22 00 NJ lge 22 00-25 00 mos 25.00 few high as 27.00 fair qual 15.00 ord qual 10 00 med 18.00-20 00 CA 2-ljr flat 3x4s & 4x4s 14 00-16 00 ord cond 4.00-8.00 BL 7 kilo ctn exlge & lge 19.00-20.00 PLUM TYPE SC 16.00-18.00 mos 16.00 CHERRY TYPE FL 14 00 SC 14.00-15.00 MEXICO 11.00- 14.00
TURNIPS OFFERINGS LIGHT PA 25-lb mesh bag 8.00.
VEGETABLES-OTHER ITALY Radicchio 1-layer flat 12s 15.00.
WATERCRESS FL ctn bchd 24s 9.50-10.00.

Leinbach's Shippensburg Produce Auction

(717)530-1700 or 532-5511
Shippensburg, PA
Average Prices Of #1 Produce
June 20, 22 & 25. Open 11 a.m. Tues., Thurs. & Sat.
Report Supplied by Auction
APPLES: 2.50-4.00 1/4 BU.
APRICOTS: 8.00-12.00 8 QT. FLAT.
BLUEBERRIES: 15.00-18.00 12 PT. FLAT.
GREEN BEANS: 12.00-22.00 1/4 BU.
YELLOW BEANS: 15.00-18 00 1/4 BU.
LIMA BEANS: 15.00-18.00 1/4 BU.
CANTALOPES: .85-1.25 EACH.
HULL PEAS: 12.00-18.00 1/4 BU.
SUGAR SNAPS: 14.00-20.00 10 LB. BOX.
SUGAR PEAS: 16.00-24.00 10 LB. BOX.
BEDDING PLANTS: 2.00-4.00 FLAT.
CABBAGE: 6.00-8.00 50 LBS.
CUCUMBERS: 6.00-8.00 1/4 BU.
PICKLES: 6.00-14.00 1/4 BU.
CHERRIES: SWEET 8.00-18.00 8 QT. FLAT; SOUR 5.00-11.00 8 QT. FLAT.
HANGING BASKETS AND PLANTERS: LARGE 5.00-18.00.
RED BEETS: 6.00-11.00 15 CT. BU.
LETTUCE: 5.00-8.00 24 CT.
STRAWBERRIES: 10.00-14.00 8 QT. FLAT.
PEACHES: 5.00-8.00 8 QTS.
RASPBERRIES: BLACK 14.00-24.00 12 PTS., RED 15.00-20.00 12 PTS.
YELLOW SQUASH: 4.00-6.00 1/4 BU.
TOMATOES: 25.00-35.00 25 LBS MEDIUM TO LARGE #1.
WATERMELONS: 2.00-4.50 EACH, SMALL TO LARGE.
ZUCCHINI: 3.00-8.00 1/4 BU.

BROCCOLI: 1.50-3.00 12-14 CT.
CAULIFLOWER: .50-.79 HEAD.
CABBAGE: GREEN .20-.41 HEAD; 3.50-5.25 CRATE.
CHERRIES SWEET: 8.00-14.00 8 QT. FLAT; SOUR 4.50-8.00 8 QT. FLAT.
CUCUMBERS: 8.50-12.00 1 1/9 BU.
CANTALOPES: LOCAL .75-1.35 EACH.
KOHLRABI: 2.00-2.25 8 CT. BUNCH
SPRING ONIONS: 9.00-15.00 40 CT. BUNCH.
PICKLES: 7.00-11.00 1/4 BU.
POTATOES: NEW 6.00-12.00 1/4 BU.
RED BEETS: 4.00-6.50 15 CT. BUNCH; LOOSE 7.00-9.25 1 1/9 BU.
RASPBERRIES: RED 20.00-27.00 12 PINT FLAT; BLACK 14.00-19.00 12 PINT FLAT.
SWEET CORN: 1.00-3.00 DOZ.
YELLOW SQUASH: 3.00-5.00 1/4 BU.
PATTYPANS: 3.00-10.00 1/4 BU.
TOMATOES: (GREENHOUSE) LOCAL 40.00-52.00 25 LBS. #1.
ZUCCHINI: GREEN 1.50-7.00 1/4 BU; YELLOW 4.50-10.00 1/4 BU.
FLOWER BEDDING PLANTS: 1.50-3.50 FLAT; HANGING BASKETS 2.00-3.50 EACH.
GERANIUMS: 3.50-5.00 15 CT.
VEGETABLE PLANTS: TOMATOES, PEPPERS, EGGPLANT 3.00-6.50 FLAT; CANTALOPES AND WATERMELONS 3.00-6.50 FLAT.
SALE DAYS NEXT WEEK ARE MON., TUES., THURS. AND FRI. 10 A.M. SALE WILL BE HELD JULY 4.

Isennock Auction

New Park, PA
Monday, June 24, 1991
Report supplied by auction
SLAUGHTER COWS: SMALL LOW GRADE RUN 52.00 AND DOWN.
VEAL CALVES: (MOST TO FARM) 110-125 LBS. 130.00-174.00; 100-105 LBS. 157.00-175.00; 90-95 LBS. 115.00-170.00; 70-85 LBS. 76.00-117.00; WEAK AND ROUGH 85.00 AND DOWN.
HEIFERS: 150-185 LBS. 90.00; 100-110 LBS. 100.00-137.00; 80-95 LBS. 87.00-117.00.
FEEDER CATTLE: STEERS 380-505 LBS. 66.00-70.50.
BULLS: 275-695 LBS. 64.00-85.00; 1 HOLSTEIN BULL AT 1570 LBS. 60.75.
HOGS: 55.00-57.00.
FEEDER PIGS: 30.00-42.50 HEAD.

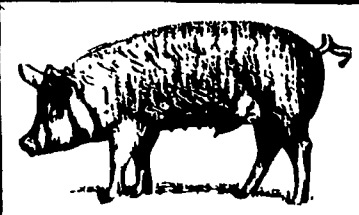
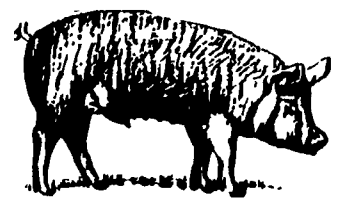
Leola Produce Auction

Leola, PA
June 25, 1991
Report Supplied by Auction
APRICOTS: 10.00-15.00 18 LBS.
APPLES: EARLY HARVEST 6.00-7.50 1/4 BU.
BLUEBERRIES: 13.00-16.00 12 PT. FLAT.
GREEN BEANS: 18.00-26.00 1 1/9 BU.
YELLOW WAX BEANS: 18.00-25.00 1 1/9 BU.

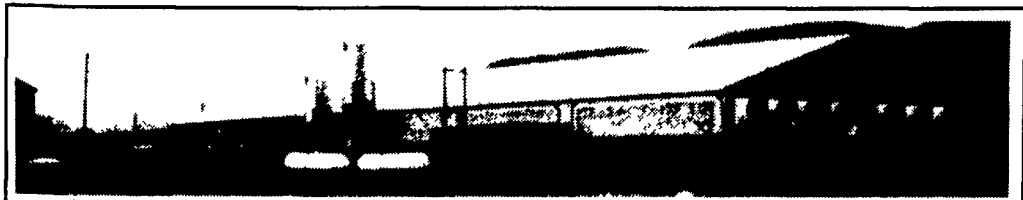
New Jersey Fruit

Bridgeton, N.J.
Wednesday, June 26, 1991
SOUTH NEW JERSEY Sales fob shipping point basis. **BLUEBERRIES** Demand moderate. Market steady. Flat, 12-1/4 pint film-wrapped cups. Bluecrop large 11.00 few including med 10.00.

BEFORE IT GOES TO WORK ON YOUR FARM IT'S PROVEN TO WORK FOR OTHERS!

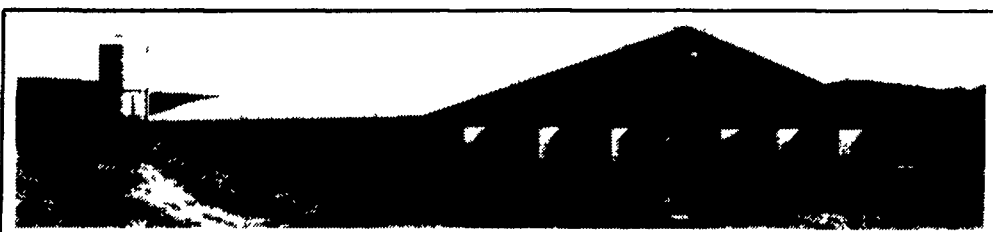


Turnkey Systems & Everything You Need To Succeed!



300 Sow Feeder Pig Unit

2000 Head Swine Finishing Unit



TRI-COUNTY SWINE UNITS FEATURE:

- **Stainless Steel Feeders, Gang Slats & Proctor Hydraulic Crates**
- **aerotech® Engineered Ventilation Systems With Certified System Design**
- **(GSI) Galvanized Feed Bins, Flex-Flow Augers And Automatic Sow feeding**

Swine Operations Offer An Opportunity For Full Or Part-Time Income And Solid Return On Investment. Contracts And Financing Available. CALL FOR DETAILS!



TRI-COUNTY
CONFINEMENT SYSTEMS INC.
 608 E. Evergreen Rd., Lebanon, PA 17042

Ph: 717-274-3488

Hours: Mon.-Fri.
 7:00 to 4:30;
 Sat. 8:00 to 12:00