



Philadelphia Fruit Market

Wednesday, June 26, 1991

GRAPEFRUIT STEADY FL 4/5 buctn Indian River White 32s 10.50 36s 8.50-10.50 40s 10.50 AZ ctn Red 40-48s 10.00 fair qual 32-40s 9.00 CA 23s 11.00-11.50 27s 12.00-12.50 32-40s 15.50 48s 12.50 56s 9.50.

LEMONS STEADY CA ctn 140s 25.00-27.00 165s 26.00-28.00 mos 27.00-28.00 200s 22.00 fair qual 95s 25.00 115s 22.00-25.00 140-165s 25.50-26.00 mos 26.00 200s 19.50 ord qual 115s 18.00-18.50 140s 19.50-22.00 165s 17.50-20.00 200s 12.00- 13.00 235s 9.00-11.50.

LIMES STEADY FL 10-lb ctn Persian Seedless type 36s 2.50-3.50 42s 2.50-3.00 48s 3-3.50 mos 3.00 54-63s 2.50-3.50 mos 3.00.

MISCELLANEOUS CITRUS OFFERINGS INSUFFICIENT TO QUOTE.

ORANGES STEADY FL 4/5 buctn Valencia 80-100s 17.00 125s 16.00 CA ctn Valencia 80s 28.00 MOROCCO 15-kilo ctn Valencia 60s 22.00 75s 20.00 80s 15.00 88s 16.00-16.50 100s 12.50-14.00 113s 12.50-14.00 mos 14.00.

TANGELOS NO OFFERINGS.
TANGERINES NO OFFERINGS
TEMPLES NO OFFERINGS.

APPLES STEADY CONTROLLED ATMOSPHERE STORAGE ctn tray pack WA Red Delicious WAExFcy 100s 20.00 preferred labels 80s 26.00 88s 25.00-26.00 100s 22.00-23.00 113s 20.00-22.00 USExFcy 72s 21.00 88s 21.00 100s

18.50-20.00 Golden Delicious WAExFcy 80s 23.00 88s 23.00-25.00 100s 20.00-22.00 113s 18.50 USExFcy 88s 22.00 ctn cell pack NO SALES REPORTED NEW CROP ctn tray pack NEW ZEALAND Granny Smith 88s 25.00 100s 24.00 Fuji 88s 50.00 Braeburn 88s 38.00 100s 35.00.

APPLE-PEARS OFFERINGS INSUFFICIENT TO QUOTE.

APRICOTS STEADY CA 24-lb ctn Patterson 7 sz 25.00 8 sz 22.00-25.00 10 sz 21.00-23.00 12 sz 18.00-21.00 Royal 6-1/2 sz 28.00 7 sz 26.00 7-1/2 sz 24.00.

AVOCADOS STEADY CA 1-lyr Hass 20s 14.50 2-lyr ctn Hass 48s 28.00-30.00 BANANAS Imports ctn approx 40-lb 16.50-16.75 fair qual 14.00-15.00 mos 14.50 film wrpd 16.50 Institutional pack Petite 150s 12.00.

BLACKBERRIES LOWER CA flats 12-6 oz film wrpd cups 16.00 GUATEMALA flats 12-6 oz film wrpd cups 21.00.

BLUEBERRIES LOWER flats 12-1 pt film wrpd cups NJ lge 10.00-13.00 med

9.00-10.00 few hgr sml 6.00-7.00 NC med 10.00.

CHERRIES LOWER CA 18-lb lug Bing 12 row & lgr 22.00 13 rowsz 15.00 WA 20-lb ctn WA#1 Bing 12 row & lgr 28.00 fair cond 18.00-20.00 11 row sz fair cond 26.00-28.00 few 29.00.

COCONUTS DOMINICAN REPUBLIC IC sacks 40s few 14.00.

CRANBERRIES NO OFFERINGS.

GRAPES-TABLE FLAME SEEDLESS LOWER, OTHERS ABOUT STEADY CA 22-lb lug Thompson 23.00 Perlette 18.00-20.00 some 17.00 fair cond 10.00-12.00 Flame Seedless 16.00-16.50 some 15.00 Superior Seedless 22.00 AZ 22-lb lug Perlette 20.00-23.00 MEXICO 22-lb lug Thompson Seedless 23.00-26.00 sml 18.00 Perlette 18.00-20.00 some 16.00 Flame Seedless 15.00-17.00 few 18.00 Superior Seedless 18.00 CHILE 18-lb ctn Ribier fair cond 6.00-10.00.

KIWIFRUIT STEADY NEW ZEALAND 1-lyr flat 36-39s 7.50-8.00 mos 8.00 42s 8.00 CHILE 1-lyr flat 27-30s fair cond 5.00-6.00 3-lyr flat 108s 10.00-12.00.

MANGOS ABOUT STEADY MEXICO flat ctn Tommy Atkins 9-14s 6.00-7.00.

NECTARINES ABOUT STEADY CA 25-lb ctn May Grand 56 sz 20.00 64 sz 18.50-19.00 72 sz 15.00-17.50 some 13.50 80-84 sz 11.00-13.00 88 sz 10.00-12.00 some 9.00 May Diamond 56 sz 20.00 Spring Diamond 56 sz 21.00 2-lyr ctn Apache fair cond 64-72s 8.00- 10.00 88s 5.00-6.00 May Grand 56s 16.00-17.00 SC 25-lb ctn no variety or grade marked 2-1/2" & up 14.00 2-1/4" & up 12.00 2" & up 10.00.

PAPAYAS DOMINICAN REPUBLIC ctn 7-8s 15.00.

PEACHES ABOUT STEADY 3/4 buctn USE#1 unless otherwise stated SC Harvester 2-1/2" & up 12.00- 13.00 mos 13.00 Coronet 2-1/4" & up" 8.00-9.00 CA 2-lyr ctn June Lady 40-42s 19.00 48-50s 17.00-18.00 Gem free 42s 17.00 Springcrest 56s 11.00-12.00 25-lb ctn Maycrest 72 sz ord cond 5.00-6.00 occ 4.00.

PEARS STEADY WA Controlled Atmosphere Storage 4/5 buctn D'Anjou wrpd WAExFcy 90-100s 40.00 US#1 100s 25.00 150s 24.00 AUSTRALIA ctn approx 40-lb ctn Bosc 13s 26.00 150s 24.00-25.00.

PERSIMMONS OFFERINGS INSUFFICIENT TO QUOTE.

PINEAPPLES HAWAII ctn via air 6s 12.00 COSTA RICA 2-lyr ctn 14s 12.00.

PLUMS STEADY CA 28-lb ctn Red Beaut 4x4 sz 23.00 3x4x5 sz 18.50 Black Beaut 2x3x4 sz 34.00 3x4 sz 30.00-33.00 3x4x4 sz 28.00-31.00 4x4 sz 26.50 3x4x5 sz 22.50- 23.50 4x5 sz 20.00 3x3 sz 38.00 Santa Rosa 4x4 sz 26.50 3x4x5 sz 23.50 4x5 sz 21.50.

POMEGRANATES NO OFFERINGS.

RASPBERRIES LOWER CA flats 12-6 oz film wrpd cups Red 12.00-16.00 mos 15.00 one label 18.00.

STRAWBERRIES ABOUT STEADY CA flats 12-1 pt bkt med-lge 8.00-10.00 mos 8.00-9.00 fair cond 5.00-7.00.

CANTALOUPS SLIGHTLY LOWER CA 1/2 ctn 12s 12.00 15s 10.00-13.00 mos 11.00 fair cond low as 8.00 18s 9.00-12.00 few 13.00 fair cond 8.00 ord cond 3.00-5.00 23s 7.00-9.00 few 11.00 some incl fair cond low as 6.00 ord cond 3.00 TX 1/2 ctn ord cond 12-15s 3.00-4.00 AZ 1/2 ctn few 12-18s 13.00 23s 10.00 MEXICO 1/2 crt 12- 18s fair cond 8.00-10.00.

HONEYDEWS OFFERINGS LIGHT

2/3 ctn TX 5-6s 15.00-18.00 CA 6s 15.00. MISC MELONS CA 2/3 ctn Orange Flesh 8s 12.00.

WATERMELONS LOWER avg weight per melon GA & SC Jubilee 32-lb 4.50 Sangria 23-1/2 lb 3.50 Long Gray 29-1/2 lb 3.50 Crimson Sweet 29-lb 2.50-2.75 25-lb 3.00 23-lb 2.50 20-lb 2-2.25 19-lb 2.00 Royal Sweet 30-lb 2.50-2.75 28-1/2 lb few 3.50 Mirage 30-lb 3.00 AL Jubilee 23-lb fair appear 1.50-1.75 TX All Sweet 30-lb 4.50-5.00 FL Jubilee 25-lb fair cond 1.50 Crimson Sweet 17-lb fair cond .65 Royal Sweet 24-lb fair cond 1-1.50.

Philadelphia Potato & Onion

Wednesday, June 26, 1991

ONIONS-DRY YELLOW HIGHER, OTHERS STEADY 50-lb sacks US#1 or generally good quality and condition Yellow unless otherwise stated CA grano type jumbo 900-10.00 mos 10.00 Repacker size 11.00-12.00 fair qual 6.00-8.00 40-lb ctn Red jumbo 13.00-14.00 25-lb sks Red med/med-lge 900 NM grano type jumbo few 900 White jumbo 16.00-17.00 TX grano type colossal 11.00-12.00.

POTATOES ROUND WHITES LOWER, OTHERS ABOUT STEADY 50-lb sacks US#1 size A washed or brushed unless otherwise stated ROUND WHITES NC New Crop 9.00- 11.00 few 11.50 VA 9-950 few 10.00 lge few 14.00-15.00 size B 7.00 ROUND REDS new crop NC incl ctns 10.50-12.00 mos 11.00 sz B 12.00-13.00 AZ 10.50-11.00 sz B 13.00 fair qual 10.50-11.00 RUSSETS 50-lb carton count ID 70-80s 17.00 few 18.00 90s 15.00-16.00 100s 14.00-15.00 few 13.50 WI Norko- tah 70-80s 15.00 90s 13.50 100s 12.50

Concrete Slatted Hog Barns

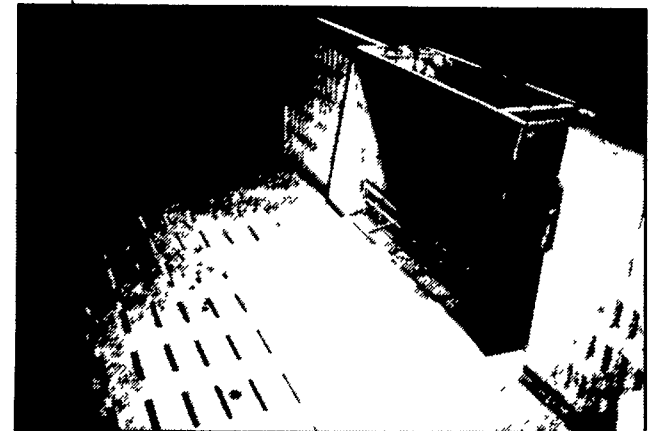


Concrete slats for Grower, Finisher and Gestation.

Available in slot sizes: 3/4", 7/8", 1" or 1 1/4" by 4" or 9" long

Concrete Penning Available in Sizes:

- 2' or 4' long by 30" high by 1 1/2" for weaner pigs.
- 2' or 4' long by 36" high by 1 1/2" for fat hogs.
- 2' or 4' long by 42" high by 1 1/2" for gestation pens.



New Style Concrete "Waffle Slats"

"Waffle Slats" can be undercut so it can replace existing steel slatted areas.

Special sizes can be made in increments of 1" on request.



Other Products:

- H&J Bunks
- Cattle Slats
- Concrete Posts & Beams

Give us a call on hog, beef, dairy and heifer barns

FEED INGREDIENTS

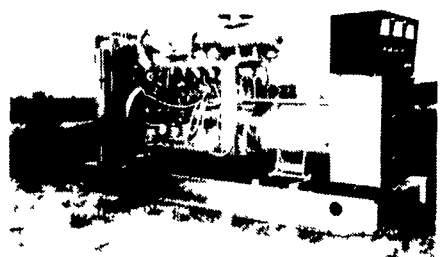
We Want To Help You Reduce Your Feed Costs

- WE SUPPLY
- 48% SOYBEAN MEAL
- ROASTED SOYBEANS
- DRIED CORN DISTILLERS
- MIXES

Call Us Today...

HERSHEY AG

(717) 653-8783 R.D. #1, Box 139
1-800-544-4574 Marietta, PA 17547



GENERATORS

- Sales ★ Service ★ Rentals
- ★ Complete Generator Systems
- ★ PTO ★ Portables ★ 2-1600 KW

"We Service It If You Have It And Sell It If You Need It"

34 W. Mohler Church Rd. Ephrata, PA 17522

Tel: 717-738-0300
Fax: 717-738-4329



477 East Farmersville Road
New Holland, PA 17557
(717) 355-2361

