

**MAILBOX MARKET
FOR SALE**

Goat kids pygora dehorned had shots, good pets. Does \$75. Wethers \$50, excel. fleece. Chester Co. 215-469-9234.

JD 40W for parts or restore \$475. JDH cultivator \$25. Blair Co. 814-793-4384.

NH 270 baler with thrower \$1000. Snyder Co. 717-539-8181.

Purebred holstein bull from dams with records to 30,000M and 1100F VG or Ex. classification, priced to sell. Franklin Co. 717-597-3770 or 328-5487.

Massey Ferguson super 92 combine for parts, make offer, 3 point 2 row cultivator \$150. Leb. Co. 717-272-9531.

8N two speed 10 hrs. sleeve rings, bearings, new tires, new paint, blade plow, cultivator, ex. cond. \$2950. Snyder Co. 717-837-3745

Bale body 8 ton 14', good cond \$500. Neg. 6600 JD Combine 3 heads, available, exc. \$21,500. Complete. Leb. Co. 717-469-2138.

Mitey Cat miniature bulldozer restored. Wanted: Cletrac Model F or parts and literature. Al Provenzano, 200 River Rd., Stratford, CT 06497 203-375-7491.

Int. 403 combine 3 RN cornhead 13' grain head, hume reel needs motor work 10-8"x20" l-beams. Bed. Co. 814-356-3358.

JD 12A combine with Luc engine, tedder, side rake, 32 ft. corn, bale elevator, burlap bags. NI #7 corn picker. Montg. Co. 215-287-9670.

Lanc. Co. 1 1/2 acre farmette, 2 story 4 bedrooms 1 1/2 baths, nice roomy kitchen, large 2 car garage, work-

shop, coal Laush boiler \$120,000. 717-367-3166.

3 year old Belgian mare, dark sorrel, green broke. Daniel E. Beiler, 78 South Maple Ave., Leola, Pa. 17540. Lanc. Co.

Dbl. reg. T.W.H. golden palomino 5 yr. mare 152 hands, exp. rider, used on trails \$1500. Southern Schuylkill Co 717-754-3486.

Indisposables cotton diapers, ex quality, super absorbant, snug fitting, best cotton diaper on the market! Hunterdon Co NJ 908-996-6959.

Like new John Deere RX75 riding mower, used one season \$1000. Berks Co. 215-682-2883 also two 10x18 Zimmerman box stalls, new!

Cute AKC miniature schnauzer puppies, good breeding, home raised. 717-394-4219 Lanc Co.

Steiner law sweeper, new \$1700. Sussex NJ 201-875-1597

Harvestore silo, white roof 20x60 in good cond with or without unloader. Chester Co 215-269-3442

Left over, new building materials, plumbing, horse supplies, nails, spikes, braces, etc. Chester Co 215-932-9257

Storm front carriage in good condition, 7 yrs Good brakes \$2400 OBO Gideon Miller, Box 107E, Mill Hall, Pa 17751 Clinton Co

Two self-propelled Case combines 660 and 960 good cond. with grain heads, Mifflin Co 717-899-6777 or 717-899-6664.

Bridgeport milling head model "M" complete with 6 collets and boring head \$375. Bucks Co. 215-679-2749

Romney ewes \$150, ewe and ram lambs \$150 All healthy and registered. Frederick Co Md. 301-834-6427.

Six 19" big truck tires & wheels, 9x7 and 16x7 overhead doors, drawbar for C or 200 tractor truck, Berks Co 215-488-1541

#7 Mc Silage cutter, shredder bars, new web & shear plate, 2 sets knives \$350 Jesse L Esh, 2435 Conesgota Crk Rd, Narvon, PA 17555

1 aluminum storm door with screen \$10. Northampton Co. 215-867-7165

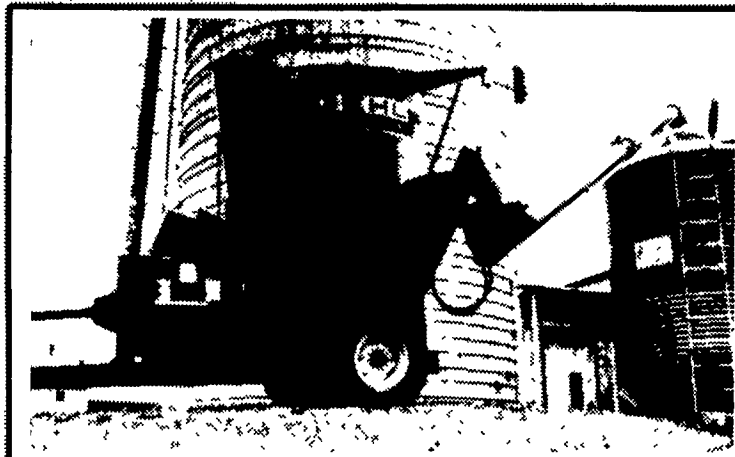
Turkey or poultry waterers and feeders, wood feed bins; large hot water boiler with circulators; used 8" cement blocks Lanc Co 717-687-8237.

2x12x10 #1 pressure treated 147 pcs. 7.95 ea OBO. 717-656-2745 no Sun. calls please.

Manure spreader, New Idea ground driven, ex. shape, barn kept \$575 Firm. Northampton Co. 215-691-3505 after 6 p m

AKC Pomeranian pups, ready 6-25-91 also complete PTO for New Holland baler \$325. Benueel King, High Point Rd, Cochranville, Pa. 19330

GEHL



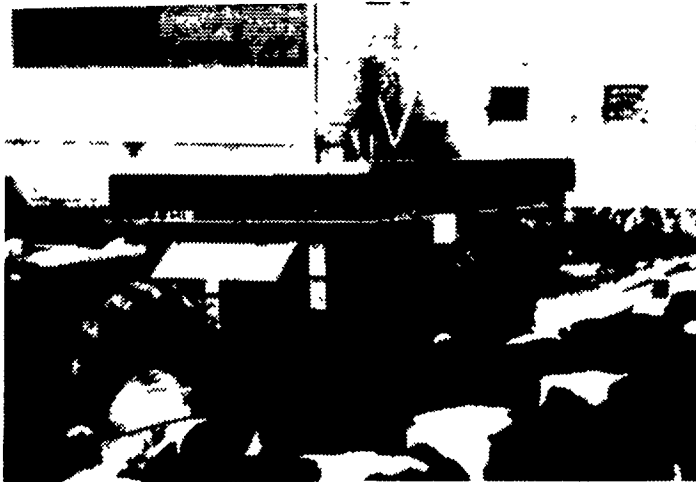
Gehl Mix-All®: the "can do" machine!

On-farm feedmaking has never been better. Or more worry-free. In fact, Gehl Mix-All® portable grinder-mixers are truly "can do" machines. Because they fit into any feedmaking operation; uniformly grind and mix ingredients for a higher quality feed; and save work and time with efficient hydraulics. Choice of 100 or 135 bu. capacity models.

Come in today and see what a Mix-All® "can do" for you!

Fast, efficient feeding!

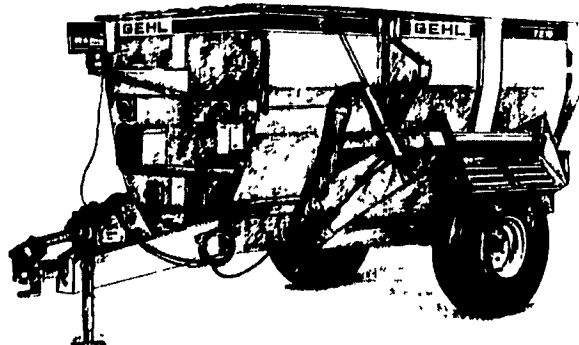
Gehl's thrifty feeder wagon features rugged construction and operating simplicity. This economical unit fills the needs of farmers and ranchers who don't require the complete mixing action provided by our mixer feeders. The simple two-auger system smoothly transfers feed to the wide unloading conveyor for high-capacity discharge into feed bunks. The Model 7190 is rated at 190 cubic foot struck capacity.



Gehl TMR Mixer Feeders Are #1

Nothing can maximize the return on investment in your dairy or beef feeding operation like a Total Mixed Ration (TMR) feeding system. And nothing makes TMR work better than a Gehl mixer feeder. Here's why:

- **Better Mixing Action** - Unique four-auger design creates a double figure-8 mixing pattern for fast and complete mixing of all feed ingredients.
- **Energy Efficient** - Planetary drive system requires less horsepower.
- **Built To Last** - Patented star couplers absorb shock loads by allowing the bottom augers to flex, providing long service life.
- **Six Sizes** - From 150 to 500 cubic feet mixing capacities.
- **Three Styles** - Trailer type, stationary and truck-mounted units to fit your operation.



CASH REBATES — OR —



INTRODUCING The Best Financing Deal In Farm Machinery Today. FREEDOM FROM PAYMENTS, Or FREEDOM FROM FINANCE CHARGES.

No payments or finance charges until Dec. 1, 1991. Plus get 7.9% LOW APR for up to 30 months after that!

OR Choose no finance charges for 12 months with extra-low payments. Then 9.9% LOW APR for up to 36 months!

GEHL FINANCE
A DIVISION OF
GEHL
PHONE 414-334-9461

* Certain restrictions may apply. See your participating Gehl dealer for complete details. Gehl Company reserves the right to interpret, modify or cancel these programs at any time without prior notice.

Available From Your Local Participating Dealer

PEOPLE'S SALES & SERVICE
Rt 35
Oakland Mills, PA

HINES EQUIPMENT
PO Box 5, Rt 22
Cresson, PA
RR 03, Box 550, Altoona
(Bellwood)

STOFFER BROS. INC.
1066 Lincoln Way West
Chambersburg, PA

ECKROTH BROS. FARM EQUIPMENT
RR 02, Box 24A
New Ringgold, PA

A.L. HERR & BRO.
312 Park Ave
Quarryville, PA
BINKLEY & HURST BROS.
133 Rothsville Station Rd
Lititz, PA

ICKES FARM SUPPLY
Rt. 1 Hwy 869 West
Osterburg, PA

MILLER EQUIPMENT CO.
RR 01 Stauffer Rd.
Bechtelsville, PA

D.W. OGG EQUIPMENT CO.
Main Location
5149 Cap Stine Rd.
Frederick, MD
Taylorsville, Md
(Bob's Welding)

MILLER-LAKE
RR 02, Box 273A
Belleville, PA
LINCOLN SUPPLY & EQUIPMENT CO.
RR 02, Box 217A
Somerset, PA
Rt. 135
McCooles, MD
UMBERGER'S OF FONTANA
RR 04 (Fontana)
Lebanon, PA

GUTSHALL'S INC.
Rt 850 West
Loysville, PA
1201 Spring Rd
Carlisle, PA
LEBANON VALLEY IMPLEMENT CO., INC.
700 E Linden St
Richland, PA
FANCY FURROW FARMS AG EQUIP., INC.
RR 01, Uhler Rd
Easton, PA



A LESSON WELL LEARNED... LANCASTER FARMING'S CLASSIFIED ADS GET RESULTS!