

Oren C Bender H 93 60.4  
Dean Georg H 44 60.3

Artie-Jay Farm H 81 61.8  
S&S Dairy Farms H 103 61.7  
David & E.B. Weitzer H 54 61.6  
Edwin R. Johnson Jr. H 115 60.5

# Maryland DHIA

(Continued from Page B23)

Herd Name	Herd Brd.	Cows In Herd T	Milk Avg FCM T
Paul K. Coblentz & Sons	H	183	66.3
Allen Brothers	H	107	
Gary L & Mary C Snyder	H	53	65.8
Howard A & Ruth Pearl	H	31	65.6
Ripleyvale Farm	H	125	65.1
James E. Roderuck	H	62	64.9
Eric F-Faith M Burall	H	84	64.5
Holterholm Farms	H	93	
Paul & Karen Dotterer	H	90	64.4
Hottels Dist Springs Farm	H	124	63.8
Spring-Vale Holsteins	H	75	
Keller, Donald Dean	H	64	63.7
David Toms	H	174	63.5
David & Patrick Allen	H	66	63.3
Leigh Castle Holsteins	H	124	63.1
Wayne Burdette	H	136	
Teabow Inc	H	267	62.9
Dyke & Mary Garver	H	88	62.7
Willard W. Horton Jr.	H	80	62.6
Gaywinds Farm	H	89	62.1
Gary and Margaret Eury	H	50	61.8
J&M Garst Inc.	H	68	61.6
Enfield Farm	H	100	61.4
Harry Murphy & Son	H	61	
Wayne & Georgie Barnes	H	77	
Daniel Nowell	H	83	61.1
R-B Farms	H	171	61.0
Lamar O Hara & Son	H	73	60.9
Darrell & Virginia Wolf	H	57	60.5

## GARRETT COUNTY

Herd Name	Herd Brd.	Cows In Herd T	Milk Avg FCM T
Philip Beachy	H	49	83.9
Arlin Maust	H	33	78.2
Paul & Henry Kinsinger	H	70	77.0
Tobie Kinsinger	H	31	76.1
Ernest & Dan Ganoe	H	135	74.2
Ray E Miller	H	38	71.7
Ez-Mar Haven	H	102	70.4
Fred Petersheim	H	39	69.1
Delvin Mast	H	127	69.0
Wayne E. Schrock	H	44	68.6
Cleland Beitzel	H	59	68.5
Guards Farm Inc.	H	64	68.4
H Michael Steyer	H	45	68.3
Glenn E. Johnson	H	36	
Galen Kamp	H	55	67.7
Bender, Carl	H	108	66.8
John D. Doerr	H	113	
Calvin Schrock	H	40	66.4
Ezra Schrock	H	32	64.8
Kenneth L. Yoder	H	54	64.0
Ralph Lichty	H	37	63.3
Covewind-Hill Holstein	H	32	62.1
Gap Run Farm Inc	H	60	61.7
Menno J Yoder	H	38	61.1
Daniel Lee Yoder	H	36	60.7
Paul D. Miller	H	33	60.6

## HARFORD COUNTY

Herd Name	Herd Brd.	Cows In Herd T	Milk Avg FCM T
My-Ladys-Manor Farm	H	218	68.4
Stephen C. Trout	H	44	67.7
David M. Keyes	H	90	66.4
W C Galbreath & Sons	H	117	65.9
Maroamo Farm	H	91	63.4
Brick House Farm	H	164	62.4
Level Farm	H	71	62.2
Charles T. Edwards	H	86	61.8
Strawberry Hill Farm	H	105	
Harkins Hill Farm	H	129	60.9

## HOWARD COUNTY

Herd Name	Herd Brd.	Cows In Herd T	Milk Avg FCM T
David & James Patrick	H	138	71.4
University Of Maryland	H	111	70.8
L-Meadow Farm	H	59	66.8
Bowling Green Farm	H	130	61.4
Patrick, David & James	A	61	60.8
Edgewood Farms Inc.	H	38	

## KENT COUNTY

Herd Name	Herd Brd.	Cows In Herd T	Milk Avg FCM T
Gen Farm I	H	737	71.8
Fair Hill Farm Inc.	H	224	70.2
Roy W Crow	H	65	69.7
Chandale Farm	H	73	66.5
John Z. Stoltzfus	H	72	65.2
Howard McHenry	H	196	65.1
Dix Lee	H	23	65.0
Michael H Philipp	H	59	62.9
R&E Brink	H	66	61.8
P. Thomas Mason	H	55	61.6
Lisa Reinhold	X	13	61.4
Hills Dairy Partnership	H	131	60.9

## MONTGOMERY COUNTY

Herd Name	Herd Brd.	Cows In Herd T	Milk Avg FCM T
Walker, Stewart & Sons	H	137	63.7
Rudell C Beall & Sons	H	174	62.6

## POTOMAC VALLEY ASSOC.

Herd Name	Herd Brd.	Cows In Herd T	Milk Avg FCM T
Brookedale Holsteins	H	78	69.1
Ron-Ell Dairy Farm	H	58	66.9
Edward C. Ott	H	65	61.7
Calvin P. Dayton	H	60	61.2
Cessna Bros.	H	43	60.1
Leaning Pine Farm Inc.	H	60	60.0

## QUEEN ANNE'S COUNTY

Herd Name	Herd Brd.	Cows In Herd T	Milk Avg FCM T
Thomas & Shirley Jackson	H	51	74.7
McFarland, Wm & Wayne	H	105	71.7
L J & W E Palmatary	H	170	70.8
Charles R Patterson	H	115	67.5
Harry L Schrader&Sons	H	150	66.2
Donald W. Skinner	H	76	66.1
Pintail Point Farm	H	96	65.2
F&J Moore	H	122	63.1

## TALBOT COUNTY

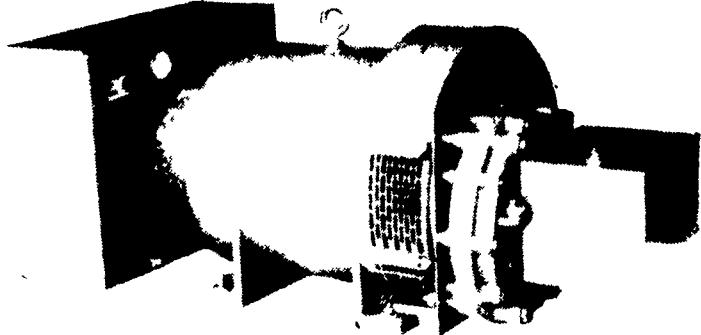
Herd Name	Herd Brd.	Cows In Herd T	Milk Avg FCM T
Wm Brinsfield	H	48	65.4

## WASHINGTON COUNTY

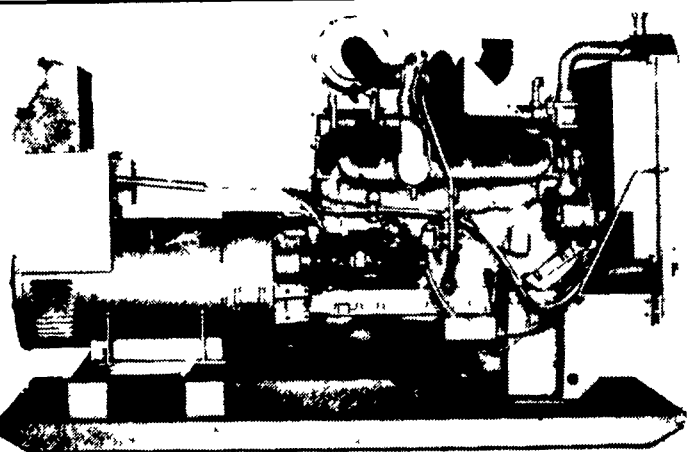
Herd Name	Herd Brd.	Cows In Herd T	Milk Avg FCM T
Afton Spring Dairy	H	69	74.4
Gilson R. Martin	H	44	73.8
Lynn Strite	H	52	73.5
Dwayne & Miriam Bell	H	36	
Isaac Martin	H	51	69.3
Roy J. Byers	H	29	68.1
Kenlin Martin	H	54	67.7
Earl Grove Jr	H	115	66.8
Arjubell Farm	H	131	
Arthur Rhoderick	H	199	65.3

(Turn to Page B27)

## STANDBY GENERATORS



PTO Driven

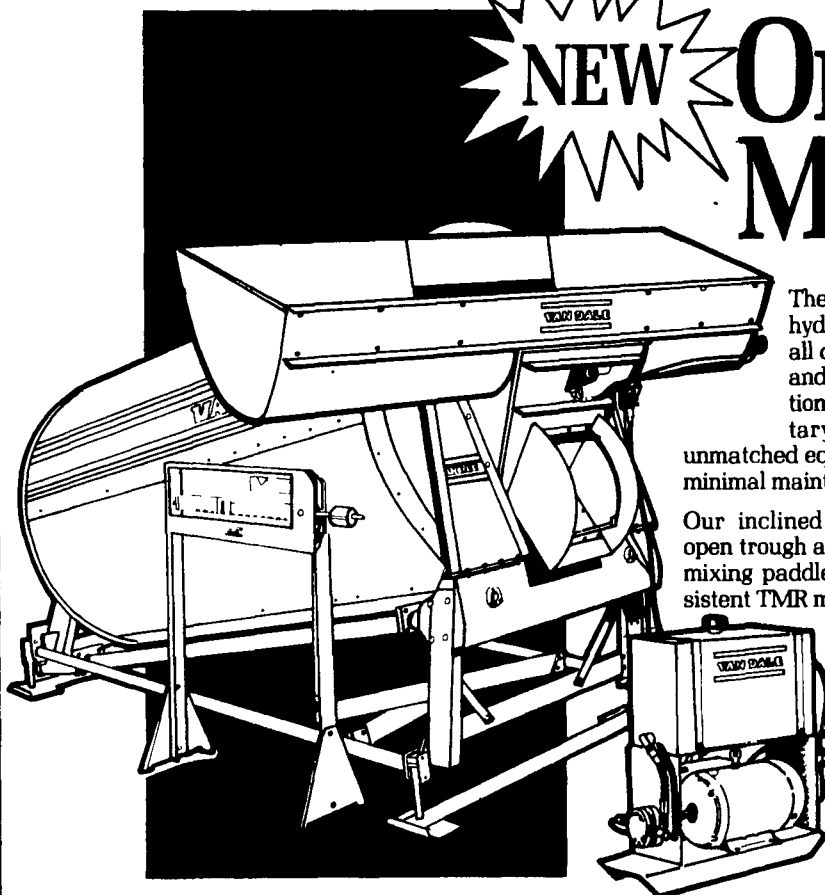


Automatic Systems

## MAXI-POWER INC.

330 Fonderwhite Rd. Lebanon, PA 17042  
24 Hr. Service (717) 273-4544 Radio Dispatch

# WE ARE DRIVEN... BY HYDRAULICS!



## NEW Orbit II Mixer

The new Van Dale Orbit II hydraulic mixer eliminates all chains, sprockets, belts, and pulleys. The combination orbit motor and planetary gear drive give you unmatched equipment reliability and minimal maintenance.

Our inclined rotating drum, large open trough auger and six full length mixing paddles give you a fast consistent TMR mix time after time. And the optional eight foot power hopper permits loading with a front end loader. If you're thinking TMR feeding, think Van Dale Orbit II Mixer. It gets the job done right.

## VAN DALE

Dependability through Quality

FRANKLIN'S FARM SERVICE  
Laceyville, PA 717-869-2407

HISTAND'S FARM & HOME SERVICE  
Rome, PA 717-744-2371

K & S INC.  
Quarryville, PA 717-284-3111

LANCASTER SILO CO. INC.  
Lancaster, PA 717-299-3721

PAUL JACKSON'S LIVESTOCK SYSTEMS  
Troy, PA 717-297-3872

RYDER SUPPLY CO.  
Chambersburg, PA 717-263-9199

For Additional Information And Literature Write Directly To:

**VAN DALE**  
P.O. Box 337 Long Lake, MN 55356  
612-473-7395  
★ DEALER INQUIRIES INVITED ★

MCMILLEN BROTHERS Loysville, PA 717-789-3961  
STAR SILOS Myerstown, PA 717-866-5708