

Maryland DHIA Issues Report

The May 1991 DHI information for Maryland dairy herds is listed by herd name, county, total number of cows in the herd, and the average production per cow on a 3.5% Fat Corrected Milk (FCM) basis for all milking cows in the herd. The herd must consist of at least 10 cows averaging 60 lbs. or more of 3.5% FCM per cow per day. All of the herds are on official DHI or DHIR test.

Also listed are the top 10 herds in Maryland for the Brown Swiss, Guernseys and Jerseys, and the top seven herds for Ayrshires.

David N Wells	H	263	63.2
Richard Edwards	H	156	62.4
John Fuchs & Sons	H	90	61.8
Hollingsworth Daniel 3	H	59	61.6

William Hesson	H	49	63.8
Panora Acres Inc.	H	145	63.3
D. Owings & B. Horner	H	51	63.1
Queen Acres Farm	H	16	62.3
Harry W. Roach III	H	85	62.0
Thomas H. Muller	H	61	61.8
R.A. S.L. Doody	H	61	60.0

CARROLL COUNTY

Herd Name	Herd Brd.	Cows In Herd T	Milk Avg FCM T
D Richard Flickinger	H	80	72.6
Maple Lawn Farm Inc	H	180	71.9
Derrwyn Holsteins	H	71	71.0
Mayer's Stoney Point	H	45	70.8
Marlin Hoff	H	260	67.6
Del-Myr Farm	H	67	67.4
James & John Myers	H	62	67.0
Arbaughs Flowing Springs	H	106	66.9
Leaseway Holsteins	H	110	66.4
Joe A Schwartzbeck	H	149	66.2
Mike & Anita Haines	H	59	65.2
Md.-Carrollton	H	48	
Carl Weant	H	77	64.8
Dale M & Susan Smith	H	103	64.7
Garstlyn Holsteins Inc.	H	71	
Unicorn Associates Inc	H	129	64.4
Windsor Manor	H	60	64.3

CECIL COUNTY

Herd Name	Herd Brd.	Cows In Herd T	Milk Avg FCM T
Tom and Joy Crothers	H	46	79.4
Tom and Joy Crothers	H	10	76.6
Goods Dairy Farm	H	33	68.6
Locust Haven Farm	H	36	68.5
Pioneer Valley Farm	H	120	67.1
Zion Meadows	H	110	64.5
Driftwood Farms	H	84	64.3
Peter & Richard Morris	H	57	
Pleasant View Farms	H	76	63.4
Kilby Inc.	H	235	63.3
Robert A. Sigler Jr.	H	67	62.8
Pembroke Farm	H	74	61.3
Long Green Farms Inc.	H	108	60.4

FREDERICK COUNTY

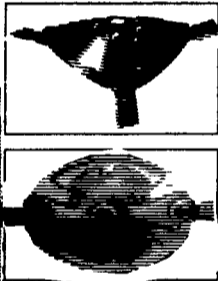
Herd Name	Herd Brd.	Cows In Herd T	Milk Avg FCM T
Gary & Judith Remsberg	H	83	72.4
Dave & Carole Doody	H	115	72.2
Ronald & Ruth Cline & Fam	H	125	71.9
Wilcom, Donald L.	H	120	71.3
Glad-Ray Brown Swiss Farm	B	20	70.9
Da-Bren Farm	H	132	69.7
Hobble-Hill Holsteins	H	76	
Savage-Leigh Farm	H	154	69.5
Glad-Ray Farm	H	50	69.0
O Clayton Smith	H	124	68.9
Renn Remsberg & Son	H	79	
G. Donald Shafer & Son	H	144	68.5
Donald L. Wachter	H	102	67.6
Good Intent Farms Inc	H	200	66.8
Hollow Valley Farm	H	130	66.7
Clovertop Farm, Inc.	H	95	
Daughters Turn Dairy	H	38	66.4

(Turn to Page B26)

GET THE EXTRA EDGE

Put a Vicon **three-bladed** disc mower through wet, tangled crops - even fire ant hills - and then compare the difference.

With almost double the number of cuts per minute over two-bladed disc competitors, and the extra suction created by Vicon's unique triangular discs, it's easy to see why Vicon CM disc mowers are the choice for fast, clean **NO-PLUG** performance.



Rugged, low profile cutterbars in 5'6", 6'9" and 7'10" widths, reversible blades and heavy duty discs, deliver reliability and capacity when time is tight.

Vicon's got the edge. The extra edge.

See for yourself. Call in at your local Vicon dealer, today.



Bringing technology down to earth.

Pennsylvania Dealers

ERB & HENRY EQUIP., INC.
New Berlinville, PA
One Mile North of Boyertown
215-367-2169

M.M. WEAVER & SONS
169 N. Groffdale Rd.
Leola, Pa.
717-656-2321

MELVIN J. SHEFFER, INC.
121 Railroad St.
Hanover, Pa.
717-637-3808

STOFFER BROS.
1066 Lincoln Way West
Chambersburg, Pa.
717-263-8424

TRIPLE H EQUIPMENT
RD 1 Box 141
Peach Bottom, Pa.
717-548-3775

Maryland Dealers

ELLIOTT EQUIP. & HARDWARE
Rt. 328 & Elliott Rd.
Easton, MD
301-822-8866

E.T. CLINE & SONS
510 E. Wilson Blvd.
Hagerstown, MD
301-739-2223

New Jersey Dealers

BEEEMERVILLE EQUIP.
Rd 3, Box 610
Sussex, NJ
201-875-5672

REED BROS.
Petticoat Bridge Rd.
Columbus, NJ
609-267-3363

SCHAPER BROS.
RD 8, Box 270
Bridgeton, NJ
609-455-1640



SAVE UP TO \$200 ON THE BEST TILLER ON EARTH
Offer Ends June 30

Check With Us Before You Buy

- SAVE \$150 On Model 715, 6 H.P.
- SAVE \$200 On Model 725, 8 HP With 20" Or 26" Tillers
- ★ Both Models Include **FREE FURROWER**

- All Gear Drive • Adjustable Tiller Width
- 6 & 8 HP Industrial Eng • Recoil or Electric Start • Quick Change Handle Positions
- Quick Change Attachments • Quality Since 1942

Shredder

Snow Blower

Cutter Bar Mower

JUST PULL THE PIN TO CHANGE ATTACHMENTS WITH QUICK HITCH

14 Years of Professional Sales & Service
717-738-4215

WES STAUFFER ENGINES & EQUIPMENT

Mon.-Fri. 8-7
Wed. 8-5; Sat. 8-2
23 Pleasant Valley Rd
East of Ephrata off Rt. 322

29H5621 PETICOTE BODA
HA/1-91

ABS
AMERICAN BREEDERS SERVICE

- +1.30 Udder Comp.
- +1.09 Feet & Leg Comp.
- +1.60 Steep Foot Angle

The Kind That Last!

Weighing Pays!

Get the best price for your market hogs. You can weigh live-stock quickly, easily and quietly without undo stress. The WayPig 300 is a management tool no hog farm should be without. Call us today.

We Ship UPS Check Our Ware House Prices

Swine & Poultry Systems Specialists

FARMER BOY AG. INC.

410 E. Lincoln Ave., Myerstown, PA 17067
PH. (717) 866-7565 24 Hour Service
Hours: Mon.-Fri. 7-5 Sat. 7:30-11:30 6-22