

**Central U.S. Carlot**

**Beef Report**  
June 19, 1991

Report supplied by USDA  
(INCLUDES THE MAJOR PRODUCTION AREAS IN THE MIDWEST AND TEXAS) AS OF 3.00 P.M.

COMPARED TO TUESDAY'S 3:00 P.M. REPORT: COW AND BULL CARCASSES FIRM TO 1.00 HIGHER. DEMAND MODERATE ON VERY LIGHT OFFERINGS OF CUTTER AND LIGHT TO MODERATE OFFERINGS OF OTHER TYPES; MOVEMENT SLOW.

**COW & BULL CARCASSES**  
FOB OMAHA BASIS  
11 LOADS REPORTED.

UT, BRK 2-4 450 AND UP, 3 LOADS, RANGE 91.00-91.50, LATEST ESTB MKT. 91.00-91.50.

UT, BNG 1-3 400 AND UP, 6 LOADS, RANGE 95.50, LATEST ESTB. MKT 95.50.

CUTTER 1-2, 350 AND UP, 1 LOAD, RANGE 106.00, LATEST ESTB. MKT 106.00.

BULLS 500/UP YG 1, 1 LOAD, RANGE 112.00, LATEST ESTB. MKT. 112.00.

**BONELESS PROCESSING BEEF/ BEEF TRIMMINGS**  
123 LOADS REPORTED

FRESH 90% LEAN MOSTLY 2.00-3.00 HIGHER. DEMAND LIGHT TO MODERATE, MOVEMENT MODERATE ON LIGHT TO MODERATE OFFERINGS. BEEF TRIMMINGS LOWER ON LIGHT TO MODERATE DEMAND AND MODERATE OFFERINGS.

FOB OMAHA BASIS: 90% FR 5 LDS RANGE 142.00-144.00, WT AVG 143.20; 90% FZ UNQUOTED; 85% FR RANGE 131.00-133.00, WT AVG 132.50A; 85% FZ RANGE UNQ; 75% FR RANGE 107.00, WT AVG 107.00E; 75% FZ RANGE UNQ, 65% FR UNQ; 65% FZ RANGE UNQ; 50% FR 92 LDS. RANGE 58.00-63.00, WT AVG 60.67, 50% FZ RANGE UNQ, 50% BX RANGE UNQ, BULL 92-94 RANGE 154.00, WT AVG 154.00A.

FOB EAST TX AND OKLA: 90% FR 16 LDS, RANGE 144.00-144.50, WT AVG 144.19; 90% FZ 10 LDS, RANGE

143.00-144.5, WT AVG 143.90; 85% FR RANGE UNQ; 85% FZ RANGE UNQ; 75% FR RANGE UNQ; 75% FZ RANGE UNQ; 65% FR RANGE 91.00, WT AVG 91.00E; 65% FZ UNQ; BULL 92-94 RANGE UNQ.

CAF NORTHEAST AREAS: 90% FR RANGE UNQ; 90% FZ RANGE UNQ; 85% FR RANGE 128.0, WT. AVG. 128.00D; 85% FZ RANGE UNQ; 75% FR RANGE UNQ; 75% FZ RANGE UNQ; 65% FR RANGE UNQ; 65% FZ RANGE UNQ.

\*\*ABCDE AFTER QUOTES REPRESENTS DAYS SINCE LAST ACTUAL MARKET TEST. QUOTES ARE DROPPED AFTER 5 DAYS OF NO TEST OR BEFORE IF THEY NO LONGER REFLECT CURRENT MARKET CONDITIONS.\*\*

**New Wilmington Livestock**

N. Wilmington, PA  
June 17, 1991

**CATTLE** 242...PDA...Compared with last Monday's market: Slaughter cows weak to 55.00-62.25. Breaking Utility & Commercial sl. cows 51.00-55.00, few 55.75-57.75, low yielding to 46.75, Cutter & Boning Utility 48.50-52.75, Canner & Low Cutter 39.25-48.50, Shells down to 30.00. Few Yield Grade No. 1, 1020/1475 lbs. sl. bulls 60.00-64.75, one No. 2, 1625 lbs. 57.75. Feeder Cattle: Few Medium & Large Frame No. 1, 440/595 lbs. heifers 75.50-89.00, 635/880 lbs. 67.00-75.50. Few Medium & Large Frame No. 1, 360/510 lbs. heifers 65.00-77.50. Medium & Large Frame No. 1, 365/565 lbs. bulls 69.50-86.00, few 710/975 lbs. 56.50-62.75.

**CALVES** 284...80% of supply sold to return to the farm. Couple Choice vealers 115.00 and 124.00, one Good 105.00, Standard & Good 90/120 lbs. 80.00-91.00, 60/85 lbs. 55.00-75.00, Utility 40/85 lbs. 40.00-50.00. Farm Calves: Hol. Bulls No. 1, 80/135 lbs. 140.00-190.00, #2, 80/140 lbs. 100.00-167.50; No. 1, Hol. Heifers 80/140 lbs. 135.00-186.00, few No. 2, 85/100 lbs. 80.00-110.00. Beef cross 70/125 lbs. bulls & heifers 120.00-214.00, 150/225 lbs. 110.00-150.00.

**HOGS** 338...Barrows and gilts: steady to strong. US No. 1-2 220/250 lbs. barrows and gilts 54.00-54.85, lot 55.25, 1-3

225/255 lbs. 52.85-54.10, 2-3 240/260 lbs. 51.60-52.75, 1-3 200/215 lbs. 50.00-52.00. SOWS: Few US No. 1-3 375/585 lbs. sows 40.00-44.00. Boars 35.00-41.50.

**FEEDER PIGS** 33...US No. 1-3 35/50 lbs. feeder pigs 31.00-42.00 --- all per head.

**SHEEP** 186...SPRING SLAUGHTER LAMBS...High Choice & Prime 90/115 lbs. spring slaughter lambs 63.00-70.00, Choice 60/95 lbs. 55.00-65.00, Good & Choice 70/95 lbs. 46.00-51.00; Good & Choice 50/80 lbs. feeder lambs 35.00-48.00. Slaughter sheep 9.00-22.00. - all cwt.

**GOATS** 20...Few Large 71.00-80.00, Medium 30.00-47.00, Medium and Small 15.00-30.00 --- all per head.

**Westminster Hay**

Westminster, Md.

Tuesday, June 18, 1991

Report Supplied by Auction

TOTAL LOADS: 25.

ALFALFA: 1.50-2.20 BALE.

ALFALFA MIX: 1.10 BALE.

TIMOTHY: 60.00, 1.25-2.50 BALE.

TIMOTHY MIX: 40.00, 1.00-1.15 BALE.

GRASS HAY: 1.40 BALE.

GRASS ROUND BALES: 12.00 EACH.

BLUEGRASS: 1.45 BALE.

MULCH HAY: .25 BALE.

STRAW: .55-.80 BALE.

**Westminster Livestock Auction**

Hagerstown, Md.

Tuesday, June 18, 1991

Report supplied by auction

**SLAUGHTER COWS:** 67 HD. STEADY PRICES. UTILITY 50.00-55.00; HIGH DRESSING TO 58.00, 1 AT 60.00; CANNERS 47.00-50.00; SHELLY 47.00 DOWN.

**BULLS:** 9 HD. YG#1 1725 LBS. AT 67.75; YG#2 1300-2000 LBS. 62.00-64.50.

**FED STEERS:** 30 HD. NO HIGH CHOICE OR PRIME. CHOICE 1100-1400 LBS. 74.00-76.25; SELECT TO LOW CHOICE 68.00-74.00; SELECT 63.00-68.00; STANDARD HOLSTEINS 53.00-57.00.

**FED HEIFERS:** 12 HEAD. CHOICE 900-1200 LBS. TO 71.00-72.00; LOW CHOICE 66.00-70.00; CHOICE HOLSTEINS TO 67.50.

**VEAL CALVES:** CHOICE 200-300 LBS. 105.00-118.00; GOOD 90.00-103.00; CULLS 75-100 LBS. 78.50-87.00; 50-75 LBS. 65.00-80.00; WEAK/ROUGH 60.00 DOWN.

**FARM CALVES:** HOLSTEIN BULLS #1 85-120 LBS. 175.00-191.00; #2 125.00-170.00; 70-85 LBS. 100.00-160.00; FEW 125-140 LBS. 122.00-155.00; HOLSTEIN HEIFERS 90-125 LBS. 125.00-165.00; BEEF X BULLS 125.00-202.00; HEIFERS TO 120.00.

**BUTCHER HOGS:** 60 HD. \$150 HIGHER. US#1&3 220-260 LBS. 54.00-55.00; 200-215 LBS. 52.00-53.25; 260-280 LB. 50.00-52.00; 280-320 LBS. 43.00-47.00.

**STOCK CATTLE:** 60 HD. STEERS 300-500 LBS. 90.00-99.00; 500-700 LBS. 84.00-97.00; 700-900 LBS. 70.00-79.00; HOLSTEIN 800-100 LBS. 57.00-63.00.

**HEIFERS:** 300-500 LBS. 75.00-90.00; A FEW 95.00-99.00; 500-700 LBS. 65.00-76.00; 700-900 LBS. 61.00-67.00.

**BULLS:** 3 HEAD. 225 LBS. AT 123.00; 300-500 LBS. 89.00-99.00.

**LAMBS:** 240 HEAD. CHOICE 80-100 LBS. 50.00-56.00; 40-80 LBS. 50.00-57.00; MEDIUM TO GOOD 45.00-50.00; PLAIN 45.00 AND DOWN. SHEEP: 70 HEAD 15.00-25.00; YEARLINGS 33.00-44.00.

**GOATS:** 121 HEAD. LARGE 65.00-96.00; MEDIUM 45.00-67.00, SMALL FLESHY 30.00-45.00; THIN 10.00-30.00.

**PIGS AND SHOATS:** BY THE HEAD, 135 HEAD. 15-30 LBS. 24.00-34.00, 35-50 LBS. 35.00-43.00; 60-80 LBS. 47.00-61.00; BY THE POUND, 57 HEAD 65-115 LBS. 67.00-70.00; 150-180 LBS. 47.00-57.00.

**STOCK BOARS:** 15 HEAD. 200-260 LBS. 42.00-44.00; 300-350 LBS. 38.00-39.50.

**SOWS:** 40 HEAD. 300-500 LBS. 42.50-44.75; 500-700 LBS. 43.00-45.75.

**FOR SALE SHAVINGS & SAW DUST**

★ Delivered To Your Location

★ Year Round Supply

★ Excellent for Dairy or Horses

Call For Price To Your Area

**717-653-5935**

*J.D. Martin inc.*

Mt. Joy, PA



Every Wednesday  
At 11:00 A.M.

**GOOD'S AUCTION**

111 Maple Ave.

Leola, PA 17540

717-656-8911

717-656-9554

2 Complete Herd Dispersals from Upstate Pennsylvania:

12 head Jerseys and Jersey Holstein Crossbreds, all fresh, from Butler County. 12 Springing Heifers from Lebanon County

Sell Wed., June 26, 1991.

See Details Page B46

**NEW HOLLAND SALES STABLES INC. THE ACTION AUCTION**

LIVESTOCK IS OUR ONLY BUSINESS

**HORSE SALE**

Fri., July 19 - 7:00 P.M.

Tack 6 P.M.

Horses Hitched 12 Noon

**MONDAY**

**SLAUGHTER HOGS**



**EARLY BIRD HOG SALE**

**8:00 A.M.**

Sell Your Hogs At New Holland Sales Stables, Inc. See them weighed, sold and pickup your check.

**10:00 AM**



**HORSES**

**MULES**



**1:30 PM**

**BEEF SALE**



**SHEEP**

**GOATS**



**CALVES**

**WEDNESDAY**

**HEIFER SALE**

**11:00 AM**

**COW SALE 12:00 NOON**

**HEIFERS BULLS**



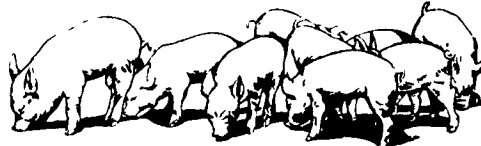
**COWS**

We have the usual run of 50 to 100 Heifers, all ages. Loads of fresh cows and springers from our regular shippers.

Also some local fresh cows and springers.

**1:30 P.M.**

**FEEDER PIG SALE**



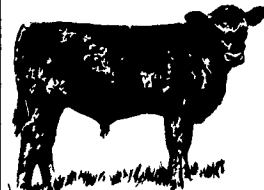
Pigs are accepted after 6:30 A.M. State graded from 8 to 12 Dairy Barn and Feeder Pig Barn are cleaned and disinfected weekly for your protection.

**THURSDAY**

**Beef Auction**

**10:00 A.M.**

**BULLS STEERS BEEF COWS**



**1:00 P.M.**

**STOCKERS**

**&**

**FEEDERS**

**12:30 P.M.**

**SHEEP**

**GOATS**

**CALVES**



**NEW HOLLAND SALES STABLES, INC.**

12 Miles East of Lancaster Off Route 23, New Holland, Penna.

**MANAGERS**

Norman & David Kolb - 717-397-5538

**Field Representatives**

Luke Eberly - 215-267-6608 738-1865

Homer Eberly - 215-267-3047

Ron Ranck - 717-656-9849

**Sale Barn Office Manager**

Roger Floyd - 717-354-4341

FAX # 717-355-0706

**Order Buyer**

Paul Good - 215-445-6662