

**Peoria Sheep**

Peoria, IL

June 18, 1991

SHEEP: 100 TRADING MODERATE. COMPARED WITH LAST TUESDAY SLAUGHTER LAMBS 2.00 TO 3.00 HIGHER  
 SPRING SLAUGHTER LAMBS: CHOICE AND PRIME 100-120 LBS. 53.00-55.00 80-95 LBS. 50.00-52.00  
 OLD CROP LAMBS: CHOICE AND PRIME 100-125 LBS. 48.00.

**Shenandoah Valley Livestock**

Harrisonburg, Va.

June 15, 1991

Report supplied by auction

STEERS: M&L-1 300-500 LBS. 92.00-112.00; 500-700 LBS. 86.00-103.00; 700-1000 LBS. 71.50-83.00.  
 S-L&M&L-2: 300-500 LBS. 87.00-98.50; 500-700 LBS. 77.00-89.50.  
 FEEDER BULLS: M&L-1 300-500 LBS. 88.00-105.50; 500-700 LBS. 80.00-92.50; 700-800 LBS. 61.00-69.00.  
 HEIFERS: M&L-1 300-500 LBS. 83.50-100.00; 500-700 LBS. 77.00-86.00; 700-1000 LBS. 72.50-80.00.  
 S-L&M&L-2 300-500 LBS. 74.00-81.50, 500-700 LBS. 71.00-80.00; 700-1000 LBS. 66.50-70.00.  
 STOCK COWS: BEEF, PAIRS 75.00-90.00; SPRINGERS 50.00-57.50. BABY CALVES BY THE HEAD, 50.00, 75.00, 133.00; CWT. 90-135.  
 SLAUGHTER COWS: HIGH YIELDING COWS 52.50-54.00, UTILITY AND COMMERCIAL 2-4 47.50-52.50; CANNERS AND CUTTERS 1-3 44.00-47.50  
 SLAUGHTER BULLS: 59.00-61.50.  
 LAMBS: BLUE O HIGH CHOICE & PRIME 55.00; RED O CHOICE 48.50; FEEDER LAMBS CHOICE 55.00-55.50; SLAUGHTER EWES 10.00-12.50.  
 HOGS: US 1-3 200-240 LBS. 51.00; SOWS 1-3 40.00-44.25; BOARS 34.75.  
 VEALS: CHOICE AND PRIME 250-500 LBS. 79.00-88.50.

**Belleville Livestock**

Belleville, PA

June 19, 1991

CATTLE 95... REPORT IS SUPPLIED BY THE AUCTION... Compared with last Wednesday's market: Utility sl. heifers 60.25-63.75. Breaking Utility and Commercial slaughter cows 52.35-57.85, Cutter

and Boning Utility 51.00-53.50, Canner and Low Cutter 47.85-52.50, Shells down to 45.85. Yield Grade No. 1, slaughter bulls 60.75-67.35. Feeder Cattle: Steers 70.00-93.00.

CALVES 105...FARM CALVES: Holstein bulls, No. 1, 165.00-198.00, No. 2, 140.00-170.00.

HOGS 79...Barrows and gilts: US No. 1-2 215/245 lbs. 56.25-57.25, 1-3 200/290 lbs. 51.00-55.00. US No. 1-3 sows 43.00-51.00. Boars 39.00-41.50.

FEEDER PIGS 157...US No. 1-3 30/45 lbs. feeder Pigs 27.00-56.00 --- all per head.

SHEEP 63...Spring slaughter lambs: High Choice & Prime spring slaughter lambs 68.00-90.00, Good 44.00-75.00. Slaughter sheep 5.00-28.00 - all Cwt. GOATS 11...25.00-81.00 --- all per head.

**Friend's Stockyard Inc.**

Accident, Md. 21520

June 17, 1991

STOCK BULLS AND STEERS (200-500 LBS.) 80.00-116.00.  
 STOCK HEIFERS 70.00-95.00.  
 SLAUGHTER STEERS GOOD TO CHOICE 74.00-76.85; MEDIUM TO GOOD 67.50-74.00.  
 HOLSTEIN STEERS HEAVY 62.50-65.00; LIGHT 60.00-72.50.  
 SLAUGHTER HEIFERS GOOD TO CHOICE 72.00-75.50; MEDIUM TO GOOD 64.00-72.00.  
 BULLS HEAVY 62.50-72.50; LIGHT 58.00-66.50.  
 COWS FEW HIGH DRESSING 56.00-61.50, UTILITY HOLSTEIN 50.00-55.00, CANNERS 45.50-52.50, COMMERCIAL TO GOOD 45.00-52.00, CULL COWS 43.00 AND DOWN.  
 VEALS GOOD TO CHOICE 90.00-135.00, MEDIUM TO GOOD 65.00-88.00.  
 BOB CALVES 80.00 AND DOWN.  
 HOLSTEIN BULL CALVES, RETURN TO FARM (90-120 LBS.) 165.00-196.00.  
 HOLSTEIN HEIFER CALVES, RETURN TO FARM (100-120 LBS.) 110.00-157.50.  
 HOGS TOP QUALITY 54.00-55.00, HEAVY 53.50-54.85, LIGHT 45.00-51.00.  
 SOWS 38.00-45.00.  
 MALE HOGS: 34.00-38.00.  
 EGGS: LARGE .53-.76; MEDIUM .50; SMALL NONE AVAILABLE.  
 LIVESTOCK PRICES ARE ALL GIVEN PER HUNDREDWEIGHT!

**St. Louis Cattle,**

**Hogs**

June 20, 1991

CATTLE AND CALVES: 225 ( 0 SLTR, 225 FDRS)  
 SUPPLY CONSISTS OF FEEDER CATTLE AND COWS FOR THE REGULAR THURSDAY AUCTION.  
 NO TEST ON SLAUGHTER CATTLE.

SLAUGHTER CLASSES: COWS: CUTT, UTIL, COMM BULK SALES H-DRESS % LO-DRESS % BREAKING 2-4 BONING 1-2 LOW TO AVG. CUTTER RECEIPTS THIS WEEK 800: WEEK AGO 1,100: YEAR AGO 900 FOR THE WEEK, SLAUGHTER STEERS AND HEIFERS .50-1.00 LOWER. COWS 1.00 HIGHER.  
 BULLS SCARCE, FEW SALES STEADY.

**Kutztown Produce Auction**

Fleetwood, PA

June 17, 18 & 20, 1991

10 A.M.

Report Supplied by Auction

ASPARAGUS: 1.90 12 OZ BUNCH  
 GREEN BEANS: 7.00-16.50 1/2 BU  
 YELLOW WAX BEANS: 9.50-16.00 1/2 BU.  
 BLUEBERRIES: 18.00-21.00.  
 BROCCOLI: 3.00 6-8 HEAD CT  
 CABBAGE: 7.20-7.80 12 CT HEAD  
 CANTALOUPE: SMALL-MED. 60-85, MED.-LARGE 1.00-1.55 EA.  
 CAULIFLOWER: 25 HEAD.  
 CHERRIES: (SWEET) 4.40-15.20 8 QT. FLAT (SOUR) 4.00-10.50 8 QT. FLAT.  
 CUCUMBERS: 5.00-10.50 1 1/2 BU  
 CUT FLOWERS: 1.80 BOUQUET.  
 EGGS: .50-.70 DOZ.  
 LETTUCE: 5.40-7.20 12 CT. HEAD.  
 PICKLES: 4.50 1/2 BU.  
 POTATOES: NEW 4.80-8.00 PK.; RED 3.60-8.00 PK.; 6.25-9.00 1/2 BU.  
 RASPBERRIES: BLACK 1.15-1.25 1/2 PT., 1.90-2.40 PT.; RED 1.40-1.75; TAY-BERRY 1.15-1.25 1/2 PT.  
 RED BEETS: 2.25-7.50 15 CT.  
 RHUBARB: .45-.80 LB.  
 HULL PEAS: 5.50-18.00 1/2 BU.  
 SNAP PEAS: 3.50-7.00 10 LB.  
 SUGAR PEAS: 3.50 10 LBS.  
 SPRING ONIONS: 6.00-20.00 40 CT. BUNCH.  
 STRAWBERRIES: 12.00-14.00 8 QT.

**Lancaster Farming, Saturday, June 22, 1991-A17**

FLAT.

SWEET CORN: 2.65-2.75 DOZ.  
 WATERMELONS: SUGAR BABY 2.10-2.75 EA.  
 TOMATOES: (GREENHOUSE) #1 10.00-21.00 10 LB.  
 ZUCCHINI: GREEN 2.00-6.50 1/2 BU., YELLOW 3.00-9.00 1/2 BU.  
 FLOWER BEDDING PLANTS: 1.50-5.00 FLAT, HANGING BASKETS 1.50-6.00.  
 GERANIUMS: .50-1.00 EA.  
 VEGETABLES- EGGPLANTS, PEPPERS, TOMATOES, ETC. 4.00 FLAT.  
 NURSERY STOCK: POTTED SHRUBS .25-1.00 EA. AND 4.00-6.00 EACH.

**Penns Valley Livestock Market, Inc.**

Auction every

Tues. 7 p.m.

Centre Hall, Pa.

Report supplied by Auction

Tues., June 18, 1991

RETURN TO FARM CALF 1.40-2.11  
 GOOD VEAL 90.00-139.00.  
 COMMON VEAL 40.00-89.00  
 CHOICE STEERS 72.00-73.50  
 SELECT STEERS 68.00-71.00  
 COMMON STEERS 65.00-67.00.  
 COMMERCIAL COWS 49.00-56.00  
 CANNERS-CUTTERS 47.00-54.00.  
 SHELLS 40.00-46.00.  
 SELECT HEIFERS: 60.00-66.00  
 COMMON HEIFERS 54.00-60.00.  
 GOOD FEEDERS 95.00-104.00  
 COMMON FEEDERS 53.00-94.00.  
 BULLS 53.00-64.00.  
 GOOD HOGS 53.00-55.00.

**Jersey Shore Livestock Market, Inc.**

Auction every Thursday

at 4:00 p.m.

Jersey Shore, Pa.

Report supplied by Auction

Thursday, June 20, 1991

RETURN TO FARM CALF 1.30-2.00.  
 GOOD VEAL: 90.00-129.00.  
 COMMON VEAL 45.00-89.00.  
 CHOICE STEERS: 73.00-76.00.  
 SELECT STEERS 66.00-72.00.  
 COMMERCIAL COWS 52.00-59.00.  
 CANNERS-CUTTERS 46.00-55.00.  
 SHELLS 42.00-44.00.  
 CHOICE HEIFERS: 72.00-74.25.  
 SELECT HEIFERS 68.00-71.00.

COMMON HEIFERS 54.00-67.00.  
 GOOD FEEDERS 75.00-85.00.  
 COMMON FEEDERS 53.00-74.00.  
 BULLS 57.00-68.00.  
 GOOD HOGS 54.00-56.25.  
 HEAVY HOGS 51.00-53.00.

**Indiana Livestock**

Homer City, PA

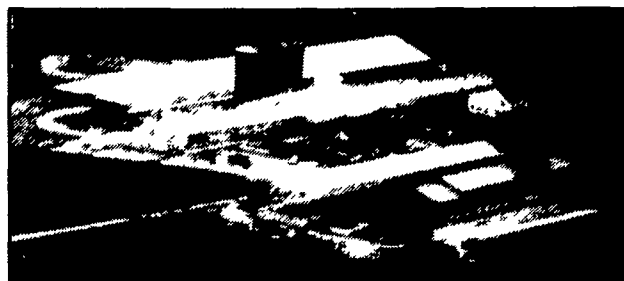
Thursday, June 20, 1991

Report supplied by PDA

CATTLE 192 SL STEERS .50-1.00 LOWER, SL COWS MOSTLY 1.00 HIGHER, H CH & PR SL STEERS 76.25 CH 72.00-75.25, LOW DRESSING TO 70.00, SEL & LOW CH 73.50-76.25, SELECT 68.00-72.00, STAND 60.00-67.25 CH. 69.00-71.75 TO HIGH YIELDING 73.75-76.00 BREAKING UT & COMMERCIAL SL COWS 51.75-55.50, FEW 56.00-57.00, LOW DRESSING TO 49.00, CUTTER & BONT 50.00-54.00, CANNER & LO CUTTER 40.00-50.00, SHELLS DOWN TO 35.00 YIELD GRADE NO 1 1165/1650 LBS SL BULLS 61.25 66.00, NO 2 1130/1430 LBS 57.75-58.25  
 FEEDER CATTLE STEERS M-1&2 370-490 LBS 83.00-88.00, M&L-1 810-1055 LBS 64.00-70.75 HEIFERS M 1&2 410/510 LBS 68.00-82.00, M&L 1 710/910 LBS 60.00-70.00  
 CALVES 142 85% RETURNED TO FARM CHOICE 109.00-117.00, GOOD 107.00 STAND & GD 60/110 LBS 75.00 92.00 NO 1, HOLSTEIN BULLS 80/135 LBS 145.00-201.00, NO 2 80/130 LBS 100.00-157.50, 70/75 LBS 90.00-102.50 NO 1, HOL HEIFERS 80/140 LBS 125.00-180.00, FEW 70/80 LBS 85.00-122.50 BEEF CROSS 70/150 LBS BULLS & HEIFERS 110.00-205.00  
 HOGS: 48. BARROWS & GILTS 2.00-2.50 HIGHER US 1-3 215/240 LBS 56.00-56.75. US NO 1-3 440/550 LBS 44.25-47.25 BOARS 30.00-33.25, LT COUPLE WT 46.00-47.50  
 FEEDER PIGS: 4.  
 SHEEP: 50. CHOICE 50/80 LBS 54.00-59.00, 90/95 LBS 48.00-55.00 SLAUGHTER SHEEP 10.00-21.00.  
 GOATS: 3. MEDIUM 26.00-46.00

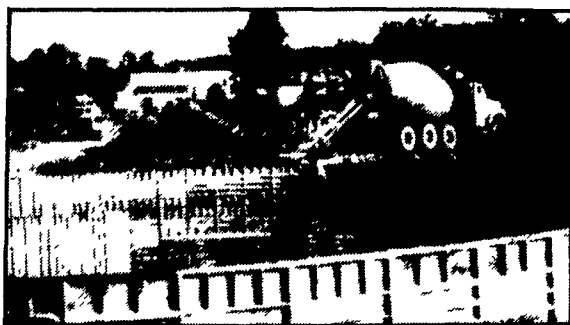
**POURED SOLID CONCRETE STORAGE SYSTEMS**

*17 Years Experience In Pouring Concrete Manure Pits!*

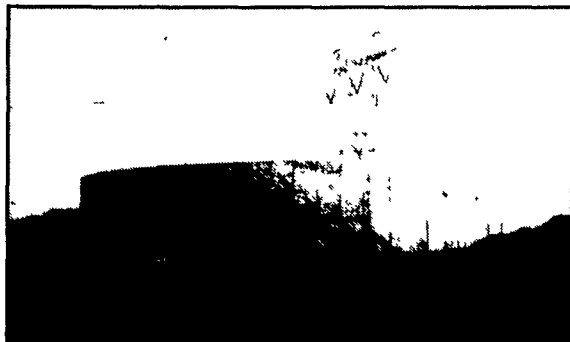


Far Left: 1-Million Gallon Circular Manure Storage Tank

Far Right: 2 Silage Pits In-Barn Manure Receiving Pit



Construction Of Partially In-Ground Liquid Manure Tank - 400,000 Gallons



Above Ground Liquid Manure Tank 425,000 Gallons



300' Long Manure Pit For Hog Confinement

**CONCRETE PUMPING SERVICE AVAILABLE**



Mixer And Boom Trucks



92' Boom Placing Concrete



Placing Concrete On Site

**Take the questions out of your new construction. Call Balmer Bros. for quality engineered walls.**

All sizes available round or rectangular

*Invest in Quality - It will last a lifetime.*

**Balmer Bros.**

**CONCRETE WORK, INC.**

243 Miller Road Akron, PA 17501

(717) 733-0353  
 6:30 AM - 3:30 PM

(717) 859-2074  
 After 6:00 PM