

# SLURRY BUGGY



1500-gal. Tank Will Load in Approx. 1 1/2 Min.

Check These Outstanding Features on the SLURRY BUGGY

A liquid manure spreader that loads and unloads and has no chains, bearings, fans, augers, or moving parts that touch manure

- ✓ A 6-inch hydraulic operated brass valve for unloading
- ✓ Has 3 different manure spreading patterns
- ✓ Tank has a float level indicator and sight glass
- ✓ A 20-inch rear manhole for easy access to tank
- ✓ Tanks are made of 5/16 thick metal
- ✓ Large air-cooled vacuum pump
- ✓ Pump has not only a primary trap, but also a large secondary moisture trap
- ✓ Pump has an air pre-cleaner



The Slurry Buggy Spreader is designed for

- 1 Injecting liquid
- 2 Side dressing your liquid manure on fields from lanes or roadways in wet weather
- 3 Top dressing hay fields, etc



Valves, Fittings and Accessories 6" & 8" Fittings In Stock

We Have Spreaders To Rent - 1500 & 2900 Gallon

FOR FREE LITERATURE CALL OR WRITE

## SLURRY BUGGY EQUIPMENT COMPANY

194 S. GROFFDALE RD., LEOLA, PA  
LANCASTER COUNTY, PA 17522  
PHONE (717) 656-3249

## Best Buys in Used Equipment

### TRACTORS

- Case 2294 w/Cab
- Case IH 2096 Tractor
- IH 826 Dsl. Gear Drive
- IH 656 Dsl.
- IH 584 Dsl. w/2250 Ldr.
- IH 3688 Dsl. w/Cab
- Oliver 1755 Dsl.
- Oliver 550 w/Ldr.
- AC Model C Tractor
- IH 966 Tractor
- IH 886 Dsl. w/ROPS
- IH 1086 Dsl. w/Cab

### HARVESTING EQUIPMENT

- IH 820 Flex Head 16 1/2'
- IH 810 Platform 15' w/Hart-Carter Flex Bar
- IH 1460 Combine
- IH 203 Combine
- Case 660 Combine

### SKID LOADERS

- Case 1818 Gas
  - Case 1830, Gas
  - IH 4140 Dsl.
  - IH 4130 Gas
  - OMC 1700 Dsl.
- ### TILLAGE
- IH 350 Disc, 9'3"
  - IH 531 Plow 3x14
  - IH 480 Disc Harrow, 13'
  - IH 470 Disc, 11'6"
  - IH 450 3x16 Plow
  - Dunham Lehr Packer, 10'
  - Brillion Chisel Plow, 7'
  - IH 55 Chisel Plow, 11'
  - AC 18' Folding Disc
  - Chattanooga Cultimulcher 22'

### PLANTING & SEEDING

- White 5400 Planter
- IH 800 6RN Planter

- IH 510 Grain Drill, 16x7
- Case IH 5100 Grain Drill 24x6

### MATERIAL HANDLING

- IH 1050 Grinder Mixer
- IH 2350 Loader
- NI 3639 Manure Spreader
- NI 213 Spreader
- Hawk Bilt 2155 Manure Spreader
- IH 1150 Grinder Mixer
- NI 352 Manure Spreader
- Zimmerman 32' Elevator
- Hardi 500 Gal. Sprayer

### UNI EQUIPMENT

- 704 Power Unit
- 717 Combine
- 727 Husking Bed
- 838 Husking Bed
- 768, 3R Corn Head

### HAY & FORAGE

- Lely Model HL 14 Rake Tedder
- Brady 144 Shredder 12'
- Case 220 Square Baler
- Gehl 99 Blower
- Gehl FB85 Table Blower
- IH 881 Forage Harvester w/2 Row Corn Head
- NH 276 Baler w/Thrower
- NH 495 Haybine
- Badger 950 Forage Wagon
- NH 1495 Windrower
- Hesston 6550 Windrower, 12'
- IH 56 Blower
- NH 25 Blower
- JD 716A Forage Wagon
- Gehl 920 Forage Wagon
- IH 110 Forage Wagon
- IH 1190 Mower Conditioner
- IH 600 Blower

## CHAMBERSBURG FARM SERVICE, INC.

975 S. Main St. Chambersburg, PA  
(717) 264-3533 1-800-447-6830



bobcat

Featuring A Grader This Month!  
Call For Details  
NEW BOBCAT

- |      |      |
|------|------|
| 440B | 642B |
| 742B | 743B |
| 753  | 843  |
- 1600 Articulated Loader  
709 Backhoe Grader  
Augers And Buckets

**SHEETS BROS.**  
1061 Carlisle St.  
Hanover, Penna.  
717-632-3660

## ZETOR

Color 52110 43 Hp.  
S10,575 Base  
Special On All 77  
Series w/ Turbo

**SHEETS BROS**  
1061 Carlisle St.  
Hanover, Pa.  
(717) 632-3660

### PEQUEA

NEW HAY TEDDERS 7-9 FT PTO  
Steel Bale Throw Racks - 16-18 Ft.  
Wagon Gears - 6-8-10 Ton 12 Ton Tandem  
Pequea Trailers - 4x8 - 6x10 - 6x16 Ft.

### USED MACHINERY

AVCO NI #272, Cut-ditioner, Good Condition  
JD KBA 9' Transport Disc  
NH 469 Haybine, Good Condition

### HENRY HORNING

404 W. Newport Rd., Lititz, PA 17543  
717-626-5033

## Martin Tractor

866 Greenspring Rd., Newville, PA 17241

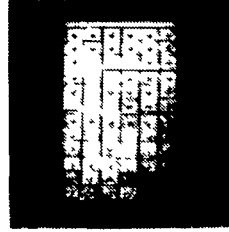
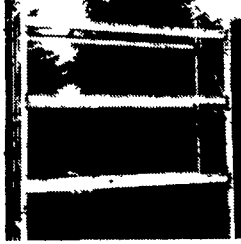
### Dismantled Tractors For Parts

AC; B, WC, WD, D14, D15, D17, D19, 5040, XT190, 200, 7030, 7040; DB: 990, 1210; CASE: VAC, SC, DC, LA, 430, 570, 600, 700, 730, 830, 870, 930, 970, 1030, 1070, 1270, 1370, 1410; COCKSHOT; 30; DEUTZ: 5506; 9006; FORD: 9N, Jubilee, 851, 971, 3000, 4000, 5000, 6000, 8000, 9600, 9600; IH: H, M, MTA, Super C, W4, WD9, 200, 240, B275, 300, 350, 400, 404, 450, 480, 484, 504, 544, 560, 574, 584, 656, 666, 706, 756, 806, 826, 856, 884, 966, 986, 1066, 1206, 1256, 1466, 1586; JD: A, B, 40, 50, 60, 70, 420, 520, 530, 620, 630, 720, 730, 1020, 1520, 1530, 2010, 2020, 2040, 2510, 2630, 2750, 3010, 3020, 4010, 4020, 4030, 4230, 4320, 4430, 4620, 4630, 5020, 6030, 8430; Long: 460; MH: 33, 44; MM: 4 Star, 5 Star, Jetstar 3, 445, 602, 670, GVI, G900; G1000; G1000 Vista, G1050; Oliver: Super 55, 60, 66, 70, 77, 88, 770, 1450, 1550, 1600, 1650, 1750, 1755, 1800, 1850, 1855, 1950, 1955, 2050.

717-776-7542

MON-FRI 8-5  
SAT 8-12  
No Sunday Calls Will Ship UPS  
No Out Of State Personal Checks

## FREE Inventory List FREE Call or Write!!!



Racking & Shelving Utility Trailers Parts Bin Units Hough 80 Loader  
Large Quantity Of Overstocked Material - Must Sell:

Alum. & Steel Sheets  
Electrical Wire  
Walkin Coolers  
Generator Sets  
Concrete Decking  
Metal Shear & Brake  
Clam & Drag Buckets

88 Chevy High Cube  
86 F-350 Stake  
84 F-150 4x4 ★  
910 Cat Loader  
3406 Cat Mtr.  
300 Cummins Mtr.  
Forklift-Air Tires  
45' Van & Flat Trls.

Pallet Racking  
Shelving...  
Parts Bins & Tubs  
Steel & I-Beam  
Work Tables  
Display Shelving  
Alum. Panels

★★★★★★

We Buy & Sell!!!!

## CHAS COLEMAN

(717) 692-4444  
Millersburg, Pa. 17061

## COLLECTORS CORNER

### JOHN DEERE'S

- (3) 830's
- (8) 730's
- (3) 630's
- (1) 530
- (2) 435's
- (5) 430's
- (5) 820's
- (3) 720's
- (3) 620's
- (3) 520's
- (3) 420's

- (3) 320's
- (4) 80's
- (2) 70's
- (3) 60's
- 50
- (3) 40's
- (8) A's
- (7) B's
- (4) D's
- (3) G's & GM's

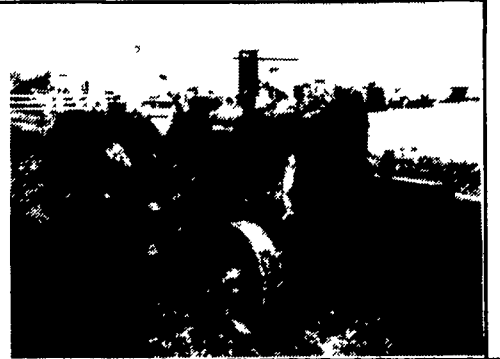
- (5) H's
- (6) L's, LA's, LI's
- (5) M's, MT's
- (2) R's
- 4020 P.S.
- High Crop
- (2) 440 Crawler's

### OTHERS

- Case VAC- WF- 3 Pt.
- (2) Case 400 HI Crop
- Case 830 HI Crop
- Ford 2000-100 Hours
- (2) Ford 8N- 1 Has 400 Hours
- Farmall 560- 1500 Hours
- IH Spirit Lawn & Garden w/Tools
- Ferguson 35- New
- MH Pony
- Oliver 1550 HI Crop
- Oliver 1650 HI Crop
- Oliver Super 77 HI Crop
- Oliver 60
- Oliver 66
- (2) Oliver Super 77
- (2) Oliver HG Crawler
- Oliver OC46 Loader

1930 JD "D" On Full Factory Steel, Motor Is Loose, Good Restoration Project.

\$1900.00



## WENGERS INC.

251 SOUTH RACE STREET, MYERSTOWN, PA 17067

HOURS:  
Mon.-Fri.  
7:30 To 5:00  
Saturday  
7:30 To Noon

717-866-2130  
(Days)

717-866-7147  
Or (After 5:30 P.M.)