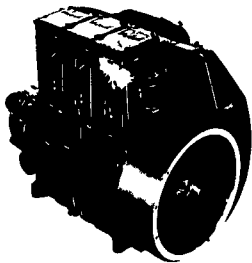


HDS The Small Diesel ENGINE SHOP



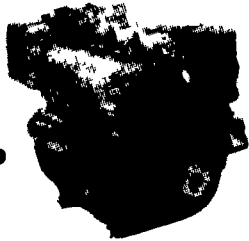
TR-3



1 1/2 to 132 HP

Small Air Cooled Large Water-Cooled

4 To 80 HP



World's Largest Manufacturer Of Small Air-Cooled Diesel Engines

WE MAKE COMPLETE INSTALLATION INCLUDING LINE SHAFT, AUTOMATIC START WITH SAFETY SHUTDOWN, ETC.

Distributed for Lister/Petter and Lombardini Diesel Engines 6-8 12V Regulated CHARGE-MASTER Battery Charger

HOOVER DIESEL SERVICE

255 Mascot Rd., Ronks, PA 17572
(717) 656-3322 (717) 295-1729

DEALER INQUIRIES INVITED

GIVE US A TRY - CHECK OUR PRICES

DIESEL OUR SPECIALTY

SMUCKER'S SALES & SERVICE, INC.

RD #2, Box 21 New Holland PA 17557

(717) 354-4158

If No Answer, 24 Hr. Service, Call (717) 354-1374
DIESEL AND REFRIGERATION SERVICE

Authorized Dealer Specializing In LISTER And Also PETTER Diesel Engines



TS2/TS3 AIR-COOLED DIESELS 1 1/2 to 132 H.P.

LISTER AIR-COOLED



Ask About Diesel And Bulk Tanks - Completely Installed



Available: Used Mueller - Sunset - Girton - Bulk Tanks

WANTED:

Good Used Tanks - Any Size
Call Collect
1-301-797-3921



DURA FENCE

- If You Call, We'll Install -

High Tensile Split Rail Board Fence (Free Estimates)

R D #1 Box 210 Beaver Springs, Pa. 17812

Robert Martin (717) 658-4470



Milk IS the real thing!

A 1st Class Team Together For 25 Years!



RUFUS BRUBAKER REFRIGERATION

And...

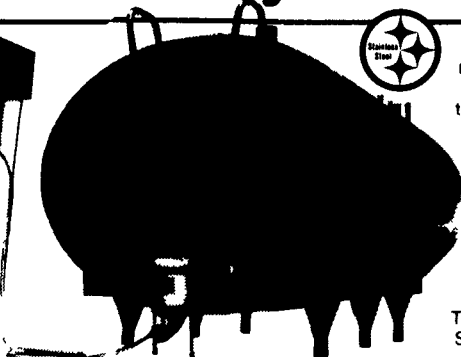
MUELLER Dairy Farm Equipment

"The Ultimate Measure of a Cooler's Worth is its Performance!" ... and when you put your milk in a Mueller HiPerForm

...its like Money in the Bank!

The HiPerForm Electronic Refrigeration Washing System has a new look and new features!

- Alarm Circuit
- Pre-start Control
- Manual Bypass
- Digital Display
- Automatic Interval Agitator
- Agitate Time Switch
- Digital Temperature Readings



Mueller Model "OH" Milk Coolers not only look good, they offer the ultimate in sanitary design and are 100% stainless steel!

FIELD SERVICE TRAINED DISTRIBUTORS offer INSTALLATION and 24 HOUR SERVICE to ensure the safekeeping of your milk!

MUELLER HiPerForm

Southern Service Center
468 Dry Wells Rd.
Quarryville, Pa.
717-786-1617
Vic Leininger

MAIN OFFICE

1048 North Penryn Rd.
Manheim, Pa. 17545

717-665-3525
Ken or Ed Brubaker

Northern Service Center
541 Frystown Rd.
Myerstown, Pa.
717-933-4711
Ken Kopp

★ 24 Hour Service in S.E. PA, S. Jersey, Delaware N.E. And Eastern Shore Maryland!

★ Call Today For All Your New or Used Milk Tank And Refrigeration Equipment Needs!

JUNE DAIRY MONTH SPECIALS



BIG 10% CASH DISCOUNTS



STEEL BARN EQUIPMENT

LOOP STALLS



- * Super Tough Finish
- * Protection From Rust & Corrosion
- * Superior Electrical Insulation
- * Chip Resistant
- * Resists Acid & Chemicals
- * Smoother Finish Stays Cleaner

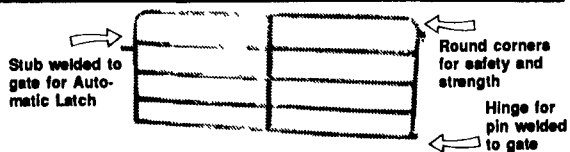
All Loop Stalls Are Coated With Baked on Top Grade Polyester TGIC Powder Coating After Fabrication

Zimmerman Loop Stalls Are Constructed Of:
* Spray Arc Transfer Method Used On Welds
* 2 3/8" Outside Diameter High Yield Steel Tubing With A 12 Ga. (.108) Wall

GATES and FENCING

Standard Heights For Gates & Fencing:

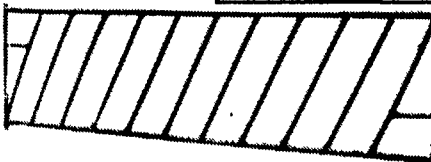
- 38" High - 4 Bar
- 48" High - 5 Bar
- 54" High - 6 Bar



All Gates & Fencing Made Of 1.9" Outside Diameter High Yield Steel Tubing With 13 Ga. Wall

SLANT BAR FEED THRU FENCE

Custom Built To Any Length



HEADLOCKS

THREE SIZES AVAILABLE
SMALL - For Calves Up To 15 Mo.
ADJUSTABLE - For Heifers & Cows 8 Mo. And Older (Pictured)
LARGE - For Cows 15 Mo. & Older



Call Us For Your Complete Heifer And Dairy Barn System Needs!

WE DELIVER AND INSTALL!

YOU WON'T BEAT OUR PRICES & SERVICE

LAPP'S BARN EQUIPMENT

5935 OLD PHILADELPHIA PIKE, GAP, PA 17527

PHONE: 717-442-8134

WE SERVICE WHAT WE SELL

- Radio Dispatched Trucks -



Fisher & Thompson Inc.

DAIRY & MILKING EQUIPMENT SALES & SERVICE

24 HOUR SERVICE

We Ship Parts Daily UPS

ON THE FARM ROUTE SERVICE

USED EQUIPMENT

- (3) 60# Westfalia Bucket Milker Units w/DeLaval Claw, Very Good Cond.
- (2) Surge Alamo 75 Vac. Pumps
- (8) Westfalia ACR I Detachers
- (16) Surge HTO Auto. Take-Offs
- (1) Pipeline Washer 2 Jar Type, Good Shape

AMOS FISHER RES: 717-687-8871
RICK THOMPSON RES.: 717-627-1162
MERLE RESSLER RES 717-354-8758

127 NEWPORT RD
LEOLA, PA 17540
717-656-3307



LIVESTOCK EQUIPMENT

FOR SALE SHAVINGS & SAW DUST

- ★ Delivered To Your Location
- ★ Year Round Supply
- ★ Excellent for Dairy or Horses

Call For Price To Your Area
717-653-5935

J.D. Martin inc.

Mt. Joy, PA