

# Lancaster Co. DHIA

# dhia

Pennsylvania Dairy Herd Improvement Association

APRIL 1991

A Holstein cow owned by Weaver Homestead Farm, 235 White Oak Road, New Holland had the highest 305 day lactation by protein. 85 produced 28,409 lbs. of milk, 952 lbs. of protein with a 3.3% test. Second high lactation was completed by a Holstein cow owned by Alvin W. Sensenig, 2223 Bald Eagle Road, Drumore. 64 produced 26,687 lbs. of milk, 897 lbs. of protein with a 3.3% test in 305 days.

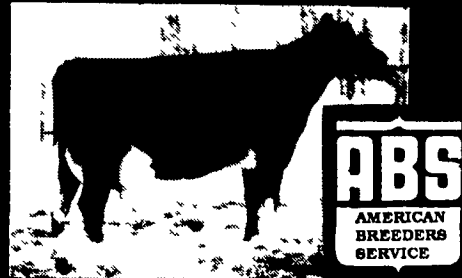
**FIRST 305 DAYS OF LACTATION WITH 680 or more lbs. of protein**

OWNER - COW'S NAME	BREED	AGE	DAYS	MILK	PRO	PRO. TEST	PAT
Weaver Homestead Farm							
85	GrH	3-5	305	28,409	3.3	952 3.9	1120
78	3-3	3-3	305	25,331	2.8	728 3.9	1006
28	GrH	3-3	305	19,958	3.5	716 5.1	1017
Alvin W. Sensenig							
64	GrH	4-2	305	26,687	3.3	897 3.3	887
15	RH	8-2	305	24,798	3.2	807 3.6	905
26	GrH	7-8	294	23,784	3.2	781 3.3	795
59	RH	3-3	305	22,837	3.2	746 3.1	710
Amos B. Stoltzfus Farm Z							
Ruth	GrH	5-10	305	29,428	3.0	889 2.8	837
Doris	GrH	305	305	23,144	3.2	753 3.2	752
Melody	RH	2-3	305	22,374	3.2	723 4.0	894
Carrie	GrH	4-3	305	24,624	2.8	703 2.7	688
Walnut Run Farm							
780	GrH	2-11	305	29,251	3.0	879 3.1	912
671	RH	4-4	299	28,033	3.0	844 3.0	860
770	GrH	3-3	303	22,690	3.3	751 3.6	829
765	RH	3-2	270	22,887	3.1	729 3.7	850
851	GrH	1-11	305	23,445	3.0	720 3.3	780
776	RH	3-0	305	21,617	3.3	716 3.7	809
Wea-Land Farm							
Bee	RH	6-0	305	25,609	3.3	866 4.2	1099
Carmels	RH	2-10	305	26,049	2.9	771 2.8	752
Joy	RH	6-6	305	26,282	2.8	741 3.3	872
Fran	RH	1-11	305	21,608	3.1	682 3.9	850
Penn Har Va Farms							
Trixine	RH	6-4	305	25,254	3.4	865 3.6	925
Exquisi	RH	5-6	305	23,748	3.1	753 3.7	881

Norman L. Hershey	RH	4-2	305	25,278	3.3	854 3.9	1008
Miki							
Edwin Sensenig	GrH	5-2	305	27,543	3.0	850 4.0	1111
19	GrH	6-7	304	24,028	3.2	779 3.5	858
34							
Elmer B. Beiler	GrH	12-1	305	28,584	2.9	849 2.9	855
1	GrH	3-7	305	23,298	3.2	747 3.5	830
53							
Ivan Zook & Sons							
250	RH	3-1	305	27,466	3.0	843 3.4	944
185	RH	5-9	305	25,507	3.0	766 3.5	908
238	RH	3-10	305	21,485	3.3	729 3.8	831
J. Harold Fritz							
101	GrH	4-6	305	26,675	3.1	842 2.8	747
72	GrH	4-2	288	20,463	3.4	706 3.5	729
4	RH	2-5	305	20,321	3.3	681 3.0	611
David R. venger							
Tony	RH	5-8	305	26,423	3.1	837 2.6	701
Red Knob Farm							
657	GrH	5-8	305	27,116	3.0	834 3.2	878
715	GrH	5-1	305	24,149	3.1	766 2.7	666
869	GrH	3-7	305	22,880	3.2	745 3.8	869
880	GrH	3-5	305	25,682	2.8	736 3.2	835
896	GrH	3-3	288	22,056	3.2	726 3.0	664
889	GrH	3-4	305	21,275	3.3	709 2.6	559
878	GrH	3-6	305	22,876	3.0	707 3.4	782
714	GrH	5-1	305	21,246	3.2	690 3.0	653
828	GrH	4-0	305	23,485	2.9	681 3.5	842
Elmer M. High							
8	RH	6-7	305	24,838	3.3	829 3.7	928
69	RH	2-11	305	25,722	3.0	793 3.9	1024
14	RH	7-9	275	23,207	3.1	731 3.8	882
58	RH	7-8	305	24,811	2.7	684 3.9	985
Graywood Farms							
159	GrH	7-8	305	29,050	2.8	825 2.5	746
201	GrH	3-5	305	26,002	3.0	791 2.7	711
150	GrH	3-2	305	20,266	3.5	725 4.3	887
492	GrH	6-7	305	23,198	3.0	706 3.6	852
376	GrH	3-4	305	23,287	2.9	693 2.7	642
1	GrH	3-5	299	21,887	3.1	687 4.1	908
John H. Howard							
Judy	RH	7-8	305	27,531	3.0	825 3.9	1073
Rhelda & Lynn Royer							
Flirt	RH	4-5	305	27,030	3.0	823 3.0	817
Dena	RH	6-6	305	23,781	3.3	785 3.8	912
Desi	RH	7-3	305	22,664	3.3	760 3.7	856
Camay	RH	3-2	305	21,979	3.2	717 3.2	708
Belle	RH	4-2	305	20,811	3.3	699 3.5	739
King-Ridge Farm							
Dandy	RH	4-8	305	26,172	3.1	817 3.3	886
Arlinda	RH	3-3	305	24,624	3.0	744 3.4	853
David & Robin Dum							
16	RH	4-0	305	27,385	2.9	815 3.1	872
3131	RH	2-11	305	27,131	3.0	814 3.0	817
33	RH	5-11	305	26,161	2.9	769 3.2	836
3205	RH	3-7	305	23,163	3.2	744 2.8	670
163	RH	2-10	305	24,136	2.9	714 3.2	774
117	RH	1-10	305	22,197	3.0	683 3.2	728
Elam M. Beiler							
Dapper	GrH	3-3	305	25,468	3.2	815 2.6	668
Nancy	RH	7-5	305	24,103	2.9	709 3.1	755

(Turn to Page C9)

## WATCH ROK - He Is Proof Solid ABS BULLS GOING UP!



29H5925 ROK  
945TPI CFP 109  
PTAT +1.97 UC +1.17  
Presently 1-90 USDA/HA

Sire Analysts are looking for top pedigreed ROK dtrs

Dtr Strom Rok Ronnie VIP-Grade  
4-02 2X 323 23,261M 3 8 874 3.0% 694P  
Vern Strom, Tamarack, MN

**1-800-ABS-STUD**

## PLAN NOW FOR FALL CROP

NATURAL GRAIN DRYING  
FLOORS  
WET TANKS  
FEED BINS  
AUGERS  
DRYING FANS AND HEATERS



IT'S YOUR BEST BUY



GET THE BEST FROM:



automatic farm systems  
608 Evergreen Rd., Lebanon, PA 17042  
(717) 274-5333

Check Our Low Prices Before You Buy

# PAUL B. Zimmerman INC.

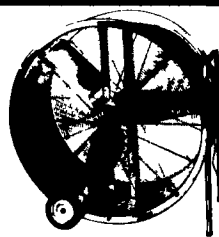
THE HOT SUMMER IS HERE!

## Dayton VENTILATING FANS

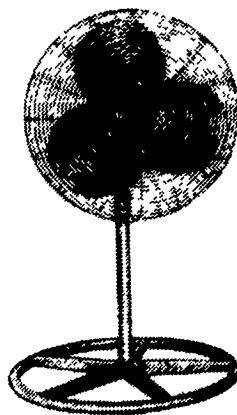
FOR FARM-HOME-INDUSTRY



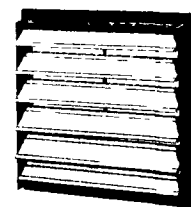
10% OFF  
ON ALL FARM & INDUSTRIAL  
FANS THROUGH JUNE



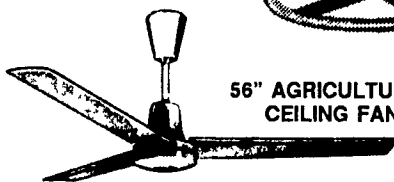
36" HIGH VOLUME DIRECT-DRIVE MOBILE CIRCULATOR



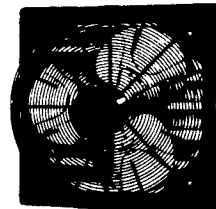
CIRCULATORS



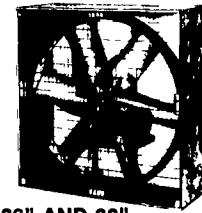
SINGLE AND DOUBLE PANEL SHUTTERS



56" AGRICULTURAL CEILING FAN



SHUTTER-MOUNTED EXHAUST FANS



36" AND 38" BELT DRIVE AND DIRECT DRIVE POULTRY FANS

# PAUL B. ZIMMERMAN, INC.

Hardware • Farm Supplies • Custom Manufacturing  
Crane Service

295 Woodcorner Rd., Lititz, Pa. 17543  
1 Mile West of Ephrata  
PHONE: 717-738-1121

WE SHIP UPS