

Charles, Howard Counties Dominate Md. 4-H Event

COLLEGE PARK, Md. — Separated by a 35-mile-wide Baltimore-Washington metropolitan corridor, Howard and Charles county residents can claim several things in common, including their time-honored interest in the Patuxent River.

This year, both counties also can claim youthful horse experts trained by a cadre of dedicated adult volunteer leaders for the 4-H horse program of the Cooperative Extension Service, University of Maryland System.

Charles County individuals and teams dominated the state 4-H horse judging contest held recently at the Carroll County Agricultural Center in Westminster. But Howard County youth starred in hippology, an event requiring total horsemanship knowledge and ability.

Teams from Charles County won all three age division championships in the 4-H horse judging

competition. And Charles County team members placed first or second in both reasons and total scores among individual contestants in all three age categories.

Howard County 4-H members matched that accomplishment with their strong showing in the hippology event, winning first or second in all three age categories. Three of the top four contestants in the intermediate bracket were from Howard County.

Top finishers in the state 4-H horse judging contest:

COUNTY TEAMS

Senior
1. Charles. 2. Carroll. 3. Baltimore.

Intermediate
1. Charles. 2. Carroll. 3. Queen Anne's.

Junior
1. Charles. 2. Harford. 3. Baltimore.

INDIVIDUAL CONTESTANTS (total scores)

Senior
1. Tori Currie, 15, of Bellewood (Charles County) 2. Alicia Wells, 14, of Sykesville (Carroll County) 3. Colleen Medford, 16, of Accokeek (Prince

George's County resident with Charles County 4-H affiliation).

Intermediate
1. Amanda Darlak, 13, of Bel Air Acres (Charles County) 2. Jessica Herbert, 11, of Mexico (Carroll County) 3. Heather Warner, 13, of Upper Crossroads (Harford County)

Junior
1. Jennifer Staub, 11, of Fairplay (Washington County). 2. Samantha Dietz, 10, of Madonna (Harford County). 3. Ellen Chapman, 10, of LaPlata (Charles County).

High Individuals in 4-H hippology competition were:

Senior
1. Bonnie Brown, 16, of Daisy (Howard County). 2. Julie Perkins, 15, of Bel Air (Harford County). 3. Stephanie Wilt, 17, of Hagerstown (Washington County).

Intermediate
1. Ellen Miller, 13, of Owen Brown Village in Columbia (Howard County). 2. Amanda Darlak, 13, of Bel Air Acres (Charles County). 3. Alison Mitchell, 13, of Kings Contrivance Village in Columbia (Howard County)

Junior
1. Ellen Chapman, 10, of LaPlata (Charles County). 2. Sarah Mesa, 10, of Kingston (Howard County). 3. Rhianna Lotfeldt, 10, of Hughesville (Charles County)

Charles County's winning senior horse judging team is now eligible to represent Maryland at the Eastern National 4-H Horse Roundup, scheduled Nov. 2-3 at Louisville, Ky., in conjunction with the North American International Livestock Exposition.

Four of the top five individuals in the statewide senior 4-H hippology contest also will represent Maryland at the Eastern National 4-H Horse Roundup.

Additional Maryland 4-H teams and individuals will compete at Louisville in horse bowl, public speaking, and demonstration events relating to horses. They will be selected during the annual 4-H Roundup on July 17 and 18 at the state fairground in Timonium.

and reduces amount of commercial fertilizer used (if cover crops are used for a length of time), but it also benefits the quality of our groundwater and helps reduce soil erosion when the ground is most susceptible to adverse weather conditions.

This is a cost share program by either the ACP program or the Chesapeake Bay Program, depending on which one you qualify for. Sign-ups will be taken by the Montour Conservation District. For more information, contact the Conservation District Office in the Community Services Building on Woodbine Lane in Danville, or call (717) 271-1140.

Montour Co. District Will Start Seeding Program

DANVILLE (Montour Co.) — The Montour County Conservation District in cooperation with ASCS is looking forward to starting an aerial seeding program this fall.

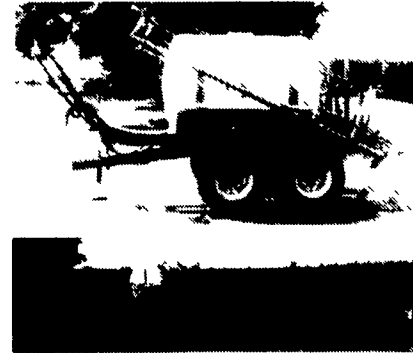
The program will consist of seeding small grains as a winter cover with special concern on corn silage ground because of little crop residue.

Cover crops tie up nitrates during the primary leaching period between fall harvest and spring planting. The small grains work as a sponge and store nitrogen for the next crop and hold it from polluting the groundwater. This practice not only benefits the quality of the soil, provides good weed control,



Your Complete Headquarters For Sprayers And Parts

HEAVY DUTY SPRAYERS BUILT STRONG TO PERFORM TOUGH



- 200, 300 & 500 Gal. Trailer Models
- 110, 150, 200 & 300 Gal. 3 Pt. Hitch Models

FEATURES AVAILABLE:

- 30', 35' and 40' Booms
- 30' & 45' All Hydraulic Folding Boom
- Quick Tejet No Drip Nozzles
- Independent Boom Suspension Eliminates All Boom Bouncing

At Last! A Reliable, New Stainless Steel **AG-CHEM FOAM MARKER** Reg. \$810.00 **SPECIAL \$780.00**

Each Foam Marker Contains:

- Mixing chamber for each boom.
- Electric harness for in-cab controls (on-off/left-right)
- Drop hoses for each boom
- Hose for boom lengths up to 47'.

The Ag-Chem foam marker offers you efficient operation with a 12 volt compressor that draws only 9 amps. Independent left and right boom markers can be controlled from the cab for on-the-go operation. That lets you operate either boom marker for precise, economical foam placement. And best of all the Ag-Chem Foam Marker produces a dense foam within seconds of agitation, and has a dependable output that can be adjusted for volume.

Use with the new 80-to-1™ high concentrate foam.



TERRA-TRONICS I Electronic Monitor Measures Working Acres And Ground Speed

- Easy-to see digital readout
- Easy-to-operate touch sensitive keys
- Operates with any field implement requiring acre measurement - pulled, mounted, or self propelled sprayers, combines etc



Reg. \$197.00 **SPECIAL \$169.00**

Handy Half Gallon AG FOAM

Reg. \$9.85 **SPECIAL \$8.90**

24000 CALIBRATION KIT

- TeeJet Calibration Calculator
- TeeJet Calibration Container
- TeeJet Tip Cleaning Brush
- Instruction Manual
- Cultural Spray Products Catalog
- TeeJet Nozzle Selection Guide

Reg. \$59.44 **SPECIAL \$53.50**

Self-Priming PACER PUMP: Centrifugal Pumps

- 'S' Series Pedestal Pump 1 1/2" or 2" Ports

Reg. \$125.00 **SPECIAL \$118.13**

- 3 HP 'S' Series 1 1/2" Or 2" Ports

Reg. \$209.00 **SPECIAL \$182.88**

- 5 HP 'S' Series 2" Ports

Reg. \$249.00 **SPECIAL \$217.88**

- 5 HP 'S' Series With I/C Briggs Engine 2" Ports

Reg. \$328.00 **SPECIAL \$287.00**

Full Line Of Hose And Couplings In Stock!

Features:

- Self priming to 20 feet
- Total heads to 120 feet
- Capabilities to 200 U.S. GPM
- Built in check valve
- Equipped with 1 1/2" or 2" female threaded connections, NPT

Raven Tough Polyethylene Tanks



- SPRAYER TANKS - ALL SIZES For New Or Replacement AVAILABLE FROM
- STATIONARY TANKS - For Liquid Fertilizer Storage 25 GAL. to 2500 GAL.

AGRO METER

- Measure Speed, Area, And Distance
- Calculate "On The Go" Pressure Changes
- Large LED Display

SPECIAL \$145.00



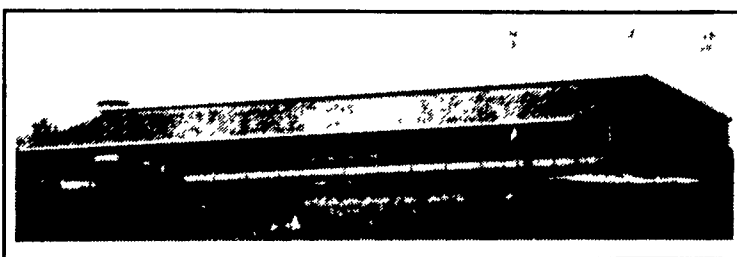
We Also Stock A Complete Line Of:

Tejet
Sprayer Nozzles And Accessories

Hypro
Pumps And Accessories

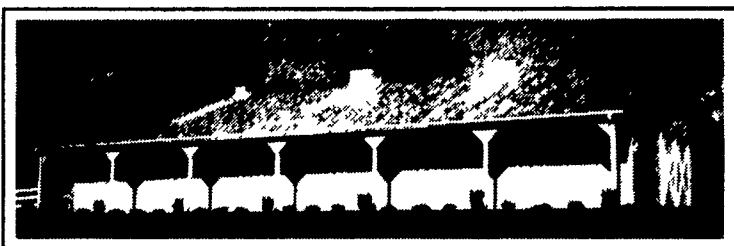
- Sprayer Hose
- Ball Valves
- Nylon Fittings
- Poly Tanks

AGRI-INC. Custom Built Farm Buildings Designed To Your Needs



BEEF BARN WITH TOTAL SLAT SYSTEM

HORSE STALL BARN



Let Our Experience Work For You -

- Dairy Complexes And Replacement Stock Facilities
- Horse Stall Barns And Riding Arenas
- Workshop And Machinery Storage Buildings
- Timber Column Buildings For Light Commercial



AGRI-INC. The Construction Professionals

R D 4, Ephrata, PA 17522 • (717) 354-4271

Serving The Agricultural Industry For Over 20 Years



PAUL B. ZIMMERMAN, INC.
1 Mile West of Ephrata
295 Woodcorner Rd. Lititz, PA 17543
(717) 738-1121

HOURS:
Mon Thrus Fri 7-8:30
Tues, Wed 7-5:30
Sat 7-4:00

• HARDWARE • FARM SUPPLIES • CUSTOM MANUFACTURING • CRANE SERVICE