

LARGE TWO DAY SALE OF FARM EQUIP., ETC.

at our place of business located six miles south of Chambersburg, Pa., one mile east of Marion, just east off Rte. 81 "Exit 4" along Rte. 914 on

Thursday, June 20, 1991

Friday, June 21, 1991

Sales at 9:00 A.M. Each Day

Selling on Thursday

Lawn and garden tractors, chain saws and usual run of misc. items of all kinds.

Selling on Friday

Tractors of various make and model, some with loaders; skid loaders; trucks; trailers; farm equip. of all kinds inc. hay machines; pickers; harvesters; blowers; combines; spreaders; drills; planters; plows; packers; disk harrows; forage and hay wagons; new and used rotary mowers. Post diggers; blades; tires; etc.

Attention Farmers and Dealers - Bring in your equip. for this sale. No junk lots or worn out tires accepted. Please limit small items. Next sale August 1 - 2. Not responsible for condition of equip. sold or for prices obtained. No equip. with liens accepted unless notified in advance.

Open Daily 8 A.M. to 5 P.M. Closed on Saturday except Saturday before and Saturday after sale until 3 P.M.

Terms: Cash or Good Check. Ident. required.

RALPH W. HORST, Manager

License No. AU-000-437L

Marion, PA 17235 Phone 717-375-2824
Rentzel, Bohrer, Wolgemuth, Harry, Upperman, Gossert, Auctioneers



PUBLIC AUCTION

Farm Implements, Tractors, Antique Cars, Corner Cupboard, Furniture, Antiques, Household Goods, Hand & Garden Tools
Saturday, June 29, 1991
9 A.M.

Antique Cars - 1 P.M.

1125 Beaver Valley Pike, Lancaster, PA. From Lancaster take Rt. 222 South approx. 3 miles from Willow Valley, just beyond Penn Grant Road.

Sale for:

ELSIE M. HERR

MRS. WILLIS G. HERR

Miller & Siegrist Auctioneers
687-6857 AU-1723L

PUBLIC AUCTION

SAT., JUNE 22 - 9 AM

REAL ESTATE (12 NOON) AND
HOUSEHOLD GOODS

ECHO SPRINGS FARMETTE

APPROX. 7.6 ACRE FARMETTE NESTLED IN THE SOUTH MOUNTAIN JUST 2 MILES SOUTH OF ROBESONIA (HEIDELBERG TWP.). STONE AND FRAME HOUSE WITH KITCHEN, DINING AND FAMILY ROOM/ COMBINATION W/FIREPLACE, 3 BEDROOM, 1 AND 1/2 BATHS, LAUNDRY ROOM, LIVING ROOM AND DEN, CEDAR LINED WALK-IN CLOSET. OIL HOT WATER HEAT; WRAP AROUND PORCH ARCHED ROOT CELLAR; SITUATED NEAR A SPRING AND STREAM WITH MATURE TREES. SMALL BARN AND LEAN TO W/3 HORSE STALLS AND SHEDS

BUNGALOW ONE BEDROOM RENTAL UNIT ON PROPERTY FOR ADDITIONAL INCOME.

SHOWN BY APPOINTMENT

CALL 215-488-7372 OR 717-533-4267

TERMS - 10% DOWN DAY OF AUCTION

BALANCE IN 60 DAYS

SMALL YORK SAFE (E.Z. RUTH MD), CEDAR WARDROBE, G.E. S/S REFRIGERATOR, MAYTAG WASHER; HOT POINT DRYER; 2 CHERRY SINGLE POSTER BEDS; SINGLE MATTRESS AND BOX SPRINGS; WHITE SEWING MACHINE; WOOD FRAME SOFA AND CHAIR; PATIO TABLE; G.E. PORTABLE DISHWASHER; DEHUMIDIFIER, WOODEN VICTORIAN TABLE; BALL AND CLAW PARLOR TABLE; MISC PLANK BOTTOM CHAIRS; BOOT/JACK ROCKING CHAIR, WOODEN CLOTHES TREE; MORRIS CHAIR AIR CONDITIONER; METAL WARDROBE; 5 HP TORO LAWN VACUUM/BLOWER; 8HP SNAPPER RIDING LAWN MOWER; BUTCHER KETTLE; SM IRON TROUGHS; 30 IN. JARI SICKLE MOWER, B & D HEDGE TRIMMER; LG. SPLINT OAK BASKET, DECORATED CROCK; MILK CAN; READING RR LANTERN; 2 DR. FILE CABINET; YELLOWWARE MIXING BOWLS; LIMOGUE HAND PAINTED FISH PLATTER SETS (2); MANY OLD PICTURES AND FRAMES, CANE SEAT CHAIR; KING BAMBOO FISHING ROD, FISHING REELS; BLACK SHAWL; OLD BLANKET CHEST; BUGGY ROBE; GERMAN MANTEL CLOCK W/ CHIMES; BEAM BOTTLES; 1919 MEMORIAL ENCY. OF PENNA. BOOKS; WOODEN BOOT JACK; ELECTRIC HEATERS; NIPPON VASE; LIQUOR CABINET, ROYAL DOULTON 9" (THE JESTER); NORMANDY TABLE RADIO; COLOR CONSOLE QUASAR TV; ELECTRIC CANDELABRA W/ GLASS PRISMS; DRESSING TABLE AND CHAIR; FANS; PICNIC TABLE SET; BUGGY HARNESS; AMANA RADAR RANGE MICROWAVE; WOODEN TOY BOX; RECLINER; POTS AND PANS; KITCHEN ITEMS; EUREKA AND G.E. VACUUM CLEANERS; PLUS MUCH MORE!

DIRECTIONS — RT. 422 IN ROBESONIA; SOUTH ON CHURCH ST. .8 MILE TO STOP SIGN; RIGHT ON FURNACE RD. .9 MILE TO HILL RD 2 MILE TO PROPERTY.

CONDITIONS BY

GEORGE M. RUTH

JOHN E. RUTH

MILDRED W. RUTH

ZIEGLER AUCTION COMPANY
JESSE D. ZIEGLER LIC. #AU2771-L
JAY E. ZIEGLER LIC. #AU2120-L
"FOOD AVAILABLE"

Public Auction Register

Closing Date Monday 5:00 P.M.
of each week's publication

JUNE

SAT JUNE 15, Ephrata Mennonite School Benefit Auction, Ephrata, PA, Local Auctioneers.

SAT. JUN 15 - 8AM, Antique Blacksmith, Carpenter, Tinsmith and Other Related Items, located 2801 Ridge Rd., Rt 563, Perkasio, PA, Conrad Kraulle, owner, Ralph D Freed, Auct

SAT JUN. 15 - 9AM, RE, Personal Property, Antiques HH Goods, '68 Mustang Convertible, Shop Equip & Tools, located 591 E. Main St, New Holland, PA, Kurtz E Reeser, owner, Miller and Siegrist, Aucts

SAT JUN. 15 - 9AM, 10 Plus Acres Open & Wooded Land, Backhoe,

Tractors, Compressors, etc., located 1 mi. E of Rt 125 in Mahantongo Valley, Western Schuylkill Co., PA, Christian Benner, owner, Mike and George Deibert, Aucts

SAT JUN 15 - Show 9AM-5PM, Sale 5PM Sharp! Baseball Card Show & Auction, Whiteside Auction Service, Aucts

SAT JUN 15 - 9AM, Body Shop Equip, Tools, Elcamino, Old Car Parts, located Grantham, PA, 627 Grantham Rd off Rt 15, 3 mi N of Dillsburg, PA, Romaine Reeser, owner, Rentzel's Auction Service, Aucts

SAT. JUN 15 - 9AM, Surplus Building Materials, at The Lumber Yard of Hershey, 265 W Chocolate Ave, Hershey, PA, The Lumber Yard of Hershey, owner, Bob Rath, Auct

SAT. JUN 15 - 9AM, RE-13+/- Acre Farmette-4 Bdr Frame Home, Barn, located 666 S 14th St, Lebanon, PA, Mrs Elberta Lamm, owner, Reist Auctioneers

SAT. JUN 15 - 9AM, Antiques, Collectibles, HH, located 230 N 5th St, Sunbury, PA, Triangle Auto Sales Bldg, Atwood Ross, owner, Mark J Jones, Auct

SAT JUN 15 - 9AM, 1952 & 1953 Kaiser Cars, HH, Antiques, 20's Bedrm, Dry Sink, Trains/RR Items, Farm Equip, Tools, AC Mod B Tractor and 10 HP Riding Mower, located 2 mi N of Tamaqua, 8 mi S of Hazleton, 1/2 mi S of Village of Still Creek, just off Rt 309, George and Joan Gernavage, owners, Houser Aucts

SAT JUN 15 - 9AM, Unreserved Public Auction of the Important Private Collection of 18th, 19th & Early 20th Century American German Language Imprints of Donald R Hinks at Horst Auction Center corner of Rt 322 and Durlach Rd W of Ephrata, PA, Mr Donald R Hinks, owner, T Glenn Horst and Sons, Aucts

SAT JUN 15 - 9AM, Antiques, at Kleinfelters Auction Room, 105 Chapel St Lebanon, PA, Collection of Mrs Henry E Juhrs Helen Ward, Amanda Zartman and Charles Page, owners Kleinfelters Auctions

SAT JUN 15 - 9AM, Mechanic Hand & Floor Model Tools, MF 50A Diesel Tractor Backhoe Unit Ford 8N Tractor Railroad Antiques, Tools located on site formerly truck garage, 6 mi W of Lancaster City, PA on Donerville Rd, 1/2 mi S of Rt 30 Exit, at Centerville Rd go S 1st light right to Donerville Rd left James G Greenawalt, Sr, owner Steve and Steve, Jr Peter sheim, Aucts

SAT JUN 15 - 9AM, Wedgwood Jasperware Collection, Vases, Urns Plates, etc, located PA Turnpike Exit 13, Rt 522 N to Orbisonia, turn W on Rt 994 & follow signs, Robert C and Betty Schock, owners, Steven C Price-Hill Valley Auction, Aucts

SAT JUN 15 - 9AM, Ephrata Mennonite School 7th Annual Benefit Auction, located take Rt 272 N from Ephrata to Schoeneck Rd, take Schoeneck Rd approx 1/2 mi to school on left, Ephrata Twp Lanc Co, PA, Local Auctioneers

SAT JUNE 15 9 30AM Real Estate, HH Good Truck Tractor w/Loader located 1 mi S of Reamstown on Church St turn E on Red Run 1/10 mi to 1305 Red Run Rd E Cocalico Twp Lanc Co PA Lloyd & Elma Diem owners, Robert E. and Jeffrey R Martin Aucts

SAT JUN 15 9 30AM Equipment and Vehicles located Edison NY Public Service Elec & Gas owners, Vilsmeier Auction Co Inc Aucts

"HORST AUCTION CENTER" PUBLIC SALE OF ANTIQUES & HOUSEHOLD GOODS WED., JUNE 19, 1991 AT 3:30 P.M.

Sale to be held at the Horst Auction Center, located at the corner of Rt 322 & Durlach Rd (approx 2 miles West of Ephrata), Ephrata, Lanc Co, PA

FURNITURE

Fine Pecan Dining Room Suite, Mahogany Dining Room Suite, OAK: Washstand, Chest of Drawers, Pressed Back Chair, Modern Dining Room Suite, Bedroom Suites, Cedar Chest, Game Table, Living Room Suite (King Hide-A-Bed), China Closet

APPLIANCES: Refrigerator, Automatic Washer & Dryer, Color TV, Electrolux, Prints & Frames, Mantel Clock

CHINA & GLASSWARE

Transfer China; Adams Toddy Plates, Fruit & Flower Bowls; Hummel Items - Plates, Figurine, Berta Hummel Plates; Pressed & Pattern Glass; Steins; Redware; Sperry New Holland Items; Demijohn, METAL: WAPAK WAFFLE IRON w/INDIAN, Banks, Tinware, Tea Kettle; Advertising Boxes.

LINENS: Lone Star Quilt; Braided Rug, DAIRY BOTTLES; Collection of Pocketknives

TOOLS: Machinist Tools & Box

GUNS: J.T. Randall Hammer Gun, 22 Cracks-hot; Daisy B.B.; Pistol; Bayonette

No out-of-state checks unless accompanied by a current bank letter or previous arrangement w/ auction service.

Sale For

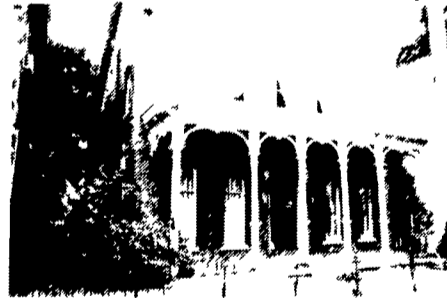
LAURA GROFF

HORST AUCTS.

T. Glenn AU438L
Timothy G. 717-859-1331 — 717-738-1245
Thomas A. VOICES OF EXPERIENCE

REAL ESTATE AUCTION & RESTAURANT EQUIPMENT

Well Known Landmark in Lancaster County



"GALLERY RESTAURANT"

20 W. Main Street, Ephrata, PA

SATURDAY, JULY 13th

At 10:00 A.M. Real Estate 11:00 A.M.

Enter through the large double doors of this unique property and you will be taking a stroll back into history. Observe the priceless Tiger Maple Balustrade stairs and hall, the large windows, the manually operated dumb-waiter with original cabinetry, comb grained woodwork in the dining room.

Here is a rare opportunity to purchase a turn key operation business. You can truly buy this property and open the next day. This lovely circa 1885 Victorian home consists of three kitchens, seven dining rooms, lighted, landscaped deck, his and hers bathrooms, two story restored frame barn. All located in growing Northern Lancaster County.

RESTAURANT EQUIPMENT: Includes Stoves, stainless steel refrigerators and freezers, stainless steel pots and pans and other cooking supplies, meat slicers, blenders, mixers, tables, chairs, linens, shelving, plates, water glasses, plus much, much more. For full listing of Real Estate and Restaurant Equipment, please call or write to Fortna's Auction Company

OFFERS BEING ACCEPTED On real estate with restaurant equipment only as an entirety

Deadline for offers July 6, 1991

INSPECTION Sunday, June 23 from 2-4 p.m. Monday, June 24 from 10-12 a.m.

TERMS: 15% deposit at auction by cash or check. Settlement within 60 days.

"Broker Participation Invited"



FORTNA'S

Auctioneers & Galler

18 E Main Street, Annville, PA 17003 • Phone 717-867-4451
Michael R Fortna CAI Auctioneer Lic No 0017111

PUBLIC AUCTION

ESTATE OF EDWARD EVANS,

Sale on farm located at Cheswold, Delaware. Location: 4 miles North of Dover, Rt. 13 & 42 (Bishop's Corner) head west for 1 mile to Cheswold over RR crossing, immediate left to first farm on right.

SALE DATE

MONDAY, JUNE 17, 1991

At 10:00 A.M.

MUSEUM ANTIQUE FARM TRACTORS: 1919 Moline, GP John DEERE, 1914 Titan 10-20, 1924 Cross Motor Case, Twin City, 1958 Porsche, 1930 Massey Harris 4WD, Huber Wheat Thresher, Frick Steam Engine, Keystone (The above at the DELAWARE AGRICULTURE MUSEUM).

ANTIQU FARM TRACTORS (at Farm): 1929 Huber, Huber Super 4, Silver King Utility, Case R, (Two) Hart Parris 1828, Allis Chalmers (standard), Economy, Fordson, Cross Motor Case, John Deere B, 10-20 McCormick Deering, John Deere D, F-14 McCormick Deering

ANTIQU ENGINES: F-M gas 1 1/2 H, Witte gas 1 1/2 H, McCormick Deering 1 1/2 & 3 H, Stover 1 1/2 H, Novo 1 1/2 H, Matag, Small, Power Products, Fairbanks Morse 1 1/2 H, Fuller Johnson & Pump, Briggs-Stratton, John Deere 1 1/2 H, Single cylinder, FM 6Hp, Munne, Bean gas, Alamo Blue 3 1/2 H, Economy, 4 cyclone Wisconsin, Delco power unit, Ant. Int. garden tractor & atch

MISC. ANTIQU ITEMS: 1927 MODEL T FORD TOURING CAR, Upright steam engine, Ant. toy tractor, Model A & Model T parts, Ant. racing boat, Pedal lathe, Maytag washer & motor, Penn RR Locomotive Bell, saw bench, steam pump, chair lift 2 Box. plows, etc.

ACTIVE FARM EQUIPMENT: Two Case 930 Comfort King Tractors, Int. 504 gas tractor, Massey Ferguson 165 Tractor, D-6 Caterpillar, New Idea S-P compicker Uni-System, 14' Brillion packer, post hole digger, side rake, feed wagon, 5 bot plows, NH flail chopper, 4 wagons (flat & grain), Spring tooth harrows, Ford mower, Hyd. dump for truck, elevator, JD 2R planter, NH round baler, '61 GMC grain truck, cultivators, and much more.

NON-FARM ITEMS & SHOP EQUIPMENT: BMW Motorcycle 4/90-6, Vespa Moped, 2 Bicycles, pulleys & axles, 24" planer, 18" joiner, Bridgeport upright Milling Machine, Horizontal milling Machine, Long Bed metal lathe, water pump, airplane parts, boat & motor, Ant jacks, Kohler power plant, Porta power, Skil saw, jig, grinder, Roto hammer, cream separator, 1/2 scale CASE STEAM ENGINE, Oilers, pipe threader and more

INSPECTION: SAT. & SUN. JUNE 15 & 16 from 10 am to 3 pm.

SELLING ORDER: Shop equip, Non-farm items, Active farm equip, Antique items & engines, Antique farm tractors, Museum Antique farm tractors.

HARRY RUDNICK & SONS, INC.

Sales Manager, Auctioneers, Real Estate Broker
Galena, MD 21635 Phone: 301-648-5601