

New England Shell Eggs

Edison, NJ.

Wednesday, June 12, 1991

NEW ENGLAND: Prices were unchanged. Trade sentiment was generally steady. Demand was irregular, mostly moderate. Supplies were generally adequate.

PRICES PAID TO PRODUCERS, CASES EXCHANGED, GRADE YIELD BASIS, BROWN EGGS LOOSE, AT FARM, CENTS PER DOZEN RANGE JUMBO 64-67; EXTRA LARGE 63-66, LARGE 61-64, MEDIUM 37-40, SMALL 21-24.

BOSTON: PRICES TO RETAILERS, SALES TO VOLUME BUYERS, USDA GRADE A AND GRADE A, BROWN EGGS IN CARTONS, DELIVERED STORE DOOR, CENTS PER DOZEN RANGE EXTRA LARGE .82-.84, LARGE 80-.82, MEDIUM .56-.60.

Northeast Chicken Parts

Edison, NJ.

Wednesday, June 12, 1991

NORTHEAST BROILER/FRYER PARTS. FEDERAL-STATE: Trucklot buying interest was good on tight supplies of wings; limited on other items. Boneless skinless breasts were adequate to occasionally fully adequate and clearances were generally noted at steady price levels. Whole breasts increased in availability and fairly active trading was noted at lower price levels. Legs and thighs were fully adequate. Leg quarters and drums were adequate and in closest balance of leg items. Wings were in seasonal demand and where available held with confidence.

TODAY'S NEGOTIATED SALES AS OF 11:30 A.M., 12-JUN-91 PRICES PAID PER POUND, ICE PACKED PARTS DELIVERED IN POOL TRUCKLOT AND TRUCKLOT QUANTITIES ITEM CURRENT NEGOTIATED TRADING BREAST - BONELESS SKINLESS 200 BREAST - WITH RIBS 94-95 BREAST - LINE RUN 94 LEGS 37-38 LEG QUARTERS 29 THIGHS 37-38 DRUMSTICKS 33. WINGS 50-51 BACKS AND NECKS (STRIPPED) 10-12 LIVERS 15-20 GIZZARDS (HEARTS) 30.

Includes New York City Metropolitan area, Northern New Jersey, Massachusetts, Connecticut and Rhode Island.

Heinsey's Poultry

Roots, East Petersburg

Tuesday, June 11, 1991

Muscovy Ducks - Drakes .84 - 1.02.
Muscovy Ducks - Hens .90 - 1.08.
Pekin Ducks .30 - .42.
Pullets 5-7 .30 - .42.
Red Fowl 4-4.5 .30 - .52.
Red Fowl 5-6 .60 - .74.
Crossbred Roosters 4-6 .30 - .62.
Crossbred Roosters 7-11 .24 - .64.
Crossbred Fowl 5-9 .20 - .42.
Banty Roosters 2.50 - 4.50 ea
Banty Hens 1.50 - 2.50 ea.
Guinea Pigs .50 - 1.00 ea.
Guinea Fowl 1.35 - 1.65.
Kid Goats 23.00 - 28.00 ea.
Geese 8-12 .30 - .44.
Pigeons 1.75 - 2.25 ea.
White Pigeons 2.25 - 2.75 ea
Rabbits 4-6 .50 - .78, Rabbits 7-11 40-.68.
Leghorn Hens 05 - 12
Bunnies 25 - 1.00 ea.
Doves 1.50 - 4.25 ea
Silkies 4.50 - 6.00 ea
Total Coops Sold 1226

National Grain Market

St. Joseph, Mo.

Wednesday, June 12, 1991

USDA DAILY NATIONAL GRAIN MARKET SUMMARY TUESDAY'S CREDIT AND PRODUCTION NEWS RELEASES A SHOT IN THE ARM FOR WEDNESDAY'S GRAIN TRADE. WHEAT 1 TO 4 CENTS HIGHER, CORN 1-3 CENTS HIGHER, SORGHUM 2-7 CENTS HIGHER AND SOYBEANS STEADY TO 1 CENT LOWER. U.S.S.R. GRANTED CREDIT TO BUY U.S. GRAINS AND USDA REPORT ESTIMATING SHARP DECLINE IN WHEAT PRODUCTION OPENED THE FUTURES TRADE WITH A BANG BUT PROFIT TAKING SET IN BY THE CLOSE U.S.S.R. GRANTED 15 MILLION DOLLARS CREDIT TO PURCHASE U.S. AGRICULTURAL PRODUCTS WILL BE ALLOCATED IN THREE SEPARATE PACKAGES OVER THE NEXT NINE MONTHS THE WHITE HOUSE ANNOUNCED. REDUCED WHEAT ACERAGES AS USDA INCREASED SET ASIDES LAST FALL REDUCED YIELDS DUE TO

TOO MUCH RAIN, DISEASE AND DELAYED HARVEST.

EXPORT NEWS: ZAIRE PURCHASED 19,000 TONNES OF NO. 2 OR BETTER HARD RED WINTER WHEAT FOR JUNE-JULY DELIVERY UNDER PL480 FINANCING.

TODAY CHANGE YEAR AGO 06/12/91 06/11/91 06/13/90 WHEAT: KANSAS CITY 3.01-3.02 UP 3-1 3.57-3.60 MINNEAPOLIS 3.08 1/4-3.13 1/4 UP 3 1/2-5 1/2 3.92 3/4-4.06 3/4 PORTLAND 3.50-3.51 UP 4 3.57-3.58 ST. LOUIS 3.05-3.08 UP 4-2 3 2.5-3.28.

CORN, U.S. NO. 2 YELLOW: KANSAS CITY 2.44-2.47 UP 2 2.84-2.87 MINNEAPOLIS 2.36 3/4 UP 1 2.78 1/4 SO. IOWA 2.42-2.45 UP 3 2.82-2.86 OMAHA 2.29-2.31 UP 1-3 2.71-2.73.

SOYBEANS, NO. 1 YELLOW: KANSAS CITY 5.82-5.85 UP 1 6.08-6.14 MINNEAPOLIS 5.76 1/3 DN 1 3/4 5.93 SO. IOWA 5.80-5.84 NC-DN 1/2 5.97-6.02 C. ILL. PROCESSORS 5.85 1/2-5.90 1/2 NC 6.08-6.15.

*KANSAS CITY, US NO. 1 HARD RED WINTER WHEAT, ORDINARY PROTEIN. MINNEAPOLIS, US NO. 1 DARK NORTHERN SPRING WHEAT, 14% PROTEIN. PORTLAND, NO. 1 SOFT WHITE WHEAT, ST. LOUIS, NO. 2 SOFT RED WINTER WHEAT.

FUTURES CLOSE: KANSAS CITY (JULY) WHEAT 2.94 UP 3 1/4 3.32 1/4 MINNEAPOLIS (JULY) WHEAT 2.88

1/4 UP 3 1/2 3.46 3/4 CHICAGO (JULY) WHEAT 3.01 1/2 UP 3 3.34 1/4 (JULY) CORN 2.38 3/4 UP 2 2.90 (JULY) SOYBEANS 5.73 1/2 UP 1/4 6.06.

EXPORT: BARGE OR RAIL, PORT OF NEW ORLEANS OR NORTH TEXAS GULF. NO. 1 HARD RED WINTER WHEAT ORDINARY PROTEIN 3.33 UP 4 3.66-3.70 NO. 2 SOFT RED WINTER WHEAT 3.43-3.44 UP 6-4 3.53-3.56 NO.2 YELLOW CORN 2.62-2.63 UP 4-5 3.08-3.09 NO.2 YELLOW SORGHUM RAIL 4.41 UP 4 BARGE 4.48 UP 7 5.02-5.11 NO.2 YELLOW SOYBEANS 6.04-6.07 NC-UP 1 6.24-6.27.

Grantsville Livestock

Grantsville, Maryland

Sat., June 8, 1991

HOGS: TOP BARROWS & GILTS 51.50-54.00, HEAVY BUTCHER 50.50-52.00, LIGHT BUTCHER 42.00-50.00, BUTCHER SOWS 30.00-42.50, FEEDER SHOATS 20.00-55.00.

VEAL: GOOD 100.00-120.00, STANDARD 70.00-80.00, UTILITY 40.00-60.00, BULL CALVES 120.00-180.00.

SHEEP & LAMBS: GOOD 50.00-57.00, UTILITY 42.00-48.00; SLAUGHTER EWES 12.00-18.00. SLAUGHTER CATTLE: STEERS:

GOOD 70.00-74.00, STANDARD 65.00-68.50, UTILITY 60.00-63.50. HEIFERS: GOOD 68.50-70.00, STANDARD 62.00-65.00, UTILITY 50.00-58.50.

COWS: COMMERCIAL 45.00-54.00, UTILITY 42.00-44.00, CANNER AND CUTTER 40.00 & DOWN.

BULLS: COMM. & GOOD 60.00-68.50, CUTTER AND UTILITY 52.00-58.00.

STOCK-FEEDER CATTLE: GOOD 80.00-95.00, MEDIUM 65.00-75.00.

Isennock Auction

New Park, PA

Monday, June 10, 1991

Report supplied by auction

SLAUGHTER COWS: FEW 54.50 & DOWN.

VEAL CALVES: (MOST RETURNED TO FARM) 175-195 LBS. 76.00-98.00, 120-140 LBS. 146.00-185.00; 100-115 LBS. 167.00-188.00; 90-95 LBS. 120.00-186.00; 65-85 LBS. 100.00-157.00.

FEEDER CATTLE: STEERS 110-250 LBS. UP TO 116.00; HOLSTEINS 170-210 LBS. UP TO 88.00. HEIFERS 445-475 LBS. 68.00-72.00; FED STEERS 960-1285 LBS. 68.00-73.00; BULLS 1 AT 1500 LBS. 65.00; SOWS 395-550 LBS. 45.00 & DOWN; HEAVY HOGS 265-290 LBS. 41.50-43.00; LIGHT HOGS 55.50 & DOWN; FEEDER PIGS 40-60 LBS. AVG. 34.00-37.00 HD. GOATS 26.00-44.00 HD.

FOR SALE SHAVINGS & SAW DUST

★ Delivered To Your Location

★ Year Round Supply

★ Excellent for Dairy or Horses

Call For Price To Your Area

717-653-5935

J.D. Martin inc.

Mt. Joy, PA



Every Wednesday At 11:00 A.M.

GOOD'S AUCTION

111 Maple Ave. Leola, PA 17540 717-656-8911 717-656-9554

12 SPRINGING HEIFERS

From Lebanon County Herd Sell Wed., June 19, 1991 See Complete Details Page B46

NEW HOLLAND SALES STABLES INC. THE ACTION AUCTION

HORSE SALE

Fri., July 19 - 7:00 P.M. Tack 6 P.M. Horses Hitched 12 Noon

LIVESTOCK IS OUR ONLY BUSINESS

MONDAY

SLAUGHTER HOGS



EARLY BIRD HOG SALE 8:00 A.M.

Sell Your Hogs At New Holland Sales Stables, Inc. See them weighed, sold and pickup your check.

10:00 AM

HORSES MULES



1:30 PM

BEEF SALE

SHEEP GOATS



CALVES

WEDNESDAY

HEIFER SALE 11:00 AM

COW SALE 12:00 NOON

HEIFERS BULLS



COWS

We have the usual run of 50 to 100 Heifers, all ages. Loads of fresh cows and springers from our regular shippers. Also some local fresh cows and springers.

1:30 P.M.

FEEDER PIG SALE

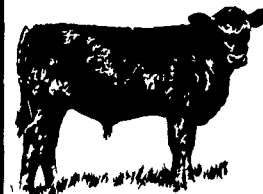


Pigs are accepted after 6:30 A.M. State graded from 8 to 12 Dairy Barn and Feeder Pig Barn are cleaned and disinfected weekly for your protection.

THURSDAY

Beef Auction 10:00 A.M.

BULLS STEERS BEEF COWS



1:00 P.M. STOCKERS & FEEDERS

12:30 P.M.

SHEEP GOATS CALVES



NEW HOLLAND SALES STABLES, INC.

12 Miles East of Lancaster Off Route 23, New Holland, Penna.

MANAGERS

Norman & David Kolb - 717-397-5538

Field Representatives

Luke Eberly - 215-267-6608 738-1865
Homer Eberly - 215-267-3047
Ron Ranck - 717-656-9849

Sale Barn Office Manager Roger Floyd - 717-354-4341 FAX # 717-355-0706

Order Buyer Paul Good - 215-445-6662