

Lancaster Co. DHIA

(Continued from Page C10)

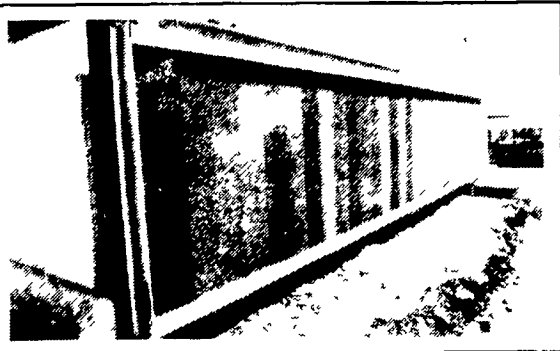
New Acres 22	GrH	4-10	305	22,517	3.2	730	3.9	892
R. Edwin Harnish Ginny	RH	3-3	305	22,952	3.1	729	3.5	814
Rick & Mim Brenneman Amanda 2	RH	6-1	305	22,374	3.2	726	4.0	905
Noah N. Martin 23	GrH	6-1	305	24,007	3.0	725	3.0	737
Shadytop Farm Arlinda	RH	4-11	305	23,526	3.0	725	3.2	774
Marvin Z. Weaver 34	RH	3-4	305	23,347	3.1	725	3.6	859
25	RH	4-0	305	21,286	3.2	687	3.4	732
Martin Nolt & Sons 65	RH	6-3	305	24,758	2.9	724	3.7	927
Norman B. Rutt - Son 21	GrH	7-10	284	23,162	3.1	724	3.0	715
Earl S. Weaver Lyn	RH	3-5	305	21,937	3.3	724	4.5	996
Marvin J. Zook Pebbles	RH	3-9	305	25,283	2.8	723	3.2	823
Marvin K. Witmer Marlu	RH	3-1	305	22,173	3.2	721	3.3	749
Bobbi	RH	5-4	305	20,715	3.3	693	4.2	889
Curtis E. Akers Tinker	RH	5-1	305	24,109	2.9	720	3.8	916
Nelson H. Wenger Becky	RH	3-8	305	24,666	2.9	718	3.9	966
Log House Farm Sybil	GrH	5-1	305	23,896	3.0	718	3.9	937
A. Dale Herr 67	GrH	5-11	300	23,142	3.1	718	4.0	937
S&A Kreider & Sons 275	GrH	5-5	305	22,961	3.1	716	4.1	945
177	RH	3-0	299	22,214	3.1	697	2.6	585
185	RH	4-2	305	19,676	3.4	683	3.9	772
Paul S. Sauder Mav 210	RH	4-11	305	24,379	2.9	717	3.4	840
Aaron R. Zeiset 51	RH	5-11	250	21,642	3.3	717	3.6	797
53	RH	6-3	305	22,778	3.0	703	3.4	794
Rodney Denlinger Jennifer	RH	6-10	305	23,721	3.0	715	3.5	833
Lynn M. Good Gem	RH	4-11	305	23,472	3.0	715	3.6	863
Richard N. Sauder Pamela	RH	2-0	305	22,547	3.1	714	3.7	837
Franklin View Farms 155	GrH	4-7	305	22,635	3.1	713	3.1	710
157	GrH	4-8	305	20,948	3.3	701	4.1	863
Christ S. Fisher Denise	RH	6-10	305	20,253	3.5	712	3.8	776
Abner S. Esh Beauty	RH	1-10	305	24,234	2.9	711	3.0	741
Windy	RH	4-7	305	21,391	3.2	687	3.5	765
Harry L. Troop Pansy	RH	3-5	288	23,616	3.0	710	3.0	708
J. Ray Ranck Val	GrH	3-0	305	22,191	3.2	710	3.2	730
Dale Weiler Nellie	RH	3-6	305	22,937	3.0	709	3.9	910
John & Barb Brubaker Sally	RH	4-3	305	24,150	2.9	708	3.6	871
Leonard H. Martin Tessie	GrH	3-4	305	23,563	3.0	708	2.8	675

J. S. Smucker & Sons Farm #2 849	RH	3-0	305	22,926	3.0	707	2.8	646
649	RH	6-5	305	26,020	2.6	690	3.3	869
Welsh-Vista Farms 14	RH	4-4	305	21,673	3.2	707	3.9	848
Burnell W. Nolt 134	RH	3-6	305	21,095	3.3	706	3.4	722
Homer G. Hess Beula	GrH	3-1	276	23,333	3.0	705	3.1	731
Aaron Z. Martin 107	RH	6-6	305	22,779	3.0	705	4.1	945
91	RH	3-8	305	22,394	3.1	695	3.9	885
Pequea Meadows Farm 143BST	RH	3-0	305	22,130	3.1	705	2.6	578
Samuel E. Beiler Abbey	RH	3-6	305	24,217	2.9	703	3.3	812
Daniel B. Landis 635R	RH	6-8	305	22,237	3.1	703	3.3	742
Mar-Vil Acres Farm 10	GrH	3-2	305	23,361	3.0	702	3.2	757
Paul M. Fahnestock 88	GrH	3-8	305	24,026	2.9	700	3.4	823
Karl W. Herr Holstein Sharon	RH	3-0	305	23,810	2.9	700	3.5	841
John Z. Esh Beulah	GrH	2-11	305	22,062	3.1	699	3.2	712
Meadow Vista Farm 729	RH	5-0	305	24,572	2.8	697	3.4	850
Clay Farm Blossom	RH	4-2	305	22,368	3.1	696	3.4	774
Wilmer L. Shertzer 30	GrH	3-4	305	21,872	3.1	694	2.9	705
John J. Speicher 36	GrH	4-9	305	22,282	3.1	693	3.9	889
Amos E. King Jr. Sara	RH	5-4	305	24,169	2.8	692	3.2	794
Swamp Meadow Farm Maple	GrH	6-11	305	23,318	2.9	692	3.3	790
John K. Peters Mattie	RH	4-8	305	20,464	3.3	692	4.0	820
Tom Zartman 291	GrH	3-3	305	22,136	3.1	691	3.7	818
Riehlee Farm Jane	RH	4-8	305	20,592	3.3	691	4.3	892
Maplebrink Farm 66	GrH	2-3	305	21,731	3.1	689	3.1	694
Loren L. Zimmerman Joyous	RH	3-6	305	23,204	2.9	688	3.5	817
Best Bros. 100	GrH	5-9	305	19,486	3.5	688	3.6	719
J. Floyd Kreider 48	RH	3-9	305	24,303	2.8	687	3.3	821
David R. Stoltzfus 175	GrH	4-6	305	21,892	3.1	687	3.4	760
Robert C. Groff Damascu	RH	5-9	305	22,956	2.9	686	3.2	744
Alvin K. Fisher Joann	GrH	5-9	305	24,805	2.7	685	3.0	763
Eli K. Lapp Mary	GrH	6-7	305	22,193	3.0	685	3.9	866
Marvin R. Stoltzfus Eve	RH	2-7	305	21,655	3.1	685	3.8	830
Trout Spring Farm Jello	RH	5-2	305	20,776	3.3	685	3.3	693
Aaron E. Allgyer Sadie	GrH	9-8	305	21,755	3.1	684	3.5	780
Rosie	GrH	4-5	305	23,282	2.9	681	3.2	753
Chester M. Zook Disc	RH	3-5	305	21,290	3.2	684	3.8	812

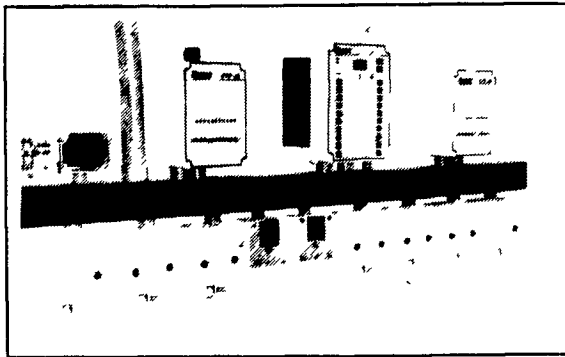
(Turn to Page C13)

aerotech[®]

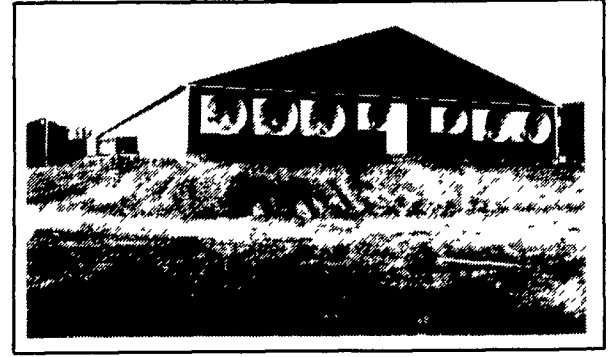
Tunnel Ventilation COOLING POWER



Evaporative Cooling On Opposite End Of Building

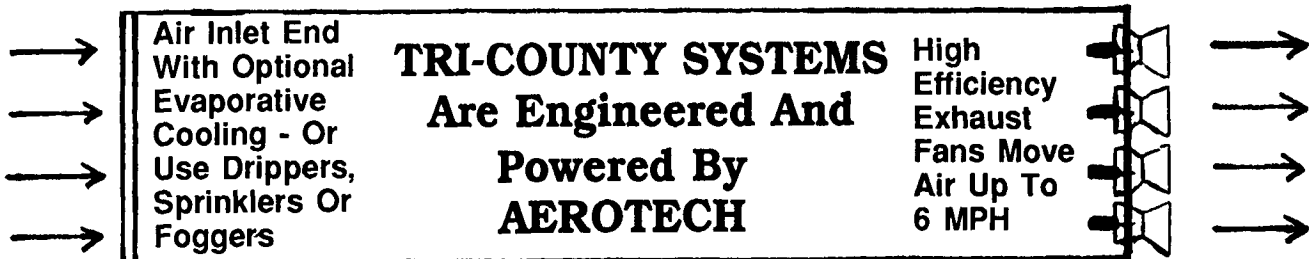


FANCOM Computerized Control Systems Stage Fans Precisely

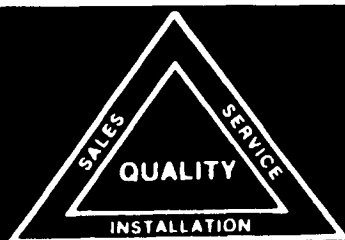


Exhaust Fans On One End Move Air Out Rapidly

Don't Let The Summer Heat Reduce Conception Rates Or Average Daily Gains



Let High Air Speeds Raise The Comfort Level Of Your Animals Or Birds. AEROTECH Tunnel Ventilation System Has Been Proven To Work In Over 20 Systems In The Area Over The Previous Three Years. *Works Great During Cold Weather Too!*



TRI-COUNTY

CONFINEMENT SYSTEMS, INC.

608 E. Evergreen Rd., Lebanon, PA 17042

Ph: 717-274-3488

Hours: Mon.-Fri.
7:00 to 4:30;
Sat. 8:00 to 12:00