

Central U.S.

Carlot

Pork Report
June 5, 1991

Report supplied by USDA

CENTRAL U.S. CARLOT PORK REPORT FOB OMAHA BASIS INCLUDES MAJOR PRODUCTION AREAS IN MIDWEST AS OF 3:00 P.M. COMPARED TUESDAY'S 3:00 P.M. CLOSE: FRESH PORK LOINS 1.00-2.00 LOWER; BOSTON BUTTS GENERALLY 1.00-3.00 LOWER; SKND. HAMS GENERALLY STEADY; SDLS. BELLIES 3.00 LOWER; MOVEMENT MODERATE ON MODERATE TO HEAVY SUPPLIES AND MODERATE DEMAND. CORRECTION: FRESH PICNIC CUSHION MEAT QUOTED ON 6/4/91 SHOULD NOT HAVE BEEN 116.00; IT SHOULD HAVE BEEN UNQUOTED.

59.5 LOADS PORK CUTS
18.0 LOADS TRIM/PROCESS PORK

PORK CUTS
LOINS, REG., FRESH
14-18 LBS., 7.0 LOADS, RANGE 106.50-115.00, WGHTD. AVG. 112.14.
1/2" TRIM, 14-18 LBS., 7.0 LOADS, RANGE 122.50-135.00, WGHTD. AVG. 130.71.

18-22 LBS., RANGE 108.00, WGHTD. AVG. 108.00 A.
1/4" TRIM 18-22 LBS., RANGE 125.00, WGHTD. AVG. 125.00 A.

LOIN, BLS CTRCT 5-7 LBS.
1.0 LOADS, RANGE 222.00, WGHTD. AVG. 222.00.

BNLS SIRLOIN .75-1 LBS.
1.5 LOADS, RANGE 194.00-195.00, WGHTD. AVG. 194.67.

TENDERLOIN 1.25/DN LBS.
RANGE 372.00, WGHTD. AVG. 372.00 D.

BOSTON BUTT
4-8 LBS. *, 4.5 LOADS, RANGE 75.00-81.00, WGHTD. AVG. 78.89.

1/4" TRIM 4-8 LBS., 4.0 LOADS, RANGE 94.00-99.00, WGHTD. AVG. 97.50.

COMBO'S 8/UP LBS., 1.0 LOADS, RANGE 75.00, WGHTD. AVG. 75.00.

SPARERIB, FRESH
1.5-3.5 LBS., 2.5 LOADS, RANGE 123.00-136.00, WGHTD. AVG. 127.80.

3.5-5.5 LBS., 1.0 LOADS, RANGE 106.00, WGHTD. AVG. 106.00.

5.5 LBS. AND UP, RANGE 78.00, WGHTD. AVG. 78.00 D.

SPARERIB, FROZEN
1.5-3.5 LBS., 1.5 LOADS, RANGE 121.00, WGHTD. AVG. 121.00.

LOIN BACKRIB (BOXED)
FRESH/FROZEN
1.5 AND DOWN LBS., RANGE 262.00, WGHTD. AVG. 262.00 C.

1.75/DN LBS., 0.5 LOADS, RANGE 238.00, WGHTD. AVG. 238.00.

1.75-2.00 LBS., RANGE 235.00, WGHTD. AVG. 235.00 A.

HAM, SKINNED, SELECTED
FRESH 17-20 LBS., 4.0 LOADS, RANGE 76.00-79.50, WGHTD. AVG. 76.88.

FRESH 20-26 LBS., 13.0 LOADS, RANGE 77.50-78.00, WGHTD. AVG. 77.92.

HAM, SKINNED, COMMODITY
FRESH 17-20 LBS., RANGE 74.00-76.00, WGHTD. AVG. 75.64 A.

FRESH 20-26 LBS., 2.0 LOADS, RANGE 74.50-75.00, WGHTD. AVG. 74.75.

FRESH 26-32 LBS., RANGE 73.00, WGHTD. AVG. 73.00 D.

FRESH 32/UP LBS., RANGE 70.00, WGHTD. AVG. 70.00 A.

BELLY, SDLS, SKIN-ON, FRESH
FRESH 10-12 LBS., 1.0 LOADS, RANGE 55.00, WGHTD. AVG. 55.00.

FRESH 12-14 LBS., 4.0 LOADS, RANGE 56.00-57.00, WGHTD. AVG. 56.50.

FRESH 14-16 LBS., 4.0 LOADS, RANGE 56.00-57.00, WGHTD. AVG. 56.50.

FRESH 16-18 LBS., 2.0 LOAD, RANGE 55.00, WGHTD. AVG. 55.00.

FRESH 18-20 LBS., 2.5 LOAD, RANGE 50.00, WGHTD. AVG. 50.00.

FRESH 20-25 LBS., 6.5 LOADS, RANGE 46.00, WGHTD. AVG. 46.00.

PORK TRIMMINGS
BONELESS PROCESSING PORK (CHEMICAL LEAN)

COMBO 42% FRESH, 1.0 LOADS, RANGE 55.00, WGHTD. AVG. 55.00.

BOXED 42% FROZEN, 1.0 LOADS, RANGE 49.50, WGHTD. AVG. 49.50.

COMBO 72% FRESH, 3.0 LOADS, RANGE 75.00-81.00, WGHTD. AVG. 77.67.

BOXED 72% FROZEN, RANGE 76.00, WGHTD. AVG. 76.00 A.

BONELESS PICNIC MEAT
COMBO 72% FRESH, 10.0 LOADS,

RANGE 78.00-82.00, WGHTD. AVG. 79.10.

SKINNED JOWLS
COMBO FRESH, 3.0 LOADS, RANGE 48.00, WGHTD. AVG. 48.00.

BOXED FROZEN, RANGE 42.00, WGHTD. AVG. 42.00 D.

NOTE: (*) REFLECTS 1/2" TRIMMED PRODUCT BROUGHT BACK TO A REGULAR COMMODITY BASIS.

ABCDE AFTER QUOTES REPRESENTS DAYS SINCE LAST ACTUAL MARKET TEST. QUOTES ARE DROPPED AFTER 5 DAYS OF NO TEST OR BEFORE IF THEY NO LONGER REFLECT CURRENT MARKET CONDITIONS.

PORK CARCASS CUTOUT

Wednesday, June 5

ESTIMATED GROSS CUTOUT VALUES OF A 175 LB. HOG CARCASS BASED ON USDA CUTTING YIELD TESTS AND CARLOT PRICES. WEDNESDAY'S CARCASS GRADES & PRICES PER CWT.:

CHANGE FROM TUES.'S VALUE US #1 73.91, CHANGE -1.38; US #2 71.60, -1.35; US#3 69.29, CHANGE -1.33; US#4 66.98, CHANGE -1.30.

TODAY'S CALCULATIONS FOR US#2 175 LB. PORK CARCASS:

HAM, SKINNED, 14-20 LBS., 21.01% OF CARCASS, 77.00 VALUE; LOINS, 1/4" TRIM, 14-22 LBS., 20.33% OF CARCASS, 130.75 VALUE, CHANGE FROM

TUES. -1.25; BELLIES, SDLS., 12-14 LBS., 13.90% OF CARCASS, 57.00, CHANGE FROM TUES. VALUE -3.00; SPARERIBS, 3.5DN LBS., 3.03% OF CARCASS, 127.75, CHANGE -11.25.

PICNICS, 8-12 LBS., 10.31% OF CARCASS, 53.75 VALUE, CHANGE -2.50; BUTTS, 1/4" TRIM, 4-8 LBS., 7.25% OF CARCASS, 97.50 VALUE, CHANGE -1.50.

JOWL, 2.85% OF CARCASS, 38.00 VALUE; NECKBONES, 1.52% OF CARCASS, 13.00 VALUE, CHANGE 0.50. FEET, 1.05% OF CARCASS, 14.50 VALUE, CHANGE 0.50; TAILS 0.22% OF CARCASS, 39.00 VALUE.

TRIM 72%, 2.19% OF CARCASS, 77.50 VALUE, CHANGE FROM TUES. 0.50; LARD 10.85% OF CARCASS, 11.25 VALUE.

TOTAL CARCASS: 94.51%.
US #2 CARCASS VALUE PER CWT.: 71.60.

NOTE: VALUE MAY CHANGE WITHOUT ADEQUATE TEST.

Valley Stockyards

Athens, Pa.

Wednesday, June 5, 1991

Report supplied by auction
HOLSTEIN HEIFER CALVES TO 185.00.

VEAL CALVES TO 102.00.
VEALER BULL CALVES TO 220.00.
SLAUGHTER CALVES 96.00 AND DOWN.

GRASSERS & FEEDERS TO 90.00.
LAMBS 50.00-63.00.

SHEEP 12.00-20.00.
HOGS 200-250 LBS. 46.00-52.00.

SOWS 38.00-42.00.
BOARS 32.00-38.50.
PIGS 22.00-44.00.

HEIFERS 52.00-60.00.
STEERS 60.00-62.75.
FEEDER STEERS 62.00-85.00.

BULLS 55.00-73.25.
GOOD COWS 56.00-58.50.
COWS MEDIUM 50.00-56.00.

COWS POOR OR SMALL 46.00 AND DOWN.
HORSES TO 555.00.

GOATS TO 90.00.
CATTLE MARKET STEADY.
CALF MARKET STEADY.

GOOD SALE; MARKET STRONG.

Viking Ship Calcium Nitrate:
vegetable nutrition the way you want it



Viking Ship Calcium Nitrate fertilizer 15.5-0-0 has been earning vegetable grower loyalty for more than forty years. In the field! Under weather conditions that often fail to cooperate! At harvest, when talk time is over and product promises are measured by results! Growers have found that Calcium Nitrate comes through.

Use Calcium Nitrate on your next crop. You will be pleased by the growth, yield and quality you see. The kind of profitable results achieved by vegetable

- Nitrate Nitrogen • Fast Response
- Early Maturity • Non-Acid
- Available Calcium • Precise Timing
- Controlled Growth • Water Soluble

growers across America, season after season, because of Calcium Nitrate's unique combination of nutrients:

Nitrate nitrogen for fast response. Better timing and control. Calcium Nitrate supplies nitrate, the non-acidifying nitrogen that's readily available for plant uptake. You'll see fast, uniform response with the precise feeding and timing you need for better growth and better crop management.

See Your Fertilizer Dealer

Earlier, more uniform maturity. Improved yield and quality. Nitrate nitrogen gives the quick optimum response the crop needs and then "runs out." Elimination of residual nitrogen and salt problems promotes better yields, uniform maturity and harvest efficiency. One good thing leads to another when you fertilize with Calcium Nitrate.

Vital calcium: it helps your crop; helps your soil. Calcium Nitrate contains 19% water-soluble calcium. This vital nutrient, combined with nitrate nitrogen, provides crop benefits both above and below the ground. Young leaves, stalks, roots and fruit must have calcium for proper development. Adequate calcium in the fruit markedly improves harvest and shipping quality. This low-salt, non-acid source of nitrate and calcium is unmatched by any other nitrate fertilizer.

Available in bag or bulk. Apply Calcium Nitrate straight or ask your dealer to include it in your vegetable fertilizer. You'll be glad you did!

As with any fertilizer application, consult your extension office or other advisory service for recommended practice that meets local crop and soil conditions.

HYDRO AGRI

WGM/Hydro
South San Francisco (415) 871-1770
Lovington, VA
(804) 263-8528

Viking Ship Calcium Nitrate

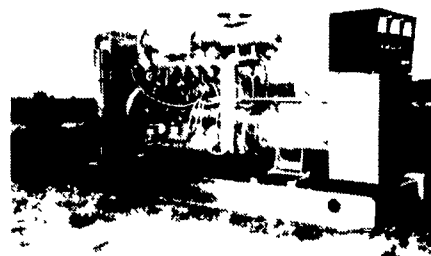
HOOVER'S HAY AUCTION

2nd & 4th Fridays
Of Each Month
12 Noon

3 to 6 ton of balage for sale (small round)

Sellers to call to schedule loads.
Located in Dauphin Co., 1 mile east of Gratz, along Rt. 25.

Gerald Hoover, #AU-002794L
717-365-3803



GENERATORS

Sales ★ Service ★ Rentals
★ Complete Generator Systems
★ PTO ★ Portables ★ 2-1600 KW
"We Service It If You Have It And Sell It If You Need It"

34 W. Mohler Church Rd.
Ephrata, PA 17522

Tel: 717-738-0300
Fax: 717-738-4329