

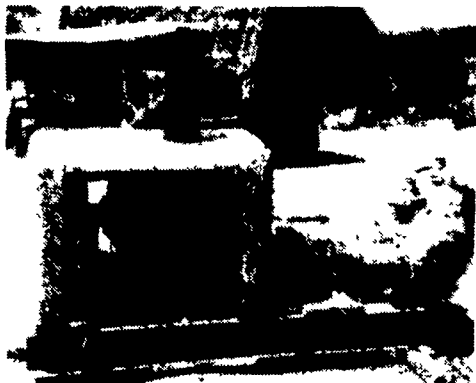
### Whistle Stop Grinding

Bradley Crossing Rd.  
East Chatham, N.Y. 12060  
Cranks Sold Outright -  
Farm or Industrial  
Original Manufacturer  
Not After Market

AC	Detroit	MM
Case	Ford	Oliver
Cat	Int	Perkins
Cummins	JD	White
D-B	MF	

518-392-4096 Bus. Day  
413-528-2007 Evenings & Weekends

### Diesel Engines Power Units



80 hp 3-17 Detroit Gorman-Rupp  
Centrifugal Water Pump \$3,900

#### Reconditioned Engines

160 hp 6 cyl. 913 Deutz Power Unit	\$5,800
90 hp 5 cyl. 912 Deutz Power Unit	\$3,500
100 hp 5 cyl. 912 Deutz Automotive	\$2,000

#### Used Engines

4-239T JD engine	\$1,550
450C JD Crawler, nice	\$14,500
80 hp 3-71 Detroit Power Unit	\$2,600
60 hp 2-71 Detroit Power Unit	\$1,800
912-913 Deutz Eng.	
53-71 Detroit Eng.	

**A.D. Hostetler**  
RD #2 Box 76  
Millinburg, PA 17844  
717-966-0736  
or 966-3561

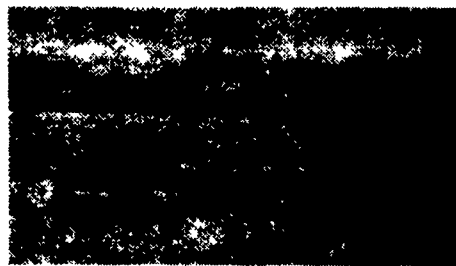
2 Leroy Gas  
Engines,  
4 Cylinders,  
60 hp, Ideal  
for power units  
Nolt Machine  
& Hydraulic  
Repair  
208 Brethren  
Church Rd.  
Leola, PA 17540  
(717) 656-8553

NH 310 baler with  
thrower  
NH 488 haybine  
NH 373 baler  
NH 852 round  
baler  
NI 5 wheel rake  
All excellent  
condition  
**Mankamyer  
Equipment**  
Somerset, PA  
(814) 445-5237

#### For Sale

NH 1112 SP Haybine,  
\$7,500  
JD 3980 Chopper pick-  
up, \$5,900  
JD 3RN Head \$2,000  
JD 7000 4 row planter  
\$2,900  
Calumet Vacuum  
Spreader, 1,500 gal.,  
\$2,400  
JD 9300 Backhoe,  
\$1,900  
Martin Equalizer Man-  
ure Auger, \$1,500  
Kasten Forage Wagon  
3B, \$950  
IH 430 Baler w/Thrower,  
\$950  
JD 1209 Haybine, \$600  
Chisel Plow 13T pull  
type, \$600  
NH 275 Baler, \$450  
MF 3B Semi-mtd. plow  
\$350  
AC Rake \$300  
Troy-Bilt Tiller \$550  
Case 780 Backhoe Best  
Offer  
JD L w/atch. \$950

717-733-0575



**New 8 Ton Wagon Gears  
\$450  
Ivan G. Hoover  
717-354-0595**

Oliver 1850 diesel, w/3 speed, good condition  
& rubber

MF 1085 diesel, 8 speed  
MF 180 diesel, good condition  
MF 165 diesel, 28" rubber, tractor completely overhauled  
MF 35 gas tractor  
MF 3 ~~SOLD~~ tractor  
30' King Wise elevator  
9' Brillion cultipacker  
Fox forage wagon 16' w/tandem axle gear  
Badge ~~SOLD~~ wagon w/tandem axle gear  
IH suitcase front end weights  
Used Brillion cultipacker parts  
5' rotary mower, 3 pth.  
MF Tractor Parts Dismantling: 20, 30, 35, 40,  
50, 65, 85, 90, 150, 165, 175, 178, 180,  
1080, 1100, 1130, 1135, 1150 w/cab

**Jonas W. Nolt**  
403 Centerville Rd., Newville, PA 17241  
(717) 776-6242 No Sunday Calls  
No Out-Of-State Personal Checks

### USED EQUIPMENT

Kubota L3750 Tractor/Loader/Backhoe  
Kubota B9200 HSD Tractor w/Loader, 400 Hours  
Kubota L185 Tractor 4x4 w/Loader, 1640 Hours  
Kubota 225 Belly Mower, 851 Hours  
Kubota L245DT w/Loader, Low Hours, Excellent  
Condition  
Kubota L305 Tractor, 2WD w/Bush Hog Loader,  
30 HP, 770 Hours  
Kubota L355SS Loader, Shuttle, 38 HP, 1800  
Hours  
Ford 1920, 700 Hrs., Excellent Cond.  
John Deere 1530 w/Loader, 45 HP, Diesel  
John Deere 375 Skid Loader, Ex. Cond, 200 Hours  
Case International 275 4x4 w/loader, excellent  
cond.  
Massey Ferguson 165 w/loader, 2,000 hours  
Crawler/Loader/Backhoe, magnatrac, ex. cond. -  
only \$8,500  
LB 1714 Klotl w/loader, 4x4 diesel  
  
Ag Tech Preseeder  
Bolens 212 Diesel, 3 Cyl. w/Loader, 640 Hours  
Bolens 931 36" Mower & 30" Blower  
Ford 50" Fall Mower  
Gravely G20 Tractor w/50" Deck, 530 Hours  
Gravely GMT 9000 Tractor w/Blower, Mower and  
Cab  
Gravely Pro 50, 20 HP, 50" Cut w/Catcher - Used  
Only Once!  
White FR18 w/60" Front Mower & vac. box  
Hahn Plugger  
Danuser 2040 Post Hole Digger w/24" auger  
Log Splitter, Pull Type, Hyd.  
Log Splitter, Vertical, 36", 3 Point  
MF 1655 Tractor w/54" Mower, 48" Tiller, Blade,  
16 HP  
Myers Snowplow, Hyd. Angle - Fits L3750 or  
L4150  
Simplicity Riding Mower, 24" Deck and Blade  
Snapper 30" w/Bagger, Elec. Start - 6 Years Old  
Wheel Horse 16 HP Kohler w/48" Deck  
Lindig 8-Hp. Brush Chipper...\$900

Call Now For Special Prices!

### NICARRY EQUIPMENT CO.

RD #2, Box 2008, Reading, Pa. 19605  
215-926-2441  
Located: 4 Miles North of Reading on Rt. 61  
3 Miles South of Leesport  
Hours: Mon. thru Fri. 8 to 5; Sat. 8 to 3

### TRACTORS

1949 JD B w/cultivator, very nice  
Farmall 400 diesel w/belt pulley

### HAY EQUIPMENT

IH 47 baler w/#10 thrower  
NH 770 harvester for parts  
NH 850 round baler w/auto wrap  
NH 270 baler w/thrower, nice .....\$1500  
JD 24T baler w/30 thrower, good .....\$1675  
JD 24T baler w/bale chute  
JD 336 baler w/30 thrower, nice  
NH 320 baler w/thrower, nice  
AC 303 baler w/bale chute, good  
NH 273 w/bale chute  
NH 488 haybine, good rolls, good condition  
IH 1190 haybine, nice .....\$2650  
NH 54A bale thrower, nice

### 150 BALERS FOR PARTS HAYBINES FOR PARTS

### GRAIN DRILLS

JD FBB 15x7 hoe grass fertilizer, good  
JD FBB double disc 15x7, grass & fertilizer, nice

### MISCELLANEOUS

IH 400 air planter, for parts  
JD 5 1/2' grass head for JD 38 harvester, good  
White 5400 4R corn planter dbl. disc openers, no-  
till monitor, dry fertilizer, nice .....\$1200

### KEITER'S USED FARM MACHINERY

Robert L. Keiter  
Hallfax, PA 17032 (Carsonville)  
25 Miles North of Harrisburg  
(717) 362-9086  
We Ship UPS!

### FORKLIFTS



13,000 Hyster, 1981 Dual Pneumatic, Diesel S/S, Full Cab, Excellent Condition .....	\$13,000
2-12,000 Lb. Tow Motor, Dual Pneumatic, Diesel, Very Good Condition.....	\$8,000/each
10,000 Yale, Solid Tire 3-Stage Mast, Good Condition.....	\$3,500
8,000 Lb. Hyster, Dual Pneumatic, 1984, GMC Gas, S/S 2,700 Hrs., Like New .....	\$13,500
6000 Lb. Hyster, Pneumatic, Side Shift, LPG, Very good condition .....	\$5,000
Forks 25,000 Lb. Cap. ....	\$750/Pair
10,000 Lb. Cat pneumatic, 1980 Runs very good w/light noise in engine, low mast .....	\$5,500
12,000 Lb. Yale solid tire, LPG, very good condition, low mast, good for rigging work.....	\$6,500
3,000 Lb. Electric Walk Behind.....	\$2,500
2,000 Lb. Electric Crown Straddle.....	\$1,500
5,000 Lb. Cat Solid Tire 3 Stage, LPG, excellent condition .....	\$4,500
4,000 Lb. Cat Pneumatic, S/S, Needs Some Work...	\$1,800
5,000 Lb. Cat, 1981 Pneumatic LPG, Excel. Cond...	\$6,500
8,000 Lb. Hyster Pneumatic Diesel, Side Shift, Runs Good.....	\$3,800

### HYMAN EQUIPMENT IN BALTIMORE, MD.

(301) 486-6691

Call Alan Hyman Anytime

38 Forklifts In Yard At This Time

Mechanic Specials \$500 to \$1500

## Best Buys in Used Equipment

### USED TRACTORS

Farmall C w/cultivator  
IH 5088 w/cab, 1900 hrs., nice  
IH 656, gas w/loader  
Kubota L2850, 4WD w/loader, 200 hrs.,  
like new  
Ford 6000

Vicon disc mower conditioner,  
nice condition

### USED EQUIPMENT

IH 550 manure spreader  
NI 213 manure spreader  
IH 963 corn head  
IH 1190 9' mower conditioner  
Brillion 14' cultimulcher, like new  
Ford model 142, 4 btm. plow w/auto  
reset  
JD 4 btm. rollover plow  
JD model FB grain drill, 18 double  
disc openers  
Wetmore grinder mixer, 130 bu.

## Eckroth Bros. Farm Equipment

RD 2 Box 24A, New Ringgold, PA 17960

717-943-2131

7:30-5:30 Mon.-Fri. 7:30-4:00 Sat.

