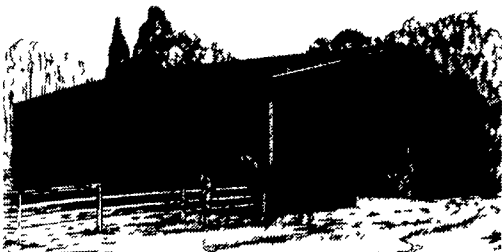


4 BUILDINGS AND SUPPLIES

Quality Custom Built Pole Buildings



We use only the best in materials to give you a long-lasting maintenance free building. For quality that counts, don't settle for less.

Kaufman Construction
305 Hahnstown Rd.
Ephrata, PA 17522
717-738-1259

54'x104'x15'

\$28,594

Tax Included - Additional charge outside 30 mile radius



Price Includes

- * 24'x15' Sliding Door on one end
- * 1 22'x13'6" Sliding Door on side
- * 1 3'0"x6'8" Entrance Door
- * 14 10' Skylights
- * 12" Overhang All Around Gables & Eaves
- * Trusses 4' on Center for More Snow Load
- * Spouting & Down Spouts

Call Or Write
Stoltzfus Builders

50 North View Rd., Litz, PA 17543
24 Hr. Service
717-664-3540



1212 N. Reading Rd.
Stevens, PA 17578
215-267-4911

Located Along
Rt. 272 Just South
Of PA Turnpike
Exit 21
1-800-537-0580

POST FRAME BUILDING SUPPLIES

★ Check Our Low Prices! ★

- For The Farmer And The Contractor... Do-it-Yourself Package Buildings Available In Many Sizes!
- Large Stock Of 4x6 & 6x6 Treated Posts And All Sizes Of Treated Lumber
- Cannon Ball Sliding Doors And Equipment
- Framing Lumber And Trusses



ALUMAX
BUILDING PRODUCTS
A Division of Alcoa Fabricated Products, Inc.

- Painted 29 Ga. Steel By Alumax-PowerPanel And McElroy Metals!



MC ELROY METAL, INC.

WEAVER

CEILING & INSULATION

WHY TRI-PLY CEILINGS?

- Low Cost - Installed
- Strong - A Woven Polyolefin Fabric
- Soft - Sound Absorbent
- Smooth White - Easy To Wash
- For New Or Renovated Buildings
- Installations In PA & Surrounding States

717-539-2615 or 717-949-3721

CRANE RENTAL

11 Ton
102'
Boom

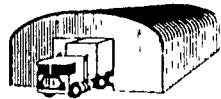
Call For
Appointment



automatic farm systems

608 Evergreen Rd.
Lebanon, PA 17042
(717) 274-5333

DEAL DIRECT STEEL BUILDINGS



STRAIGHT SIDES
NO LOST SPACE

Compare and see the

LARGE SAVINGS

Some Standard Models In Inventory

25x30 35x70 40x100 30x40
40x80 50x200 30x60 45x110

Some other models available!

- * 20 Year Warranty
- * Immediate Delivery

ATLAS STEEL BUILDINGS
1-800-338-8457

5 GRAIN EQUIPMENT

FARMI, Model #HB-10, automatic aeration control w/probe for grain drying equipment (new), \$85 717/733-6698 ask for Clair

FOR SALE 275 VanDale auger mixer wagon, electronic scales 7 1 7 - 5 2 7 - 2 4 4 1, 717-527-4772

Grain tanks w/fans. Perforated floors 11,000, & 7,000, 5,000 bushel Good condition. Best offer (301)778-0290

Will dismantle and set up used grain bins and equipment Can furnish new hardware and accessories Sones Grain Systems 717/584-2282

5 GRAIN EQUIPMENT

Leon H. Martin Construction
Specializing In New & Used Grain Tanks, Built and Dismantled
820 Little Mountain Road
Myerstown, PA 17067
(717) 933-8287



Grain Bins
Grain Dryers

MC Dryers

Sweet Elevators

Sones Grain Systems
Jim & John

Check Our Prices Before You Order
We Personally Install Everything We Sell
R.D. #1, Box 417 Muncy, PA 17756
717-584-2282



5 GRAIN EQUIPMENT

Imperial AGRI-BINS



**Compare our Feature To Any Bin on the Market
No Other Bin Comes Close**

- Smooth Wall Construction
- Welded - One Piece Body
- Waterproof Design - No Feed Waste
- Fully Assembled At Factory
- Ground Control VENTED Cover Std
- 10 Year Warranty On Bins
- 5 Year Warranty On Accessories

Call for the name of the nearest dealer
1-800-558-2945
Inquire for Details
(715) 359-0200



FOB Wausau Wis Van Wert Ohio Hartan Iowa

1000 bu per hour M C Continuous Flow Dryer, includes (8) 20HP motors, loaded on your truck, \$5,000 400 Bu per hour M.C Continuous Flow Dryer, includes (2) 20HP Motors, loaded on your truck \$5,000 302/398-8014

(3) 20,000 bushel grain bins 40,000 bushel grain bin. Grain dryer. Hammer mill (6) 500 bushel bins (2) wet tanks (2) elevator legs. Southern States, Middletown, MD (301)371-6040.

9" U-Trough auger, several 3, 5 and 7 1/2 HP transmissions Middleburg 717/837-0724.

6 DAIRY EQUIPMENT

6 DAIRY EQUIPMENT

- (1) DeLaval Vacuum Pump 7 1/2 HP Motor
- (1) DeLaval Vacuum Pump 7 1/2 HP w/oil reclaimer
- (1) Double 4 DeLaval Herringbone stalls and feeders
- (8) Chore-Boy Pulsators w/controls
- (5) Boumatic Pulsators w/controls
- (1) Single Inlet 2" DeLaval receiver group
- (1) Single Inlet 2" Boumatic receiver group
- (1) 2" Surge Low Line or Double 3 Herringbone Parlor

703/382-0570
after 8:30 PM

MUELLER

HiPerForm

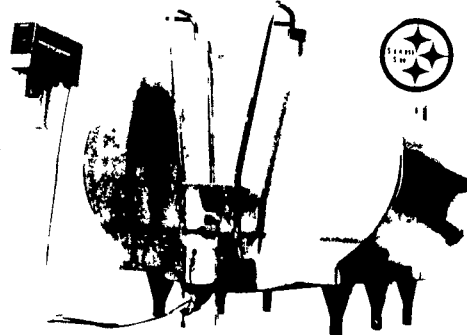
"The Ultimate Measure of a Cooler's Wirth Is Its Performance!"
and when you put your milk in a Mueller HiPerForm

...its like Money in the Bank!

June Is Dairy Month, A Special Thanks To Our Dairy Customers

MUELLER AND MARTIN'S REFRIGERATION

Recognized As An
Industry Leader



Leading The Way With Efficient, High-Performance Products!

Back to Nature?



Milk never left!

There Is No Substitute For A Mueller Milk Cooler

Good Used Tanks In Stock

MARTIN'S REFRIGERATION, INC.

Phone (717) 352-2783
Sales & Service

1122 Woodstock Rd
Fayetteville, Pa 17222

6 DAIRY EQUIPMENT

FOR SALE: Used 2" Boumatic stainless steel pipeline. Call 717-627-4824.

FOR SALE: Used 1000 gal. Dari-Kool tank. 717-627-4824

FOR SALE: Used DV300's w/Dellatron II pulsators, \$325.; (8) parlor SST #2 takeoffs, \$325.; Used DeLaval Super-Flo Lite claws, used DV300's w/vacuum pulsator, \$195.; Used Super claws, \$85.; Used 06 shells. Used DeLaval magnetic & vacuum pulsators. Used CIP washers, weigh jars, meters, hose support arms, etc. Free Shipping. E-ZEE MILKING EQUIPMENT, Gordonville, Pa. 17529. 717-768-7599

FOR SALE: Used complete 65lb. DeLaval weigh jars, \$360.; Used DeLaval Flo-Master meters, \$325.; Used complete Universal, Surge, Bou-matic etc 65lb weigh jars, \$290 each New DHIA approved Warkato milk meters, \$148.; Used EWM milk meters, \$265.; New CIP washers, complete, \$38 Free UPS Shipping Satisfaction Guaranteed. E-ZEE MILKING EQUIPMENT, Gordonville, Pa 17529 717-768-7599