

Ida's Notebook

Ida Risser



Our youngest grandson is almost six months old. He is the first of our grandchildren to be born in Lancaster County. He is the first one that we can watch grow from day to day.

He is definitely being raised in a farm environment. Many hours are spent in the milkhouse and in the barn as his mother mixes the feed for the 100 some dairy animals. Sometimes he is in a backpack as she milks the cows.

And, he seems to thrive on his outdoor life. Often, on a cool morning he will be sitting in his infant chair near the barn watching the black and white calves or the black and white cats. They seem to enjoy watching him also as he kicks and jumps.

He is as big as most one-year-old children — it helps to have tall parents. Occasionally my husband

and I get to take care of him in the evening as his parents put some loads of alfalfa or triticale in the big silo. We have a crib in the corner of our large kitchen but it doesn't get used very often.

His bottle can be warmed in the hot water at the milkhouse and he has learned to eat cold baby food from jars. I always thought of my babies as more fragile, and I kept them in the house. Of course, sometimes when the weather was nice, I'd put their basket or playpen on the porch. I remember one time that a baby about seven months old tilted the basket on legs, as it sit in the yard, and fell out screaming. I was in the garden and I jumped over three of my four-foot pea fences to get to him. He was simply scared. Today I'd probably go around instead of over those fences.



Farm Women Societies

Lebanon Society 20

Lebanon Farm Women Group #20 met May 13 at the home of Ruth Lefever.

She read some verses from I Corinthians 13 and a poem titled, Mother's Day Bouquet.

Members responded to roll call by answering the question, "Have you ever had your water tested?"

Dennis Hoke presented a program on water quality. He answered questions and showed slides.

He also had a variety of pamphlets and literature available.

President Linda Himmelberger reported on the state board meeting. Four \$500 scholarships are available.

Members will be having the food stand for the FFA Dairy Show at the Lebanon Area 4-H Fairgrounds.

The next meeting will be held June 10 at Billie Hill's.

Berks Society 1

The Society of Farm Women of Berks County Group 1 held its May meeting at the home of Donna Hetrick, Oley, for fun night. Eighteen members attended.

State cookbooks will be sold for \$15 at the Spring Rally on May 23.

Group 1 received a certificate at the volunteer dinner held by Berks Heim.

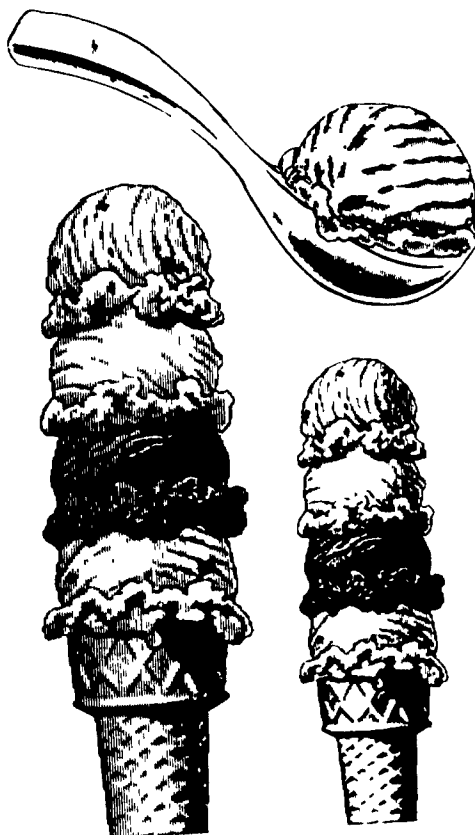
The County Convention is set for October 5 at Hagg's Hotel, Shartlettsville.

Volunteers are needed to help Ruth and Dot at the Scenic River Festival on July 24 to 28.

Craig Shergold is a 7-year-old boy with a brain tumor. His wish is to receive the most get well cards. Send them in c/o Children's Wish Foundation, 3220 Perimeter Center East, Atlanta, GA 30346.

The summer picnic will be held on August 18 at Levengoods.

Members will help at Berks Heim Festival on June 1.



KEYSTONE GUN-KRETE

CONCRETE PUMPING SERVICE

Featuring

- Sidewinder 45 Concrete Pump • Up To 40 Cubic Yards Per Hour
- Pump Up To 150 Ft Vertical And 800 Ft Horizontal

CONCRETE SPRAYING SERVICE
A Proven Way Of Applying Concrete

- Repair Retaining Walls
- Strengthen Existing Masonry Walls
- Reseal Manure Pits
- Manure Pit Construction
- Trench Silo Construction
- Silo Repair

KEYSTONE GUN-KRETE
61 Poplar Street Gordonville, PA 17529
(717) 768-3641

POLE BUILDINGS

By Sam Stoltzfus



Custom Built Agricultural, Residential & Commercial Buildings For A Variety Of Needs

TALBOTVILLE CONSTRUCTION

Honey Brook, PA

(215) 273-2870

(215) 273-3495 Res.

STEEL BALE BOXES

With 8-Ton Wagon Gears



3 Sizes Available... 16', 18', 20' with or without running gear

• Also will fit sides onto your flat wagon

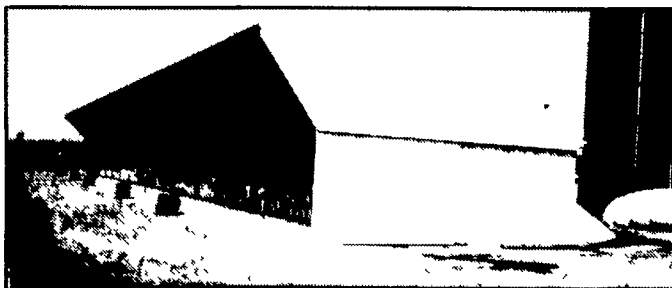
MFD. BY:

STOLTZFUS WOODWORK

Rt. 897 North — Gap, PA 17527
717-442-8972

-ATTENTION DAIRY FARMERS-

WHY NOT CONSIDER ADDING A "VIRGINIA-STYLE" HEIFER BARN? IT CAN MAKE YOUR OPERATION MORE EFFICIENT AND EASIER TO MANAGE (It'll Cost Less Than You Think)



Open Front With Feed Alley And Tile Feed Trough, Adjustable Curtain Or Vent Doors On Backside Of Building.

8'x12' Poured Concrete Pit With Waffle Slats And Poured Concrete Pen Dividers, Sleeping Area Sloped To Slats.



★ PITS CAN BE S.C.S. APPROVED FOR COST SHARING ★

For Free Estimates And Information Contact Larry Horst:

Home (717) 656-7799 Office (717) 354-4740

Building By

KING CONSTRUCTION CO.

601 Overly Grove Rd., New Holland, PA 17557 (717) 354-4740