

**Greencastle Livestock**

Greencastle, Pa.

Monday, May 27, 1991

**TOTAL CATTLE: HD.**  
**SLAUGHTER CATTLE RECEIPTS: HD.**  
**SLAUGHTER STEERS: 178 HD.**  
**TREND: STEADY. HIGH CHOICE & PRIME 2-4 75.00-78.50; CHOICE 2-3 95.00-107.50; 1075-1375 LBS. 74.00-77.00; CHOICE 2-3 OVER 1375 LBS. 69.00-73.75; CHOICE 4 ALL WEIGHTS 71.00-73.50; SELECT AND CHOICE 1-2 950-1100 LBS. 68.00-73.00; SELECT AND CHOICE 1-2 1100-1375 LBS. 69.00-73.50; SELECT AND CHOICE 1-2 OVER 1375 LBS. 66.00-71.00.**  
**HOLSTEINS: CHOICE 2-3 1050-1450 LBS. 66.00-72.00; SELECT 1-2 1050-1450 LBS. 61.50-65.50.**  
**SLAUGHTER HEIFERS: 78 HEAD.**  
**TREND: STEADY. CHOICE 2-3 850-1000 LBS. 69.00-75.00; CHOICE 2-3 1000-1250 LBS. 72.50-76.75; CHOICE 4 ALL WEIGHTS 68.00-73.00; SELECT AND CHOICE 1-2 850-1000 LBS. 65.00-71.50; SELECT AND CHOICE 1-2 1000-1250 LBS. 69.00-74.50.**  
**HOLSTEINS: CHOICE 2-3 1000-1350 LBS. 64.00-69.00; SELECT AND CHOICE 1-2 1000-1350 LBS. 59.00-63.50.**  
**SLAUGHTER BULLS: 24 HEAD.**

**TREND: 1.00-2.00 HIGHER. YG#1 ALL WEIGHTS 66.00-77.00; YG#2 ALL WEIGHTS 57.00-65.00.**  
**BULLOCKS: 10 HEAD. CHOICE 1-3 1150-1375 LBS. 66.00-71.50; CHOICE 1-3 950 TO 1050 LBS. 90.00-99.00.**  
**COWS: 169 HD. TREND: STEADY.**  
**BREAKING UTILITY & COMMERCIAL UP TO 58.00 FEWER 62.00; CUTTER & BONING UTILITY UP TO 61.00; CANNER & LOW CUTTER 55.00 & DOWN.**  
**STOCKER AND FEEDER CATTLE RECEIPTS: 90 HEAD. TREND: STRONG DEMAND. BEEF TYPES: 200-400 LBS. STEERS 90.00-110.00, BULLS 90.00-105.00, HEIFERS 80.00-101.00; 400-600 LBS. STEERS 80.00-101.00, BULLS 75.00-93.00, HEIFERS 75.00-90.00; 600-800 LB. STEERS 76.00-84.00, BULLS 65.00-72.00, HEIFERS 70.00-80.00; 800-975 LBS. STEERS 70.00-75.00, BULLS 58.00-64.00, HEIFERS 67.00-74.00.**  
**HOLSTEINS & DAIRY CROSS: 200-400 LBS. STEERS 90.00-107.00, BULLS 80.00-104.00, HEIFERS 80.00-120.00; 400-600 LBS. STEERS 75.00-80.00, BULLS 68.00-74.00, HEIFERS 70.00-82.00; 600-800 LBS. STEERS 65.00-75.00, BULLS 60.00-66.00, HEIFERS 65.00-76.00; 800-975 LBS. STEERS 61.00-66.00, BULLS 55.00-60.00, HEIFERS 63.00-70.00.**  
**CALVES: 440. VEAL CALVES:**

**TREND: STEADY. CHOICE 150-300 LBS. UP TO 118.00; GOOD 150-300 LBS. UP TO 110.00; GOOD 100-150 LBS. UP TO 125.00; GOOD 80-100 LBS. UP TO 90.00; STANDARD 80 TO 100 LBS. UP TO 85.00 LBS.; STANDARD 80 LBS. & DOWN UP TO 80.00. CALVES RETURNING TO FARM: TREND: STEADY. HOLSTEIN BULLS OVER 100 LBS. UP TO 210.00 UNDER 100 LBS. UP TO 215.00; HOLSTEIN HEIFERS OVER 100 LBS. UP TO 190.00 UNDER 100 LBS. UP TO 170.00; BEEF TYPE BULLS OVER 90 LBS. UP TO 190.00, BEEF TYPE HEIFERS OVER 90 LBS. UP TO 170.00.**  
**SHEEP AND LAMBS: 108 HD. TREND: STEADY TO WEAKER. CHOICE 80-100 LBS. 58.00-63.00; 100-120 LBS. 55.00-60.00; 120 & OVER 45.00-52.00; MEDIUM & GOOD ALL WEIGHTS 54.00-60.00; FEEDER LAMBS, 60 TO 85 LBS. 58.00-65.00; LIGHT LAMBS, 65.00-70.00.**  
**SHEEP: EWES LEAN 17.00-21.00; EWES FAT 10.00-15.00; YEARLINGS 25.00-35.00; BUCKS 14.00-18.00.**  
**GOATS: 220 HD. SMALL 14.00-31.00; MEDIUM 32.00-55.00; LARGE 56.00-105.00.**  
**HOGS, SOWS & BOARS: 110 HD. HOGS: BARROWS & GILTS. TREND: STEADY. 210-250 LBS. 53.00-54.50; 250-260 LBS. 51.50-53.50; 260-270 LBS. 50.00-51.50; 270-300 LBS. 47.00-49.55. LIGHT HOGS: 140-180 LBS. 42.00-46.00; 180-210 LBS. 45.00-50.00. SOWS: TREND: STEADY TO 1.00 LOWER. GOOD SOWS UNDER 400 LBS.**

42.00-45.00; GOOD SOWS OVER 400 LBS. 43.50-46.50; CULL SOWS ALL WEIGHTS 40.00 & DOWN. BOARS: TREND: STEADY. 180-210 LBS. 40.00-45.00; 210-260 LBS. 42.00-45.00; 260-300 LBS. 38.00-41.00; 300 LBS. & OVER 37.00-40.00.  
**SALE EVERY MONDAY AT 2:00 P.M. & EVERY THURSDAY AT 1:00 P.M.**  
**HAY & STRAW SALE EVERY MONDAY & THURSDAY AT 11:30 A.M.**  
**SPECIAL FEEDER CATTLE SALE: FRIDAY, JUNE 7, 1991 AT 7:15 P.M.**  
**SPECIAL FEEDER PIG SALE: SATURDAY, JUNE 22, 1991 AT 1:00 P.M.**

and Good 70/110 lbs. 85.00-92.50, few Utility 50/80 lbs. 50.00-60.00. Farm Calves: No. 1, Holstein Bulls 85/125 lbs. 189.00-225.00, No. 2, 75/120 lbs. 170.00-200, few 110.00; few No. 1, Hol. Heifers 90/110 lbs. 160.00-185.00, few No. 2, 80/115 lbs. 87.50-135.00. Few Beef Cross 70/120 lbs. bulls and heifers 130.00-200.00.  
**HOGS 288...Barrows and gilts: steady to strong. US No. 1-2 220/245 lbs. 53.25-53.75, 1-3 210/235 lbs. 51.75-53.00, 2-3 225/250 lbs. 50.00-51.00, lot 2-4 295 lbs. 45.75, 1-3 170/200 lbs. 46.00-50.50, few 90/140 lbs. 62.00-75.00. SOWS: 1.00 to 1.50 higher. US No. 1-3 300/500 lbs. sows 43.50-46.00, few 41.50, 500/665 lbs. 45.00-47.00, few Medium 375/435 lbs. 39.75-41.00. Boars (all weights) 38.50-41.00.**  
**FEEDER PIGS 150...Couple Lots US No. 1-3 20/27 lbs. feeder pigs 135.00 & 165.00, 35/60 lbs. 88.00-100.00 --- all per hundredweight.**  
**SHEEP 50...Spring slaughter lambs: Choice & Prime 35/90 lbs. spring sl. lambs 59.00-70.00. Slaughter sheep 13 00-26.00, mostly 15.00-23.00 - all Cwt.**  
**GOATS 30...Few Medium & Large 45.00-60.00, Large Kids 30.00-48.00, few Small Kids 17.50-25.00 --- all per head.**

**Leesport Livestock Auction**

Leesport, Pa.

Wednesday, May 29, 1991

Report Supplied by PDA

**CATTLE 217...PDA... Supply included 75 head steers, and 91 cows ... Compared to last Wednesday's market: Slaughter steers steady to 1.00, spots to 2.00 higher; Cows strong to 1.00 higher.**  
**Few High Choice & Prime 1260/1400 lbs. sl. steers 77.75-79.00, Choice 1035/1400 lbs. 75.75-78.50, Select 67.00-74.25, one 79.00; High Choice & Prime 1400/1570 lbs. Holsteins 70.50-73, Choice 1300/1500 lbs. 68.25-69.50, Select 64.25-67.50, Standard 60.50-63.25. Few High Choice & Prime 1350/1565 lbs. sl. heifers 76.00-77.25, one Choice 70 50, few Select 62.00-65.25, few Standard 55.25-63.75. Breaking Ut. & Commercial sl. cows 55.00-57.75, few 59.50, few low dressing 48-53.50, Cutter & Boning Utility 53.75-56.75, few 57.75, Canner & low Cutter 49.75-52, few 55.50, Shells down to 36.50. Few Choice sl. bullocks 68.25-75.00, few Select 63.75-68.25; Select & Choice 63.50-68.00. One Yield Grade No. 1, 1325 lbs. sl. bull 64.00. Feeder Cattle: Few Medium & Large Frame No 1-2, 420/560 lbs. steers 86.00-109.00. Few Medium Frame No. 1, 330/375 lbs. heifers 78 00-91.00.**  
**CALVES 158...Few Choice vealers 100.00-110 00, one Good 99 00, Standard**

**Dewart Livestock**

Dewart, Pa.

May 27, 1991

Report Supplied by PDA

**STEERS: 59.00-70.50.**  
**HEIFERS: TOO FEW TO QUOTE.**  
**GOOD COWS: 50.00-58.25.**  
**CANNERS AND CUTTERS: 45.00-50.00.**  
**BULLS: 59.00-65.25.**  
**VEAL: 90-190 LBS. 99.00-210.00, 70-90 LBS. 80.00-99.00.**  
**HOGS: 50.00-53.50.**  
**SOWS: 42.00-46.75.**  
**FEEDER PIGS: 18.00-40.00 HD.**

**HAY, STRAW & GRAIN SALE**

Every Thursday at 1 p.m.  
 Auction will continue all year long  
 Vintage Sales Stables, Inc.

(Rt. 30, 10 miles east of Lancaster in Paradise, PA)

For info. L. Robert Frame, Sr. president  
 717-442-4181 business  
 215-458-8518 home Glenn S. Frame Mgr.

**HOSTETTER PORK**



Wanted To Buy Crippled and Disabled Sows and Boars

Hogs Slaughtered For Federal Inspection  
**PHONE 717-274-7609**

Who says that owning farm equipment makes it work harder!

Leased equipment is just as productive, and leasing is easy on your cash flow!

That's because there is no down payment, stock purchase, or any other up front charges for leased equipment. Payments are fixed throughout the lease, and you can make them monthly, quarterly, semi-annually, or annually, whichever fits your cash flow pattern the best.

Your options are open; renew the lease for an additional term, purchase the equipment at the end of the lease, or simply return it. And there's more! Stop by and we'll tell you about the tax benefits, about conserving your capital for more profitable purposes and about making better use of existing credit lines. You can do it all by using our equipment leasing service.

For more information, call the Farm Credit office near you:

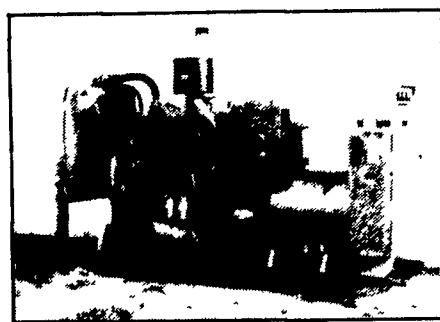
In southeastern PA  
 Keystone Farm Credit, ACA  
 1-800-252-2080

In western PA  
 PennWest Farm Credit, ACA  
 1-800-752-5093

In northern PA  
 Northeastern Farm Credit, ACA  
 1-800-326-9507

In south central PA  
 York Farm Credit, ACA  
 1-800-673-2416

**FARM CREDIT**  
 Nobody knows the field better.



**MARTIN ELECTRIC PLANTS**

Generator Systems Manual or Automatic With Service You Can Trust

**GENERATOR SETS FOR SALE**

- John Deere Sets New
- 25 KW Isuzu Diesel-New
- 60 KW Isuzu Diesel-Used
- 100 KW Murphy Diesel-Used
- 100 KW Detroit Diesel
- 12V71N Long Life 900 RPM

RD #2 Box 28 Pleasant Valley Rd., Ephrata, PA 17522  
**Tel: 717-733-7968 Fax: 717-733-1981**

Here's a revolutionary feeding program from Pioneer...



The Quality Forage Source<sup>SM</sup>

If you're striving to increase the yield and feeding value of forage crops, there's no better place to start than with your local Pioneer sales representative:

**Eastern Sales Area**  
**717-653-5605**

©, SM Servicemarks, registered or applied for, of Pioneer Hi-Bred International, Inc., Des Moines, IA. All sales are subject to the terms of labeling and sale documents.  
 ©1990 Pioneer Hi-Bred International, Inc.

