

# Blair Co. DHIA

(Continued from Page E3)

Name	Brd.	No. Cows	% Days In Milk	Milk Lbs.	Fat Lbs.	Protein Lbs.
Rodrick & Trudy Hinich						
21	GH	7-0		21,626	4.4	967
64	GH	4-3		23,740	3.7	886
W Dean Stern						
Wendy	RH	8-2		23,740	4.1	974
227	GH	3-8		24,486	764	
E F Smith Farm						
Comet 92	RH	4-3		22,453	3.8	859
Jerry + Joan Bechtel						
5824	RH	2-9		23,279	4.3	1015
D E Hileman Farms						
61	GH	3-11		25,530	859	
Hilecrest Farm						
236	RH	5-9		23,245	760	
307	RH	3-11		22,944	4.1	962
208	RH	3-1		24,480	830	3.8
104	RH	2-9		25,412	843	3.6
Martin Stayduhar						
28	GH	3-1		22,771	3.7	861
1	GH	2-11		21,109	4.3	924
James + Debra Byler						
104	RH	5-1		21,817	764	
Jam	RH	4-4		25,189	3.3	850

## Wyoming County DHIA March, 1991 Rolling Herd Average

Name	Brd.	No. Cows	% Days In Milk	Milk Lbs.	Fat Lbs.	Protein Lbs.
Insinga Hols-teins	3	73.5	88.5	20,497	776	662
Tom Sands	3	60.3	90.2	20,202	763	654
Richard Place	3	60.7	89.6	20,388	753	645
Stowell Farms	B3	13.7	89.6	21,171	705	640
R+W Kuzma Farm	B3	52.6	88.2	19,596	665	630
Da Vue Hols-teins	3	44.2	88.4	19,757	728	629
Wayne-Roger Sher-wood	3	63.2	89.7	18,575	709	602
William Dudock Jr	B3	59.7	83.9	18,024	573	587
Stowell Farms	B9	15.7	86.2	18,442	659	582
Roger S Wil-liams	B3	49.2	90.6	17,187	685	580
Arrowhead Farm	3	32.2	87.6	17,414	647	579

## SUSQUEHANNA CO. DHIA March 1991

Barn Name	Breed	Age When Fresh	Days Milked	Lbs. Milk	Lbs. Fat
Longacre Farm					
Christy	RH	8-08	305	22,935	945
Donna	RH	5-01	305	25,041	909
Melinda	RH	4-05	305	22,772	864
Francis Hibbard & Sons					
743	RH	7-09	305	20,507	862
173	RH	3-09	297	21,085	851
Daryl Button					
62	GH	5-01	305	24,689	865
Conboy Bros.					
May	GH	4-02	305	23,422	885
Robert Fearnley					
Clem	RH	10-07	305	26,429	853
Reuben Everitt					
Sarah	RH	6-04	305	22,103	921
Andrew Hubal					
Vivian	RH	4-09	305	22,684	877
Sandy	RH	3-02	305	24,223	880
Charles Clark					
19	GH	7-07	305	27,019	1021
James Wetter					
Fluffy	GH	8-08	305	26,018	971
Lisa	RH	10-04	305	23,464	860
Goer	RH	5-06	305	27,875	888
R Blaine Detwiler					
Squirt	GH	5-11	305	24,834	877
Country Heaven Farms					
Hazel	GH	6-08	305	26,945	957
John Castrogiovanni					
Laurel	RH	8-02	305	23,252	1046
Shirley	RH	7-05	305	28,219	1024
Cameo	RH	7-02	305	24,823	898
Sasha	RH	5-08	305	26,843	984
Thomas Traver					
Neddie	RH	3-11	305	29,600	956

## SULLIVAN CO. DHIA March 1991

Name	Breed	No. Cows	% Days In Milk	Lbs. Milk	Lbs. Protein	Lbs. Fat
Richard Higley	3	85.5	87.0	23,211	758	809
D&D						
Hottenstein	3	66.6	87.5	22,940	748	848
Raymond Nor-conk	3	41.6	88.4	22,028	693	760
Ronald Hem-bury	3	100.9	89.7	20,830	677	766

Name	Brd.	No. Cows	% Days In Milk	Milk Lbs.	Fat Lbs.	Protein Lbs.
Mount-Top-Vue Farm	B3	66.9	86.4	20,310	659	736
William B Hart	B3	113.6	88.3	18,156	600	726
Lambert Farms, Inc.	B3	178.8	91.2	18,345	595	666
Warburton Farms	B3	110.3	86.0	18,435	587	672
Car & Stanton	B3	57.0	88.5	18,412	576	658

## Completed Lactations

Name	Brd.	No. Cows	% Days In Milk	Milk Lbs.	Fat Lbs.	Protein Lbs.
Richard Higley						
BettLou	3	02/03		305	22,659	786
Ronald Hembury						
Nancy	3	07/01		305	23,078	772
Raymond Norconk						
Laura	3	08/05		305	23,537	766
Wonder	3	04/11		277	23,918	750
William B Hart						
151	3	07/03		305	23,872	746

## Columbia County DHIA April, 1991

### Rolling Herd Average

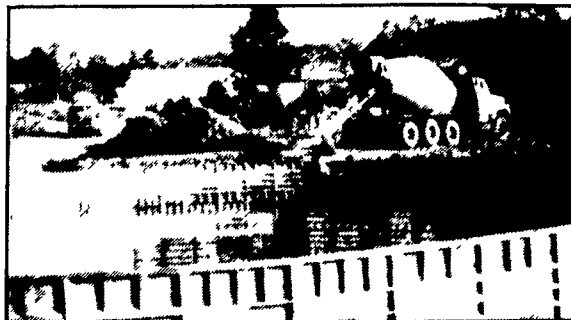
Name	Brd.	No. Cows	% Days In Milk	Milk Lbs.	Fat Lbs.	Protein Lbs.
Jan Jurbala	3	31.4	86.5	23,056	885	831
Richard Kriebel	B3	60.8	90.2	22,528	767	747
J Robert Book	B3	61.3	89.7	22,944	805	717
Barry D Wise	B3	47.2	94.5	21,448	783	704
Hunter Crest Farm	3	63.5	86.3	20,028	732	675
John W Turofs-ki	G3	35.2	88.7	20,796	786	665
Carl R Stack-house	G3	45.4	88.8	20,079	687	657
Shultz Bros	3	62.0	91.7	19,500	762	656
Duane E Shu-man	B3	35.3	90.5	19,456	694	651
Valley Stream Farm	B3	68.4	87.0	20,478	742	649
Lyons Den Dairy	B3	139.7	85.6	19,712	660	645
James L Kline	B3	26.6	89.2	19,024	659	601
Richard Yule	3	46.6	86.8	17,598	695	576
Craig Fester	B3	35.2	93.6	16,982	633	570

# POURED SOLID CONCRETE STORAGE SYSTEMS

17 Years Experience In Pouring Concrete Manure Pits!



Far Left: 1-Million Gallon Circular Manure Storage Tank



Construction Of Partially In-Ground Liquid Manure Tank - 400,000 Gallons

## CONCRETE PUMPING SERVICE AVAILABLE



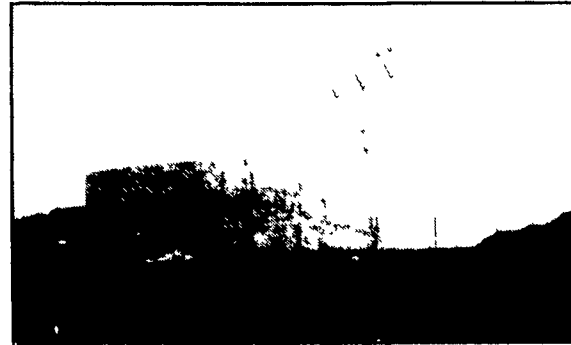
Mixer And Boom Trucks



92' Boom Placing Concrete



300' Long Manure Pit For Hog Confinement



Above Ground Liquid Manure Tank 425,000 Gallons



Placing Concrete On Site

Take the questions out of your new construction. Call Balmer Bros. for quality engineered walls.

All sizes available round or rectangular

Invest in Quality - It will last a lifetime.

# Balmer Bros.

CONCRETE WORK, INC.

243 Miller Road Akron, PA 17501

(717) 733-0353  
6:30 AM - 3:30 PM

(717) 859-2074  
After 6:00 PM