

'90 Ford F350 dual whl., short whl. base, cab & chassis, 351 auto., PB, PS, AM-FM, dual tanks, 10,000 miles w/balance of factory warranty, excellent condition. \$10,900. 717-733-2873

'90 Ford F150, 4x4, super cab, 302 EFI, 5 spd., PS, PB, air, AM-FM, dual tanks, lock-out hubs, 17,000 miles w/balance of factory warranty, excellent condition. \$13,500. 717-733-2873

'88 Ford F350 dual whl., 4x4 w/B' flatbed w/Class III hitch, 460 5 spd., PS, PB, AM-FM, dual tanks, 11,000 GVW, 37,000 miles, excellent condition. \$10,900. 717-733-2873

Keystone Peterbilt, Inc.

1467 Manheim Pike • P.O. Box 4396 • Lancaster, PA 17604

1-800-729-7383



717-299-6630

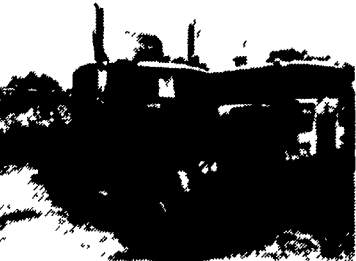
Trucks — New and Used



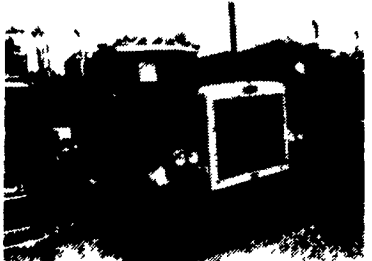
1984-1988 PETERBILT, 362 Single & Double Bunk, Cabover, Cat. & Cummins Power, 9 & 13 Speeds, Air Ride Susp., 22.5 & 24.5 8-Hole Wheels, Fleet Maintained.



1979 MACK R686S, 300 HP, 6 Speed, 34,000 Lb. Differential, Camel Back, PS, Air Ride Cab, Complete Wet Line, 20" Spoke.



1978 PETERBILT 359 (Short Hood), 36" Sleeper, NTC 350 Cummins, 13 Speed, Air Ride Susp., PS, AC.



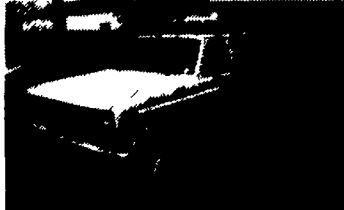
1984 PETERBILT 359 (Long Hood) 36" Sleeper, 240" Wh. Base, 400 Cat, 15 Speed, 3.70 Ratio, PS, Wet Line System.

1983 DODGE D350 CREW CAB



1 Ton, 318 V8, AT, PS, New Paint, 50,000 Miles \$4,800

1981 FORD F-350



V8, 4 Speed, PS, PB 10,000 GVW, Fiberglass Utility Body, 76,000 Miles, New Paint \$4,900

1986 CHEVY G-10 CARGO VAN



V6, Auto, PS, PB, 54,000 Miles \$5,400

"THE TRUCK PEOPLE" BOYER MOTOR CO.

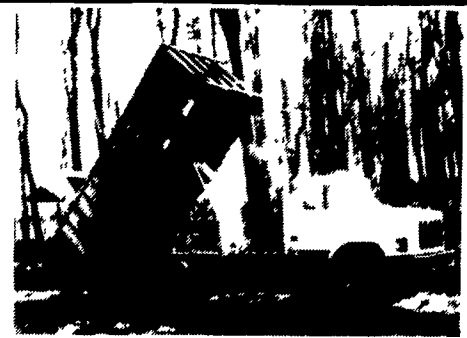
1065 S. State Street
Ephrata, PA 17522
717-738-1885 1-800-786-1835

• Air Push-Lock (x, x, x, x, x) • Caterpillar
• JIC • O-Ring
• Pipe • For-Seal
• Split Flanges
• Swivels
• Adapters

GOOD DEALS FROM OUR H O S E REELS WHILE YOU WAIT

WEATHERHEAD
★ 1 & 2 wire (1/4" - 1 1/4")
★ 4 spiral (1/4" - 1 1/4")
★ Suction (1 1/4" - 2")
★ Pressure Washer Flex 3000 PSI (1/4" - 3/4")
★ Power Steering 6 a.m. - 6 p.m.
After hours same #

BEARTOWN HYDRAULICS
★ Jacks ★ Cylinders ★ Pallet Trucks
Rt. 322, Midway Bet. Honey Brook & Blue Ball
(717) 354-5649 FAX (717) 355-0033

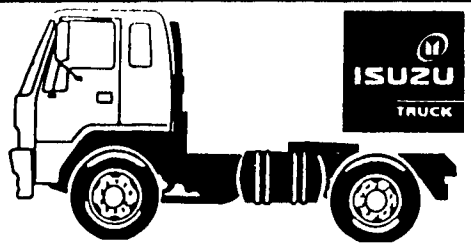


1978 International S2654

DT 466 Diesel (new, out-of-chassis rebuild), 13 speed, 18,000 front, 38,000 rear, AB, PS, 11x20 tires, equipped with new SCOTT 19 ft. silage and grain body with 2000 hoist.

TAFCO-SCOTT Distributors.
SUNNY ACRE SALES
(814) 742-8202

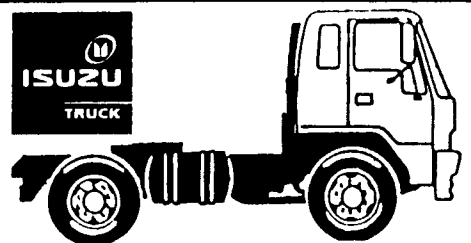
When it comes to TRUCKS We Mean Business!



1991 ISUZU NPR CAB & CHASSIS

INCLUDES: 126 HP Turbo Diesel Engine, Automatic Transmission, Power Steering & Brakes, Stereo w/Cassette, Tilt Wheel, 33 Gallon Fuel Tank, Tinted Glass, 13,250 GVW, More! Stk# 3095

\$16,992



1991 ISUZU NRR CAB & CHASSIS

INCLUDES: 154 HP Diesel Engine, 5-Speed Transmission, Power Steering & Brakes, AM/FM Radio, 33 Gallon Fuel Tank, Tilt Wheel, 3-Man Seating, 16,000 GVW, More! Stk# 3094

\$18,354

Tax & Tags Additional.

New Holland
ISUZU TRUCKS

Route 23, New Holland

800-642-8605

Ask For
Frank Kowalski
Randall Sinners
Curt Fairhurst

Ford
KELLER BROS.
Since 1921

Route 501
Lititz, Pa

(717) 626-2000

Recipient of the Distinguished SUPER STAR AWARD for EXCELLENCE IN CUSTOMER SATISFACTION

20 Minutes From Exit 20 or 21 Pa. Turnpike

ONE MILE NORTH OF LANCASTER AIRPORT ON ROUTE 501



1988 F150 4x4
6 cyl., auto/1 owner, cruise, dual tanks, 33,500 miles \$10,725



1989 FORD F250 SUPER CAB 4x4 XL
7.3L diesel, 5 spd., CR, red & silver, 46K miles, dual tanks \$16,888



1988 FORD F350 XLT SUPER CAB
dually 460, at, ac, 53,000 miles, dual tanks, pw, pdl., CR, stereo cass, full rear seat \$18,440



1988 CHEVY C3500 EXTENDED CAB
454, auto, ac, white, 42,500 miles, CR, tilt, full rear seat \$14,888



1989 FORD F350 DUMP
351, 5 spd., 10,246 miles, red \$15,940



1973 GMC SHORTBED STEPSIDE
6 cyl., 3 spd., 1 owner
49,500 original miles \$3,288



1988 FORD RANGER SUPER CAB 4x4
6 cyl., 4 spd., 34,000 miles, red & tan \$8,388



1989 FORD F350 CREW CAB
DUALY XLT, 351, 5 spd., 33k miles \$18,640



1987 BRONCO XLT 4x4
302, auto, air, bench seat, one owner,
40,000 miles \$14,157



1988 AEROSTAR CARGO VAN
4 spd., ac, 45,600 miles \$5,488



1989 FORD F250 4x4
302, auto/OD, ac, local trade, 36,000 miles, dual tanks \$13,498



1980 FORD F-150 XLT 4x4
V8, auto, ps, pb, dual tanks, 2/92 insp.,
1 owner, 54,000 org. miles, \$4,632

Extended Warranties Available Up To 36,000 Miles Or 3 Yrs. On Most Vehicles

Trades Cheerfully Accepted, On The Spot Financing To Qualified Buyers

THIS IS A SMALL PORTION OF OUR HUGE INVENTORY