

Dodge W350 pickup, 4x4 diesel, 1990, Chrysler warranty, fully equipped, LE trim, 10,000 miles Zartman Dodge, Litz, Pa 717-626-8551

'88 Ford XL HD F250, 460, 5 spd, PS, PB, air, cruise, AM-FM, 8,600 GVW, towing package w/cap, 14,000 miles, like new, \$8,975 717-733-2873

TIRONIE'S TARPS. SHIPPED ANYWHERE 1-800-874-2928

WANTED 12' Midwest Flatbed Body, with or without grain sides 215/696-1387

Our 52nd Year INTERNATIONAL TRUCKS Sales • Service • Parts

IVECO Parts, Service & Warranty

SALES - LEASING STATE INSPECTION ASE Certified Mechanics!

CENTRAL GARAGE INC.
S. 2nd St., Womelsdorf, Pa. 19567
215-589-4581

JD TRUCKS

Sales • Service • Parts

Cummins Service • Parts

— REPAIRS — All Make Trucks And Cars

NEW TRUCKS

1992 UD 1300, 5 Speed.....	13,000 GVW
1991 UD 1100, 5 Speed.....	11,000 GVW
1991 UD 1800.....	17,000 GVW
1991 International 4600LP	21,440 GVW
1991 International 4700.....	29,900 GVW
1990 International 900.....	32,900 GVW
1990 International 700 (2 in stock).....	29,000 GVW

USED TRUCKS

1988 International 1754, Reefer Unit.....	25,000 GVW	\$21,500
1987 International 400, Stake Body.....	17,640 GVW	\$17,000
1986 International 1654.....	20,500 GVW	\$8,500
1983 Mack (Jerr-Dan Rollback)	33,000 GVW	\$16,000
1978 Ford NL-600.....	19,500 GVW	\$4,000
1976 International Fleetstar, Automatic	35,000 GVW	\$7,500
1971 International Loadstar Dump.....	20,500 GVW	\$2,500

ASSORTED USED TRUCK BODIES FOR SALE!

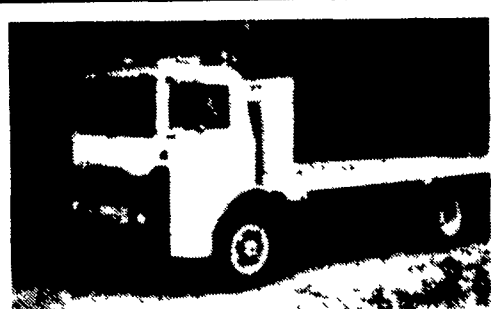
Bittner Boys, Inc.
Quality Chevy V8 Motors for Cars, Trucks and Boats. We Install And Deliver. 35 Years Of Experience 1 and 5 Year Warranty Avail- 717/762-7940

40' STORAGE TRAILER
w/electric hyd. lift gate. Must see to appreciate. Call **LIGHTHOUSE REHAB. CENTER** In New Holland, PA 717-354-0355



1980 VOLVO
F614, Diesel Eng., 6 Speed Transmission, Tag Axle, Dual Tanks, Good Rubber, 28' Flat Bed With Removable Sides
\$5,600
Phone (717) 922-3365

'69 Mack 10 wheeler dump 237 engine, 5 speed, recently overhauled
\$5,500
(717) 252-0850
after 8 p.m.



1978 MB Mack 35,000 G.V.W., 20 Ft. Steel Bed, Good Cond.
(717) 684-5895
After 6 P.M.

1990 DODGE CUMMINS TURBO DSL., 4x4, 350 LE, Loaded With Every Possible Option Including Sunroof, Bedliner, Topper, Local One Owner. Balance Of Factory Warranty, 11,000 Mi.
1991 VW Jetta GL, Dsl., 5 Spd., AC, Stereo Cassette, Sunroof, Fully Loaded, 10,000 Mi., One Owner \$11,495
1986 Dodge 250, V8, Auto, 31,000 Mi., \$5,900 Also '89 Sunline Camper Unit, \$2,500 Will separate must sell to settle estate.
1984 Ford F-150, 6 Cyl., 4 Spd., 40,000 Mi., Topper \$3,695
1987 Dodge Ram Charger LE, 4 WD, Loaded With All Options, 44,000 Mi \$8,995

BIRCHWOOD AUTO & TRUCK SALES
Main St., Schaefferstown, PA 717/949-6513

Dependable Used Trucks from Reliable People



84 IHC S1954, DT466, 5&2 Spd, P/S, A/B, 35,000 GVW, 20' Reefer With RD1-50 Thermo King Unit Selling Price \$17,900

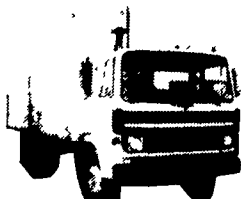
(2) 85 Ford LN7000, 3208 Cat, 5 & 2 Spd, P/S, 28,000 GVW, 16' & 18' Van With L/G, Will Sell Without Box Reduced to \$10,900



(5) 85 Frl/Lnr T/A Conv., LT10 300 & 6V92 D.D., 9 Spd., P/S, A/C, Some With Eng. Brakes



85 Fruehauf 42'x13' Reefer Van Trailer, Roll-Up Rear Door, Slider, SNWD-30 Thermo King 11x22 5R Tires, Very Clean Reduced to \$12,000 \$11,000



(4) 84 Mack Midliners, 5 Spd, P/S, 22' Van Bodies ... Reduced to \$8,900



Truck Bodies, Various Sizes, Reefer, Vans & Flats, Priced To Sell Call For Details



84-85 Frl/Lnr Conv. Sleepers, NTC 350, 9 Spd, P/S, A/C, Spring Susp Starting at \$18,500 \$17,500



85 Ford LN8000, 3208 Cat, 5 Spd P/S, A/B, 30,000 GVW, 22' Platform With L/G, Low Miles Reduced To \$14,500

MCDONNELL DOUGLAS TRUCK SERVICES

FOR MORE INFORMATION Call Ray Leed

717-569-2648 LANCASTER, PA

ROCK SOLID DUMP TRUCKS AT ROCK BOTTOM PRICES !!

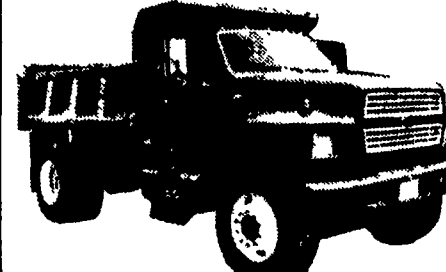
One of the **LARGEST** selections of Ford Heavy Trucks in Lancaster County!!

1990 F-800 #0-630



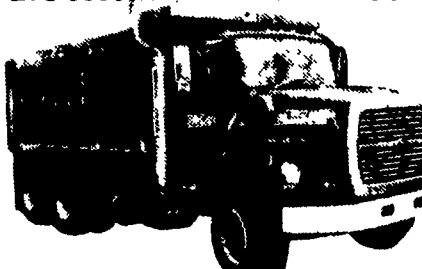
33 000 GVW 210 HP Diesel engine, five speed/two speed rear axle, air brakes, 10' Thiele Dump body **\$32,798**

1990 F-800 #0-516



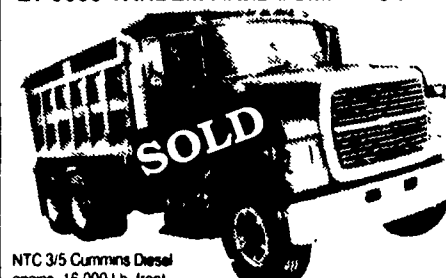
33 000 GVW 210 HP Diesel engine, five speed/two speed rear axle, air brakes, 10' Perfection Dump body **\$32,300**

1990 #0-473 LTS 9000 TRIAXLE DUMP TRUCK



NTC 3/5 Cummins Diesel, 18 000 Lb front axle 46 000 Lb rear axle, RTO-1170LL Transmission 17.6 J&J steel dump body **ONLY \$72,296 F.E.T. Inc.**

1990 #0-820 LT 9000 TANDEM AXLE DUMP TRUCK



NTC 3/5 Cummins Diesel engine 16 000 Lb front axle 46 000 Lb rear axle RTO 14608LL Transmission, air conditioning 15' Galton steel dump body **ONLY \$66,880 F.E.T. Inc.**

WOLF FORD

1484 Manheim Pike, Lancaster, PA

299-4331

"THE LEADER OF THE PACK"

Ford **TRUCKS**