

Southwest Virginia Livestock Summary

Wytheville, Va.

Tuesday, May 28, 1991

ALL TRENDS COMPARED TO LAST TUESDAY SLAUGHTER HOGS 19 HEAD - NO TRENDS REPORTED. BARROWS AND GILTS US 1-3, 200-250 LB. 51.25 SOWS US 1-3, 300-500 LB. 41.50

SLAUGHTER CATTLE 63 HEAD - NO TRENDS REPORTED.

SLAUGHTER COWS 58 HEAD COWS CUTTER & BONING UT. 1-3 52.00 - 57.00 BREAKING UT. & COMM. 2-4 53.00 - 60.00 CANNER AND LOW CUTTER 1-2 43.00 - 50.50

SLAUGHTER BULLS 5 HEAD BULLS Y.G. 1-2, 900-1300 LB. 67.00 Y.G. 1-2, 1300-1600 LB. 60.00 - 66.50 Y.G. 1-2, 1600 LBS. & OVER 63.50.

LAMBS TOTAL RECEIPTS 199 HEAD - NO TRENDS REPORTED SLAUGHTER LAMBS 121 HEAD SPRING CHOICE AND PRIME, 95-125 LB. 52.50 CHOICE, 85-125 LB. 51.00 FEEDER LAMBS 27 HEAD FEEDER LAMBS CHOICE AND FANCY, 70-85 LB. 55.00 CHOICE AND FANCY, 60-70 LB. 55.00 EWES & RAMS 51 HEAD EWES ALL GRADES 13.00 - 16.00 RAMS ALL GRADES 13.00 - 15.00.

FEEDER CATTLE 124 HEAD - NO TRENDS REPORTED STEERS

MEDIUM 1 MED & LARGE 2 200-300 115.00-126.00 100.00-109.00 300-400 108.00 92.00 400-500 105.00-110.00 30.00-100.00 500-600 96.00- 98.00 - 500-700 - 86.00- 90.00 700-800 - 82.00- 84.50 HOLSTEIN STEER MED & LARGE 2 700- 900 75.50.

HEIFERS MEDIUM 1 MED & LARGE 2 200-300 106.00-107.00 - 300-400 102.00-107.00 96.00-101.00 400-500 92.00-97.00 88.00-95.00 500-600-84.00-85.50 600-700 - 700-800 77.00 - BULLS MEDIUM 1 200-300 95.00-105.00 300-400 91.00- 94.00 400-500 - 500-600 88.00-93.00 600-700 84.00 COWS WITH CALVES AT SIDE 10 PAIR; M-1, 5-8 YR OLD 900-1050 LBS WITH CALVES 90-350 LBS \$670.00-845.00 PER PAIR. BABY CALVES RETURNED TO FARMS 50 HEAD NEWBORN TO 4 WK OLD \$80.00-200.00 MOSTLY \$110.00-180.00 PER CWT.

Lebanon Valley Livestock Auction

Fredericksburg, Pa.

Tuesday, May 28, 1991

Report Supplied by PDA

CATTLE 101 PDA...Compared with last weeks market: Slaughter cows strong to 2.00 higher on smaller supply. One Select sl. steer 71.25; One Choice Holstein 68.25, few Select 65.25-67.50, one Standard 64.25. One Choice Hol. heifer 70.00,

few Standard 56.75-62.25; two Choice Holsteins 64.75&65.75, few Select 61.00-62.00. Breaking Utility & Commercial sl. cows 53.75-57.25, few 58.00, Cutter & Boning Utility 52.25-56.75, few 57.25, Canner & Low Cutter 47.75-53.50, Shells down to 36.00. One Standard sl. bullock 65.00. One Yield Grade No. 1, 1850 lbs. sl. bull 65.75. Feeder Cattle: Few Large Frame No. 2, 545/770 lbs. Holstein heifers 53.00-64.00.

CALVES 184... Supply included an estimated 85 percent sold to return to farm...Vealers too few to trend. One Choice vealer 105.00, few Standard and Good 65/96 lbs. 70.00-87.00, Utility 50/75 lbs. 50.00-60.00. Farm Calves: steady to strong; Hol. Bulls No. 1, 85/120 lbs. 165.00-227.00, No. 2, 80/110 lbs. 125.00-200, few down to 102.00; No. 1, Hol. Heifers 80/200 lbs. 80.00-150.00, few 197.00. Few Beef cross 85/110 lbs. bulls and heifers 130.00-140.00.

HOGS 95...Barrows and gilts: small supply 1.50 lower. Few Lots US No. 1-2 220/260 lbs. 53.50-55.25, few lots 1-3 230/270 lbs. 52.85-53.75. Sows: small supply weak to 1.50 lower. US No. 1-3 320/630 lbs. sows 41.00-46.75, one 700 lbs. 40.00. Few Boars 41.25-41.50.

FEEDER PIGS 0...No market test - per head.

SHEEP 10...High Choice & Prime 52/90 lbs. spring slaughter lambs 54.00-59.00. One Slaughter sheep 10.00 - all Cwt.

GOATS 1...Large 40.00 - all per head.

Westminster Livestock Auction

Hagerstown, Md.

Tuesday, May 28, 1991

Report supplied by auction

SLAUGHTER COWS: 45 HD. STEADY PRICES. UTILITY 53.00-56.25; HIGH DRESSING TO 57.75; CANNERS 48.00-53.00; SHELLY 48.00 AND DOWN.

BULLS: 9 HD. PRICES HIGHER. YG#1 1100-2050 LBS. 67.00-73.00; YG#2 61.00-66.00.

FED STEERS: 20 HEAD. NO HIGH CHOICE OR PRIME. CHOICE 72.00-76.00; SELECT AND LOW CHOICE 68.00-72.00; SELECT 64.00-68.00; HIGH CHOICE HOLSTEIN 1500-1600 LBS. 68.00-71.00.

FED HEIFERS: FEW OFFERED. SELECT 800-1025 LBS. TO 65.00; HOLSTEINS TO 59.25.

VEAL CALVES: GOOD DEMAND. CHOICE 200-300 LBS. TO 110.00; 2 HOLSTEINS 415 AND 465 LBS. 92.00-94.50; CULLS 80-110 LBS. 77.00-85.00; 50-80 LBS. 65.00-75.00; WEAK/ROUGH 60.00 DOWN.

FARM CALVES: HOLSTEIN BULLS #1 85-120 LBS. 180.00-206.00; #2 130.00-180.00; 70-80 LBS. 120.00-170.00; HOLSTEIN HEIFERS 90-120 LBS. 120.00-152.00; BEEF X BULLS 80-120 LBS. 105.00-165.00.

BUTCHER HOGS: 65 HD. STEADY

PRICES. US#1-2 250 LBS. 55.00; US#1-3 215-260 LBS. 53.00-54.00; 260-280 LBS. 48.00-50.50; 300-400 LBS. 43.00-44.75; #2 AND 3 TO 40.75.

SOWS: 30 HD. .50 HIGHER. US#1-3 300-500 LBS. 43.50-45.50; 500-700 LBS. 45.00-47.25; #2 AND 3 40.00-42.50.

BOARS: FEW TO 40.75.

STOCK CATTLE: 65 HEAD. STEERS, NO LIGHTWEIGHTS. 400-600 LBS. 78.00-85.00; 600-700 LBS. 75.00-90.00; 700-900 LBS. 65.00-78.00; 900-1000 LBS. 65.00-77.00.

HEIFERS: 400-500 LBS. 80.00-94.00; 500-700 LBS. 70.00-82.00; 700-800 LBS. 65.00-71.00.

BULLS: 300-400 LBS. 90.00-101.00; 400-500 LBS. 80.00-91.00; 500-700 LBS. 68.00-80.00; 700-900 LBS. 68.00-73.00; 900-1050 LBS. 60.00-68.00.

LAMBS: 90 HEAD. PRICES LOWER. CHOICE 100-120 LBS. 56.00-64.00; 60-99 LBS. 58.00-66.00, FEW TO 75.00; 40-60 LBS. 60.00-70.00, FEW TO 77.00; MEDIUM 25-60 LBS. 43.00-50.00.

SHEEP: 30 HEAD 15.00-26.00; YEAR-LINGS 35.00-45.00.

GOATS: 74 HEAD. LARGE 55.00-90.00, FEW TO 102.00; MEDIUM 35.00-60.00; SMALL 16.00-32.00.

PIGS AND SHOATS: BY THE HEAD, 20-30 LBS. 27.00-35.00; 35-50 LBS. 40.00-49.00; 55-70 LBS. 60.00-66.00; BY THE POUND, 160-180 LBS. 59.00-63.00; 120-140 LBS. 63.00-65.00.

STOCK BOARS: 270 LBS. TO 42.25.

FREE DELVOTEST[®] SP or P OFFER

Introducing Delvotest[®] SP.

Buy a Delvotest[®] Block Heater before August 31, 1991, and get a **FREE Delvotest[®] SP MiniKit.**

Delvotest[®] SP is a simple, reliable, inexpensive test for detecting virtually all antibiotics which includes an increased sensitivity for sulfa residues in milk. You can set up a Delvotest[®] SP in 2 minutes. With the use of a timer, you can read the results at your convenience, up to 12 hours from the start of the incubation period. You run the test in your own milk room.

Why Delvotest[®] SP?

- Because you need to know your milk is free from all antibiotics, including sulfa residues.
- Because you need to know your milk is going into the tank truck, instead of down the drain.

Call Eastern Crown at 315-829-3505

EASTERN CROWN INC.
P.O. BOX 216, VERNON, NY 13476

"The Natural Solution"
For Lower Input Farming

AGRI-GRO

- Foliar Feed For Corn, Alfalfa And Other Crops. Great For Vegetables.
- Apply Along With Other Liquids.
- Helps Control Insects.
- Pennies Per Bushel Yields Dollars Per Acre!
- Sprayer Service Available

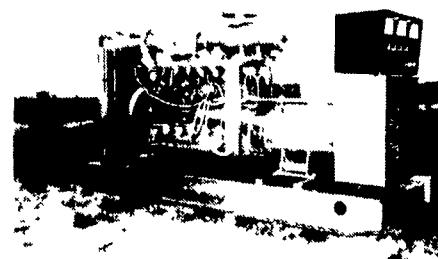
Farmers Everywhere Verify AGRI-GRO Works!

CALL NOW FOR INTRODUCTORY OFFER!

ERTH-RITE INC.

RD #1, Box 243, Gap, PA 17527
(717) 442-4171 • (800) 332-4171

MARTIN MACHINERY



GENERATORS

Sales ★ Service ★ Rentals
★ Complete Generator Systems
★ PTO ★ Portables ★ 2-1600 KW
"We Service It If You Have It And Sell It If You Need It"

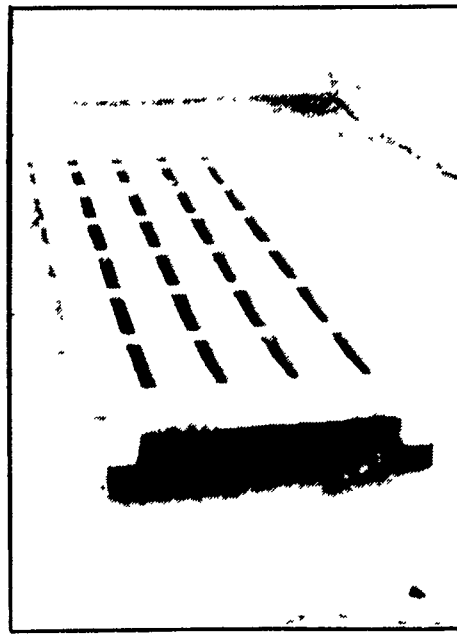
34 W. Mohler Church Rd.
Ephrata, PA 17522

Tel: 717-738-0300
Fax: 717-738-4329

HOG "WAFFLE SLATS"
7/8", 1" or 1-1/4" Slot

2' or 4' Hog "Waffle Slats" can be custom made to any length that is suitable for your barn.

2' Hog "Waffle Slats" only weigh 25 LBS. per sq. ft. so you can carry into existing barn.



Large percentage of opening keeps slats clean and dry.

"Waffle Slats" are uniform and easy to install

"Waffle Slats" can be undercut so it can replace existing steel slatted areas.

Contact Us For Complete Details On Heifer Cattle, Hog And Free Stall Barns

FAN SALE



DAYTON 24" 1/4 HP

Totally Enclosed Motor
4520 CFM

\$119⁹⁵
Assembled



- 24" • 1/2 Horsepower
- Ball Bearing Motor
- Variable Speed

8500 CFM

Sale **\$225⁵⁰**

Low 2.5 Amp Motor
Less Cost Per CFM

Brandt's Farm Supply



601 E. High Street, Elizabethtown 17022
(717) 367-1221



KEYSTONE CONCRETE PRODUCTS INC.

477 East Farmersville Rd.
New Holland, PA 17557
(717) 355-2361

