

New Holland Horses

New Holland Sales Stables
New Holland, PA
Monday, May 20, 1991
REPORT SUPPLIED BY AUCTION REGISTERED RECEIPTS OF 333 HEAD OF HORSES, MULES AND PONIES. MARKET STEADY.
DRIVING HORSES: 475.00-725.00.
RIDING HORSES: 475.00-850.00.
BETTER HORSES: 910.00-1250.00
REGISTERED HORSES: 875.00-1100.00.
LIGHTWEIGHT KILLERS: 435.00-550.00.
HEAVYWEIGHT KILLERS: 610.00-1070.00.
THIN HORSES: 165.00-400.00.
MARE PONIES: 55.00-215.00.
COLTS: 50.00-135.00.
GELDINGS: 55.00-215.00.
LARGER PONIES: 250.00-350.00.

Dewart Livestock

Dewart, PA
May 20, 1991
CATTLE 89...PDA...Compared with last Monday's market: Slaughter cows mostly 1.00 higher. Few Select slaughter steers 69.50-74.50. Couple Select Holstein heifer 67.75&67.75. Few Breaking Utility & Commercial slaughter cows 52.00-56.00, one 67.75, Cutter and Boning Utility 52.00-57, couple 58.00, Canner and Low Cutter 48.00-51.25, Shells down to 45.00. Few Yield Grade No. 1, 1165/1800 lbs. sl. bulls 61.00-70.00. Feeder Cattle: Few Large Frame No. 1, 525/640 lbs. steers 66.00-70.00.
CALVES 140...Few Utility 50/80 lbs. vealers 70.00-75.00. FARM CALVES: No. 1, 85/130 lbs. Holstein bulls 180.00-207.50; No. 2, 75/105 lbs. 150.00-190.00, few down to 90.00; No.1, 85/110 lbs. Holstein heifers 150.00-190.00. Few Beef cross 90/135 lbs. heifers 132.50-175.00.
HOGS 40...Few Lots US 1-3 215/250 lbs. barrows and gilts 53.00-55.50. US 1-3 330/540 lbs. sows 45.00-47.50. One Boar 40.00.
FEEDER PIGS 16...Lot US No. 1-3 30 lbs feeder pigs 35.00 --- all per head.
SHEEP 6...Few Choice 40/55 lbs. Spring sl. lambs 54.00-61.00 - all cwt
GOATS 6...Few Small Kids 15.00-32.00 - per head.

Belleville Livestock

Belleville, PA
May 22, 1991
CATTLE 88... PDA ...Compared with last Wednesday's market: Slaughter cows 1.50 to 3.00 higher. Breaking Utility and Commercial slaughter cows 55.50-59.00, one 60.25, Cutter and Boning Utility 53.00-59.00, Canner and Low Cutter 49.00-52.50, Shells down to 45.00. Couple Yield Grade No. 1, 1195 lbs. slaughter bulls 61.50&69.85. Feeder Cattle: Few Medium Frame No. 1, 375/690 lbs. steers 94.00-101.00.
CALVES 92...FARM CALVES: Holstein bulls, No. 1, 85/125 lbs. 170.00-202.00, one 211.00, No. 2, 80/120 lbs. 130.00-165.00. Few No. 1, 75/100 lbs. heifers 142.50-165.00. Few Beef cross 70/100 lbs. bulls and heifers 95.00-181.00.
HOGS 202...Barrows and gilts: .50 to 1.00 lower. US No. 1-2 215/245 lbs. 53.85-55.75, 1-3 170/205 lbs. 46.50-51.75. US No. 1-3 310/620 lbs. sows 44.00-47.50, few Medium 225/410 lbs. 35.00-41.50. Few Boars 35.00-41.00.
FEEDER PIGS 165...US No. 1-3 20/35 lbs. feeder Pigs 31.00-42.00, 40/60 lbs. 43.00-54.00 --- all per head.
SHEEP 52...Spring slaughter lambs: Few Choice 20/40 lbs. spring slaughter lambs 75.00-85.00, 50/100 lbs. 63.00-72.00. Slaughter sheep 14.00-24.00 - all cwt.
GOATS 12...Few Large 41.00-84.00, few Small Kids 20.00-23.00 --- all per head.
HOLSTEIN DAIRY COWS - \$770.00-\$1250.00 --- PER HEAD.

Leesport Livestock

Leesport, PA
May 22, 1991
CATTLE 202...PDA... Supply included 19 head feeder cattle and 105 head fat steers and heifers ...Compared to last Wednesday's market: Slaughter steers 1.50 to 2.00 lower; Cows uneven, mostly steady. Choice 1000/1400 lbs. sl. steers 74.00-76.25, Select 68.25-74.75, few Standard 66.50-69.50; few High Choice & Prime 1400/1500 lbs. Holsteins 70.00-71.75, Choice 1280/1500 lbs. 66.75-69.50, Select 64.25-67.50, few Standard 60.25-64.50. Few Choice 1000/1160 lbs. sl. heifers 73.50-75.50, few Select

63.25-67.50, few Standard 56.50-60.00! Breaking Ut & Commercial sl. cows 54.00-57, one 58.75, Cutter & Boning Utility 52.75-56.75, one 57.50, Canner & low Cutter 44.75-53.50, Shells down to 40.00. Few Choice Holstein bullocks 64.25-68.75, few Standard 61.75-65.50. Few Yield Grade No. 1, 1375/1815 lbs. sl. bulls 62.00-68.00, couple No. 2, 1150&1240 lbs. 56.50&58.75. Feeder Cattle: Few Medium & Large Frame No. 1-2, 485/510 lbs. steers 101.00-109.00, few Large No. 2, 535/545 lbs. 88.00-90.00. Few Medium Frame No. 1, 530/570 lbs. heifers 73.00-77.00.
CALVES 158...Couple Choice vealers 101.00&115.00, one Prime 114.00, one Good 95.00, Standard and Good 70/110 lbs. 72.50-86.00. Farm Calves: No. 1, Holstein Bulls 85/125 lbs. 187.50-217.50, No. 2, 80/125 lbs. 162.50-197.50, few 105.00. No. 1, Hol. Heifers 85/125 lbs. 155.00-187.50. Few Beef Cross 70/110 lbs. bulls and heifers 135.00-187.50, few 140/285 lbs. 110.00-142.50.
HOGS 245...Barrows and gilts: 1.00 to 3.00 lower. US No. 1-3 220/255 lbs. 52.00-53.00, 2-3 220/260 lbs. 50.00-52.00, few 2-4 265/290 lbs. 41.10-44.75, few 1-3 205/210 lbs. 49.85-50.85. SOWS: steady to weak. US No. 1-3 270/675 lbs. sows 42.00-46.00. Boars (all weights) 39.25-41.50.
FEEDER PIGS 159...Lot US No. 1-3 44 lbs. feeder pigs 130.00, 25/30 lbs.

112.00-150.00, few 40/45 lbs. 98.00-100.00 --- all per hundredweight; No. 1-3 15/20 lbs. 22.00-26.00 per head.
SHEEP 86...Spring slaughter lambs: Choice 35/90 lbs. spring sl. lambs 60.00-70.00, few 20/30 lbs. 72.50-90.00, Good 25/55 lbs. 50.00-60.00. Slaughter sheep 12.00-22.00 - all cwt.
GOATS 60...Large 44.00-63.00, few to 125.00, Medium 30.00-45.00, Large Kids 30.00-46.00, few Small Kids 23.00-26.00 --- all per head.

SELECT & CHOICE 2-3 950-1100 LBS. 71.00-74.00 SELECT 2-3 850-1050 LBS. 67.00-71.00
COWS: BREAKING UTILITY & COMMERCIAL 2-4 48.00-55.00 CUTTER & BONING UTILITY 1-3 47.00-52.00 CANNER & LOW DRESSING CUTTER 1-2 41.00-45.00
BULLS: YG 1-2 1200-2250 LBS 60.00-70.00
CATTLE 214
CB 75.00-76.50 CC 75.00-77.00 CF 75.00-76.50 CG 75.00-76.50 CJ 68.00-71.00 CK 69.00-72.00 CS 74.00-75.50 CT 74.00-76.00 CV 74.00-75.50 CW 74.00-75.50 CX 67.00-70.00 CZ 68.00-71.00 DB 48.00-53.00 DC 49.00-55.00 DD 47.00-52.00 DE 42.00-45.00 DF 41.00-44.00 DH 60.00-70.00 DJ 60.00-70.00

Peoria Cattle

Peoria, IL
May 20, 1991
CATTLE: 800 TRADING FAIRLY ACTIVE. COMPARED WITH LAST MONDAY SLAUGHTER STEERS AND HEIFERS 1.00 LOWER. COWS AND BULLS MOSTLY STEADY. SUPPLY MAINLY SELECT TO AVERAGE CHOICE SLAUGHTER STEERS AND HEIFERS WITH ABOUT 10% COWS.
SLAUGHTER STEERS: CHOICE 2-4 1050-1350 LBS. 75.00-77.00 MIXED SELECT & CHOICE 2-3 1000-1300 LBS. 72.00-75.00 SELECT 2-3 950-1200 LBS. 68.00-72.00
HOLSTEINS: MIXED SELECT & CHOICE 2-3 1100-1350 LBS. 68.00-72.00
SLAUGHTER HEIFERS: CHOICE 2-4 1000-1200 LBS. 74.00-76.00 MIXED

Peoria Sheep

Peoria, IL
May 20, 1991
SHEEP: 75 TRADING MODERATE COMPARED WITH LAST WEEK'S LIMITED RECEIPTS, FEW SALES OF SLAUGHTER LAMBS 3.00 TO 4.00 LOWER
SPRING SLAUGHTER LAMBS: FEW SALES CHOICE AND PRIME 90-105 LBS. 53.00- 55.00

FOR SALE SHAVINGS & SAW DUST

★ Delivered To Your Location
★ Year Round Supply
★ Excellent for Dairy or Horses
Call For Price To Your Area
717-653-5935
J.D. Martin inc.
Mt. Joy, PA



Every Wednesday
At 11:00 A.M.

GOOD'S AUCTION
111 Maple Ave.
Leola, PA 17540
717-656-8911
717-656-9554

12 Purebred Hampshire Boars
10 40 lb. Reg. Hampshire Gilts
to be sold at June 5th
FEEDER PIG SALE
for Four Oaks Farm
(Lee Bixler Family).
See complete details page B41.

**NEW HOLLAND SALES STABLES INC.
THE ACTION AUCTION**

REG. HEIFER SALE
SAT., JUNE 1 - 10 A.M.
HORSE SALE
FRI., JUNE 14 - 7:00 P.M.
TACK 6 P.M.
HORSES HITCHED
12 NOON

LIVESTOCK IS OUR ONLY BUSINESS

MONDAY

SLAUGHTER HOGS



EARLY BIRD HOG SALE
8:00 A.M.

Sell Your Hogs At New Holland Sales Stables, Inc.
See them weighed, sold and pickup your check.

10:00 AM



HORSES
MULES



1:30 PM

BEEF SALE



SHEEP
GOATS



CALVES

WEDNESDAY

HEIFER SALE
11:00 AM

COW SALE 12:00 NOON

HEIFERS
BULLS

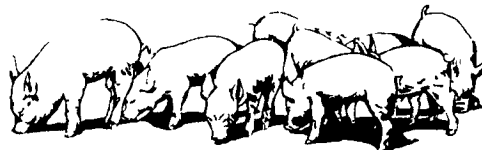


COWS

We have the usual run of 50 to 100 Heifers, all ages. Loads of fresh cows and springers from our regular shippers. Also some local fresh cows and springers.

1:30 P.M.

FEEDER PIG SALE



Pigs are accepted after 6:30 A.M. State graded from 8 to 12 Dairy Barn and Feeder Pig Barn are cleaned and disinfected weekly for your protection.

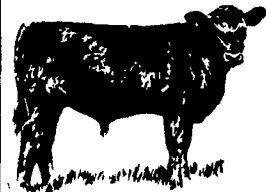
THURSDAY

Beef Auction
10:00 A.M.

BULLS
STEERS
BEEF COWS



1:00 P.M.
STOCKERS
&
FEEDERS



12:30 P.M.

SHEEP
GOATS
CALVES



NEW HOLLAND SALES STABLES, INC.

12 Miles East of Lancaster Off Route 23, New Holland, Penna.

MANAGERS

Norman & David Kolb - 717-397-5538

Field Representatives

Luke Eberly - 215-267-6608 738-1865
Homer Eberly - 215-267-3047
Ron Ranck - 717-656-9849

Sale Barn Office Manager
Roger Floyd - 717-354-4341
FAX # 717-355-0706

Order Buyer
Paul Good - 215-445-6662