

Pa. Holstein Association Announces Schedule

STATE COLLEGE (Centre Co.) — The Pennsylvania Holstein Association recently announced their schedule of events for the year.

JUNE 9: 11:30 a.m., the South Centrl Young Dairymen's Organization Picnic at the Logan Bower Farm, in Blain.

JUNE 23-26: National Holstein Convention, Sioux Falls, S.D.

JULY 1-2: Pa. PDCA Judging School, Lawrence and Butler counties to be host.

JULY 8-9: Wester Junior School, host Blair County.

JULY 10-11: Eastern Junior Judging School, Susquehanna County.

JULY 13: Pennsylvania Holstein State Picnic, Evergreen Farms, Spruce Creek.

JULY 16: 10:30 a.m., Chester County Holstein Field Day, at Ben Kauffman Farm.

JULY 17: 10 a.m., Lycoming County Holstein Show, Fairgrounds, Hughesville.

JULY 18: 10 a.m., Erie County Holstein Show, Fairgrounds, Waterford.

JULY 18: 9:30 a.m., Lancaster County Holstein Show, Fairgrounds, Quarryville.

JULY 18: 7 p.m., Lebanon County Field Day, Ju-Vindale Farm, Myerstown.

JULY 22: 10:30 a.m., Pa. Holstein Board of Directors meeting, State College.

JULY 26: 6:30 p.m., Western Championship Show, Myersdale.

JULY 26: York County Holstein Show, York.

AUGUST 1: 10 a.m., Franklin County Field Day, Meyers

Brothers, St. Thomas.

AUGUST 2: 7 p.m., Lycoming County Holstein Sale, Fairgrounds, Hughesville.

AUGUST 2: Lebanon County

Holstein Show, Fairgrounds, Lebanon.

AUGUST 9: 10:30 a.m., Clinton County Holstein Show, Fairgrounds, Mackeyville.

AUGUST 10: 9:30 a.m., South Central Championship Show, Shippensburg.

AUGUST 13-15: Ag Progress Days, State College.

AUGUST 15: 7:30 p.m., Washington County Holstein Show, Fairgrounds, Washington.

AUGUST 16: 11 a.m., Bucks

(Turn to Page A38)

Check-In Deadline: August 16, 1991 - 6:00 p.m.
Hay & Straw: Exhibitors Furnish Their Own

NORTHEAST PA CHAMPIONSHIP SHOW

Date: August 20, 1991
Time: 9:30 a.m.
Place: Tioga County Fairgrounds, Whitneyville
Send Entries To: Dr. David Reese, RD 3 Box 246, Wellsboro, PA 16901
Entry Deadline: August 6, 1991
Entry Fee: \$ 5.00
Late Entry Fee: \$10.00
Judge: Glenn Tripp
Chairman: Dr. David Reese - (607)733-3154
Check-In Deadline: August 19, 1991 - 6:00 p.m.
Hay & Straw: Exhibitors Furnish Own

EASTERN PA CHAMPIONSHIP SHOW

Date: August 22, 1991
Time: 10:00 a.m.
Location: Kutztown Fairgrounds, Kutztown
Send Entries To: Warren Buckman, III RD 2 Box 242 Perkaspie, PA 18944
Entry Deadline: August 8
Entry Fee: \$ 6.00
Late Entry Fee: \$ 15.00
Substitution Fee: \$ 10.00
Judge: John Burket
Chairman: Warren Buckman, III, (215)795-2178
Check-In Deadline: August 21, 1991 - 6:00 p.m.
Hay & Straw: Exhibitors Furnish Their Own

PA HOLSTEIN CHAMPIONSHIP SHOW

Date: September 6, 1991
Time: 9:30 a.m.
Location: Agricultural Arena, Penn State
Send Entries To: PA Holstein Association State College, PA 16801
Entry Deadline: August 24, 1991
Entry Fee: \$ 15.00 (Adults & Juniors)
Late Entry Fee: \$ 25.00
Judge: Richard Lewis
Check-In Deadline: September 5, 1991
Hay & Straw: Exhibitors Furnish Their Own

CHAMPIONSHIP SHOW SCHEDULE

WESTERN PA CHAMPIONSHIP SHOW

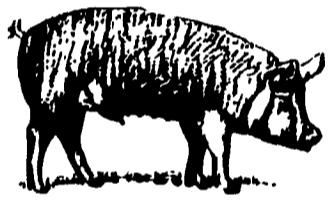
Date: July 26, 1991
Time: 6:30 p.m.
Place: Somerset County Fairgrounds, Meyersdale
Send Entries to: Michael Stutzman, RD 2 Box 214 A Friedens, PA 15541
Entry Deadline: July 11, 1991
Entry Fee: \$ 6.00
Late Entry Fee: \$ 10.00
Judge: Dale Olver
Chairman: Michael Stutzman, (814)443-2587
Check-In Deadline: July 25, 1991 - 6:00 p.m.
Hay & Straw: Exhibitors Furnish Their Own

SOUTH - CENTRAL PA CHAMPIONSHIP SHOW

Date: August 10, 1991
Time: 9:30 a.m.
Place: Shippensburg Fairgrounds, Shippensburg
Send Entries To: Franklin County Extension Service 191 Franklin Farms Lane Chambersburg, PA 17201
Entry Deadline: July 29, 1991
Entry Fee: \$ 8.00
Late Entry Fee: \$ 15.00
Judge: Jason Myers
Chairman: George Cashell - (717)369-3374
Check-In Deadline: August 9, 1991
Hay & Straw: Exhibitors Furnish Their Own

CENTRAL PA CHAMPIONSHIP SHOW

Date: August 17, 1991
Time: 6:30 p.m.
Place: Huntingdon County Fairgrounds, Huntingdon
Send Entries To: John Foster, Jr., RD 1 Box 110 Petersburg, PA 16669
Entry Deadline: August 5, 1991
Entry Fee: \$ 5.00
Late Entry Fee: \$ 10.00
Judge: Oren Bender
Chairman: John Foster, Jr. (814)667-3567



BEFORE IT GOES TO WORK ON YOUR FARM IT'S PROVEN TO WORK FOR OTHERS!



Turnkey Systems & Everything You Need To Succeed!



300 Sow Feeder Pig Unit

2000 Head Swine Finishing Unit



TRI-COUNTY SWINE UNITS FEATURE:

- **WINE-BLAST** Stainless Steel Feeders, Gang Slats & Proctor Hydraulic Crates
- **aerotech**® Engineered Ventilation Systems With Certified System Design
- **GSI** Galvanized Feed Bins, Flex-Flow Augers And Automatic Sow feeding

Swine Operations Offer An Opportunity For Full Or Part-Time Income And Solid Return On Investment. Contracts And Financing Available. CALL FOR DETAILS!



TRI-COUNTY

CONFINEMENT SYSTEMS INC.

608 E. Evergreen Rd., Lebanon, PA 17042

Ph: 717-274-3488

Hours: Mon.-Fri.
7:00 to 4:30;
Sat. 8:00 to 12:00