



Hog Markets

Peoria Hogs

Peoria, IL
May 23, 1991

HOGS: 1600 TRADING MODERATE. BARROWS AND GILTS STEADY TO WEAK COMPARED WITH WEDNESDAY.

US 1-3 220-250 LBS. 56.00-56.50 2-3 230-260 LBS. 55.50-56.00 260-280 LBS. 53.50-55.50

SOWS: UNDER 500 LBS. STEADY TO .50 LOWER, INSTANCES 1.00 LOWER. OVER 500 LBS. FULLY 2.00 LOWER 15%

US 1-3 325-500 LBS. 46.50 500-650 LBS MOSTLY 47.00, SOME 47.50

BOARS: OVER 350 LBS. 42.00 UNDER 350 LBS. 45.00

HOGS FOR THE WEEK: BARROWS AND GILTS CLOSED MOSTLY STEADY. SOWS CLOSED .50-1.00 LOWER. ABOUT 21%

HOG 214 HC 56.00-56.50 HD 56.00-56.50 HE 56.00-56.50 HI 56.00-56.50 HJ 56.00-56.50 HK 56.00-56.50 HQ 55.50-56.00 HR 54.50-55.50 VV 46.50-46.50 WW 46.50-46.50 XX 47.00-47.50 YY 47.00-47.50 ZZ 42.00-42.00

State Graded Feeder Pig Sale

at Westminster
Livestock Auction
May 17, 1991

1070 PIGS. 2 WEEKS AGO 499; PRICES GENERALLY 10.00-20.00 PER HUNDRED LOWER EXTREMES 30.00 LOWER ALL PIGS WEIGHED ON ARRIVAL AND SOLD BY THE HUNDREDWEIGHT.

GRADE 1: 25 HEAD 38 LBS. 130.00; 256 HEAD, 43-49 LBS 118.00-124.00; 223 HEAD 51-55 LBS. 103.00-120.00; 38 HEAD 60 LBS. 111.00; 86 HEAD 61-68 LBS. 101.00-105.00; 12 HEAD 70 LBS. 98.00.

GRADE 1 AND 2: 58 HEAD 29-37 LBS 118.00-124.00; 151 HEAD 43-49 LBS 90.00-115.00; 97 HEAD 50-57 LBS. 94.00-102.00; 45 HEAD 64-68 LBS. 92.00-97.00; 12 HEAD 75-90 LBS. 73.00-77.00.

GRADE 2: 37 HEAD 33-45 LBS. 97.00-110.00; 7 HEAD 68 LBS. 80.00. NEXT GRADED SALE FRIDAY, JUNE 7.

New Holland Hogs

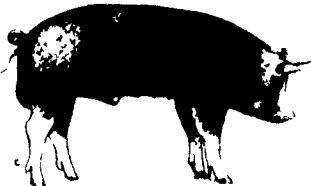
May 20, 1991

TODAY 730
LAST MONDAY 746
LAST YEAR 1286

TREND: Compared to last Monday barrows and gilts 1.00-1.25 higher.

BARROWS AND GILTS: US 1-2 210-255 lb 56.50-57.50, One lot 57.75. US 1 215-235 lb 58.00-58.50, One lot 225 lb 61.75.

US 1-3 210-250 lb 55.00-56.00, Couple lots 54 25-54.75



Walter M. Dunlap and Sons offers all cattle feeders two marketing days - Give us a call for advice and marketing conditions.

MONDAYS OR WEDNESDAYS

Consign With Us - For The Marketing Edge

Consign Your Beef Cows
Mondays and Wednesdays

No Waiting To Unload - Good Weight Conditions

Next Feeder Cattle Sale
Friday, May 31 - 11:00 A.M.

Walter M. Dunlap and Sons
Lancaster Stockyards
Tel. (717) 397-5136

An Old Line Commission Firm Keeping
Abreast With The Times

Indiana Hogs

May 23, 1991

BARROWS AND GILTS: STEADY TO WEAK. DEMAND MODERATE TO GOOD. PLANTS: UNEVENLY STEADY TO INSTANCES .50 HIGHER.

COUNTRY: PLANTS: US 1-2 220-260 LBS. 53.50-55.50, 54.50-56.50, FEW TO 57.00. FEW UP TO 56.00. 210-220 LBS. 51.50-53.50

US 1-3 220-260 LBS. 52.50-54.25

SOWS: STEADY.

US 1-3 300-500 LBS. 40.00-44.00

500-650 LBS. 43.00-46.00

New Holland Feeder Pigs

May 15, 1991

TODAY 763
LAST WEDNESDAY 639
LAST YEAR 655

TREND: Compared to last Wednesday feeder pigs very uneven, averaging steady. Supply included around 225 head sold for slaughter. All pigs weighed on arrival and sold by the hundred weight.

GRADE HEAD WEIGHT PRICE US 1-2 34 31-39 119.00-122.00, 16 38 136.00. 84 40-45 125.00-132.00, 63 47-48 116.00-120.00. 49 51-57 124.00-126.00. 12 63-68 98.00-110.00.

US 2 72 30-39 110.00-118.00. 51 42-48 108.00-120.00. 22 52-59 114.00-116.00. 8 76 96.00.

US 2-3 84 33-36 102.00-108.00.

SLAUGHTER 70 17-26 165.00-180.00. 54 20-29 115.00-135.00. 87 30-55 98.00-124.00.

Shenandoah Valley Livestock

Harrisonburg, Va.
May 18, 1991

Report supplied by auction

STEERS: M&L-1 300-500 LBS. 110.00-125.00, 500-700 LBS. 92.00-107.00, 700-900 LBS. 76.00-84.50; HOLSTEIN 300-1000 LBS. 61.50-95.00.

S-L&M&L-2: 300-500 LBS. 100.00-110.00; 500-700 LBS. 88.00-102.00.

FEEDER BULLS: 300-500 LBS 95.00-106.00, 500-700 LBS. 84.00-96.00.

S-L&M&L-2 300-500 LBS. 84.00-86.00, 500-700 LBS. 75.00-78.00.

HEIFERS: 300-500 LBS. 88.00-98.00; 500-700 LBS. 86.00-91.00; 700-800 LBS. 76.00-82.00.

S-L&M&L-2: 300-500 LBS. 85.00, 500-700 LBS. 83.00.

STOCK COWS: LARGE COWS WITH CALVES 1200.00-1400.00 PAIR; BABY CALVES 100.00-195.00 BY HEAD, OVER 100 LBS. BY WGHT. 165.00-195.00.

SLAUGHTER COWS: UTILITY AND COMMERCIAL 2-4 50.00-55.75; CANNERS AND CUTTERS 1-3 47.00-50.50.

SLAUGHTER BULLS: 1&2 63.50-69.00.

LAMBS: BLUE O HIGH CHOICE AND PRIME 63.55; RED O CHOICE 67.75; FEEDER LAMBS CHOICE 66.00; SLAUGHTER EWES 12.00-19.50.

SOWS 1-3: 47.75.

Pa. Grain

Monday, May 20, 1991
Report supplied by PDA

COMPARED WITH LAST MONDAY'S MARKET FOR SOUTHEASTERN, CENTRAL, AND SOUTH CENTRAL PA: CORN MOSTLY STEADY; WHEAT STEADY TO .06 LOWER; BARLEY STEADY TO WEAK; OATS AND EAR CORN STEADY; SOYBEANS UNEVENLY STEADY.

SOUTHEASTERN PENNSYLVANIA

CORN NO. 2-Y RANGE 2.65-2.90, AVERAGE 2.77, *CONTRACT FOR HARVEST 2.42-2.61; @WHEAT NO. 2 RANGE 2.70-2.89, AVERAGE 2.80, *CONTRACT FOR HARVEST 2.78-2.99; BARLEY NO. 3 RANGE 1.80-2.25, AVERAGE 1.96, *CONTRACT FOR HARVEST 1.70-1.85; OATS NO. 2 RANGE 1.30-1.60, AVERAGE 1.46, *CONTRACT FOR HARVEST 1.10-1.25; SOYBEANS RANGE 5.37-5.70, AVERAGE 5.60, *CONTRACT FOR HARVEST 5.50-5.75; FEW REPORTED GR. SORGHUM #2 RANGE 2.30, AVERAGE 2.30, *CONTRACT FOR HARVEST 2.20, *+BUCKWHEAT *CONTRACT FOR HARVEST 8.15; EAR CORN RANGE 74.00-82.00, AVERAGE 77.77.

SOUTH CENTRAL PENNSYLVANIA

CORN NO. 2-Y RANGE 2.60-2.80, AVERAGE 2.70; @WHEAT NO. 2 RANGE 2.30-2.65, AVERAGE 2.51; BARLEY NO. 3 RANGE 2.00-2.20, FEW REPORTED 1.85, AVERAGE 2.09; OATS NO. 2 RANGE 1.25-1.35, FEW REPORTED 1.50, AVERAGE 1.35; SOYBEANS NO. 1 RANGE 5.50-5.63, AVERAGE 5.57; EAR CORN RANGE 65.00-80.00, AVERAGE 72.50.

SOUTHEASTERN, CENTRAL & SOUTH CENTRAL SUMMARY

CORN NO. 2-Y RANGE 2.64-2.85, AVERAGE 2.76; @ WHEAT NO. 2 RANGE 2.40-2.89, AVERAGE 2.66; BARLEY NO. 3 RANGE 1.80-2.25, AVERAGE 2.00; OATS NO. 2 RANGE 1.25-1.60, AVERAGE 1.42; SOYBEANS NO. 1 RANGE 5.37-5.80, AVERAGE 5.60; EAR CORN RANGE 70.00-79.00, AVERAGE 75.78.

CENTRAL PENNSYLVANIA

CORN NO. 2-Y RANGE 2.70-2.85, AVERAGE 2.78; @WHEAT NO. 2 RANGE 2.40-2.85, AVERAGE 2.62; BARLEY NO. 3 RANGE 1.85-2.25, AVERAGE 1.99; OATS NO. 2 RANGE 1.30-1.50, AVERAGE 1.43; SOYBEANS NO. 1 RANGE 5.40-5.80, AVERAGE 5.62; EAR CORN RANGE 70.00-79.00, AVERAGE 74.75.

WESTERN PENNSYLVANIA

CORN NO. 2-Y RANGE M 2.40-2.81, AVERAGE 2.61; @WHEAT NO. 2 RANGE 2.50-2.61, AVERAGE 2.57; BARLEY NO. 3 RANGE 1.90, AVERAGE 1.90; OATS NO. 2 RANGE 1.25-1.60, AVERAGE 1.50; SOYBEANS NO. 1 FEW REPORTED 5.60, AVERAGE 5.60; EAR CORN RANGE 50.00-66.00, AVERAGE 58.00.

MONTH AGO

CORN NO. 2-Y 2.77; @WHEAT NO #2 2.65; BARLEY NO. 3 2.05; OATS NO 2 1.43; SOYBEANS NO. 1 5.74; EAR CORN 75.81

YEAR AGO

CORN NO. 2-Y 3.11; @WHEAT NO #2 3.67; BARLEY NO. 3 2.13; OATS NO. 2 1.66; SOYBEANS NO 1 5.89; EAR CORN 85.14.

Regional Hay

May 20, 1991
Eastern, Pa.

HAY & STRAW MARKET FOR EASTERN PA - (ALL HAY NO. 2 AND BETTER, PRICES PAID BY DEALERS AT THE FARM & PER TON). HAY & STRAW SLOW, STEADY; SOME NEW CROP ON THE MARKET.

ALFALFA 70.00-100.00, MIXED HAY 50.00-90.00; TIMOTHY HAY 50.00-70.00; STRAW 40.00-70.00, FEW 80.00; MULCH 20.00-35.00

SUMMARY OF LANCASTER CO. HAY AUCTIONS FOR WEEK ENDING 5/17/91. PRICES PER TON: LOADS: 141 HAY, 44 STRAW, AND 16 EAR CORN

ALFALFA 84.00-159.00; MIXED HAY 56.00-145.00; TIMOTHY HAY 60.00-130.00; STRAW 68.00-106.00; EAR CORN 82.00-93.00.

SUMMARY OF CENTRAL PA. HAY AUCTIONS FOR WEEK ENDING 5/17/91. PRICES PER TON: LOADS: 129 HAY, 13 STRAW & 9 EAR CORN

ALFALFA 65.00-112.50, MIXED HAY 40.00-95.00; TIMOTHY HAY 40.00-82.50; STRAW 60.00-80.00, MULCH 72.50-85.00.

SUMMARY OF CENTRAL PA. HAY AUCTIONS FOR WEEK ENDING 5/17/91. PRICES PER TON: LOADS: 129 HAY, 13 STRAW & 9 EAR CORN

ALFALFA 65.00-112.50, MIXED HAY 40.00-95.00; TIMOTHY HAY 40.00-82.50; STRAW 60.00-80.00, MULCH 72.50-85.00.

SUMMARY OF CENTRAL PA. HAY AUCTIONS FOR WEEK ENDING 5/17/91. PRICES PER TON: LOADS: 129 HAY, 13 STRAW & 9 EAR CORN

ALFALFA 65.00-112.50, MIXED HAY 40.00-95.00; TIMOTHY HAY 40.00-82.50; STRAW 60.00-80.00, MULCH 72.50-85.00.

SUMMARY OF CENTRAL PA. HAY AUCTIONS FOR WEEK ENDING 5/17/91. PRICES PER TON: LOADS: 129 HAY, 13 STRAW & 9 EAR CORN

ALFALFA 65.00-112.50, MIXED HAY 40.00-95.00; TIMOTHY HAY 40.00-82.50; STRAW 60.00-80.00, MULCH 72.50-85.00.

SUMMARY OF CENTRAL PA. HAY AUCTIONS FOR WEEK ENDING 5/17/91. PRICES PER TON: LOADS: 129 HAY, 13 STRAW & 9 EAR CORN

ALFALFA 65.00-112.50, MIXED HAY 40.00-95.00; TIMOTHY HAY 40.00-82.50; STRAW 60.00-80.00, MULCH 72.50-85.00.

SUMMARY OF CENTRAL PA. HAY AUCTIONS FOR WEEK ENDING 5/17/91. PRICES PER TON: LOADS: 129 HAY, 13 STRAW & 9 EAR CORN

ALFALFA 65.00-112.50, MIXED HAY 40.00-95.00; TIMOTHY HAY 40.00-82.50; STRAW 60.00-80.00, MULCH 72.50-85.00.

SUMMARY OF CENTRAL PA. HAY AUCTIONS FOR WEEK ENDING 5/17/91. PRICES PER TON: LOADS: 129 HAY, 13 STRAW & 9 EAR CORN

ALFALFA 65.00-112.50, MIXED HAY 40.00-95.00; TIMOTHY HAY 40.00-82.50; STRAW 60.00-80.00, MULCH 72.50-85.00.

SUMMARY OF CENTRAL PA. HAY AUCTIONS FOR WEEK ENDING 5/17/91. PRICES PER TON: LOADS: 129 HAY, 13 STRAW & 9 EAR CORN

ALFALFA 65.00-112.50, MIXED HAY 40.00-95.00; TIMOTHY HAY 40.00-82.50; STRAW 60.00-80.00, MULCH 72.50-85.00.

SUMMARY OF CENTRAL PA. HAY AUCTIONS FOR WEEK ENDING 5/17/91. PRICES PER TON: LOADS: 129 HAY, 13 STRAW & 9 EAR CORN

ALFALFA 65.00-112.50, MIXED HAY 40.00-95.00; TIMOTHY HAY 40.00-82.50; STRAW 60.00-80.00, MULCH 72.50-85.00.

SUMMARY OF CENTRAL PA. HAY AUCTIONS FOR WEEK ENDING 5/17/91. PRICES PER TON: LOADS: 129 HAY, 13 STRAW & 9 EAR CORN

ALFALFA 65.00-112.50, MIXED HAY 40.00-95.00; TIMOTHY HAY 40.00-82.50; STRAW 60.00-80.00, MULCH 72.50-85.00.

SUMMARY OF CENTRAL PA. HAY AUCTIONS FOR WEEK ENDING 5/17/91. PRICES PER TON: LOADS: 129 HAY, 13 STRAW & 9 EAR CORN

ALFALFA 65.00-112.50, MIXED HAY 40.00-95.00; TIMOTHY HAY 40.00-82.50; STRAW 60.00-80.00, MULCH 72.50-85.00.

SUMMARY OF CENTRAL PA. HAY AUCTIONS FOR WEEK ENDING 5/17/91. PRICES PER TON: LOADS: 129 HAY, 13 STRAW & 9 EAR CORN

ALFALFA 65.00-112.50, MIXED HAY 40.00-95.00; TIMOTHY HAY 40.00-82.50; STRAW 60.00-80.00, MULCH 72.50-85.00.

SUMMARY OF CENTRAL PA. HAY AUCTIONS FOR WEEK ENDING 5/17/91. PRICES PER TON: LOADS: 129 HAY, 13 STRAW & 9 EAR CORN

ALFALFA 65.00-112.50, MIXED HAY 40.00-95.00; TIMOTHY HAY 40.00-82.50; STRAW 60.00-80.00, MULCH 72.50-85.00.

SUMMARY OF CENTRAL PA. HAY AUCTIONS FOR WEEK ENDING 5/17/91. PRICES PER TON: LOADS: 129 HAY, 13 STRAW & 9 EAR CORN

ALFALFA 65.00-112.50, MIXED HAY 40.00-95.00; TIMOTHY HAY 40.00-82.50; STRAW 60.00-80.00, MULCH 72.50-85.00.

SUMMARY OF CENTRAL PA. HAY AUCTIONS FOR WEEK ENDING 5/17/91. PRICES PER TON: LOADS: 129 HAY, 13 STRAW & 9 EAR CORN

ALFALFA 65.00-112.50, MIXED HAY 40.00-95.00; TIMOTHY HAY 40.00-82.50; STRAW 60.00-80.00, MULCH 72.50-85.00.

SUMMARY OF CENTRAL PA. HAY AUCTIONS FOR WEEK ENDING 5/17/91. PRICES PER TON: LOADS: 129 HAY, 13 STRAW & 9 EAR CORN

ALFALFA 65.00-112.50, MIXED HAY 40.00-95.00; TIMOTHY HAY 40.00-82.50; STRAW 60.00-80.00, MULCH 72.50-85.00.

SUMMARY OF CENTRAL PA. HAY AUCTIONS FOR WEEK ENDING 5/17/91. PRICES PER TON: LOADS: 129 HAY, 13 STRAW & 9 EAR CORN

ALFALFA 65.00-112.50, MIXED HAY 40.00-95.00; TIMOTHY HAY 40.00-82.50; STRAW 60.00-80.00, MULCH 72.50-85.00.

SUMMARY OF CENTRAL PA. HAY AUCTIONS FOR WEEK ENDING 5/17/91. PRICES PER TON: LOADS: 129 HAY, 13 STRAW & 9 EAR CORN

ALFALFA 65.00-112.50, MIXED HAY 40.00-95.00; TIMOTHY HAY 40.00-82.50; STRAW 60.00-80.00, MULCH 72.50-85.00.

SUMMARY OF CENTRAL PA. HAY AUCTIONS FOR WEEK ENDING 5/17/91. PRICES PER TON: LOADS: 129 HAY, 13 STRAW & 9 EAR CORN

ALFALFA 65.00-112.50, MIXED HAY 40.00-95.00; TIMOTHY HAY 40.00-82.50; STRAW 60.00-80.00, MULCH 72.50-85.00.

SUMMARY OF CENTRAL PA. HAY AUCTIONS FOR WEEK ENDING 5/17/91. PRICES PER TON: LOADS: 129 HAY, 13 STRAW & 9 EAR CORN

ALFALFA 65.00-112.50, MIXED HAY 40.00-95.00; TIMOTHY HAY 40.00-82.50; STRAW 60.00-80.00, MULCH 72.50-85.00.

SUMMARY OF CENTRAL PA. HAY AUCTIONS FOR WEEK ENDING 5/17/91. PRICES PER TON: LOADS: 129 HAY, 13 STRAW & 9 EAR CORN

ALFALFA 65.00-112.50, MIXED HAY 40.00-95.00; TIMOTHY HAY 40.00-82.50; STRAW 60.00-80.00, MULCH 72.50-85.00.

SUMMARY OF CENTRAL PA. HAY AUCTIONS FOR WEEK ENDING 5/17/91. PRICES PER TON: LOADS: 129 HAY, 13 STRAW & 9 EAR CORN

ALFALFA 65.00-112.50, MIXED HAY 40.00-95.00; TIMOTHY HAY 40.00-82.50; STRAW 60.00-80.00, MULCH 72.50-85.00.

SUMMARY OF CENTRAL PA. HAY AUCTIONS FOR WEEK ENDING 5/17/91. PRICES PER TON: LOADS: 129 HAY, 13 STRAW & 9 EAR CORN

ALFALFA 65.00-112.50, MIXED HAY 40.00-95.00; TIMOTHY HAY 40.00-82.50; STRAW 60.00-80.00, MULCH 72.50-85.00.

SUMMARY OF CENTRAL PA. HAY AUCTIONS FOR WEEK ENDING 5/17/91. PRICES PER TON: LOADS: 129 HAY, 13 STRAW & 9 EAR CORN

ALFALFA 65.00-112.50, MIXED HAY 40.00-95.00; TIMOTHY HAY 40.00-82.50; STRAW 60.00-80.00, MULCH 72.50-85.00.

Leinbach's Hay