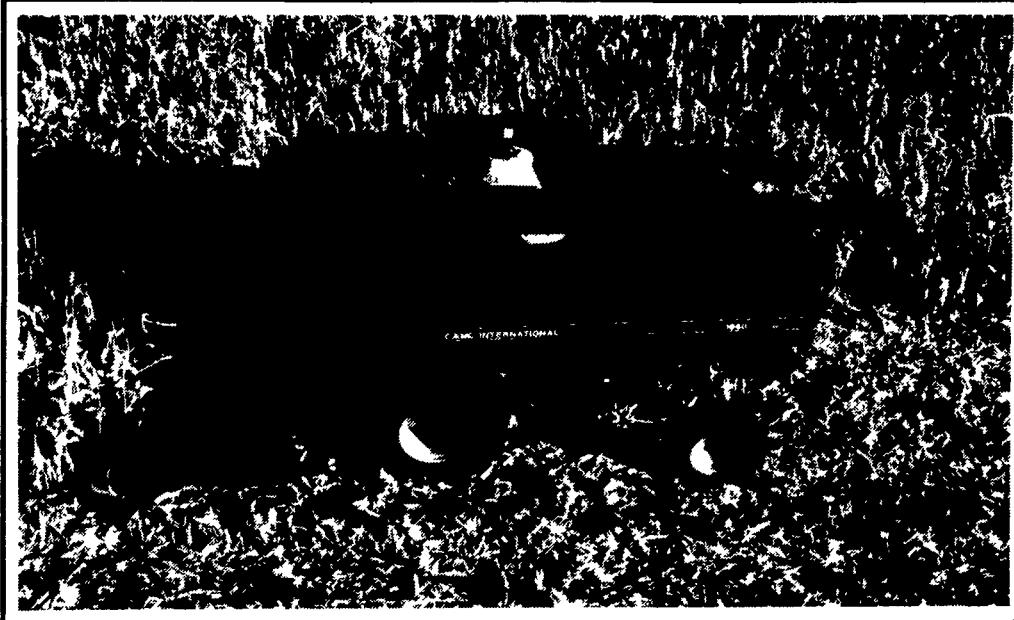




AXIAL FLOW...One Step Ahead For



...OPERATION
...ECONOMY
...PERFORMANCE
...VALUE
...COMFORT
...HEADERS

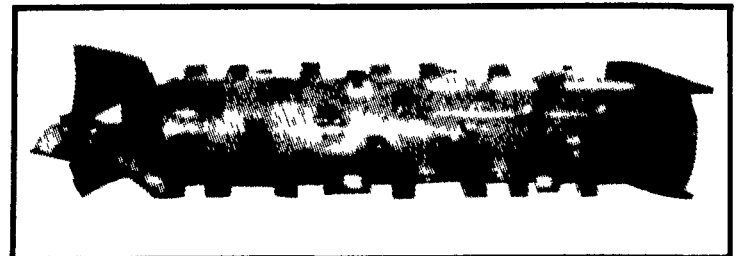
THE AXIAL FLOW SYSTEM PUTS CLEAN, QUALITY GRAIN IN THE TANK...

The Case International XPE Axial-flow Combines feature a single, in-line mounted rotor that gets multiple chances to gently thresh your crop, and then separate it from straw, stalks, pods, and trash. So more of the crop gets harvested, with less damage.

Threshing and separating in a conventional combine takes as many as 16 moving parts. But threshing and separating in the Axial-Flow Combine utilizes just one moving part-- the rotor. It simply does a better job.

Although the Axial-Flow combine is built around the extraordinary performance strengths of the rotor, from header to straw spreader there are no weak links.

Hooper's professional combine servicemen have 14 years experience setting axial flow combines in a large variety of crops in most all types of field and weather conditions. When it comes to the KNOW-HOW of making the Axial-Flow combine perform, Hooper men know how.



THE ROTOR GENTLY THRESHES SEPARATES AND FEEDS THE CROP FOR EXTRAORDINARY RESULTS IN THE TANK.



THE BRAGGING STOPS HERE!!!



Serving Agriculture



(717) 768-8231

HOOPER

C.B. HOOPER & SON INC.
INTERCOURSE, PA

