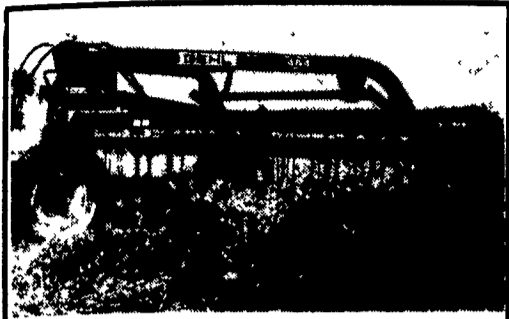


Let **GEHL** handle your hay

Since 1989 Gehl Company has been a leader in the design and construction of top quality farm equipment. This tradition of quality is evident when you take a look at Gehl's complete line of hay rakes and tedders.

GEHL FINANCE

*Flexible Financing
for
Quality Equipment*



Gehl 454 9 1/2 Ft. Hydraulic Bar Rake

Front Dolly Wheel, New Tires, Brand New - Slightly Weathered, #6112, List \$4,050

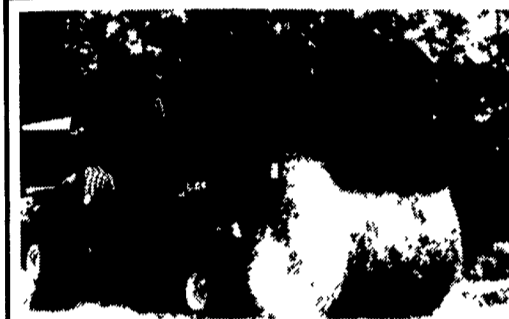
ONE ONLY **\$2,795** FOB Fontana



Gehl 215 3-Point 5 Wheel Rake

Brand New, Slightly Weathered, Limited Supply, List \$1,314

NOW ONLY **\$975** FOB Fontana



Variable chamber round baler

Depending on the type of baling you do, a variable chamber round baler may be your best buy. Features include Gehl "airdraulics," a system that gives you **total density control (TDC®)**. It allows you to control the size of the bale core and the density of the outer wrap to build a bale that's just right for your crop. You get high quality bales that look good and store well. And you can operate your baler with lower horsepower tractors. Two models make bales up to 5 ft. or 6 ft. in diameter. Gehl's optional dual twine **Auto-Electric Wrap System** ensures a uniform twine wrap automatically, bale after bale.

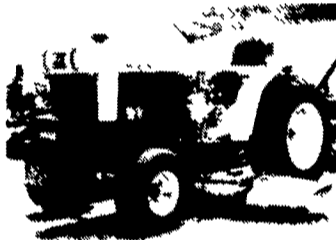
MODELS 1470 AND 1970 IN STOCK!



John Deere 310 Diesel Backhoe Loader, New Engine, Nice Condition



Gleaner Model M Combine Hydro Diesel 13 Ft. - Nice Condition



Mitsubishi 160 Diesel Compact Tractor w/48" Belly Mower, 250 Hrs., Sharp



John Deere 506 5 Ft. Heavy Duty Rotary Chopper w/ Stump Jumper



Century 300 Gal. Sprayer, 28 Ft. Booms, Roller Pump



New Holland 489 9 Ft. Haybine, New Paint, Nice Condition

Tye 10 Ft. No-Till Drill FOR RENT! •Soybean & Inoculant Available

DUTCH AUCTION

You determine the price! Depends on when you buy!!

Item For Sale	Reg. Price	Daily Reduction	Price On 5/25/91
• Brillion 10' Packer 4" Axle (Tag 2112)	\$ 650	\$ 4	\$ 506
• Brillion 25' Wing Packer 4" Axle (Tag 2060)	4,990	20	4,270
• Gehl 3510 Skid Loader - 27HP - 54" Bucket (Tag 2088)	5,950	24	5,086
• Gehl 2600 Skid Loader - 25HP - 2 Buckets (Tag 2050)	4,490	20	3,770
• John Deere 14-T Baler - Good Condition (Tag 2072)	950	4	806
• Gehl FB99 Forage Blower - Completely Reconditioned (Tag 1329)	1,595	6	1,379
• Gehl 1580 Forage Blower - Very Good (Tag 2024)	2,890	10	2,530
• Hedlund Martin 1678 Tandem Scavenger Spreader (Tag 2128)	5,900	24	5,036
• Owatonna Model 83 Grinder Mixer (Tag 1352)	2,495	12	2,063
• IH (Artsway) TMR Mixer w/Scales (Tag 2073)	3,950	16	3,374

Sale Ends June 30, 1991

Above items will be reduced at the above published daily reductions and will be computed on six working days per week.



Umberger's Of Fontana, Inc.

Rt. 4, Box 545, Lebanon, PA 17042
8 miles E. of Hershey on Rt. 322.

717-867-5161

"Serving the Agriculture Community Since 1932"



BUSH HOG

Keweenaw

FOR SALE AG BAGGER

Model 6H680
Ag Bagger, 3
Years Old,
Excellent
Condition
\$11,500
Call after 6 PM
804-286-2796

JD 2020, Diesel,
Reconditioned
MF 35, PS
Modified pulling tractor
\$3,500

JD 4320, good
condition
Mack single axle dump
truck \$3,850
MF 65 w/side shift
Industrial forklift,
nice unit \$4,650
JUST IN FOR PARTS:
JD 4010; AC 190;
David Brown 1200.

**ED GOODRICH,
JR.
607-642-3293**

LEITER'S HARDWARE and IMPLEMENTS

103 South Carlisle St.
Greencastle, PA 17225
(717) 597-2151

FOR SALE
IHC 1066 D; IHC 656 D;
IHC 656 D WL; IHC 674
D WL; IHC SC w/Cult.;
Case Int. 1594; New
Case Int. 275; Case 530
WL; MF 265; MF 175;
MF 165; JD 3020 Side
Console; JD 2630; JD
820; Pequea & Zimmer-
man Hay Tedders; NH
Hay Balers; NH 477
Haybine; NH 846 Round
Baler; NH & Int. Rakes;
Hesston PT10 Haybine;
MF 750 Combine Flex
Head; New Zimmerman
Forage Wagons; Bad-
ger Blower.

**(717)
597-2151**

TRACTORS: Int. 684,
1700 hrs.; Cub Lo-
Boy w/belly mower;
560 w/loader; Int.
1456; 1086 cab, 1600
hrs.; 966 cab; 966;
886 cab, 1900 hrs.;
826, 784 w/loader;
684; 674; 666; 584;
364; 350; JD 4020;
4010; 3010. FORD
800; 640; 9N. WHITE
2-150 w/cab. OLIVER
88. AC XP190. CASE
1070 w/cab. FORD
CL40 skid steer. JD
70 skid steer; JD 350
dozer; Toyota forklift.

EQUIPMENT: Balers:
NH 310; 282; 273;
269; JD 336; MF 12.

ROUND BALER: NH
851; 847; JD 410.

HAYBINES: (2) NY 489;
477; 488; NI 507; IH
1190; Hesston 1014;
IH 990; Grimm
Tedder.

COMBINES: JD 6600;
(2) 4400; 3300; MF
750; 410; IH 205;
Gleaner K
Call

**Leader's Farm
Equipment
Everett, PA
814-652-2809**

USED TRACTORS

JD 630, 3 pt., nice..... \$3,900
JD L..... \$950
JD B w/factory wide front..... \$1,650
JD GM..... \$1,950
Ferguson TO-30 Runs Good..... \$1,850
Selling Parts Off Of The Following
JD Tractors:

A, B, G, GM, H, 70, 820, 430, 3010, 4010,
4020, **ALSO ENGINE PARTS:** 2030,
2840, 4430, etc.

**FAHNESTOCK
FARM SERVICE
435 S. Race St.
Myerstown, PA 17067
717-866-7066**

BATES CORPORATION

14TH AND FIR ROAD • BOURBON, IN 46504

For These Hard-To-Find And Discontinued
Items, Call The IH Parts Specialist
(800) 248-2955 Call Toll Free
Thousands Of IH Parts On The
Shelf Ready For Immediate Shipment

Guaranteed
Best Prices
On Factory
Rebuilt IAs



- Crankshafts
- Complete Rear Ends
- Wide Front Ends
- Starters
- Generators
- Rebuilt Clutches
- Pressure Plates
- Rebuilt Heads
- Wheels
- Carburetors
- Injection Pumps
- PTO Assemblies
- Gears Axles
- Complete Motors
- New & Used Manifolds
- New & Used Hydraulic Pumps



Best Prices Best Service Prompt Shipments
We Ship UPS Truck And Bus Daily
Nationwide Parts Locator Service



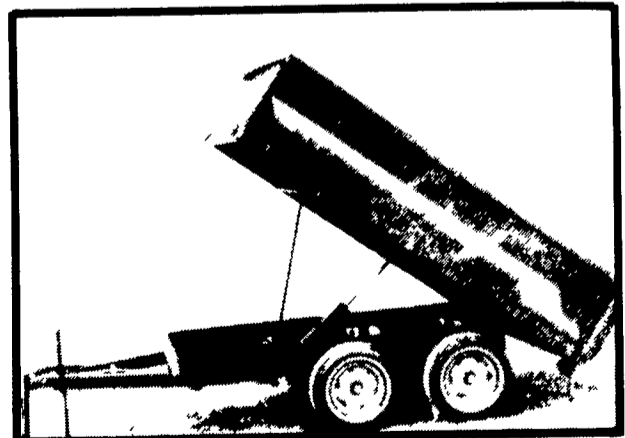
Case 1494
White 2-62
MF 1020 4WD Hydro 150
Hours
Ford 6600
Farmall Cub w/Attachments
IH 460 Diesel
Ford Versatile V-276 By-
Directional w/Loader
NH 451 Mower, Excellent
NH 479 Haybine
NH 489 Haybine
Gehl CB 600 Harvester w/
Heads
NH Super 69 Baler w/
Thrower
NH 668 LH Tank Spreader
NI 390 BU Spreader w/
Endgate And New Chains
Gehl 99 Blower
MF 52 Disc



SCHREFFLER EQUIPMENT

Pitman, PA
717-648-1120
717-648-1811

DIRECT FACTORY SPECIAL



SELF CONTAINED HYDRAULIC DUMP TRAILERS

5'x10' - 7000# GVW All Brake Axles \$2,695
While Supply Lasts
Pa Registration Only \$12.00 Yearly,
Minimal Insurance Cost
Other Sizes Available

KUTZ FARM EQUIPMENT, INC.

Pine Grove, PA
717-345-4882