



**Philadelphia Vegetables**  
Philadelphia, Pa.

Wednesday, May 15, 1991

ARTICHOKES CA ctn 36s 9.00 fair cond 6.00-7.00 48s 8.50 ord cond 3.50-4.00 60s fair cond 4.00-5.00 sml lse few 12.00.

ASPARAGUS HIGHER CA 30-lb crt lge 22.00 30-lb ctn exlge 18.00-20.00 some low as 14.00 Long Green lge 23.00 std 25.00 WA 30-lb crt WAExFcy lge & std 24.00-26.00 bchd 24s lge & std 24.00-26.00.

BEANS LOWER various bu containers Round Green type unless otherwise stated FL 13.00- 14.00 poor cond 1.00-2.00 GA 12.00-14.00 some best 17.00-18.00 SC few 18.00 CA 25-lb ctn Fava type 18.00.

BEETS ABOUT STEADY NC crt bchd 12s 9.00-10.00 FL topped 25-lb film bags 7.00.

BROCCOLI SLIGHTLY LOWER CA ctn bchd 14s 6.00-7.00 mos 6-6.50 few 7.50 18s 7-7.50 loose crowns 9.00 NC ctn bchd 14s fair cond 4.00-5.00.

BRUSSEL SPROUTS MEXICO 25-lb ctn 16.00-17.00.

CABBAGE ABOUT STEADY 1-3/4 buctn & crt med green unless otherwise stated GA 10.00 fair cond 5.00 Red few 18.00 NC few 9.00-10.00 NY 50-lb sks lge 9.00 few 8.00 CA Red 15.00 CANADA 50-lb sks med 8.00.

CARROTS 50-LB SACKS SLIGHTLY LOWER, OTHERS ABOUT STEADY 48-1 lb film bags in film sacks CA med-lge 9.00-12.00 mos 10.00 few hgr FL med few 9.00 50-lb sacks loose jumbo CA 24.00-25.00 mos 25.00 AZ 22.00- 24.00 50-lb ctns loose CA med-lge 15.00-16.00 med 13.00-14.00 ctn bchd 24s CA 10.50-11.00 Miniature type CA ctn bchd 24s 11.00-12.00 FL ctn 20-12 oz film bags 10.00 20-1 lb film bags peeled few 14.00.

CAULIFLOWER LOWER CA ctn film wrpd 9s 6.00 fair cond 3.00-4.00 12s 6.00-9.00.

CELERY ABOUT STEADY CA ctn 2 doz 15.00-17.00 2-1/2 doz 15.00-18.00 few 19.00 3 doz 15.00-17.00 FL ctn 2-1/2 doz 14.00-15.00 fair cond 12.00-13.00 3 doz 15.00.

CHINESE CABBAGE CA 50-lb ctn Nappa 15.00-16.00 Bok Choy 15.00-16.00.

CORN ABOUT STEADY FL wire-bound crt 48 ears min White 12.00-13.00 mos 12.00 fair cond 10.00- 11.00 Yellow 10.00 fair cond 7.00-8.00.

CUCUMBERS LOWER 1-1/9 buctns waxed medium unless otherwise stated FL 13.00 fair appear 10.00-12.00 ord cond 4.00 fair qual 7.00-10.00 mos 8.00 fair cond 5.00-6.00 ord cond 2.00-3.00 poor cond .50-1.00 sml 10.00 SC 14.00-15.00 sml few 10.00-12.00.

DAIKON CA 40-lb ctn 12.00-13.00 mos 12.00.

EGGPLANT OFFERINGS LIGHT FL buctn wrpd med 14.00 fair qual 10.00.

ENDIVE OFFERINGS LIGHT BELGIUM 10-lb ctn Witloof type 11.00-12.00. ESCAROLE OFFERINGS INSUFFICIENT TO QUOTE.

GARLIC per lb New Crop MEXICO 30-lb ctn Purple #11 1.67 #9 1.50 #8 1.40 #7 1.25.

GREENS ABOUT STEADY crt & ctn approximately 1-1/2 bu bchd unless otherwise stated NC Collards 8.00 fair cond few 6.00 Mustard, Turnip Tops & Rape 6.50 Kale fair cond 6- 6.50 GA Kale 7.00 NJ Dandelion 6.00 CA 24s Red Kale 14.00-15.00 Red Swiss Chard 9.50 20-lb ctn Broccoli Rabe one label 27.00.

LEEKs LOWER NJ crt bchd 12s 10.00-12.00 CA ctn bchd 12s 11.00.

LETTUCE ICEBERG HIGHER ctn 24s unless otherwise stated CA 18.00-20.00 some 21.00 fair qual 17.00 film wrpd 30s

19.00-20.00 ROMAINE LOWER CA 24s ctn 14.00-16.00 mos 14.00-15.00 fair appear 11.00-12.00 crt 18.00- 19.00 mos 18.00 NJ ctn 24s 7.00 BOSTON CA ctn 24s 8.00-10.00 few 11.50-12.00 fair cond 6.00-7.00 FL ctn 24s 6.00 NJ crt 24s 5.00-6.00 mos 5.00 BIBB NJ 5/9 buct 18s fair cond 2.50-3.00 LEAF CA ctn 24s 14.00-17.00 mos 14.00 occ hgr few 13.00 fair cond 11.00- 12.00 ord cond 5.00 Red 12.00-15.00 mos 12.00-13.00 few 11.00 ord cond 5.00.

MUSHROOMS STEADY PA 4-qt bkt med-lge 5-5.50 sml-med 4-4.50 10-lb ctn med 9.00-9.50 few 9.75 lge 11.00-11.50 few 11.75 packages 10-12 oz 9-9.50 some 8.50 3-lb ctn Shiitake 15.00-17.00 mos 16.00-17.00 fair qual 10.00-12.00.

OKRA NO SALES REPORTED.

ONIONS-GREEN ABOUT STEADY NJ ctn bchd 48s 8.00-9.00 crt bchd 36s few 6.50-7.00 MEXICO ctn bchd 48s 7-7 50 occ hgr.

PARSLEY OFFERINGS LIGHT bchd 5 doz Curly unless otherwise stated NJ bubkt 8.00-10.00 Plain crt 30s 9.00 Root type bchd 12s 12.00 FL crt Plain 18.00 CA ctn 11.00.

PARSNIPS OFFERINGS INSUFFICIENT TO QUOTE.

PEAS-GREEN ABOUT STEADY CA buct 23.00 10-lb ctn per lb Sugar type 1.10-1.15 Sugar Snap type few 1.40-1.50 GUATEMALA 10-lb ctn per lb Sugar type 1.00 fair cond .60-.80 Sugar Snap type 1.50 MEXICO 1-1/9 buct few 22.00-23.00.

PEAS-SOUTHERN NO OFFERINGS.

PEPPERS SLIGHTLY LOWER 1-1/9 buctns Calif Wonder type Green unless otherwise stated FL exlge 16.00-18.00 lge 14.00-16.00 mos 15.00-16.00 fair cond 12.00 med 10.00-12.00 ord cond 3.00 sml fair qual 6.00 Mixed Red lge 6.00-8.00 med-lge fair cond 4.00 med 7.00 PA 10-lb ctn Red lge 32.00.

RADISHES LOWER FL ctn Red 30-6 oz film bags 4-4.50 fair cond 3.00-4.00 OH ctn Red 30-6 oz film bags 4.25-6.00 14-1 lb film bags 4.50 16-qt bkt bchd 24s 6.00-7.00 NJ Red 1/2 buctn bchd 24s 6.00 4/5 buct bchd 36s few 12.00 MEXICO ctn Red bchd 24s 7.00.

RHUBARB WA 20-lb ctn ExFcy 11.00. RUTABAGAS CANADA 50-lb ctns CD#1 waxed med 7.00.

SPINACH ABOUT STEADY NJ Savoy type bubkts few 5.50-6.00 00 CA Flat type ctn bchd 24s 8.00-10.00 few 10.50.

SQUASH LOWER 1/2 & 5/9 buctns & ctns unless otherwise stated FL Zucchini sml-med 4.00- 6.00 mos 5.00 med 3.00 Yellow Straightneck sml-med 5.00-6.00

med 4.00 GA Zucchini sml-med 5.00-6.00 fair cond 2.00-4.00 med 3.00-5.00 mos 4.00 Yellow Straightneck sml-med 5.00-6.00 med 3.00-5.00 mos 4.00 SC Zucchini sml-med few 6.00-7.00 med few 4.00-5.00.

SWEET POTATOES ABOUT STEADY NC 40-lb ctn US#1 Jewel type cured med 7-7 50 mos 7 50 fair appear 6.50 fair qual 4.50 lge 4.50.

TOMATOES ABOUT STEADY 25-lb ctn Pink to Light Red USComb grade or better unless otherwise stated FL 5x6s 22.00 few 24.00 6x6s 19.00 few 21.00 6x7s 16.00 fair qual 5x6s 18.00-21.00 mos 20.00 6x6s 15.00-19.00 6x7s 14.00 REPACKED LOCALLY FL 5x6s 25.00 6x6s 23.00 6x7s 20.00 PLUM TYPE FL offerings insufficient to quote CHERRY TYPE flats 12-1 pint trays FL 15.00 ord cond 5.00 MEXICO 17.00.

TURNIPS Topped NJ 25-lb mesh bags med 5.50-6.00.

VEGETABLES-OTHER ITALY 1-lyr flat Radicchio 12s 16.00.

WATERCRESS FL ctn bchd 24s 10.50.

**Leola Produce Auction**

Leola, PA

May 14, 1991

Report Supplied by Auction

ASPARAGUS: .80-1.25 12 OZ. BUNCH.

SUGAR PEAS: 20.00-28.00 10 LBS. SNAP PEAS: 20.00-28.00 10 LBS.

LETTUCE: 3.00-4.50 6-10 HEAD COUNT.

SPRING ONIONS: 6.00-10.50 40 CT. BUNCH.

POTATOES: (OLD) 1.50-1.75 50 LBS. UNCLASS.

RADISHES: 5.00-8.00 40 CT. BUNCH. RED BEETS: 10.00-13.00 15 CT. BUNCH.

RHUBARB: 3.00-5.50 15 CT. BUNCH. SPINACH: 6.00-8.00 1 1/9 BU.

STRAWBERRIES: 16.00-20.00 12 PINT FLAT.

TOMATOES: (GREENHOUSE) 38.00-45.00 25 LBS. #1.

WATERCRESS: 3.00-4.00 1/4 BU. FLOWER BEDDING PLANTS: 4.50-7.75 FLAT; HANGING BASKETS 4.50-7.50 EACH.

GERANIUMS: 1.20-1.50 EACH. PLANTERS: 7.00-10.50 EACH.

VEGETABLE PLANTS: TOMATOES AND PEPPERS 3.50-8.00 FLAT; CANTALOPES AND WATERMELONS 5.00-9.00 FLAT.

HERBS: 3.00-7.50 FLAT. SALE DAYS NEXT WEEK ARE MON., TUES., THURS. AND FRI. 10 A.M.

**Kutztown Produce Auction**

Fleetwood, PA

10 a.m. May 14

Report Supplied by Auction

APPLES: JONATHON 2.50-3.50 BU., RED DELICIOUS 5.75 BU., BLUSHING GOLD 10.50 BU.

ASPARAGUS: .74-1.20 12 OZ. BUNCH.

EGGS: MED. .58, LGE. .70-.76 DOZ. SPRING ONIONS: .14-.40 BUNCH. POTATOES: OLD RED 50 LBS. 1.10-1.90.

RADISHES: .12-.26 BUNCH. RHUBARB: .06-.40 BUNCH. SPINACH: 6.00 1/4 BU.

GREENHOUSE TOMATOES: 1.05-1.60 LB.

FLOWER BEDDING PLANTS: 3.00-11.00 FLAT.

HANGING BASKETS: 4.50-8.50 EACH.

GERANIUMS: 1.25-2.25 EACH. PLANTERS: 7.00 EACH.

POTTED PERENNIALS: 2.00-5.00 EACH.

VEGETABLE PLANTS: ASSORTED 2.50-6.00 FLAT.

NEXT WEEK'S SALE DAYS TUES. AND FRI. AT 10 A.M.

**Buffalo Produce**

Mifflinburg R3

May 9 and 14, 1991

Report Supplied by Auction

ASPARAGUS: .75-1.05 1/4 LB. BUNCH.

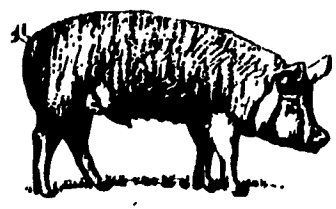
BEDDING PLANTS: 3.00-6.75 FLAT. RHUBARB: 23-35 PER LB.

RADISHES: 3.50-6.00 1/4 BU. SPRING ONIONS: 20-30 BUNCH.

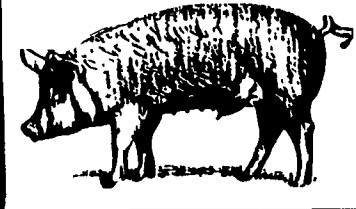
GERANIUMS: 4" .90-1.35 EACH; 6" 3.50-4.75 EACH.

AZALEAS: 3.50-10.00 EACH. HANGING BASKETS: 4.25-9.50 EACH.

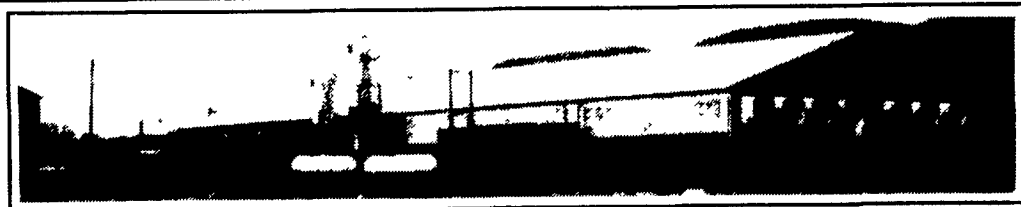
AUCTIONS EVERY TUES. & THURS. 11 A.M. PHONE 966-1151.



**BEFORE IT GOES TO WORK ON YOUR FARM IT'S PROVEN TO WORK FOR OTHERS!**



**Turnkey Systems & Everything You Need To Succeed!**



2000 Head Swine Finishing Unit

300 Sow Feeder Pig Unit



**TRI-COUNTY SWINE UNITS FEATURE:**

- **HOG SLAT** Stainless Steel Feeders, Gang Slats & Proctor Hydraulic Crates
- **aerotech** Engineered Ventilation Systems With Certified System Design
- **GSI** Galvanized Feed Bins, Flex-Flow Augers And Automatic Sow feeding

**Swine Operations Offer An Opportunity For Full Or Part-Time Income And Solid Return On Investment. Contracts And Financing Available. CALL FOR DETAILS!**



**TRI-COUNTY**

CONFINEMENT SYSTEMS INC.

608 E. Evergreen Rd., Lebanon, PA 17042

Ph: 717-274-3488

Hours: Mon.-Fri.

7:00 to 4:30;

Sat. 8:00 to 12:00