

# Cumberland Co. DHIA

(Continued from Page C7)

David R Walton Charm	3	3	20,476	710
Glenn W Myers Thelma	B3	3	20,672	706
Kevin W Fuls Stacy	B3	5	20,662	706
Glenn Newswanger 81	B3	3	22,987	703
Stambaugh Farms 72	B3	7	20,081	702
Harry & Paul Hoch 123 Bety	3	3	23,465	695
Stambaugh Farms 105	B3	5	19,479	695

Ron&Candy Cooney RH	63.1	88.0	19,958	772	632
Dave&Deb Gehman R&GH	101.1	89.1	19,512	697	631
Rodney Lane GH	44.4	85.8	19,112	670	629
Craig Torrey R&GH	44.4	89.9	19,422	634	610
Titus Risser R&GH	112.8	86.4	18,331	698	609
Dan&Leon Tice R&GH	53.3	89.9	19,348	689	608
John C Traub GH	41.4	87.8	18,838	701	605
R-Own Farms RH	85.4	84.1	18,918	657	600
So-No-Co Farms R&GH	54.3	87.7	18,631	680	591
Karl Torrey R&GH	98.0	84.2	17,802	660	586
Robert Francis RH	36.8	84.0	18,764	723	578
J J Farms RH	33.8	86.4	17,436	602	571
Jack Knowlton RH	55.0	90.1	17,835	655	567
George Young R&GH	81.7	87.8	17,368	625	561

Dale Hoffman & Sons Tracy H	8-7	305	32,153	1072	979
Mandy H	6-11	305	23,648	778	918
Kevin Risser Melissa H	6-3	305	24,816	786	914
Titus Risser #50 H	4-9	305	24,459	784	957

## Clearfield County DHIA March, 1991 Rolling Herd Average

Name	Brd.	No. Cows	% In Milk	Days Milk Lbs.	Fat Lbs.	Protein Lbs.
Hicks Dairy Farm	B3	70.0	92.2	20,220	721	669
R Wriglesworth & Son	B3	56.6	88.1	20,540	763	642
Orner Farms Inc	B3	73.9	86.2	19,732	723	614
Marty&Cindy Whitaker	B3	34.7	86.2	20,041	692	612
Carl G Brink + Sons	B3	74.1	87.7	18,960	673	599
Ecklund Holsteins	B3	52.0	86.8	19,083	670	588
Ralph McClarren	G3	31.6	86.2	17,221	635	560

### Lactation Report

R-Own Farms Bumblebee	H	3-4	305	22,982	760	902
Guy Dunn Telly	H	5-3	305	26,014	851	893
Ivajen Farms Colleen	H	6-9	305	25,203	784	1078
Shannon	H	4-6	305	23,344	787	938
Donald Thompson Charo	H	6-5	305	26,621	847	1009

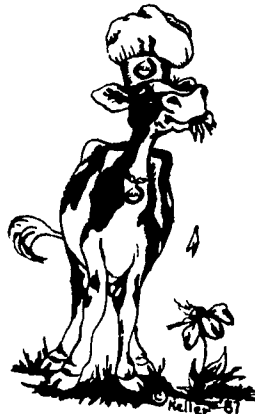
# Potter Co. DHIA



## Monthly Report

April, 1991  
Rolling Herd Average

Name	Brd.	No. Of Cows	Days Milk	Milk Lbs.	Fat Lbs.	Protein Lbs.
Dale Hoffman & Sons	R&GH	103.6	88.1	21,937	770	732
Ivajen Farms	RH	99.5	91.6	21,599	855	720
Kevin Risser	R&GH	127.9	89.7	22,162	800	718
Donald Thompson	RH	52.4	88.0	21,353	787	710
Ivan Smoker & Son	RH	105.3	87.6	21,242	845	710
Jack Thomas Sr	MX	81.2	86.6	21,301	788	680
Guy Dunn	RH	55.5	88.5	19,840	763	679
Carl Erway Farm	GH	102.5	79.3	20,003	760	651



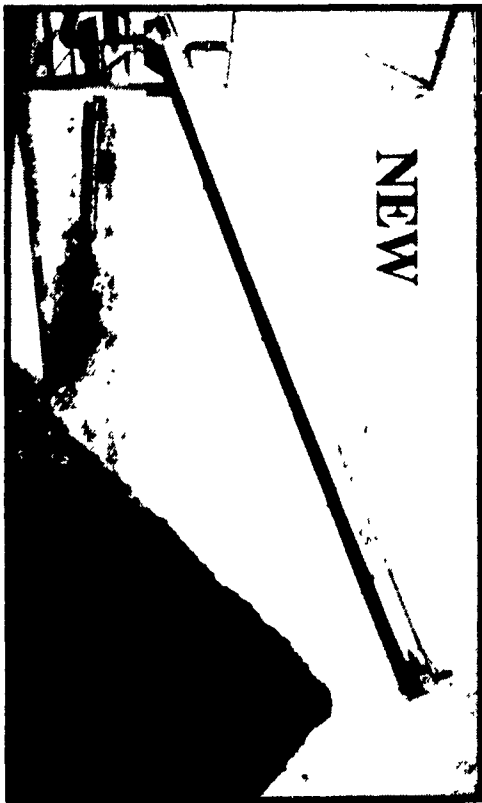
# US AGRI-SYSTEMS

SPECIALIZED FARM EQUIPMENT

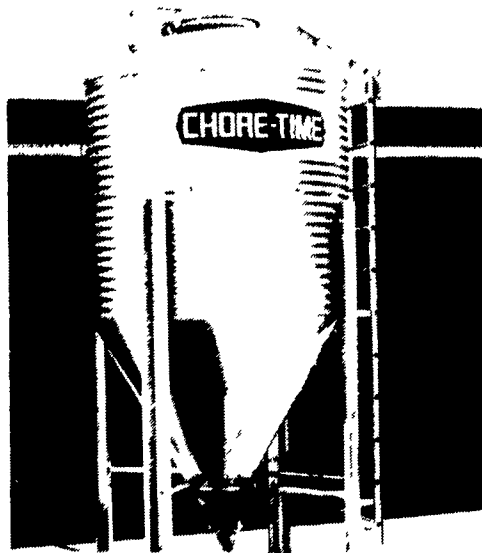
CALL TOLL FREE  
1-800-222-2948

## LIQUID MANURE SEPERATOR

- Exclusive Tunnel Drain System
- Wide Variety of Applications and Manure Consistency
- Stainless Steel Construction
- Layout & Design Assistance Available
- A Size for Every Need



## CHORE-TIME hopper-bottom bins for feed storage



Quality Feed Storage Features Help Make Chore-Time Bins A "Best Buy"

Models Available:  
Your Choice Of 6, 7, 9, 12  
And 15 Ft. All Galvanized  
Hopper-Bottom Bins

We Assemble, Deliver And Set-Up  
Bins On Your Farm!

Your Authorized **CHORE-TIME** Master Distributor

We Stock A Full Line Of Bins And Augers Check Our Warehouse Prices

Swine & Poultry Systems Specialists

**FARMER BOY AG.**  
410 E LINCOLN AVE MYERSTOWN, PA 17067

24 Hour Service PH. 717-888-7565  
Hours: Mon.-Fri. 7:00 to 5:00; Saturday 7:30 to 11:30

# Martin Concrete

Subsidiary of Martin Paving, Inc.

## CONCRETE MIXED AT JOB SITE

METERED  
DELIVERY



PAY ONLY FOR  
WHAT YOU USE!

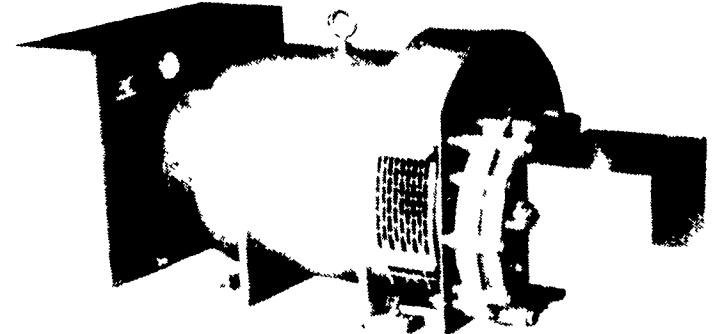
No Waste - We Mix Any Amount  
You Need - Mixes Can Be  
Changed Right On The Job

Mon. Thru Sat.  
Delivery  
P.O. Box 446  
Ephrata, PA

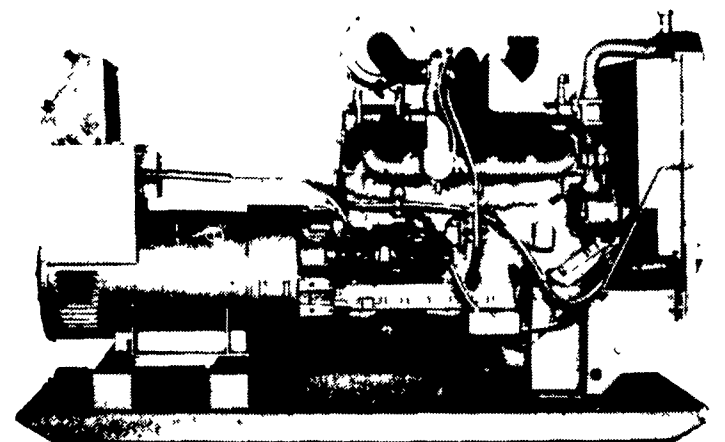
STATE APPROVED DUST OIL  
FOR BARN YARDS,  
FARM LANES, ETC.

Ephrata: (717) 733-7915  
Lititz: (717) 626-2494  
Lebanon: (717) 272-7541

## STANDBY GENERATORS



PTO Driven



Automatic Systems

## MAXI-POWER INC.

330 Fonderwhite Rd. Lebanon, PA 17042

24 Hr. Service

(717) 273-4544

Radio Dispatch