

Public Auction Register

AUCTION

PINE STEP- BACK KITCHEN CUPBOARD, (3) JELLY CUPBOARDS, TAVERN TABLE, DROP-LEAF TABLES, STANDS, VICTORIAN CHEST, EDISON CYLINDER ROLL PHONOGRAPH, ANTIQUE RADIOS & PARTS, EARLY KITCHEN ITEMS, OIL LAMPS, CLOCKS, CROCKERY, OVER 500 ANTIQUE TOOLS & FARM RELATED ITEMS: PLANES, ALGARS, SQUARES, WEATHERVANES, HARDWARE, ETC.

MAY 25, 1991 9:30 A.M. Sharp!

LOCATION: Removed from Conowingo, MD. and sold at Rt. 1 & Rt. 272 Nottingham, PA. 4 mi. N. of Rising Sun, MD. 5 mi. S. Oxford, PA.

BY ORDER:

ESTATE OF ARTHUR TIBBS JEFFREY E. WHITESIDE, AUCTIONEER AU-2368 AUCTIONS, APPRAISALS, REMOVALS- PA. & MD. SERVICE 215-932-2114 or 2291

PUBLIC SALE

FRIDAY, MAY 31, 1991

BEGINNING AT 5:00 P.M. AND

SAT., JUNE 1, 1991

BEGINNING AT 9:00 A.M.

The Estate Of The Late Dolly Miller Will Offer Approx. 100 Acre Farm, With 65 Acres Farmland And Balance In Woodland. Good Hunting At Close Raysetown Resort. Located At Saxton Rd., Pa. In Little Valley. Also Tools, Farm Machinery, Household Items And A Lot Of Nice Antique And Collector Items. For Full Listing Send To Auctioneer's Or Phone Them: Terms Etc. Given: (Please Clip Ad).

Executors-

Thelma Romesburg And Carl Miller

Auctioneer's- The Fleck's Ph (814) 448-2874 Lic. AU-281-L & AU 2761-L RD Box 1276 Three Springs, Pa. 17264

FRI. MAY 24 and SAT. MAY 25 - 9AM Both Days, 1986 Van, Tractor, Shop, Carpenter and Mechanical Tools, HH Goods, Antiques, locatd 2/10 mi. W. of Voganville on Linden Grove Rd., 3 mi. N. of Rt. 23, turn off Rt. 23 on N Groffdale Rd., between New Holland & Leola, Lanc. Co., PA, Ivan Z. Nolt Estate, Robert E. and Jeffrey R. Martin, Aucts.

FRI. MAY 24 - 10AM Sharp! Small Farmette, Personal Property, Autos, Machinery, located from Liverpool, PA, Perry Co., take Rt. 17 W off of 11 & 15, go 1.3 mi to property

on right, Ronald & Tamara Lesko, owners, Kling's Auctioneers, Aucts.

FRI. MAY 24 - 1:30PM, State Graded Feeder Pig Sale, Exit 12 E. off I-81, Carlisle Livestock Market, Inc.

SAT. MAY 25, Used Building Materials, located 4456 MacClays Mill Rd., 2 mi. NW of Middle Springs, Franklin Co., PA, Jonathon S Stoltzfus, owners, Nevin and Andrew Martin, Aucts.

SAT. MAY 25, RE-15 Acre Farmette, located RD 1, Port Trevorton, PA, Hassinger/Courtney, Aucts.

SAT. MAY 25 - 8:30AM, 5 Acre Farmette, Tractor, Farm Equip., Truck, Jeeps, Collectibles, Antiques, HH Goods, & Misc., located York Co., Dallastown, PA, Estate James Luther (J.L.) Thompson, Melvin Haines and Ralph Brenneman, Aucts

SAT. MAY 25 - 8:30AM Sharp! Real Estate, Machine Shop Tools, Hardware, Steel Pipe, Metals & Iron, Farm Machinery, Antiques, etc., located Brogue, PA, David and Helen Hoffmaster, owners, Bob & Tom Sechrist, Aucts.

PUBLIC AUCTION

ESTATE OF CARRIE L. HERMAN

SATURDAY, MAY 25, 1991 8:00 A.M.

LOCATION: 486 WEST MAIN STREET, ELIZABETHVILLE, PENNSYLVANIA REAL ESTATE

2 1/2 -STORY FRAME HOME known as 486 W. Main Street, Borough of Elizabethville, Dauphin County, having a frontage of 90', more or less, and a depth of 150', more or less - First floor consists of KITCHEN & 2 ROOMS - Second floor has 3 BEDROOMS & BATHROOM - THERMOTRON OIL HOT WATER FURNACE. For additional information or inspection phone 758-6004. Real Estate will be offered at 1:00 P.M.

ANTIQUES & COLLECTIBLES

Jelly Cupboard w/Original Grained Paint; Walnut 1-Pc. Arch-Top Glass-Door Corner Cupboard, Circa 1900; Dovetailed Blanket Chest w/ Original Paint & Bracket Feet; Walnut Blanket Chest w/Maple Inlay; Low Dry Sink w/Original Graining; Oak Furniture such as Sellers Kitchen Cabinet, 2 Square Extension Tables, Clotheshree & Treadle Sewing Machine; Set of 6 Half-Spindle Plank Bottom Chairs; Set of 5 Boot Jack-Back Plank Bottom Chairs; 2 Plank Bottom Rockers; Pressed Back Rocker; Plank Bottom Nursing Rocker; Mortised Bench; Meat Bench; 6-Pc. Waterfall Bedroom Suite; 4-Pc. Depression Era Bedroom Suite; Flat-Top Trunk; 3 Miniature Blanket Chests (2 w/Inlay); Assorted Crocks & Jugs Including Cowden & Wilcox Blue Decorated Crocks & H.T. Miller, Newport 1 1/2 -Gal. Crock w/Blue Decoration; Necco Candy Jars; Yellowware Mixing Bowl; Bracket Light; 2 Hickory Baskets; 2 Cast Iron Frog Door Stops; Kerosene Lamps; Cuckoo Clock; Gold Leaf Frames & Wall Mirror; Kris Kringle Statue; Printed Birth Certificates; Solly Hulsbuck PA German Books; Butcher Ladles & Forks; Sadirons; Apple Peelers; 14 Quilts (Tree of Life, Dresden, Pinwheel, Etc.); Red & White Coverlet; Crazy-Patch Comforters; 4-Pc. Marigold Carnival Set (Butter Dish, Sugar, Creamer & Spooner); Late Adams Rose Plates; Moon & Star Covered Compote; Assorted Ruby Red, Depression, Pressed & Pattern Glass; Iris Water Set; Misc. Hall Pottery; Peanut Butter Glasses; Misc. Elgin Pocket Watches; Selection of Pocket Knives (Case, Barlow, Etc.); Arrowheads; Numerous Other Items!

1915 \$10 GOLD COIN HOUSEHOLD ITEMS

G.E. Refrigerator & Stove; Kelvinator Upright Freezer & Automatic Washer; Speed Queen Wringer Washer; Zenith Portable Color TV; 3-Pc. Living Room Suite; Mahogany Knee-Hole Desk; 4 Cedar Chests; Howe Safe; Costume Jewelry; Assorted Wooden Items made by Mr. Herman; Misc. Dishes, Pots & Pans Including Lg. Selection of Guardian Service Cookware & Homer Laughlin Virginia Rose Pattern Dishes; Etc.

TOOLS

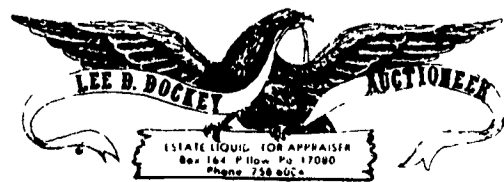
Delta 3' Turning Lathe; Sears Roebuck Bench Saw & 6" Joiner; Miter Box Saw; Electric Drills; Saber Saws & Router; Lg. Selection of Metal Wood Planes; Hand Saws; Levels; Slate Roofer's Tools; Tin Crimping Tools; Lg. Selection of Block & Tackles, Carpenter's Hand Tools, Nails, Screws, Bolts, Etc.; Small Speedy Air Compressor; Wooden Extension Ladders; Rotary Lawn Mower; 2 Rubber-Tire Wheelbarrows; ANTIQUE TOOLS; Large Wooden Carpenter's Bench; Tool Chests; Broad Axes; Barn Augers; Drill Auger; Slicks; Lg. Selection of Wooden Molding Planes; Adz; Blacksmith Tongs, Anvil & Forge; Numerous Other Items! (THIS IS AN ACCUMULATION OF CARPENTER'S TOOLS FROM 3-GENERATIONS. IF YOU'RE LOOKING FOR OLD TOOLS, PLAN NOW TO ATTEND THIS AUCTION. IMPOSSIBLE TO LIST EVERYTHING!)

TERMS: REAL ESTATE - 10% DOWN. FURTHER TERMS & CONDITIONS TO BE GIVEN DAY OF SALE. PERSONAL PROPERTY - CASH. PERSONAL CHECKS ACCEPTED ONLY FROM PERSONS HAVING AN ESTABLISHED ACCOUNT W/ AUCTIONEER OR APPROVAL PRIOR TO DAY OF AUCTION.

AUCTIONEER'S NOTE: THIS IS AN ACCUMULATION FROM SEVERAL GENERATIONS. THERE ARE MANY SMALL ITEMS, TOO NUMEROUS TO LIST! AUCTION WILL BEGIN W/ TOOLS & RELATED ITEMS. AT 9:00 A.M. THE SECOND AUCTIONEER WILL BEGIN SELLING HOUSEHOLD ITEMS, ANTIQUES & AN AUCTION YOU WILL ENJOY - SOMETHING FOR EVERYONE.

ATTORNEY, TODD A. HOOVER

AUCTIONEERS: DOCKEY #AU229L, DOCKEY #AU1683L & DEPPEN #AU1957L



PRIVATE SALE OF 460 HEAD

BOUNTIFUL FARMS, EASTON, MD.

40 HEAD OF HIGH GRADE HOLSTEINS

OFFICIAL DHIA HERD AVERAGE OF 19,180 MILK

These Cows Are Divided Into 6 Different Groups With Over 250 Head Due From June Until December. Over 100 Head In High Group Milking From 75 Lbs. Up To Well Over 100 Lbs.

Alot Of Cows Due In July And August Still Milking In The 60 Lbs. Level. Entire Herd Average Is 63 Lbs. Per Day. We Will Sell 1 Or All As Long As They Last. Must Be Moved By June 1, 1991. If You Want To Improve Your Herd Or Put A Top Herd Together This Is A Rare Opportunity. With Records Up To 28,000m And The Average Herd Age Is Just 36 Months.

For Any Information Call Shady Lane Dairy Sales Inc. All Health Tests In Last 30 Days. Pregnancy Examinations Are Up To Date By The Herd Vet.

Managed By:

SHADY LANE DAIRY SALES, INC.

23 Shady Lane, P.O. Box 673 Quarryville, Pa. 17566-0673

For More Information Contact:

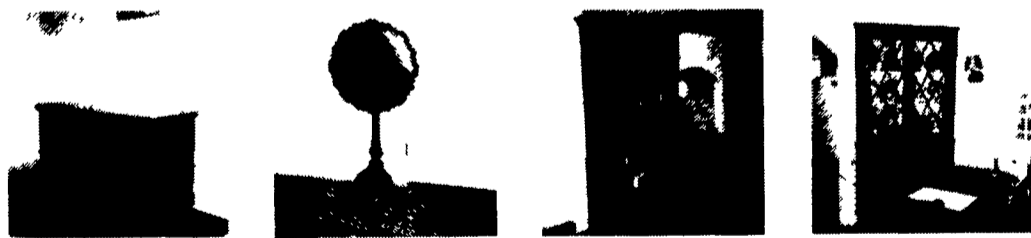
Glenn D. Fite 717-786-2750

David L. Fite 717-786-1725

OUTSTANDING PUBLIC AUCTION

SAT., MAY 18, 1991 @ 9:00 A.M.

Location: Village of Robesonla, Berks Co., Pa. East end of Village on Rt. #422 turn onto N. Linden St., Auction @ 117 N. Linden St., 10 miles West of Reading, 20 miles East of Lebanon, PA.



Decorated ornate blanket chest dated 1786, with wrought iron hinges; Jamestown cherry dropleaf table w/5 chairs; large secretary desk, double door w/16 panes, comb-back Windsor chair; Hepplewhite swingleg inlaid card table; asst. rush seat chairs; nice pie crust tilt-top table; round empire table w/pedestal base; Virginia sofa; W. Guerin and Co. Limoges bird plates series (12); Minton china w/22 Karat trim service for 12, w/demitasse; walnut butterfly table; walnut refectory table, 3 drawers, circa 1790, (restored); 2 maple cane back bedroom suites; old spinning wheel; empire server w/glass top, claw feet; old corner cupboard w/double doors; misc. brass candlesticks; 4 thumb back chairs; bow back Windsor chair; wooden stand w/spool type legs; dovetail blanket chest; brass fireplace set w/claw feet; lg. copper kettle; iron stone pcs.; brown spatterware bowl; redware mold; leather bound classic books (Poe, Goethe, etc.); 2 pictures Midsummer Night's Dream; Seth Thomas clock, hexagon; old fishing rod; rush seat rocker; asst. small wooden stands and tables; small wooden stool; wooden empire stand w/drawer; wall sconces; old picture frames; old blue plates; misc. table and floor lamps; shelf clock, E. Keller and Sons, w/watch movement; other interesting items to be sold also.

Auctioneer's Note: This is an outstanding collection of fine antiques and collectibles in mint condition. Plan to attend.

Auction for ARDRE SCHANTZ

Auctioneer: Dwight D. Miller AU-002414-L

TERMS: CASH OR PA. CHECK, OR BANK LETTER OF CREDIT 717-933-5736

