

National Grain Market

St. Joseph, MO
May 8, 1991

GRAIN AND SOYBEAN PRICES CONTINUE LOWER WEDNESDAY. WHEAT STEADY TO 2 CENTS LOWER; CORN 4 TO 5 CENTS LOWER; SORGHUM 8 TO 10 CENTS LOWER; SOYBEANS 3 TO 5 CENTS LOWER. GRAIN MARKETS CONTINUE TO REACT FROM YESTERDAY'S FAILURE TO IMPLEMENT A CREDIT PACKAGE OFFER TO U.S.S.R DATE FOR A REVISED PROPOSAL MAY BE DELAYED UNTIL MIDDLE TO LATE JUNE RECENT HIGHER TRENDS IN GRAIN PRICES THOUGHT TO BE OVER DONE AND CORRECTIONS DUE, ALSO REASON FOR LOSSES IN GRAIN AND BEAN PRICES TRADERS AWAIT THURSDAY'S U.S.D.A. CROP PRODUCTION REPORT FARMERS RETURNING TO FIELDS AND CORN PLANTING, SOME USING CHEMICALS, NO-TILL PLANTERS AND SEEDING WET FIELDS EXPORT SALE ACTIVITY FOR GRAINS LIGHT EXCEPT FOR CHINA'S LARGE WHEAT PURCHASE. OFFERS FROM EGYPT, THE PHILIPPINES AND TAIWAN WILL HOPEFULLY GIVE STRENGTH TO MARKETS SOON.

EXPORT NEWS. CHINA PURCHASED 390,000 TONNES WHEAT FOR 91/92 MARKETING YEAR, 300,000 TONNES OF SOFT RED WINTER WHEAT AND 90,000 TONNES HARD RED WINTER WHEAT

DATE CHANGE YEAR AGO 05/08/91 05/07/91 05/09/90 WHEAT: KANSAS CITY 2.94-2.95 NC-DN 1 3.89-3.94 MINNEAPOLIS 3.08-3.14 UP 1/2-DN 3 1/2 4.18-4.22 PORTLAND 3.42 NC-DN 2 3 63-3.66 ST. LOUIS 2.90-2.93 DN 1 3.35-3.40

CORN, U.S. NO. 2 YELLOW: KANSAS CITY 2.49-2.53 DN 5 2.80-2.83 MINNEAPOLIS 2.45 DN 4 3/4 2.78 3/4 SO IOWA 2.49 1/2-2.52 1/2 DN 4 1/2 2.86-2.89 OMAHA 2.39-2.40 DN 5-4 2.72-2.73

SOYBEANS, NO 1 YELLOW: KANSAS CITY 5.82-5.86 DN 4 6.34-6.40 MINNEAPOLIS 5.80 1/2 DN 5 1/2 6.28 1/2 SO IOWA 5.82-5.87 DN 4-3 6.33-6.39 C. ILL. PROCESSORS 5.84

1/2-5.90 1/2 DN 4 1/2 6.43 1/2-6.52
*KANSAS CITY, US NO. 1 HARD RED WINTER WHEAT, ORDINARY PROTEIN. MINNEAPOLIS, US NO. 1 DARK NORTHERN SPRING WHEAT, 14% PROTEIN. PORTLAND, NO. 1 SOFT WHITE WHEAT, ST. LOUIS, NO. 2 SOFT RED WINTER WHEAT.
FUTURES CLOSE: KANSAS CITY (JULY) WHEAT 2.89 1/4 DN 1 3.56 3/4 MINNEAPOLIS (JULY) WHEAT 2.88 DN 1 1/2 3.69 1/2 CHICAGO (JULY) WHEAT 2.88 DN 1/4 3.49 1/2 (JULY) CORN 2.49 DN 4 3/4 2.90 3/4 (JULY) SOYBEANS 5.79 1/2 DN 4 1/2 6.59 1/2
EXPORT: BARGE OR RAIL, PORT OF NEW ORLEANS OR NORTH TEXAS GULF. NO. 1 HARD RED WINTER WHEAT ORDINARY PROTEIN 3.31 DN 1 4.17-4.22 NO. 2 SOFT RED WINTER WHEAT 3.13-3.16 NC 3.70-3.72 NO.2 YELLOW CORN 2.67-2.69 DN 5-4 3.14-3.16 NO.2 YELLOW SORGHUM RAIL 4.71 DN 9 BARGE 4.66 DN 8 5.16-5.12 NO.2 YELLOW SOYBEANS 6.08-6.09 DN 4 6.67-6.68.

Leinbach's Hay

Shippensburg, PA
May 4 and 7
Report Supplied by Auction
TOTAL LOADS: 55.
ALFALFA: 40.00-142.00.
MIXED HAY: 50.00-95.00.
TIMOTHY: 47.00-80.00
CLOVER: 50.00.
ORCHARD AND BROME GRASS: 40.00-72.50.
STRAW: 47.50-65.00.
EAR CORN: 85.00-87.00
OATS: 1.70 BU.
MULCH HAY: 30.00-37.50.

Good's Hay

Leola, Pa.
Wed., May 8, 1991
Report Supplied by Auction
95 LOADS.
ALFALFA: 75.00-156.00.
MIXED HAY: 54.00-139.00.
TIMOTHY: 60.00-120.00.
STRAW: 67.00-109.00.
CORN: 78.00-93.00.
GRASS: 72.00.
OATS: 2.00 BU.

Keister's Hay

Middleburg, PA
Tuesday, May 7
Report supplied by auction
64 LOADS HAY.
ALFALFA: 77.50-155.00.
MIXED HAY: 40.00-155.00.
STRAW: 2 LOADS, 77.50-85.00.
EAR CORN: 6 LOADS, 70.00-82.50.
OATS: 7 LOADS, 1.50-2.20 BU.

Belleville Hay

Wednesday, May 8
Belleville, PA
Report Supplied by Auction
TOTAL LOADS: 48 LDS. HAY.
ALFALFA. 72.50-132.50.
MIXED HAY: 25.00-90.00.
STRAW: 25.00-75.00.
EAR CORN: 77.50-85.00.

Greencastle Hay Market

Hay & Straw
May 2nd&6th, 1991
16 LOADS.
ALFALFA (FAIR) 72.00-97.00/TON.
ALFALFA MIXED 70.00-85.00/TON.
TIMOTHY HAY 65.00-90.00/TON.
MIXED HAY 41.00-71.00/TON.

Dewart Hay

Dewart, PA.
Monday, May 6, 1991
Report Supplied by Auction
14 LOADS OF HAY, 46.00-88.00.
STRAW: 1 LOADS, 40.00.

North Jersey Market

Hackettstown, N.J.
Tuesday, May 7, 1991
Hay—Straw & Grain Report
ALFALFA HAY: 2 LOADS, 2.25 AND 2 60 BALE.
MIXED HAY: 5 LOADS, 1.00-1.90 BALE.
TIMOTHY HAY: 1 LOAD, 1.50 BALE.
GRASS HAY: 7 LOADS, .70-1.40 BALE.
OAT STRAW: 1 LOAD, 1 60 BALE.
OATS: 1 LOAD, 6.25 BAG.
TOTAL: 17 LOADS.

Vintage Hay

Paradise, PA
Thurs., May 9, 1991
Report Supplied by Auction
2 LOADS.
WHEAT STRAW: 85.00.
ALFALFA: 2ND CUTTING 80.00.

Hackettstown Poultry & Egg

Hackettstown, N.J.
Tuesday, May 7, 1991
Report Supplied by Auction
HEAVY FOWL: .75-.90.
LIGHT FOWL: .55.
MIXED FOWL: .40-1.30.
CHICKS: EACH .15-.25 EACH.
BANTAMS: .95.
ROASTERS: .55.
FRYERS: .75.
PULLETS: .70.
ROOSTERS: .40-2.00.
BUNNIES, EACH: 1.50-5.25.

GEESE: .70.
GUINEA PIGS, EACH: 3.00.
DUCKS: 1.05-1.85.
RABBITS: 1.00-1.65.
PIGEONS: PER LB. 3.00-6.00.

WHITE EGGS: EXTRA LARGE & JUMBO .59-.81; LARGE .50-.70; MEDIUM .30-.50; PULLETS .25.
BROWN EGGS: EXTRA LARGE & JUMBO .78-1.03; LARGE .55-.85; MEDIUMS .35-.53; PULLETS .26.

New York And Philadelphia Frozen Egg Report

Tuesday, May 7, 1991
Prices trended lower on all items Trading was irregular. Raw materials increased in their availability. Most breakers easily maintained full or desired schedules. Floor stocks were in good balance to satisfy current trade requirements.
WHOLESALE SELLING PRICES (CENTS PER POUND IN 30 LB. CONTAINERS) TRUCKLOTS LTL (MIN. 25 CONT.) WHOLE 50-54 MOSTLY 52-53 54-60 BLEND (J) 63-70 WHITES 41-43 MOSTLY 42-43 44-52 SUGARED YOLKS (MIN 43% SOLIDS) 66-69 MOSTLY 67-68 69-76 SALTED YOLKS (MIN 43% SOLIDS) 59-63 MOSTLY 61-62 63-72 (J) - WHOLE PLUS YOLK PLUS SWEETENER, GENERALLY 28-32% EGG SOLIDS

CHESTER COUNTY HAY SALE

"The fastest growing brokerage in Chester County"

Buying & Selling All Types Of Hay & Straw

Satisfaction Guaranteed

For more information on an "A" rated brokerage

Call JOHN PRIMUS
215-384-1069

HOSTETTER PORK



Wanted To Buy Crippled and Disabled Sows and Boars

Hogs Slaughtered For Federal Inspection
PHONE 717-274-7609

HORSE SALE
FRI., MAY 17 - 7:00 P.M.
TACK 6 P.M.
HORSES HITCHED 12 NOON

NEW HOLLAND SALES STABLES INC. THE ACTION AUCTION

HERD DISPERSAL
Wed., May 15
36 Cows from Joel King, Gap, PA

REG. HEIFER SALE
Sat., June 1 - 10 A.M.

LIVESTOCK IS OUR ONLY BUSINESS

MONDAY

SLAUGHTER HOGS



EARLY BIRD HOG SALE
8:00 A.M.

Sell Your Hogs At New Holland Sales Stables, Inc.
See them weighed, sold and pickup your check.

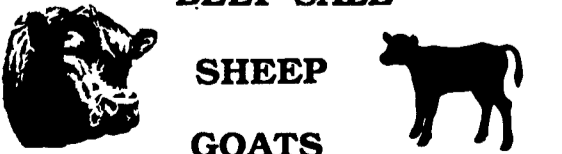
10:00 AM



HORSES
MULES

1:30 PM

BEEF SALE



SHEEP
GOATS

CALVES

WEDNESDAY

HEIFER SALE
11:00 AM

COW SALE 12:00 NOON



We have the usual run of 50 to 100 Heifers, all ages. Loads of fresh cows and springers from our regular shippers.
Also some local fresh cows and springers.

1:30 P.M.

FEEDER PIG SALE



Pigs are accepted after 6:30 A.M. State graded from 8 to 12 Dairy Barn and Feeder Pig Barn are cleaned and disinfected weekly for your protection.

THURSDAY

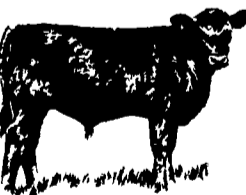
Beef Auction
10:00 A.M.

BULLS
STEERS
BEEF COWS



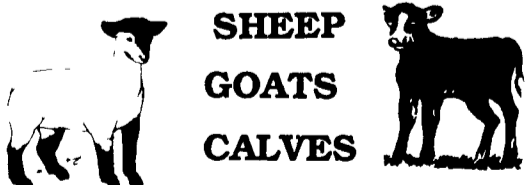
1:00 P.M.
STOCKERS

&
FEEDERS



12:30 P.M.

SHEEP
GOATS
CALVES



NEW HOLLAND SALES STABLES, INC.
12 Miles East of Lancaster Off Route 23, New Holland, Penna.

MANAGERS
Norman & David Kolb - 717-397-5538

Field Representatives
Luke Eberly - 215-267-6608 738-1865
Homer Eberly - 215-267-3047
Ron Ranck - 717-656-9849

Sale Barn Office Manager
Roger Floyd - 717-354-4341
FAX # 717-355-0706

Order Buyer
Paul Good - 215-445-6662