

Public Auction Register

Closing Date Monday 5:00 P.M.
of each week's publication

MAY

MON MAY 13 - 5:30PM,
Lawn & Garden Equip.,
Tractors, located at the
Cochran Auction Complex,
7704 Mapleville Rd.,
Boonsboro, MD, J. G.
Cochran, Aucls

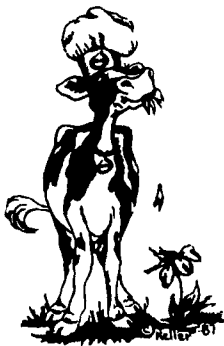
TUES MAY 14 - 6PM,
Tractor, Car, Bank Stock,
located along Snyder Rd.
off of Rt 616 between Blen
Rock and Seven Valleys,
PA, Wehrly's Auction,
Charles L. Wehrly and Son,
Aucls

THURS MAY 16 - 8:30AM,
Martin's 20th Annual
Spring Auction of Car-
riages, Coaches, Sleighs &
Antiques, located at Mar-
tins Sales Pavilion, corner
of Rt 340 and New Holland
Rd., two mil E of Inter-
course, Lanc Co., PA,
Martin Auctioneers

THURS MAY 16 - 1PM
200 Heifers and 250 Cows
at 7PM, at Shady Lane
Dairy Sales, Inc, located
23 Shady Lane, Quarryvil-
le, PA

THURS MAY 16 - 2PM,
Farm Equip., ATV, Tools,
Antiques, HH Goods,
located Fogelsville Auction
Center, W of Allentown, S
Nursery St., Fogelsville,
PA, Ralph W Zettlemoyer
Auction Co., Aucls

FRI. MAY 17 - 4PM and
SAT. MAY 18 - 9AM, 2 Day
Auction-HH, Antiques, 12
Pine Corner Cupboard,
Walnut Grandfathers
Clock/Regulator Clock,
Oak Furn., etc., located 4
mi N of Fogelsville & I-78
6 mi S. of Pleasant Corner
& Rt 309 off Rt 100 in the
village of Clausville, Lowhill
Twp., Lehigh Co., PA, Mr
and Mrs Wm Dotterer,
owners, Houser, Aucls

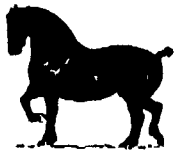


**Horse Sale
Friday Evening,
May 24, 1991**

Will hitch at 6:30 pm,
Sale at 7:30 PM

2 top standard bred trotters
3 Morgans - 25 Saddlebreds
**Beechdale
Blacksmith Shop**
Beechdale Road, Bird-in-Hand

**LATE
CONSIGNMENT
TO
NEW HOLLAND SALES
STABLES, INC.
HORSE SALE**



FRIDAY, MAY 17, 1991 7:00 P.M.

(See additional consignments page B45 this issue.)

**PAIR 5 YEAR OLD
1/2 BROTHER AND SISTER
BELGIANS, USED FOR
PARADES AND WEDDINGS.
WAGON AND HARNESS ALSO TO
BE SOLD.**

For more information call:
Norman or David Kolb 61L
717-354-4341 Barn Home 717-397-5538



**LIQUIDATION
AUCTION**

**THURSDAY, MAY 23, 1991
9:00 A.M.**

Located at 448 North Reading Road,
Ephrata, PA.

**MACK TRUCK TRACTORS,
DUMP TRUCKS, BACKHOES,
BLACK TOP PAVING
EQUIPMENT, SHOP TOLLS,
WOODWORKING TOOLS,
MACK ENGINE**

For complete brochure contact
auction firm.

Auction for **JAMES P. MAY**

- Auction Conducted By -
**J. Omar Landis
Auction Service**

Jay Witman AU-001127-L
Luke R. Witman

Phone: (717) 738-7900 or (717) 665-5735
Box 501 - Apple & Roberts Streets



SOMETHING TO
CROW ABOUT...

LOW
CLASSIFIED
RATES
WITH
EXCELLENT
RESULTS!

**Midway Farm Equipment
Dispersal**

Former AC Deutz Dealer Over
40 Years Affiliated With Allis Chalmers
Toy Tractors & Toy Farm
Equipment Collection &
Collectibles

Route 22, Hillsdale, N.Y.

Directions From Rte. 22 & 23 Intersec-
tion, Hillsdale, N.Y.: South 1 Mile To
Auction Site. 20 Miles South Of Rte. 22
Exit Interstate I-90.

Saturday, May 25, 1991

10 A.M. Rain Or Shine 10 A.M.

Farm Toys • AC Manuals • Parts
Books • Antique Signs

• Banners • Antiques • Collectibles

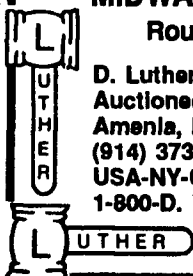
Toys: Partial listing includes very rare
Mayrath 52" Salesman scale model elev;
rare AC pedal tractor wagon NB; IH Cub
Cadet with snowplow & Cart; 1/16 scale
includes Case IH Magnum 1987 Denver
limited edition, NB; AC WD 45 collector's
edition, NB; AC-B Toy Tractors Time Edi-
tion, NB; Ford 8N wide front & 3-pt., exc.;
GP cast iron, exc.; JD 150th Anniversary
limited edition collector's set, NB; JD 4450
75th Anniversary Syracuse Branch, NB;
JD 420 dozer w/blade, yellow, exc.; JD
1915 Model R Waterloo Boy, NB; Case SC
w/fenders, orange plastic, NB; IH Farmall
M, plastic, mfg. Kemp of Canada, good; IH
Farmall spreader tractor w/solid tires,
good; JD mounted picker fits 60 or 620,
exc.; JD loader fits 60 or 620, exc.; JD
grain drill, green lid, good; JD 4-bottom
3-pt. plow with wrap coulters, exc.; JD 14T
baler with metal p.u. teeth; JD hay loader,
original vindex, rare, exc.; 2 JD combine
pull type with canvas belt, exc.; MH 44 nar-
row front with driver reel, exc.; NI 1-row
plastic picker, unmarked tires; Oliver baler
with motor power, exc.; Oliver combine,
yellow reel; exc.; Oliver 77 row crop,
narrow front with driver, exc.; AC tractor 70th
Anniversary calendars 1914 to 1984;
Bicentennial collector prints 20-16; AC
mud flaps, 2 AC clocks, working condition;
signs; banners; manuals; books from
1930's to present; AC Showman machine
w/20 AC products dating back to 1970's.
ANTIQUES & COLLECTIBLES include a
50-drawer wood store sideboard, 6'x12';
Coke machine and bottle rack, 1940 vin-
tage; Tydol Flying A 5-1/2' round gasoline
sign; Marquette Model A floor jack; Weav-
er 20-ton press #D5420 pat'd. 4/25/1916;
Bowes Seal Fast Indianapolis 8-drawer
cabinet; Bear automatic wheel aligner,
pat'd. 11/26/1916; Anniversary banners;
calendars; AC prints; promotional para-
phernalia and we're still sorting over 40
years of collecting.

Shop tools & parts sell at 10 a.m.; Toys,
antiques & collectibles sell at 12:30
p.m.; Tractors & machinery sell at 2:30
p.m.; the balance of shop after
machinery.

**Terms of Sale: Cash or good check day
of sale. New buyers must present a
bank letter guaranteeing payment if
paying by check.**

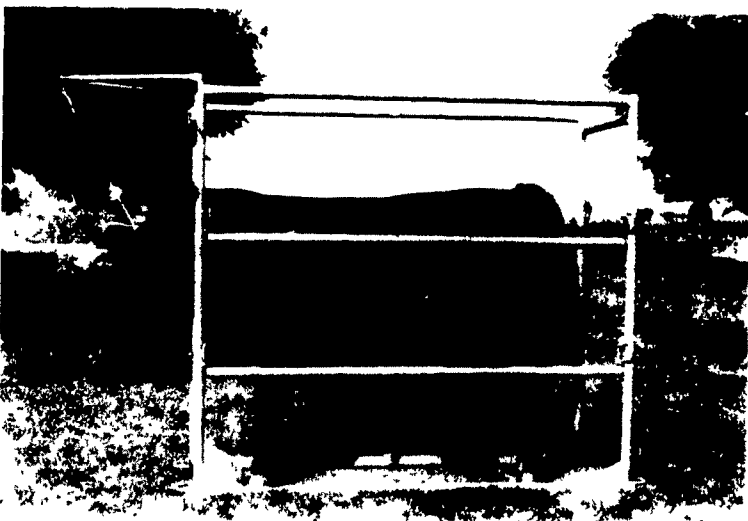
Sale By Order Of:
MIDWAY FARM EQUIPMENT
Route 22, Hillsdale, N.Y.

D. Luther
Auctioneer, Appraiser
Amenia, N.Y. 12501
(914) 373-9900/8215
USA-NY-CANADA TOLL FREE:
1-800-D. LUTHER



**PAUL B. Zimmerman
INC.**

GROOMING CHUTE



- Coated with baked on TGIC Polyester Urethane Powder
- For safe and easy grooming, washing and clipping cattle
- Expanded metal floor stays cleaner and gives more traction
- Assembles and disassembles quick and easy
- Can easily be moved and loaded by one person

PAUL B. ZIMMERMAN, INC.

Call or Write For
Additional Information
And Your Nearest Dealer

295 Woodcorner Rd
Lititz, PA 17543
1 Mile West of Ephrata
Phone: 717-738-1121

**PUBLIC SALE
OF VALUABLE 31.4 ACRE FARM
OF THE HARRY S. DEHOFF ESTATE
SATURDAY, JUNE 15, 1991
AT 1:00 P.M.**

LOCATION: Along Lewisberry Rd. In
Conewago Twp., York Co., PA. From I-83
Exit #11 (Emigsville Exit) Take Rt. #238
West (Church Rd.) To Stop Sign & Turn
Right. Follow Rt. #295 North (Susquehanna
Trail) To Canal Rd. & Turn Left. Proceed
Approx. 1 Mi. To Lewisberry Rd. & Turn
Right. Proceed Approx. 1 Mi. To Sale Site.
Follow Signs!

1:00 P.M. REAL ESTATE 1:00 P.M.

This attractive approx. 31.4 acre farm is
situated in Conewago Twp. Northeastern sch.
dist., & has approx. 25 tillable acres. Con-
veniently located just minutes from I-83 with
approx. 1/2 mi. road frontage along Lewisberry
& Butter Rds. Building lot rites possible upon
meeting twp. specifications. Property is zoned
agricultural & is in Clean & Green. Utility
right-of-way running thru property. The eye-
catching 2 1/2 -story old stone farmhouse w/tin
roof sits adjacent to a later addition 2-story
frame summer house. The stone house con-
sists of 3 BR upstairs, 3 rooms (1 large & 2
smaller) downstairs & a ground cellar. All
rooms have deep window sills. The summer
house contains a full bath w/shower only & 1
BR upstairs, kitchen downstairs, cement base-
ment, oil furnace, hot water-baseboard heat. 2
wells- 1 drilled & 1 hand-dug. Septic tank.
Outbuildings include an efficient 50'x40'
large fully-cemented barn w/large cement
block feed trough & w/attached 34'x16' 3-bay
garage. A 32'x22' 3-car cement block garage
w/cement floor. A round cement-floor corn
crib & a small milkhouse. Property will be
sold as is & is recorded in York Co. Court-
house Deed Book 58Q pg 376.

Inspection of property by appt. only call
717-764-4166 or call auctioneer at
717-757-5130.

TERMS: \$10,000.00 down day of sale in
cash or certified check only, with balance
due in 90 days. Out of state buyers must
have current bank letter of credit unless
known by auctioneer!

AUCTIONEER'S NOTE: An excellent
average-size farm for cattle or horses in a
nice farming community. Must see to
appreciate! Call today!

OWNER:

DELLA DEHOFF
Dover, PA

AUCTIONEERS: Melvin Haines

Ralph Brenneman
717-757-5130 or
717-741-1728
LIC #379L 708L

ATTORNEY: John M. Garber
Not Responsible For Accidents
Day Of Sale!
CLIP & SAVE!