



State Graded Feeder Pig Sale
at Westminster
Livestock Auction
May 3, 1991

499 PIGS. 2 WEEKS AGO 674; COMPARED TO LAST SALE PRICES WERE 5.00-15.00, HIGHER EXTREMES 25.00 HIGHER. ALL PIGS WEIGHED ON ARRIVAL AND SOLD BY THE HUNDREDWEIGHT.
GRADE 1: 30 HEAD 38 LBS. 151.00; 15 HEAD, 48 LBS. 150.00; 65 HEAD 50-54 LBS. 128.00-140.00; 9 HEAD 47-54 LBS. 146.00-149.00; 57 HEAD 61-69 LBS. 106.00-115.00; 11 HEAD 60-70 LBS. 120.00-135.00; 9 HEAD 73-85 LBS. 98.00-101.00; 2 HEAD 83 LBS. 107.00.
GRADE 1 AND 2: 9 HEAD 27-37 LBS. 128.00-130.00; 172 HEAD 41-48 LBS. 132.00-140.00; 95 HEAD 50-59 LBS. 115.00-123.00; 18 HEAD 71 LBS. 103.00; 4 HEAD 81 LBS. 91.00.
NEXT GRADED SALE MAY 17, 1:30 P.M.

New Holland Feeder Pigs
May 8, 1991

TODAY 639
LAST WEDNESDAY 862
LAST YEAR 1046
TREND: Compared to last Wednesday feeder pigs 8.00-12.00 higher, instances 20.00 higher. All pigs weighed on arrival and sold by the hundred weight.
GRADE HEAD WEIGHT PRICE US 1-2 63 31-35 128.00-146.00. 120 40-49 120.00-128.00. 105 50-59 120.00-132.00. 6 62 106.00.
US 2 37 34-39 120.00-128.00. 83 40-49 114.00-120.00. 43 50-54 106.00-118.00. 16 60-66 88.00-92.00.
US 2-3 12 30-39 112.00-122.00.
SLAUGHTER 28 15-21 197.00-222.00. 38 27-29 144.00-155.00.

Lancaster Hogs
Lancaster Stockyards
Sat., May 4, 1991
Report supplied by auction

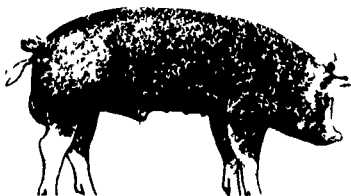
350 HEAD.
US 1 215-245 LBS. 56.00-57.75.
US 1-2 215-245 LBS. 52.00-54.25.
US 1-3 215-245 LBS. 50.50-52.00.
US 2-4 215-255 LBS. 49.50-50.50.
GOOD SOWS: 44.00-46.00.
MEDIUM SOWS: 40.00-44.00.
THIN SOWS: 35.00-40.00.
BOARS (ALL WEIGHTS): 37.00-39.50.

Indiana Hogs
May 9, 1991

BARROWS AND GILTS: FULLY .50 HIGHER; DEMAND GOOD TO VERY INSTANCES TO 1.00 HIGHER. GOOD. COUNTRY: PLANTS: US 1-2 220-260 LBS. 52.25-54.00, 52.75-54.00 FEW DOWN TO 52.00. 210-220 LBS. 50.00-51.50
US 1-3 220-260 LBS. 51.00-52.50
SOWS: UNDER 500 LBS. STEADY; OVER 500 LBS. STEADY TO 1.00 LOWER.
US 1-3 300-500 LBS. 38.50-44.00
500-650 LBS. 43.00-46.00, FEW TO 47.00.

New Holland Hog Auction
Lancaster, Pa.
Monday, May 6, 1991

Hog Receipts:
Today 681
Last Monday 584
Last Year 931
TREND: Compared to last Monday barrows and gilts 2.50-3.00 higher.
BARROWS AND GILTS: US 1-2 210-245 lb 54.00-55.25, One lot 55.75.
US 1 215-240 lb 57.25-58.25.
US 1-3 220-260 lb 51.00-54.00.
US 3-4 Couple lots 250-260 lb 46.00-47.00.



Regional Hay
May 6, 1991
Eastern, Pa.

HAY & STRAW MARKET FOR EASTERN PA. - (ALL HAY NO. 2 AND BETTER, PRICES PAID BY DEALERS AT THE FARM & PER TON). HAY & STRAW STEADY.
ALFALFA 70.00-100.00, FEW REPORTED 130.00; MIXED HAY 50.00-90.00; TIMOTHY HAY 50.00-70.00; STRAW 40.00-70.00; MULCH 20.00-35.00.
SUMMARY OF LANCASTER CO. HAY AUCTIONS FOR WEEK ENDING 5/3/91. PRICES PER TON: LOADS: 221 HAY, 59 STRAW, AND 18 EAR CORN.
ALFALFA 85.00-152.00; MIXED HAY 53.00-150.00; TIMOTHY HAY 75.00-150.00; STRAW 57.00-102.00; EAR CORN 77.00-90.00.

SUMMARY OF CENTRAL PA. HAY AUCTIONS FOR WEEK ENDING 5/3/91. PRICES PER TON: LOADS: 143 HAY, 16 STRAW & 11 EAR CORN.
ALFALFA 70.00-135.00; MIXED HAY 47.00-100.00; TIMOTHY HAY 45.00-87.50; STRAW 48.00-80.00; MULCH 74.00-90.00.

Diffenbach Auction Center

New Holland, Pa.
Monday, May 6, 1991
Report Supplied by Auction
TOTAL LOADS: 107.
ALFALFA: 60.00-167.00.
MIXED HAY: 54.00-145.00.
TIMOTHY: 55.00-137.00.
STRAW: 65.00-122.00.
EAR CORN: 86.00.
OATS: 2.00-2.30.

This sale was formerly held at the New Holland Sales Stables. It is now held at Diffenbach's New Holland Auction Center Ltd., 100 W. Jackson St., New Holland, across from the prior sale location. Auction time is 10:00 a.m. Monday.

Pa. Grain

Monday, May 6, 1991
Report supplied by PDA
COMPARED WITH LAST MONDAY'S MARKET FOR SOUTHEASTERN, CENTRAL, AND SOUTH CENTRAL PA: CORN AND BARLEY STEADY TO .05 LOWER; WHEAT, OATS AND EAR CORN MOSTLY STEADY; SOYBEANS STEADY TO .10 LOWER.
SOUTHEASTERN PENNSYLVANIA CORN NO. 2-Y RANGE 2.65-2.90, AVERAGE 2.80, *CONTRACT FOR HARVEST 2.47-2.69; @WHEAT NO. 2 RANGE 2.60-2.85, AVERAGE 2.74, *CONTRACT FOR HARVEST 2.72-2.97; BARLEY NO. 3 RANGE 1.90-2.20, AVERAGE 2.02, *CONTRACT FOR HARVEST 1.70-2.00; OATS NO. 2 RANGE 1.30-1.60, AVERAGE 1.47, *CONTRACT FOR HARVEST 1.10-1.25; SOYBEANS RANGE 5.58-5.90, AVERAGE 5.71, *CONTRACT FOR HARVEST

5.71-5.91; FEW REPORTED GR. SORGHUM #2 RANGE 2.35, AVERAGE 2.35, *CONTRACT FOR HARVEST 2.35; EAR CORN RANGE 75.00-85.00, AVERAGE 78.77.

SOUTH CENTRAL PENNSYLVANIA CORN NO. 2-Y RANGE 2.60-2.80, AVERAGE 2.71, *CONTRACT FOR HARVEST 2.35-2.89; @WHEAT NO. 2 RANGE 2.30-2.65, AVERAGE 2.50; BARLEY NO. 3 RANGE 1.85-2.20, AVERAGE 2.07; OATS NO. 2 RANGE 1.25-1.50, AVERAGE 1.34; SOYBEANS NO. 1 RANGE 5.63-5.64, AVERAGE 5.64; EAR CORN RANGE 65.00-75.00, AVERAGE 72.50.

SOUTHEASTERN, CENTRAL & SOUTH CENTRAL SUMMARY CORN NO. 2-Y RANGE 2.65-2.90, AVERAGE 2.76; @ WHEAT NO. 2 RANGE 2.40-2.85, AVERAGE 2.64; BARLEY NO. 3 RANGE 1.85-2.25, AVERAGE 2.04; OATS NO. 2 RANGE 1.25-1.60, AVERAGE 1.43; SOYBEANS NO. 1 RANGE 5.45-5.90, AVERAGE 5.70; EAR CORN RANGE 70.00-85.00, AVERAGE 76.34.

CENTRAL PENNSYLVANIA CORN NO. 2-Y RANGE 2.70-2.85, AVERAGE 2.76; @WHEAT NO. 2 RANGE 2.40-2.85, AVERAGE 2.62; BARLEY NO. 3 RANGE 1.85-2.25, AVERAGE 2.03; OATS NO. 2 RANGE 1.30-1.50, AVERAGE 1.43; SOYBEANS NO. 1 RANGE 5.45-5.80, AVERAGE 5.68; EAR CORN RANGE 70.00-79.00, AVERAGE 74.92.

WESTERN PENNSYLVANIA CORN NO. 2-Y RANGE M 2.50-2.75, AVERAGE 2.61; @WHEAT NO. 2 RANGE 2.50-2.64, AVERAGE 2.59; BARLEY NO. 3 RANGE 1.90-2.04, AVERAGE 1.97; OATS NO. 2 RANGE 1.20-1.60, AVERAGE 1.47; SOYBEANS NO. 1, RANGE 5.55, AVERAGE 5.55; EAR CORN RANGE 55.00-62.00, AVERAGE 58.50.

MONTH AGO CORN NO. 2-Y 2.71; @WHEAT NO. #2 2.67; BARLEY NO. 3 2.05; OATS NO. 2 1.45; SOYBEANS NO. 1 5.73; EAR CORN 74.65.

YEAR AGO CORN NO. 2-Y 3.05; @WHEAT NO. #2 3.72; BARLEY NO. 3 2.15; OATS NO. 2 1.67; SOYBEANS NO. 1 5.95; EAR CORN 82.93.

Diffenbach Auction Center

New Holland, Pa.
Wednesday, May 8, 1991
Report Supplied by Auction
TOTAL LOADS: 14.
ALFALFA: 75.00-90.00.
MIXED HAY: 50.00-77.00
TIMOTHY: 50.00-100.00.
STRAW: 99.00-105.00.
This sale was formerly held at the New Holland Sales Stables. It is now held at Diffenbach's New Holland Auction Center Ltd., 100 W. Jackson St., New Holland, across from the prior sale location. Auction time is 10.00 a.m. Wednesday.

Kirkwood Hay Auction

Kirkwood, Pa.
Tuesday, May 7, 1991
Report Supplied by Auction
80 LOADS OF HAY.
MIXED HAY: 1ST CUTTING 40.00-80.00, 2ND CUTTING 61.00-86.00.
TIMOTHY: 27.00-95.00.
ALFALFA: 1ST CUTTING 51.00-87.00, 2ND CUTTING 80.00-110.00, 3RD CUTTING 81.00-110.00.
CLOVER: 1ST CUTTING 50.00-67.00, 2ND CUTTING 76.00.
GRASS: 40.00-95.00.
WHEAT STRAW: 68.00-105.00.
BARLEY STRAW: 80.00-85.00.
BARLEY STRAW: 72.00-85.00.
MIXED STRAW: 74.00-84.00.
EAR CORN: 70.00-106.00.
PAPER BEDDING: 30.00.
CORN FODDER: 1 LOAD AT 45.00.

Frederick Co. Hay

Buckeystown, Md.
Thursday, May 9, 1991
Report Supplied by Auction
7 LOADS. RAIN. MARKET ABOUT STEADY.
ALFALFA: 1 LOAD 100.00.
ALFALFA MIX: 2 LOADS DARK 43.00 AND 48.00.
MIXED HAY: 2 LOADS FAIR 40.00 AND 43.00.
STRAW: OATS 2 LOADS 60.00 AND 64.00.
NOTE: MAY 30 WILL BE LAST SALE FOR SPRING.

Westminster Hay

Westminster, Md.
Tuesday, May 7, 1991
Report Supplied by Auction
TOTAL LOADS: 68.
ALFALFA: 80.00, 1.80-2.30 BALE.
ALFALFA MIX: 1.00-1.60 BALE.
TIMOTHY: 70.00-82.50, .60-1.60 BALE.
TIMOTHY MIX: 75.00, .60-1.40 BALE.
TIMOTHY ROUND BALES: 6.00-9.00 EACH.
ORCHARD GRASS. .60-1.90 BALE.
GRASS HAY: .90-1.60 BALE.
STRAW: 97.50-100.00, .95-1.60 BALE.
MULCH: .30-.40 BALE.

Green Dragon Hay

Ephrata, Pa.
Friday, May 3, 1991
Report Supplied by Auction
TOTAL LOADS: 70.
MIXED HAY: 50.00-130.00.
ALFALFA: 70.00-150.00.
TIMOTHY: 48.00-140.00.
CLOVER HAY: 57.00.
GRASS: 49.00 AND 122.00
STRAW: 47.00-101.00.
EAR CORN: 77.00-86.00.
OATS: 1.90 BU.



Walter M. Dunlap and Sons offers all cattle feeders two marketing days - Give us a call for advice and marketing conditions.

MONDAYS OR WEDNESDAYS

Consign With Us - For The Marketing Edge

Consign Your Beef Cows
Mondays and Wednesdays
No Waiting To Unload - Good Weight Conditions

Next Feeder Cattle Sale
Friday, May 17 - 11:00 A.M.

Walter M. Dunlap and Sons
Lancaster Stockyards
Tel. (717) 397-5136

An Old Line Commission Firm Keeping
Abreast With The Times

HOOVER'S HAY AUCTION

2nd & 4th Fridays Of Each Month
12 Noon
Sellers to call to schedule loads.
Located in Dauphin Co., 1 mile east of Gratz, along Rt. 26.
Gerald Hoover,
#AU-002794L
717-365-3803

KIRKWOOD HAY AUCTION

Hay, Straw and Grain Auction
EVERY TUESDAY
12:00
Located Rt. 472 5 miles south of Quarryville or 6 miles north of Oxford corner of Rt. 472 and Noble Road.
Lloyd H. Krelder,
Auctioneer
AU-000513L
No out of state checks

In this issue

Four Sections

FEATURES

Irwin Retirement..... A19
Alfalfa Grazing A32
Rural Youth..... A34
Berks Co. Dairy Pageant.... A28
Strawberry Lady..... B14
Herb & Flower Gardens..... B16
Couple Farms Organically... B25

HOME AND YOUTH

Homestead Notes B 2
Home On The Range B 6
Cook's Question Corner B 8
Kid's Korner B10
4-H Happenings B17

DAIRY

DHIA Focus A25
Dairy Pipeline A35
Cumberland Co. DHIA C 7
Potter Co. DHIA C 8
Clearfield Co. DHIA C 8
Snyder Co. DHIA C12
Union Co. DHIA C14
Lycoming Co. DHIA D 3

COLUMNS

Now is the Time..... A10
Microwave Minutes B 4
On Being A Farm Wife..... B 5
Taking Time..... B12
Have You Heard B13
Ida's Notebook..... B13
Poultry Pointers..... C 2
Beef Briefs C 5
Swine Management..... C 9

DEPARTMENTS

Editorial A10
Farm Calendar..... A10
Farm Forum A10
Mailbox Markets..... B18
Sale Reports B26
Public Auction Register B30
Business News C 6
Classified Ads C17