

Deadline Nears For Entry Into New 4-H Program

(Continued from Page A24)
 others hold carcass evaluations, but its never been combined.
 "In terms of raising animals for just a show, we give them (4H members) certain (hog) weights they have to meet. In this program, the animals are weighed-in and weighed-off, and we use that as part of the formula in giving a final

ranking.
 "We will also be making carcass measurements and that will also be a part of the formula. Actually, the formula itself is the National Pork Producers Council's Lean Gain formula."
 The derby is also different from typical hoof and rail competitions and others that have been put on to

date.
 "In the hoof and rail, you judge on hoof and rail — it doesn't matter how efficiently it was grown. (The derby) is designed basically to incorporate all facets of the industry."
 "The youth are required to keep a record of their feed used and to calculate feed efficiency of their animals in order to be placed in the program," he said.

The only difference between the derby and real production management is determining efficiency of cost-to-profit. However, Winebark said, "It's something they can still do. That's part of their project book. But that won't be taken into any consideration here."

The other thing taken into account in the final judging formula is the structural conformation score and that will be used from the standpoint of testing overall soundness and structural correctness in the animal. Adjustments will be made according to a five-point scale.

Scores ranging from one to five points will be given to each hog to represent their structural soundness. A score of five points represents a virtually flawless hog. The actual scores are to be awarded at 7:30 p.m. on August 21 at the Lebanon Area Fairgrounds.

A panel of three judges will score the hogs. The judges represent a different sector of the production industry — a packer, a breeder, and an educator.

For this first derby, the judges

are to be Doug Clemens from Hatfield Quality Meats Inc.; Henry Holloway, a breeder and also former fieldman for the York, Hampshire and Chester Association; and Keith Bryan, the coach of the Penn State University livestock judging team.

In addition, Winebark said there will be a separate panel of judges making selections of the animals on foot. Those judges are yet to be determined.

The need for a panel of judges for the on-foot selection is to better represent real-industry values.

"Instead of one judge's selection determining the top animals, we're looking for an animal selection that is more representative of what the industry wants," Winebark said.

There are also additional benefits to the derby for those who participate, Winebark said.

"We plan, on that day (of the carcass evaluation, August 23, at Stoltzfus Bros. Meats, in Intercourse), of doing some ultrasound scanning of the animals to teach how its done and the reasoning, and so that we can compare the results with the actual carcass data.

Stoltzfus will slaughter and purchase all animals and premiums will be awarded to all hogs in the program with special awards presented to winners.

All hogs are to be slaughtered free to participants and purchase

price from Stoltzfus is to be on a grade and yield basis.

"We'll be having an evening meeting on August 23 for the exhibitors and any others interested, to look at the carcasses, and to present the awards," Winebark said.

Entry blanks are available from local county extension offices. Checks should be made payable to: South East PA 4-H Market Derby.

Testing Methods

(Continued from Page A25)

in testing teat dips.
 Be aware that federal regulations do not require efficacy data on teat dip products. Therefore, teat dips can be manufactured and marketed without demonstrating effectiveness.

In this "buyer beware" market, the consumer is responsible for determining whether a particular product has been tested and proven effective. Before using or recommending a particular product, request written information from the manufacturer or dealer on compliance with federal regulations and results of controlled research studies showing effectiveness.

This article is one in a continuing series made available by the National Mastitis Council. For additional information, contact the NMC, 1840 Wilson Blvd., Arlington, VA 22201; (703) 243-8268.



Kenneth Winebark, Lebanon County extension agent, weighs in a feeder pig entry for the new Southeast Pennsylvania 4-H Market Hog Derby, while Daryl Bomgardner and brother Craig look on.

Hampshire Field Day Sat.

WELLSBORO (Tioga Co.) — The Pennsylvania Hampshire Sheep Association will hold their annual field day on Saturday, May 18 here at the Tom Nickeson farm.

The field day will include a farm tour, lamb barbecue, brief meeting, showmanship and judging contests, and Grand Canyon tour. The field day will begin at 11 a.m.

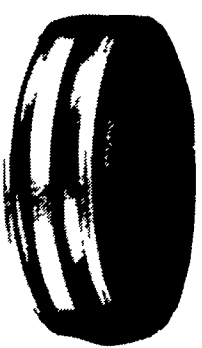
Everyone interested in Hampshire sheep is invited to attend the field day to learn more about the breed and meet other people who are interested in Hampshires.

For more information about the field day, contact Sarah Fleener (215) 589-2588 or Tom Nickeson (717) 724-5451.

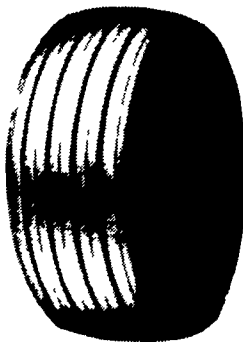
COMPLETE FARM TIRE LINE



Rear Tractor Tires

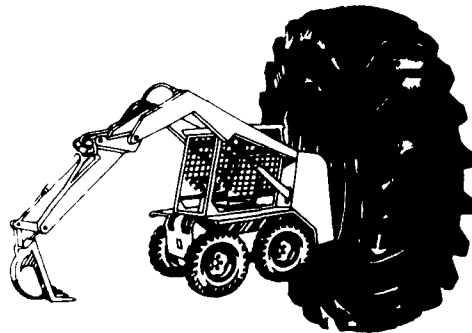


Front Tractor Tires



Skid Loader Tires

All Sizes
 And Types
 Of Tires
 Available At
 Discount Prices



- Fast On-The-Farm Service
- Radio Dispatched Service

LEOLA TIRE SERVICE, INC.
 717-656-2574 258 W. MAIN ST., LEOLA, PA



**MILK.
 IT DOES A
 BODY GOOD.**



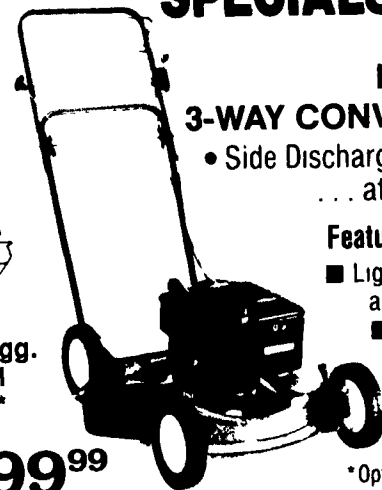
MILK. IT DOES A BODY GOOD.
 MIDDLE ATLANTIC MILK MARKETING ASSOCIATION, INC

HOMELITE SPECIALS



Mfg. Sugg. Retail Price*

\$299⁹⁹



**HSD20
 3-WAY CONVERTIBLE MOWER**
 • Side Discharge • Mulch • Rear Bag
 ... at your option*

Features:

- Lightweight die-cast aluminum no-rust deck
- Adjustable handles for comfort
- Dependable Briggs & Stratton engine

*Optional Rear Bag Kit Mulching Kit

Chosen "Best Buy" by a Leading Consumer Magazine

**1-STEP
 MOWING**

Mfg. Sugg. Retail Price*

\$349⁹⁹



**HM20
 MULCHER**

- NO CLIPPINGS!
- NO RAKING!
- NO BAGGING!

Features:

- Easy Start Briggs & Stratton Quantum Engine
- Lightweight die-cast aluminum no-rust deck
- Exclusive twin blade cutting action

MOWERS ALSO AVAILABLE SELF-PROPELLED

*Price Subject To Dealer Option

HENRY B. HOOVER, INC.
 1731 W. Main St.
 Ephrata, PA 17522
 717-733-6593

EM HERR
 Rt. 272
 Willow Street, PA 17584
 717-464-3321

JOHANNING'S
 2460 New Holland Pike
 Lancaster, PA 17602
 717-656-3700

MARTIN'S LAWN & GARDEN
 Rt. 23 - Main St.
 Goodville, PA 17528
 215-445-5103

WES STAUFFER
 23 Pleasant Valley Rd.
 Ephrata, PA 17522
 717-738-4215

