

Leola Produce Auction

Leola, PA
 May 7, 1991
 Report Supplied by Auction
 APPLES: 2.50-3.75 1/4 BU.
 ASPARAGUS: .85-1.40 12 OZ. BUNCH.
 SPRING ONIONS: 10.00-14.50 40 CT. BUNCH.
 POTATOES: (OLD) 3.00-6.00 50 LBS. US#1.
 RADISHES: 8.00-12.00 40 CT. BUNCH.
 RHUBARB: 3.50-4.75 15 LBS. BUNCH.
 SPINACH: 8.00-11.00 1 1/9 BU.
 TOMATOES: (GREENHOUSE) 35.00-48.00 25 LBS. #1.
 WATERCRESS: 4.00-8.00 1/4 BU.
 FLOWER BEDDING PLANTS: 4.00-6.75 FLAT; HANGING BASKETS 4.50-7.75 EACH.
 GERANIUMS: 1.25-1.50 EACH.
 PLANTERS: 7.00-12.00 EACH.
 VEGETABLE PLANTS: ASSORTED 5.50-7.50 FALT.
 HERBS: 4.00-7.50 FALT.
 SALE DAYS NEXT WEEK ARE MON., TUES., THURS. AND FRI. 11 A M

LARGE POTTED PLANTS: 3.50-8.00 EACH.
 SMALL POTTED PLANTS: .50-2.50 EACH.
 SHRUBS, TREES: 4.00-12.50 EACH.
 RHUBARB: 4.00-6.00 1/4 BU.
 RADISHES: 5.00-7.25 1/4 BU.
 VEGETABLE PLANTS: 3.00-7.50 FALT.
 WATERMELONS: 4.25-4.60 EACH.

Leesport Livestock
 Leesport, PA
 May 8, 1991

CATTLE 277...PDA... Supply included 144 head steers and heifers... Compared to last Wednesday's market: Slaughter steers .25 to 1.50 lower; Cows .50 to 2.00 higher. Choice 1150/1400 lbs. sl. steers 74.75-78.25, one 79.75, Select 70.00-74.50, few Standard 64.75-68.00; Choice Holsteins 68.25-72.75, couple 74.25, Select 63.50-67.00. Choice sl. heifers 73.00-76.75, few Select 69.50-73.75; few Choice Holsteins 59.00-65.25. Breaking Ut. & Commercial sl. cows 55.00-59.50, few 62.25, Cutter & Boning Utility 52.75-57.75, few 59.50, Canner & low Cutter 49.00-52.50, Shells down to 43.75. Few Choice sl. bullocks 66.10-68.75, few Select 65.50-66.00. Yield Grade No. 1, 1250/1250 lbs. sl. bulls 62.50-69.50. Feeder Cattle: One Lot Large Frame No. 2, 825 lbs. steers 70.50. Few Large Frame No. 2, 440/460 lbs. heifers 78.00-80.00.
 CALVES 148...Few Choice vealers 106.00-115.00. Farm Calves: No. 1, Holstein Bulls 85/130 lbs. 165.00-217.00, No. 2, 80/125 lbs. 120.00-175.00; few No. 1, Hol. Heifers 80/115 lbs. 89.00-171.00. Few Beef Cross 75/110 lbs. bulls and heifers 110.00-192.50.
 HOGS 381...Barrows and gilts: 3.50 higher. US No. 1-2 225/240 lbs. 54.00-55.00, 1-3 220/260 lbs. 52.85-54.00, few lots 1-3 220/225 lbs. 47.60-52.00. SOWS: US No. 1-3 350/630 lbs. sows 43.50-46.75. Boars 38.00-41.50.

FEEDER PIGS 154...US No. 1-3 23/25 lbs. feeder pigs 165.00-192.50, 50/65 lbs. 94.00-110.00 --- all per hundredweight.
 SHEEP 82...Spring slaughter lambs: Good & Choice 30/100 lbs. spring sl. lambs 63.00-75.00, 4 head 102.00. Slaughter sheep 7.00-19.00 - all Cwt.
 GOATS 16...Small Kids 25.00-40.00, one 65.00 --- all per head.

Grantsville Livestock
 Grantsville, Maryland
 Sat., May 4, 1991

HOGS: TOP BARROWS & GILTS 49.50-52.75, HEAVY BUTCHER 46.00-52.00, LIGHT BUTCHER 42.00-50.00, BUTCHER SOWS 40.00-46.00, FEEDER SHOATS 25.00-53.00.
 VEAL: GOOD 90.00-120.00, STANDARD 75.00-85.00, UTILITY 40.00-65.00, BULL CALVES 125.00-190.00.
 SHEEP & LAMBS: GOOD 55.00-62.00, UTILITY 48.00-50.00, SLAUGHTER EWES 12.00-16.00 EACH.
 SLAUGHTER CATTLE: GOOD 71.00-76.00, STANDARD 65.00-70.00, UTILITY 60.00-62.50.
 HEIFERS: GOOD 70.00-74.75, STANDARD 60.00-65.00, UTILITY 52.00-58.00.
 COWS: HIGH DRESSING 55.00-64.00; COMMERCIAL 50.00-54.00, UTILITY 44.00-48.00, CANNER AND CUTTER 40.00-42.00.
 BULLS: COMM. & GOOD 62.00-68.50, CUTTER AND UTILITY 55.00-60.00.
 STOCK-FEEDER CATTLE: GOOD 85.00-105.00, MEDIUM 65.00-80.00.
 STEER CALVES: GOOD 90.00-118.00, MEDIUM 70.00-85.00.
 HEIFER CALVES: GOOD 85.00-115.00, MEDIUM 65.00-75.00.

Oklahoma City Feeder Cattle

May 8, 1991
 COMPARED WITH LAST WEEK: STEERS BETWEEN 500-800 LB. STEADY; OVER 800 LB. CLOSED \$5.50-\$1.00 LOWER. HEIFERS OVER 500 LB. CLOSED STEADY TO \$1.00 LOWER. STEER AND HEIFER CALVES UNDER 500 LB. CONSIDERABLY HIGHER BUT NUMBERS ON OFFER TOO LIMITED TO FULLY SET TRENDS. FEEDER DEMAND MODERATE TO GOOD. CLOSING MARKET APPEARED TO REFLECT THE DAYS SHARP FUTURES DROP ALONG WITH A DECLINING SLAUGHTER CATTLE MARKET. QUALITY AND CONDITION OF SUPPLY WAS AVERAGE TO MOSTLY ATTRACTIVE AND IMPROVED FROM PAST SEVERAL WEEKS. SOAKING RAINS OVER MUCH OF OKLAHOMA WITH 4 INCHES MEASURED LOCALLY. SLAUGHTER COWS \$1.00 HIGHER. SLAUGHTER BULLS STEADY. RECEIPTS THIS WEEK 11,400; LAST WEEK 12,664; LAST YEAR 12,173. SUPPLY 90% YEARLING FEEDER CATTLE; 7% CALVES AND LIGHT STOCKERS UNDER 600 LB. WITH BULK FROM 500-600 LB COWS AND BULLS 3% BULK PRICE RANGES FOLLOW:
 FEEDER STEERS: MEDIUM & LARGE FRAME 1, 325-350 LB. \$140.00-\$149.00; 350-400 LB. \$133.00-\$143.50; 400-500 LB. \$114.50-\$127.50; 500-600 LB. \$103.00-\$110.00; 600-650 LB. \$95.00-\$103.00; 650-700 LB. \$92.25-\$96.00; 700-750 LB. \$88.50-\$93.00, COUPLE LOTS THIN \$93.75-\$94.50; 750-800 LB. \$86.00-\$89.50; 800-850 LB. \$83.00-\$86.00; 850-900 LB. \$81.75-\$84.00; 900-1000 LB. \$78.00-\$82.00. LARGE FRAME 2 HOLSTEINS, 320 LB. \$122.00; 450-525 LB. \$99.00-\$104.00; 525-600 LB. \$90.75-\$96.00; 675-700 LB. \$79.00-\$83.75; 700-800 LB. \$76.75-

\$80.75; 800-850 LB. \$75.25-\$77.00; 900-9250 LB. \$70.25-\$72.00.
 FEEDER HEIFERS: MEDIUM & LARGE FRAME 1, 290-325 LB. \$116.00-\$126.00; 425-450 LB. \$105.00-\$110.50; 450-500 LB. \$96.50-\$106.50; 500-550 LB. \$96.00-\$104.00; 550-600 LB. \$91.50-\$98.00; 600-650 LB. \$88.00-\$94.50; 650-700 LB. \$83.50-\$89.25; 700-800 LB. \$80.50-\$85.00; 800-875 LB. \$78.75-\$82.00.
 SLAUGHTER COWS: CUTTER, BONING AND BREAKING UTILITY Y.G. 1-4 AVERAGE DRESSING \$52.50-\$55.50; HIGH DRESSING \$55.00-\$57.50; VERY HIGH DRESSING \$57.50-\$60.50; LOW DRESSING \$48.75-\$52.50. CANNER AND LOW CUTTER \$44.50-\$48.50.
 SLAUGHTER BULLS: Y.G. 1 1325-2100 LB. AVERAGE DRESSING \$64.00-\$67.00; HIGH DRESSING \$67.00-\$70.00.

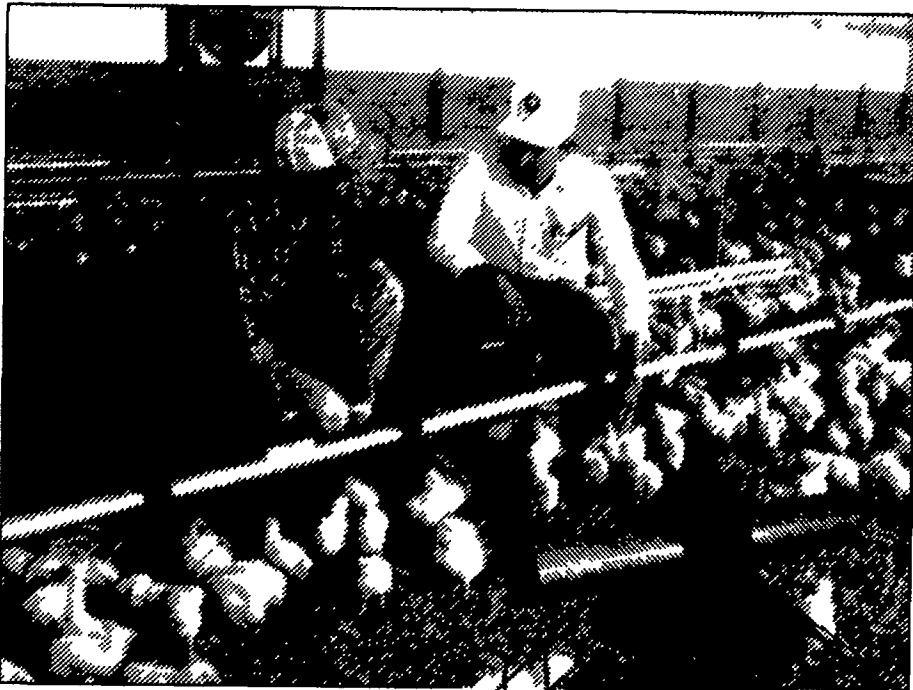
North Jersey Livestock

Hackettstown, NJ
 Tuesday, May 7, 1991
 Report supplied by auction
 CALVES 50-215.
 COWS 35%-61%.
 EASY COWS 22-51%.
 HEIFERS 49% - 70
 BULLS 50-72.
 STEERS 61% - 71.
 HOGS 35-56.
 SOWS 38.
 ROASTING PIGS 43.00-51.00.
 BOARS 19-24.
 SHEEP 10-80.
 LAMBS EACH 14.00-75.00.
 LAMBS PER LB 32-91.
 GOATS EACH 33.00-89.00.
 KIDS EACH 2.00-61.00.
 TOTAL 1191.

Shippensburg Produce Auction

(717)530-1700 or 532-5511
 Shippensburg, PA
 Average Prices Of #1 Produce
 May 4 and 7. Open 11 a.m. Tues. & Sat.
 Report Supplied by Auction
 APPLES: 2.00-3.00 1/4 BU.
 ASPARAGUS: .75-1.30 LB.
 BEDDINGS PLANTS: 4.00-7.25 FLAT.
 HANGING BASKETS AND PLANTERS: 3.50-7.25 EACH.
 POTATOES: 50 LBS. 4.00-5.00.

FROM DAY ONE



THE ORANGE ONE

WILL GIVE YOU BETTER
 POULTRYHOUSE
 PERFORMANCE.

Big Dutchman.

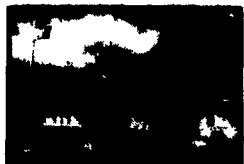


"Built By Poultry People For The Poultry Industry"

HASHEY EQUIPMENT COMPANY, INC.

SYCAMORE IND PARK
 255 PLANE TREE DRIVE
 LANCASTER, PA 17603
 (717) 393-5807

Route 30 West
 at the
 Centerville Exit.



Designers of Quality Systems for Poultry, Swine and Grain Handling

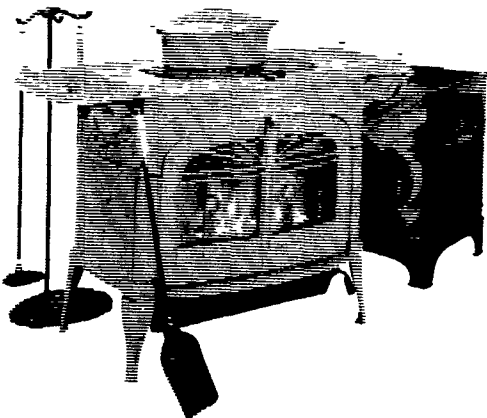


QUALITY SEED IN THE BAG! OUTSTANDING IN THE FIELD!
CORN - ALFALFA - SOYBEANS

CHEMGRO

Box 218
 East Petersburg, PA 17520
 717-569-3296 1-800-346-GROW

VERMONT CASTINGS
 All Models In Stock



- Wood & Coal Stoves
- Fireplace Accessories
- Ducane Gas Grills



Bowman's Stove Shop

(717) 733-4973
 906 E. Main Street
 Ephrata • Rt. 322
 (1 M. E. of Rt. 222)

M,T,W 10-6; Th. & Fr. 10-8 Sat. 10-4

We Buy Poultry Weekly For Cash!

- Leghorn Fowl
- Spent Fowl
- White Pigeons
- Bantams
- Bantam Roosters
- Broilers
- Rabbits
- Guinea Hens
- Muscovy Ducks

Watkin's Live Poultry
 718-272-6712
 bet. 7 AM & 6 PM
 718-843-9302
 After 7 PM

Advertisement

You're Never Too Old To Hear Better.

Chicago, Ill. — A free offer of special interest to those who hear but do not understand words has been announced by Beltone. A non-operating model of the smallest hearing aid Beltone has ever developed will be given absolutely free to anyone requesting it.
 It's yours for the asking, so send for it now. It is not a real hearing aid, but it will show you how tiny hearing help can be. The actual aid weighs less than an eighth of an ounce, and it fits completely into the ear canal.

These models are free, so we suggest you write for yours now. Again, there is no cost, and certainly no obligation. Although a hearing aid may not help everyone, more and more people with hearing losses are being helped. For your free sample send your name, address, and phone number today to: Department 20196, Beltone Electronics Corporation, 4201 West Victoria Street, Chicago, Illinois 60646.