

90 Ford F150 XLT Lariat, 4x4, 302 automatic, air, 23,000 miles, \$11,500.00. Walker's, Somerset Co., 814-893-5589.

1979 Ford F850, 2650 gallon Techweld New 391 Gas Excellent condition Used for spare truck \$11,900

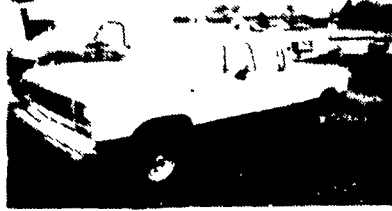
1973 Diamond Rio tractor. 318 Detroit 10 speed RR Hendrickson rears Runs good \$2,700

1978 GMC. 3200 gallon aluminum tank Bottom load 318 Detroit Good condition Used for spare truck \$13,900 (717) 696-3838



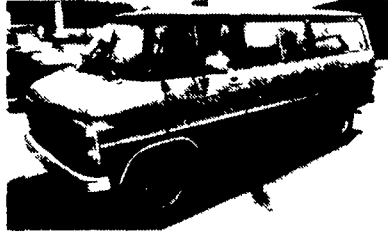
**1985 Dodge Caravan**  
2.6 Engine, AT, PS, PB, AC,  
7 Passenger  
**\$4,650**  
(717) 865-3488

**1983 DODGE D350 CREW CAB**



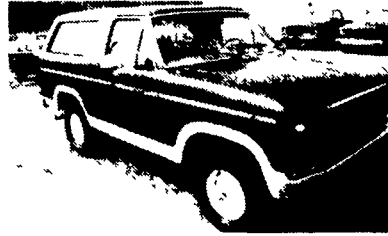
1 Ton, 318 V8, AT, PS,  
New Paint, 50,000 Miles **\$4,800**

**1984 BEAUVILLE VAN**



305 V8, Auto, PS,  
PB, 24,000 Miles **\$6,400**

**1983 FORD BRONCO 4x4**



6 Cyl., 4 Speed,  
1 Owner **\$3,200**

"THE TRUCK PEOPLE"  
**BOYER MOTOR CO.**

1065 S. State Street  
Ephrata, PA 17522  
717-738-1885 1-800-786-1835

4-750x20 snow tires  
**\$25 each**  
2-750x20 regular tread  
**\$25 each**  
6-700x18 regular tread  
**\$25 each**  
(215) 267-3652  
after 5 p.m.

**SHIRK STOCK TRAILERS**

BUMPER HITCH &  
GOOSENECK HITCH

UNITS IN STOCK:  
6'x16' SHIRK, BUMPER  
6'x16' SHIRK GOOSENECK  
7'x20' MORITZ ALUMINUM  
GOOSENECK  
OTHER SIZES AVAIL

**MARTIN HARDWARE & EQUIP. CO. INC.**

Rt. 501, 1 1/2 Miles South of  
Schaefferstown, PA  
PHONE: (717) 949-6617 or  
949-2549  
Mon. & Wed. 8 to 5;  
Tues., Thurs., Fri. 8 to 8;  
Sat. 8 to 4

**Royal Automotive**  
TRUCK SALES & LEASING

Coopersburg, Pa. Rt. 309 Just Off I-78, Between  
Allentown & Quakertown

215-282-4090



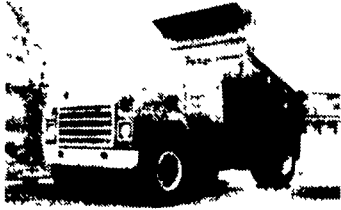
1985 GMC Thermo King Reefer Cargo Van,  
w/Side Door, 350 V8, AT, PS, PB, 77,000  
Miles Med Temp. Brand New Engine, 3 Yr  
50,000 Mile New Engine Warrantee Avail-  
able For Sale Or Lease



80 Int. Hi Rise Platform Truck w/Utility Boxes,  
V8, AT, or Stick, Just Came Off Of NJ Fleet  
Maintenance Priced To Sell!



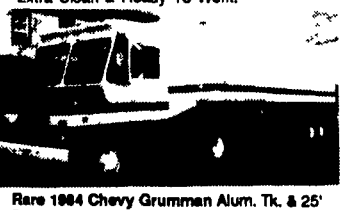
Stake Body Dumps In Good Working Condi-  
tion, Priced Under \$5,000 - While They Last.



1979 Red. Int. S1924 Dump 415 V8, 5/2 Sp.,  
AB, 26,500 GVW, Only 63,000 Miles, Several  
Different Size Dumps To Choose From, All  
Extra Clean & Ready To Work.



Just Arrived - Several 14' O & Med Temp  
Reefers With Standbys, Fleet Maintained.  
Call For Details, Priced To Sell



Rare 1984 Chevy Grumman Alum. Tk. & 25'  
Det Gooseneck Trailer, 350 V8, AT, Pa,  
35,000 Org. Miles, Full Swing Doors & Side  
Door & Lots More, Call For Details, Avail. For  
Sale Or Lease.

**TWO ACRES OF ALL TYPES USED TRUCKS.**  
"IF WE DON'T HAVE IT, WE'LL GET IT"



**1989 FORD F450 SUPER DUTY**  
Cab & Chassis, 460, 5-Speed, PS, PB, AM-FM Dual Tanks,  
14,500 GVW, Short Wheel Base, 24,000 Miles, Like New.  
**\$11,500**



**1989 GMC SIERRA SL 3500**  
Short Wheel Base, Cab & Chassis, 350 F.I. Auto, PS, PB,  
AM-FM St. 10,000 GVW, 14,000 Miles. Like New.  
**\$9,800**

**A & J AUTO SALES**

798 East Main Street - Rt. 322 East  
Ephrata, PA 17522  
Specializing In Late Model, Low Mileage Trucks  
717-733-2873

**USED TRUCKS**



1981 International COF-9670, Cum-  
mins 400 BC, II, 75,000 MI. on New  
Overhaul; RTO 14613 Transmission;  
Sliding 5th Wheel; Muncie Wetline  
Price **\$12,500**

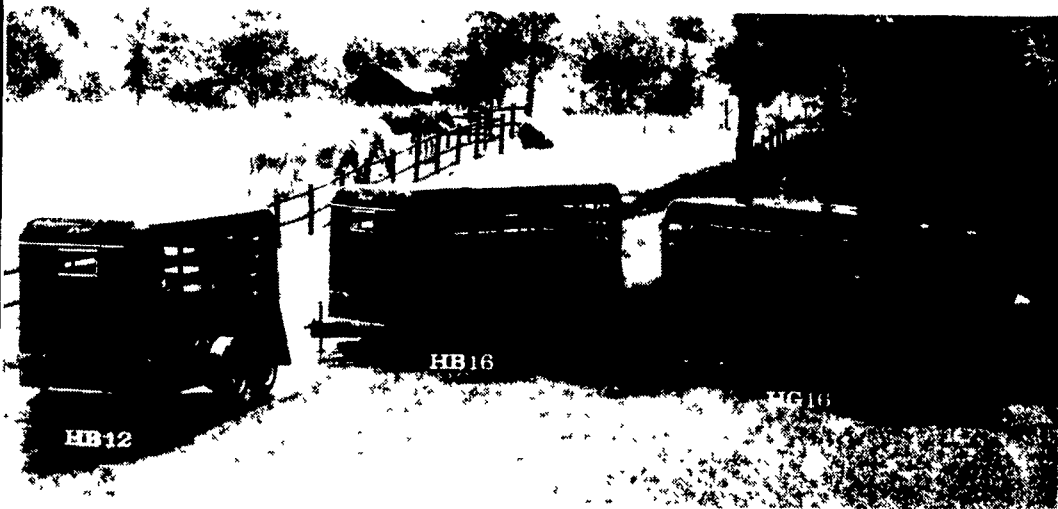


1980 Peterbilt, CAT 3406-400 HP, Air-  
ride, sliding 5th wheel, RT12509  
Transmission, Chelsea Wetline  
Price **\$9,500**

Serving Agriculture **50 YEARS**  
(717) 768-8231

**HOOBER**  
C.B. HOOBER & SON INC.  
INTERCOURSE, PA

★★★★ **TRAILER ENTERPRISES** ★★★★★  
**IS BUILDING A REPUTATION**

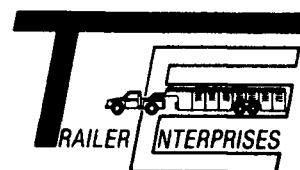


From Livestock Transport - to - Heavy Industrial Moving.. We  
serve **YOU!!** Call **NOW** and give us the opportunity to help, with  
**ALL** Your Trailer Needs! Financing and Leasing To Qualified  
Buyers. Trailer Enterprises is also your area distributor for Owens  
heavy-duty car dolly.

**HORSE \* STOCK \* GOOSENECK \* FLATBEDS \*  
INDUSTRIAL \* UTILITIES OF ALL KINDS \***

"Revvin' to take care of ALL your trailer needs"

120 Pine Drive  
Greencastle, PA 17225  
Phone 717-597-5611



James D. Martin  
Owner