

Vet Nutritional Forum Set

ELIZABETHTOWN (Lancaster Co.) — The next meeting of the Veterinary Nutrition Forum will be Wednesday at the Days Inn in Lancaster.

Dinner reservations are needed by Monday, however they are not necessary for those who wish to attend the program and forgo the dinner.

Guest speakers are to be Glenn Shirk, county extension agent, and Bruce Kreider, former multi-

county farm management agent for the area. Kreider started a dairy operation about a year ago. The two are to discuss "Rethinking Dairy Economics And Management Strategies For The 90s."

The Days Inn is located on Keller Avenue, at Rt. 501. An informal social hour in the lounge starts at 6 p.m. followed by a dinner at 7 p.m.

Those planning to attend dinner should call Steven Wolfgang at (717) 367-8402.

Rootworm Damage Possible In Del. Corn

(Continued from Page A28)

percent of the plants are cut or 10 percent of the plants show active leaf feeding. At the 3- to 4-leaf stage, treat if 5 percent or more of the plants are cut and live larvae are found.

Rootworms may be a problem since beetle populations were high in 1990. If you did not scout your fields for beetles in 1990 and you are planting continuous corn in the northern parts of the state, a soil insecticide treatment is probably justified. Some fields will not need a treatment, so plan to scout fields for adult beetles from mid-July to mid-August in 1991 to

make the best decision in 1992.

In conventionally tilled, continuous-corn fields, you can scout for rootworm larvae before lay-by in 1991, and a soil insecticide can be applied at cultivation. The threshold is two or more larvae per plant (found by hand-sifting soil and visual inspection of root and soil).

The decision to use a soil insecticide should be based on the knowledge of how the many factors affect pest populations, pest history, and monitoring.

For more information on integrated pest management, contact your county Extension agent.

Capon Conference

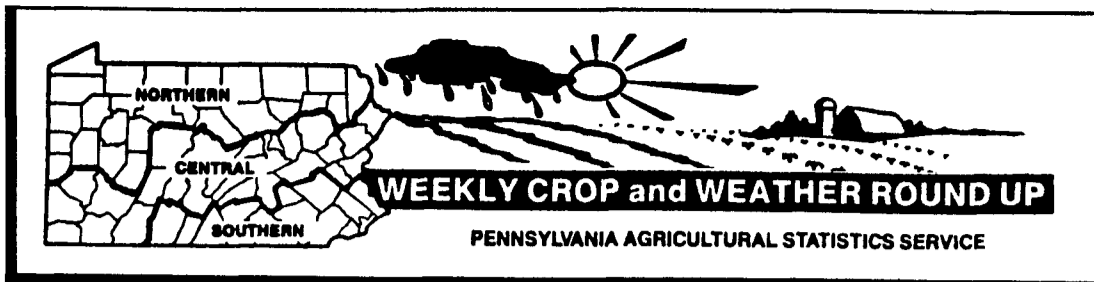
UNIVERSITY PARK (Centre Co.) — The 1991 Pennsylvania Capon Conference is scheduled at the Fire Hall in Kreamer on Tuesday, July 16.

Contact David S. Bailey, Northumberland County Penn State Extension, Mountain View Lodge, Trevorton Rd., RD 1 Box 945, Shamokin, PA 17872 for a program.

Proceedings from the 1990 Pennsylvania Capon Conference are available.

The proceedings cover topics such as abstracts from "Poultry Science"; surgical instruction; field posting to solve a management problem; shrinking bags for RTC carcasses; processing equipment for capons; caponizing tools, needs for a commercial enterprise; organizing a 4-H capon program; fast starting chicks; preventing health disorders prior to caponizing; a computer scientist's analysis of live body weights from three commercial strain crosses; and a panel of 4-H capon members discussing production, processing, caponizing and the 4-H program in capons.

The proceedings can be purchased for a limited time for \$4 each by writing to Linda Houtz, Penn State Poultry Extension, 213 Henning Bldg., University Park, PA 16802. Checks should be made payable to Penn State University.



FOR THE WEEK ENDING APRIL 28, 1991

FAIR WEEK FOR FIELDWORK: Pennsylvania had a wet week with temperatures slightly above normal. Cool, wet weather dominated the beginning of the week, while warm, dry weather dominated by the weekend. Our respondents indicated that 3 days were suitable for field work. Activities for the week included: repairing fence; hauling manure; spreading fertilizer and lime; spraying fruit trees; maintaining machinery; spring plowing; planting crops; and caring for livestock.

SOIL MOISTURE: One percent of our respondents rated the State's topsoil moisture as short, 52 percent rated it adequate, and 47 percent rated it surplus. Fifty-one percent of the respondents in the Northern region rated soil moisture as adequate, and 49 percent rated it surplus. In the Central region, 52 percent rated soil moisture as adequate, and 48 percent rated it surplus. Three percent of our respondents in the Southern region rated soil moisture as short, 53 percent rated it adequate, and 44 percent rated it surplus.

PLOWING: Spring plowing in Pennsylvania was 57 percent completed by week's end, that's 3 percentage points behind last year's 60 percent. The five-year average for this date was 61 percent. Completion of spring plowing was 36, 63, and 72 percent in the Northern, Central, and Southern regions, respectively.

CORN: The State's corn crop was 3 percent planted by the end of the week. At this time last year, 4 percent was planted, and the five-year average was 9 percent. Planting completion by region were: Northern region-none; Central region-2 percent; and Southern region-6 percent.

TOBACCO: Eight-three percent of Pennsylvania's tobacco beds were planted by the end of the week. Last year, 89 percent of the tobacco beds were planted. The five-year average was 84 percent.

OATS: Oat planting in Pennsylvania was 64 percent complete by week's end. Last year, that figure was 63 percent. The five-year average was 68 percent. Planting completion in the three regions were: Northern region-39 percent, Central region-66 percent, and Southern region-85 percent. The oat crop was rated 17 percent excellent, 54 percent good, 26 percent fair, and 3 percent poor.

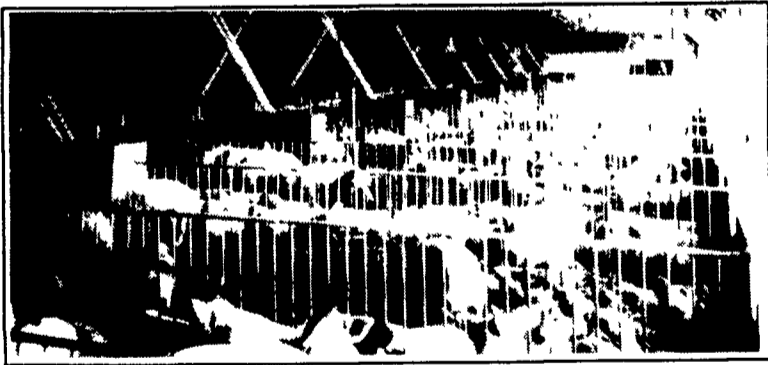
POTATOES: By the end of the week 30 percent of the State's potatoes were planted, the same percentage as last year at this time. The five-year average was 37 percent.

BARLEY AND WHEAT: The State's barley crop progress by the end of the week was 84 percent pre-boot, 15 percent boot and 1 percent heading. Last year's numbers were 91, 8 and 1 percent, respectively for pre-boot, boot and heading. The five-year average was 93 pre-boot and 7 percent boot. Wheat progress was 93 percent pre-boot and 7 percent boot, according to our respondents. Last year's wheat numbers were 95 and 5 percent. The five-year average was 96 and 4 percent. The wheat crop was rated 22 percent excellent, 54 percent good, 21 percent fair, and 3 percent poor.

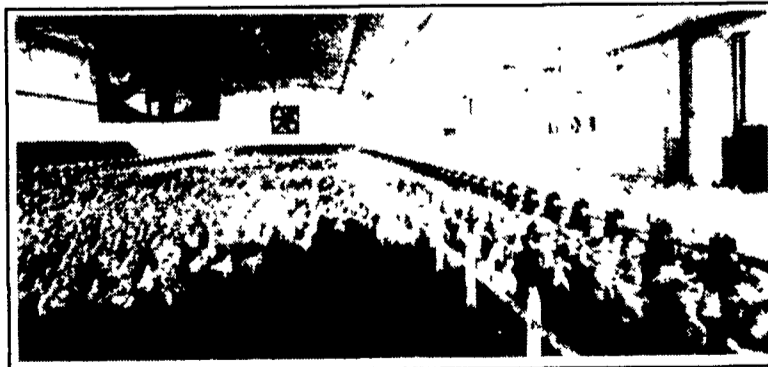


HOG FINISHING BARN & POULTRY/TURKEY UNITS

Excellent Contracts - Financing Available
CALL FOR DETAILS 717-866-7565



Hog Unit



Poultry Unit

Full Line Of Parts
In Stock For Your
Poultry & Hog
Needs

We Ship
UPS

Swine & Poultry Systems Specialists

FARMER BOY AG. INC.

410E LINCOLN AVE MYERSTOWN PA 17067

24 Hour Service

Hours: M-F 7:00-5:00; Sat. 7:30-11:30

717-866-7565

AG STRESS

Vitamins will not fight fatigue! Fatigue and pain are the body's early warning indicators of something worse to come. There is help with a natural mineral and herbal balance. Experience the difference.

For more information/free literature contact:

ROBERT W. CAMPBELL (717) 355-9262
6148 Mast Rd., Narvon, PA 17555

WANTED

NON-TOXIC WHITE SOYBEANS AT \$12 PER BU. FOR NUMEROUS SOYFOOD FACTORIES ALONG THE EAST COAST. WE NEED MORE GROWERS.

Consumers are fed up with toxic food including drugged meat. You would do well both from the proceeds of your crop and the change of your soil by turning to organic food, where the future is in farming.

You can also get a premium for non toxic yellow corn and beans and Speltz from livestock farmers who wised up and know they are better for livestock. If you feed livestock, grow your crop with our detoxifying fertilizer. If you need to buy feed, ask us where to buy non toxic feed.

A customer has 47.75 percent protein yellow beans, cleaned for seed at \$16 per bu. of 60 lbs. Ask us about him. They should transmit their high protein to save you money. Some of our dairy customers are cutting back to almost no bought minerals because their crops contain the minerals. And their cows are doing better than others because the Creator can balance a ration better in the field than a man made computer can balance a ration out of toxic feed. Amen. Are you a Thomas or a believer? Ask for literature.

ORGANIC CENTER

217 S. RAILROAD AVE.
NEW HOLLAND, PA. 17557

Phone 717-354-7064 7 AM to about 8 or 9 AM
to talk with owner, Eli Stoltzfus