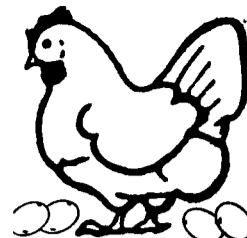


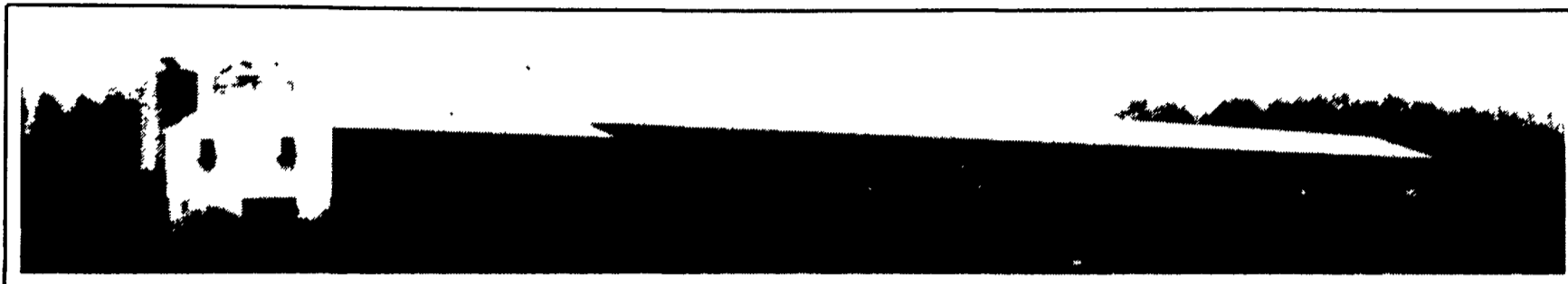
# Thanks & Congratulations to



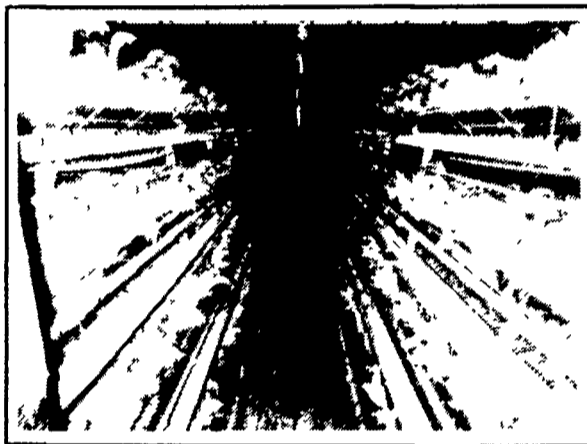
## TOM & MISSY PRICE

Nottingham, PA

On Their Newly Remodeled **CHORE-TIME** Cage Layer System With **CHORE-TIME** Dura-Trim (4 Tier-5 Row-450' Long-81,000 Bird Capacity)

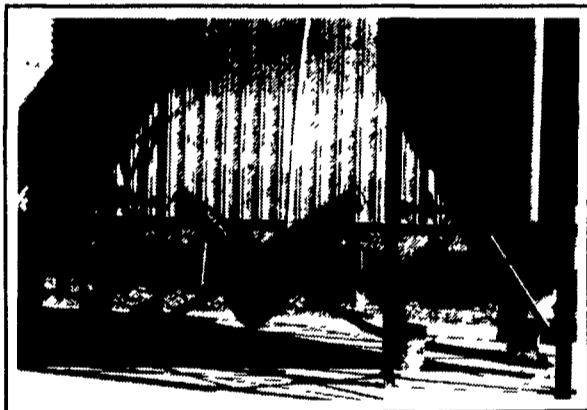


44'x474' High-Rise House, Originally Had 5 Row 3 Tier Cage System With Obsolete Flat Chain Feeding. After Remodeling The Capacity Was Increased From 60,000 To 81,000 Layers



New **CHORE-TIME** 5 Row Specially Engineered Dura-Trim Cage System With **CHORE-TIME** ULTRAFLO® Feeding System Converts 3 Tier Flat Chain Systems To 4 Tier ULTRAFLO® Systems Within Existing Building Structure.

For Increased Structure Value And Manure Handling, All New Posts, Girders, Walkways, Concrete Curbs, Under Posts & Steel Beam Supports At Pit Doors Were Installed.



Existing Bins Were Utilized And New **CHORE-TIME** Feed Screeners And A New **CHORE-TIME** Fill System Were Added

M.A.S. Continuous Baffle-Board Inletting System With Manual **CHORE-TIME** Sliding Door Inlets For Additional Air On Extremely Hot Days.



★ BIRDS, EGGS & FEED CONTRACTED BY: DAVE BAKER OF BAKER FARMS, MIDDLETOWN, DE

NOTE: To All Existing Layer Operations That Are Either Too Small, Obsolete Or In Bad Repair- WHY NOT INCREASE YOUR CAPACITY BY 33% AND HAVE THE MOST EFFICIENT "STATE-OF-THE-ART" **CHORE-TIME** CAGE SYSTEM INSTALLED TODAY. You Can Have A Complete New Remodeled **CHORE-TIME** Cage System For The Approximate Cost of \$3.50 Per Bird.



It's Another ULTRAFLO®  
By **CHORE-TIME**

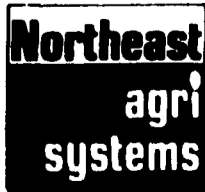
★ Call Or Write To Learn Why More **CHORE-TIME** Cage Systems With **ULTRAFLO** Feeding Systems Are Being Installed More Often Than All Other Systems Combined.

For Free Estimates And More Information Contact:

LARRY HORST - Office (717) 569-2702, Home (717) 656-7799

Equipment By

Buildings By



**NORTHEAST AGRI SYSTEMS, INC.**

FLYWAY BUSINESS PARK  
139 A West Airport Rd. Lititz, PA 17543  
(717) 569-2702  
1-800-673-2580

**KING CONSTRUCTION CO.**

601 Overly Grove Road  
New Holland, PA 17557  
(717) 354-4740