



Good silo give away for taking down. 4230 For Sale. Call 301-357-8246

Grain systems grain bin, 27x42, 24,000 bu. w/ aeration fan; Air Hand pneumatic silo blower, w/8" auger, 1500 bu. at 90'/per hr. 717-532-2044.

For Sale: Bunker silos, manure storage pits, retaining walls, floor panels, basement walls. Also offering flat work: foundations, garage, basement, warehouse floors. Conestoga Concrete 717-859-5437

### May Special On Goliath Sprockets

Hub - \$325      7 Tooth Idler - \$130  
Bottom - \$215      8 Tooth Idler - \$160  
Drive - \$191

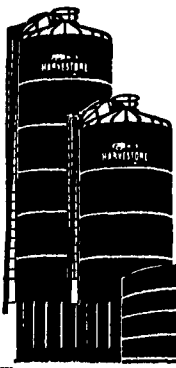
Delivery Included

#### INVENTORY REDUCTION SALE ON USED HARVESTORES IN STOCK

- 1 - 20x90 - 1983 Mod 14B w/Goliath II
- 2 - 20x60's w/Goliath 74's
- 2 - 20x80's w/Goliath 74's
- 1 - 25x90- w/Goliath II
- 1 - 62x23 Slurrystore

### Better Bilt Storage, Inc.

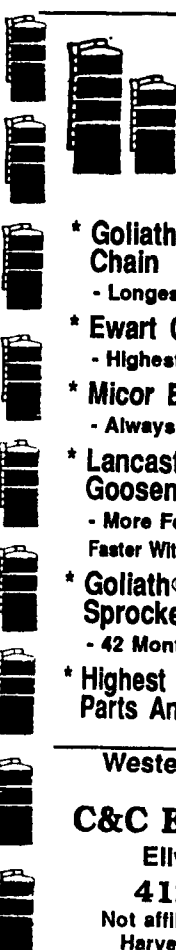
Rt. 2  
Sugar creek, Ohio 44681  
216-852-4088



In Business 16 Years

### BADGER'S AGRI SERVICE, INC.

Dillsburg, PA  
717-432-8377



- \* Goliath® Standard Cutter Chain  
- Longest Warranty Available -
- \* Ewart Cutter Chain  
- Highest Tensile Strength Available-
- \* Micor Epoxy Floors  
- Always Had A Warranty -
- \* Lancaster Level-Flo Goosenecks  
- More Feed In Your Silo And Faster Without Plugging Problems -
- \* Goliath® And Hercules® Sprockets  
- 42 Month Pro-rated Warranty-
- \* Highest Quality Replacement Parts And Service

Western PA Customers contact:  
**C&C Equipment Co.**  
Ellwood City, PA  
412-752-6671  
Not affiliated with A.O. Smith Harvestore Products, Inc.

### 3 SILOS AND UNLOADERS

14x50 stave silo, 4 yrs. old w/Startrac unloader. 717-786-3089

14x55 Ribstone silo w/ Badger unloader, \$2,500/OBO. 717-354-4051. Ask for Bill.

16' Jamesway ringdrive winch and hexopod included \$1,500. OBO, evenings 215-562-3710, days 215-987-3666.

20x62 Madison stave silo with aluminum roof, Patz unl. \$4,000 OBO. 717/299-6180 eves.

(2) Harvestore Silos 14x50 and 20x50, priced very reasonable. 717/786-2839.

Agri-Pac Versa Silo Bagger and Ag-Bagger Jr. Silo Bagger, both 8' and PTO. 814/263-4997.

Attention Harvestore Owners Silo Conversion Co. can rid you of the headaches and expense of your bottom unloader. We'll convert your Harvestore into a useable and profitable top unloading structure. For prices and details call Silo Conversion Co. 812/944-7102.

Harvestor unloader, large housing and trans, 7 1/2 single phase, like new, \$2,000. (301)694-8624.

Patz Model 98 Silo Unloader out of 12' silo. Basic unit. \$450 OBO. 215/445-6156.

Patz silo unloader for parts, some like new, \$200. David F. Glick, 1475 Lancaster Pike, Quarryville, PA 17566

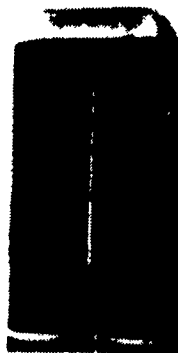
#### Harvestore® Owners

- 1 Today's economy demands a change
- 2 After 10 years we feel it's time to start over so we've reduced our prices to Pre-1991 levels
- 3 As always we offer quality parts at wholesale prices

Structures & Slurms available  
**Silo Supply Co.**  
1-800-622-7588

Notice Not an A.O. Smith Harvestore® dealer and never will be

### UNADILLA WOOD SILOS Sales & Service Leasing Available



Silo Roofing  
Wooden Silo Liners  
Distributors and Pipes  
Wood Feed Carts  
Hay Racks  
Silo Homes  
Used Silos When Available

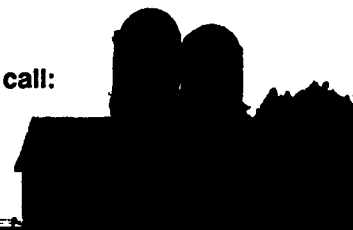
12" Goosenecks Installed On Sealed Silos

**DANIEL S. STOLTZFUS**  
R.D. 2, Narvon, PA 17555  
717-354-4374

### DETWEILER SILOS

New Concrete Stave Silos  
New and Used Extensions  
All Types Silo Repair  
Teardown and Rebuild  
Silo Relining

Write or call:



808 Oakville Road, Newville, PA 17241  
(717) 776-6321 • (717) 532-3039

### "MAKING GOOD SILAGE"

Probably no other ingredient fed in cattle rations today varies so much in "quality" as silage. It takes common sense, attention to details, and solid management to make good silage.

At least nine factors affect silage quality. Rather than acting independently, they interact to determine silage quality:

#### "The 9 Factors"

- |                                 |                    |
|---------------------------------|--------------------|
| 1. The Crop                     | 6. Silo Structures |
| 2. Stage of Growth              | 7. Feedout         |
| 3. Moisture                     | 8. Weather         |
| 4. Fine Chopping                | 9. Additives       |
| 5. Filling, Packing and Sealing |                    |

Since 1908, SOLLENBERGER SILOS CORP. has been providing the Silo Structures now in demand by more and more farmers concerned about "silage quality." "Nothing keeps feed better than our poured concrete silos."

Member International Silo Assn.



## Sollenberger Silos Corp.

A Nitterhouse Company  
Box N Chambersburg, PA 17201 (717) 264-9588

SINCE BEFORE 1910

Office Number - 717-264-9588

For Upright Silos Call Bob Francis 717-532-6848 Evenings  
For Bunker Silos & Manure Systems Call Tabb Justus 717-762-8663

Sollenberger Silos Corp.  
Box N, Chambersburg, PA 17201

Name \_\_\_\_\_  
Address \_\_\_\_\_  
City/State \_\_\_\_\_  
Zip \_\_\_\_\_ Phone \_\_\_\_\_  
Best Time To Call \_\_\_\_\_  
County \_\_\_\_\_

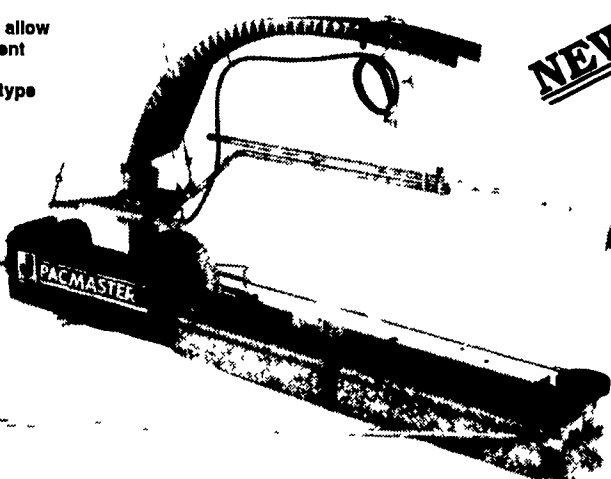
- Please send information on:
- 1. Bottom Unloading Concrete Silos
  - 2. Top Unloading Concrete Silos
  - 3. Upright Bunker Silos
  - 4. Manure Pits
  - 5. Feed Bunks
  - 6. Cattleguards
  - 7. Industrial Silos/Tanks

- Large Tri-Suspension frame provides proper balance for even silage cutting.
- 2"x2"x1/4" angled steel frame has greater strength
- Forged 1/2" steel eye-bolts allow for individual cable adjustment and proper balance.
- Three, strong, 1/2" aircraft-type cables provide high-tensile strength and dependability.

- Auger knives are sharpened, hardened and curved. Result: augers and chipper wheels maintain proper wall pressure for better cleaning and more aggressive cutting and digging of hard-packed or frozen silage.

## PACMASTER

Surface Drive Silo Unloader



- IMPELLER/BLOWER**
- New 3/16" stainless steel paddles: swinging assembly & reversible
  - A big 28", 1042 RPM impeller with adjustable blades
  - Adjustable shear plate
  - Wide blower discharge
  - "Turbo" air inlet



- COLLECTOR RING**
- Quality built collector ring
  - Self-cleaning opening
  - Grease zerks
  - Extra long power cord
  - Flip-lock power cord



- AUGER**
- 2 1/2" diameter
  - Counter-rotating 7" and 8" twin augers
  - Exclusive roughage auger

**YOU WON'T BEAT OUR PRICES & SERVICE**



## LAPP'S BARN EQUIPMENT

5935 OLD PHILADELPHIA PIKE, GAP, PA 17527  
PHONE: 717-442-8134

WE SERVICE WHAT WE SELL — Radio Dispatched Trucks —

