

2449 SOUTH QUEEN ST. (rear),  
YORK, PA 17402  
Interstate 83 • Exit 6E

# Douglas EQUIPMENT & SUPPLY CO.

FAX 717/741-1518  
717/741-2626  
or 717/741-1797

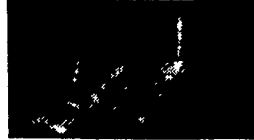


Tannant 250 High Dump Sweeper, 2 Cyl. Water Cooled, Hydrastatic, Good Cond. \$4,500

Many Tennants In Stock, Call For Prices



Pettibone Super 6 IH 6 Cyl. Gas, 33' Lift, 6000 Lb. Cap, 4 WD, 4WS, Exc. Cond. \$10,500



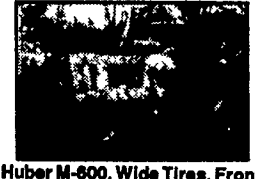
1986 John Deere 310C Full Cab & Heater, Exc. Cond. \$17,900



(1) IH 260A T.L.B. Cab, Diesel, 2 Lever \$8,900

(1) Case 580B T.L.B. Diesel, Cab Power Shuttle \$7,900

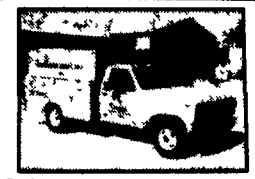
(1) Case 580SE, Extend-a-Hoe, 2 Lever, ROPS, Good Cond. \$17,900



Huber M-600, Wide Tires, Front Blade, Full Hyd. Center Blade, Ford Gas, Exc. Cond.



Champlon D715 Grader, Full Cab & Heater, Rear Ripper, Good Cond. \$13,500



Selling Our Own Service Truck, 1981 Ford F-350, 25,000 Orig. Miles, Ziebart Cab & Service Body, 400 Gas, 4 Spd. Immaculate Garage Kept. Complete w/Weilder & Air Compressor. \$8,500



Massey Ferguson MF40B's, Diesel, 3 Pt, PTO, Sickle Bars

### FORKLIFTS

- Lull 31 R. Lift, New Tires, CAP.....\$6,500
- Pettibone Super 6, 33' lift, 4WD, in shop

### RUBBER TIRE LOADERS & SKID STEERS

- Ford 335, 3 pt., PTO, diesel, front loader, 1 owner \$10,500
- Clark 35C, full cab & heater, GM diesel, good rubber, good cond..... \$15,500
- Clark 45C, GM diesel, cab..... \$18,500
- Case W20B, cab & heater, good cond..... \$18,500

### SWEEPERS

- Tennant Model 92, 4 cyl. water cooled, hydrastatic, good cond.....\$6,500
- Tennant 240 w/front power broom, 2 cyl. Kohler...\$2,500
- Tennant 240, 2 cylinder Kohler...\$3,500
- Tennant 250, hi dump, cab, water cooled.....\$4,500
- Wayne 973, V8 gas, dual gutter brooms.....\$3,850

### ROLLERS

- Gallon 10-14T tandem, 6 cyl. IH gas, hydrastatic...\$5,850
- Ferguson 9 wheel rubber tire roller Oliver gas..... Call For Price

### DOZERS

- Terex 82-40 GM diesel, P/S, canopy, ripper..... \$16,500

### GRADERS

- Huber F-1700 6V-53 Detroit, full cab & heater, power shift.....\$11,500/OBO
- Huber M-52 Maintainer, 4 cyl. cont., sideshift center blade.....\$3,995

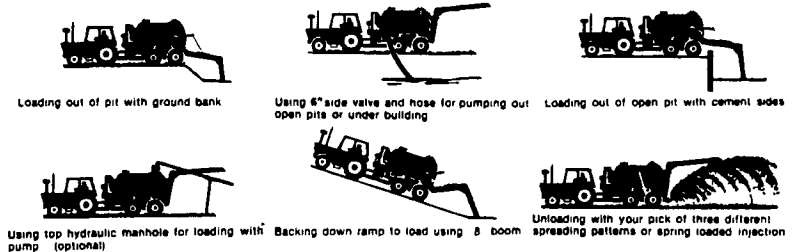
### MISC.

- I.R. 185 compressor, JD diesel, 1,600 hrs.....\$6,250
- Rogers 15 ton fixed neck low bed.....\$1,500
- New Custom trailers in stock, 3 ton thru 20 ton..... Call For Prices
- (2) R22 UC End dumps, Cummins Diesel, R/O.....\$9,800 \$12,500
- New & Used Buckets
- Cushman scooters, gas, 3 spd..... Call For Prices
- Gradall G660, diesel up & down w/remote..... \$12,250
- Barber Greene TA30 Wheel Trencher, IH diesel, 12" bucket, 16" side cutters, exc. cond., good U/C \$6,500

# THE 2900 SLURRY BUGGY



HAUL LIQUID MANURE ALL DAY WITHOUT GETTING OFF THE TRACTOR SEAT USING THE SLURRY BUGGY EASY LOADER. THE SLURRY BUGGY IS DESIGNED FOR YOUR MANY LIQUID MANURE HANDLING JOBS.



We Have Spreaders To Rent - 1500 & 2900 Gallon FOR FREE LITERATURE CALL OR WRITE

## SLURRY BUGGY EQUIPMENT COMPANY

194 S. Grottdale Rd. Locka, PA  
PHONE 717 656 3249

### 1a CONSTRUCTION EQUIPMENT

# WENGLERS INC.

251 SOUTH RACE STREET, MYERSTOWN, PA. 17067

PH: 717-866-2130

FAX 717-866-4300

NIGHTS:  
PHONE:  
717-866-7147  
or  
717-273-9089

HOURS:  
MON-FRI 7:30 To 5:00  
SAT 7:30 To NOON

### (14) DOZERS

- MF 200-6 Way.....\$3900
- (2) IH 500 Diesel 6-Way.... \$3000-\$6000
- (2) JD 440\$4950 to \$5900
- Case 350-6 Way....\$8500
- Cat D4D.....\$9500
- Case 450-6 Way.\$11,500
- Case 450B-6 Way\$17,500
- Case 850C-6 Way\$22,500
- JD 450D-6 Way..\$22,500
- JD 450E-6 Way..\$24,500
- Cat D5B.....\$29,500
- IH TD 25C w/Ripper.....\$49,500

### (10) TRUCKS & CARS

- 1955 Chevy Pickup.....\$2500
- 1985 Honda Accord.....\$3990
- 1984 Honda Accord LX.....\$4500
- 1985 Jeep Cherokee 4x4.....\$5500
- 1986 Honda Accord LX.....\$5600
- 1986 Jeep Cherokee 4x4.....\$6500
- 1980 Ford F600 27' Bucket Truck.....\$7500
- 1985 Ford E350 Mini Bus.....\$9900
- 1970 GMC Astro w/24' Rollback.....\$11,900
- 1987 Buick Gran National.....\$16,900

### (5) TRACTORS WITH LOADERS

- Ferguson 20.....\$2500
- Case 430CK.....\$4900
- Ford 545.....\$5900
- Ford 335.....\$8500
- IH 260A.....\$8500

### (14) CRAWLER LOADERS

- JD 350.....\$4900
- JD 350.....\$6500
- JD 450.....\$7900
- IH 175B.....\$8900
- JD 450.....\$9900
- Cat 931-Cab.....\$11,900
- IH 125C.....\$12,900
- Case 450B.....\$16,500
- JD 555.....\$16,500
- Case 850B.....\$18,500
- Cat 955L.....\$18,500
- Cat 941B.....\$19,500
- Cat 977L-Ripper.....\$29,500
- Cat 983 w/Cab.....\$35,000

### (8) FORKLIFTS

- Clark 4000 Lb.....\$1000
- Caterpillar 5000 Lb.....\$3900
- Clark 8000 Lb.....\$5900
- White 40 LP.....\$5900
- Clark 8000 lb. Gas.....\$11,500
- Chicken Hawk.....\$13,500
- Komatsu FG40 1980 8000 Lb. & Triple Mast.....\$13,500
- Case 586C.....\$18,500

### (5) RUBBER TIRED LOADERS

- Terex 72-21.....\$5900
- Cat 922B.....\$8,500
- Clark 45C.....\$16,500
- JD 544B..... Call
- Ford A66..... Call

### (15) BACKHOES

- (6) Rigid Hoe Attachments.....\$2500 & Up
- (6) 3 Pt. Hoe Attachments.....\$2500 & Up
- Case 530CK.....\$3500
- MF 300 Gas.....\$3500
- IH 3500.....\$4800
- AC 715C.....\$5500
- Wainroy.....\$5900
- Case 580CK.....\$7500
- AC 715B.....\$8500
- IH 3600 Ext.....\$9500
- IH 260A.....\$11,500
- JD 410 Cab.....\$11,500
- Case 680G.....\$13,500
- Case 580D.....\$14,500
- Case 580D 4x4-EXT.....\$20,000
- Case 580K 4x4-ROPS.....\$24,500
- Case 580K 4x4-Cab.....\$28,500

### (9) TRAILERS

- 3 Axle Tag-A-Long.....\$1200
- 3 Axle Tag-A-Long.....\$1400
- 1989 2 Axle 5 Ton.....\$1795
- 3 Axle Tag-A-Long.....\$2400
- 2 Axle Dump-On Road.....\$2400
- 1972 Fruehauf 43' Flat.....\$2900



International 500 Diesel Dozer/Loader 6 Way Blade, Like New Loader Bucket, Power Take Off, Runs Good.

MUST GO \$6,000



Allis Chalmers "D" Grader, Gas Engine, Operates OK.

ONLY \$4,900

### (3) SKID STEER LOADERS

- Clark 533-Diesel.....\$4900
- Case 1845.....\$8900
- NH 785 Diesel.....\$10,000

### MISC. CONSTRUCTION

- (100+) Used Hoe Buckets.. Come Look
- (75) Loader Buckets.. Come Look
- (75) Set Forklift Forks..... Come Look
- Ford 4500 Frost Tooth.....\$395
- 3 Pt. Hitch For Case 580.....\$695
- JD 640B Log Skidder Blade..\$1000
- Root Rake 7'.....\$1400
- Ripper.....\$1500
- (3) Tree Planters.... \$350-\$650
- (2) Tree Shearer. \$1500-\$3500
- Giant Leaf Vacuum's..... 2 For \$2000
- Sheepsfoot Roller.\$3900
- Schramm 160 Air Comp.....\$3900
- Snowblower For Big Loader.....\$3900
- (2) Sweepers.....\$600 to \$2900
- Woodchuck 12" Wood Chipper.....\$4500
- 1-2 Ton Vibratory Roller.....\$4900
- Huber Maintainer..\$4900
- Sheepsfoot Roller.\$4900
- AC D Grader.....\$4900
- Jeagar 175 Diesel Compressor.....\$4900
- 16" Olathe Wood Chipper.....\$5500
- Construction Ramp.....\$7500
- American Lincoln Sweeper.....\$11,500
- JD 760 Scraper..\$13,700

### NEW EQUIPMENT

- Boom Poles.....\$125
- King Kutter Scraper Blades 6', 7' And 8'..... \$225-\$995
- Seeders- Broadcasters- 3 Pt.....\$395
- King Kutter Stone Rakes 4', 5', 6', 7' & 8'..... \$395-\$595
- King Kutter Post Hole Diggers 6", 9" And 12" Augers.....\$495
- King Kutter Discs 5 1/2' And 6 1/2' 3 Pt..... \$495-\$595
- King Kutter Grading Boxes 4', 5', 6', 7' & 8'. \$495-\$595
- King Kutter Rotary Mowers 4', 5' And 6' 3 Pt. And Pull Type.\$595 & Up
- Aerator 5'- 3 Pt.....\$695
- King Kutter Finish Mowers 4', 5', 6' & 7'- 3 Pt..... \$995-\$1295
- Long Rototillers 55", 63", & 71"..... \$1495-\$1995
- (7) LOG SKIDDERS
- Tree Farmer.....\$2900
- Pettibone PT 18....\$3900
- Tree Farmer C5D..\$4900
- Clark Ranger 664B.....\$9500
- Clark Ranger 666B.....\$9500
- (2) JD 540B w/ Grapple.....\$12,500/\$14,500

## HUNDREDS OF CRAWLERS & BACKHOES FOR SALVAGE

EXCELLENT SELECTION OF AFFORDABLE USED EQUIPMENT