

**Jefferson County DHIA
February, 1991
Rolling Herd Average**

Name	Brd.	No. Cows	% Days In Milk	Milk Lbs.	Fat Lbs.	Protein Lbs.
Londondale Farm	B3	57.1	90.6	22,223	857	703
Laurel Valley Dairy	B3	31.8	93.2	20,422	800	698
Way-Win Valley Farm	B3	39.6	87.0	20,650	765	654
Michael C Varner	3	30.2	85.1	21,025	702	648
Lee Ann Dairy Farm	3	34.9	86.6	20,487	679	638
Burk-Lin Farms	B3	29.7	86.4	20,555	725	632
Donald Dixon	B3	39.3	90.6	19,984	767	630
Silverado R Holstein	3	32.7	85.7	18,547	655	618
Mowrey's Sprucelawn	3	90.5	88.9	19,379	714	615
Gregory L Kennis	B3	22.5	87.9	19,359	714	593
Vivian Farms	B3	44.6	85.9	19,524	617	593
Mitchells Dairy Farm	B3	81.9	86.5	18,547	712	592
Reitz Haven Farm	3	67.6	83.6	18,006	646	578
Windfall Run Farm	B3	51.5	87.7	17,996	652	573
Himes Hills Farms	B3	69.9	85.1	16,861	642	547
Laurel Valley Dairy	B4	1.7	100.0	13,710	754	538
Knapp Brothers Farm	G3	67.2	88.3	16,631	645	534
Pipp'En Mare Farm	B3	17.6	82.7	16,236	607	533
Becker Acres	B3	21.4	88.8	17,084	594	531

Raybuck's Dairy	B3	25.3	85.7	17,486	581	525
Pine Valley Farm	B3	48.6	86.5	16,576	621	522
Jean's Jersey Farm	4	6.4	88.9	14,213	673	520
Luther Bunite	G3	137.1	88.1	15,640	629	512
Smith Oak Farm	3	70.0	85.5	16,036	616	512
Harvestore Hill Farm	B4	106.3	89.8	13,122	622	499
Warren D Pifer	2	48.8	86.2	13,263	608	471

Lactation Report

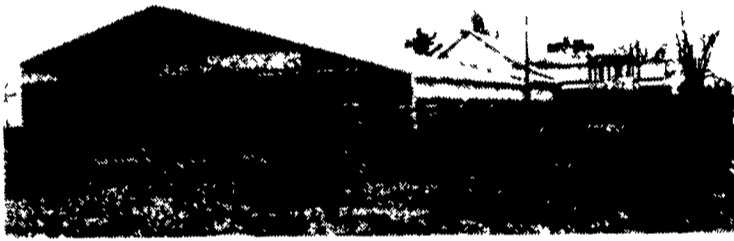
Mowreys Sprucelawn Betsy	H	4-3	28,646	864	967
Silverado R Holstein Barb	H	3-1	25,505	781	761
Reitz Haven Farm Fay	H	4-2	24,943	780	812
Londondale Farm Loretta	H	5-8	27,172	780	1003
Lilac	H	7-4	25,958	760	873
Gregory L Kennis Maria	H	5-9	25,933	759	1004
Donald Dixon Billie	H	7-8	22,594	758	852
Michael C Varner Bambi	H	5-2	23,802	743	839
Reitz Haven Farm Orange	H	7-0	21,108	719	902
Londondale Farm Dixie	H	3-2	22,343	715	900
Burk-Lin Farms Elaine	H	4-4	21,392	707	859
Gregory L Kennis Connie	H	4-3	23,028	679	751
Mowreys Sprucelawn Jello	H	4-10	21,732	669	779

**Northumberland County DHIA
March, 1991
Rolling Herd Average**

Name	Brd.	No. Cows	% Days In Milk	Milk Lbs.	Fat Lbs.	Protein Lbs.
Fred & Tom Strouse	B3	60.2	87.9	23,454	873	727
Truckenmiller Farms	B3	75.4	88.9	21,329	804	681
RMD Shultz Farms	B3	90.1	87.7	20,733	766	666
Shoch Manor Farms	B3	56.7	89.7	19,884	743	656
Brent Buckwalter	3	102.7	84.7	19,530	710	629
Clayton H Swartz	B3	33.1	88.3	19,189	736	620
Jerry Smith	3	49.7	88.9	18,818	701	620
Lloyd B Zimmerman	G3	109.7	88.9	18,632	691	603
Ernest L Wolfe	B3	58.9	84.9	18,930	723	602
Irvin Reynolds	B3	74.6	87.4	18,479	635	599
Kenneth R Weaver	B3	51.8	88.0	18,417	700	597
Ronald F Wallace	G3	45.0	88.9	18,759	677	594
Lehman Brothers	B3	43.7	86.0	19,028	648	592
Wayne Klock	B3	34.7	89.0	17,768	633	589
Luke N Reback	B3	46.6	90.2	18,540	726	581
Orville Shultz	B3	56.5	88.6	17,949	658	576
Matthew A Lucas	B3	33.6	86.1	17,162	602	562
William A Betz	B3	50.2	90.2	18,373	654	561

POLE BUILDINGS

By Sam Stoltzfus



Maintenance Free
Painted, Galvanized Roof & Siding
Pressure Treated Poles & Skirting

TALBOTVILLE CONSTRUCTION

Honey Brook, PA
(215) 273-2870 (215) 273-3495 Res.

GLENWOOD METAL FORMING
809 Glenwood Drive Ephrata, PA 17522
717-733-9590

Roofing And Siding

29 Gauge Galvanize 29 Gauge Painted
26 Gauge Galvalume 26 Gauge Painted

All Panels Cut To Length -
Coverage 36" Width

We Also Stock The Following Items:

- Pre-Hung Doors
- Agri Build Windows
- Roll Door Track
- Ridge Vents
- Ridgulators
- Trolleys and Hardware

A new Product In Our Line

STANDING SEAM ROOFING

Manufactured at the job site

NOW YOU CAN CALL US TOLL-FREE AT
1-800-582-9956

ROHRER'S

THE COMPLETE SEED STORE

Farm--Garden--Flower--Lawn Grass Seeds

CROP PROTECTANT PRODUCTS

Agrox D-L Plus.....1.8 oz. Pk.	\$2.60
Beeline.....1 Lb.	\$9.98
Captan 50W.....5 Lb.	\$17.50
Dacthal 75W.....4 Lb.	\$27.80
Diquat.....1 Gal.	\$85.50
Merge.....1 Gal.	\$24.50
Devrinol 50W.....4 Lb.	\$33.00
Frost Guard.....1 Gal.	\$24.50
Guthion 35W.....3 1/2 Lb.	\$18.90
Lannate.....8 Oz.	\$9.90
Loraban 50.....5 Lb.	\$33.75
Malathion 25W.....4 Lb.	\$8.40
Marlate 50W.....4 Lb.	\$18.00
Plyac Spread/Sticker...1 Gal.	\$28.50
Ridomil 2E.....1 Qt.	\$44.50
Streptomycin.....8 Oz.	\$5.95
Foam Gard.....1 Qt.	\$9.95
AV-70 Plus Algacide.....Gal	\$18.50
Carbamate 76.....5 Lb.	\$19.75
Imidan 50W.....5 Lb.	\$29.75
Isotox Seed	
Treater (F).....1 Lb.	\$7.95
Karmex DF.....4 Lb.	\$23.00
Manzate 200 DF.....6 Lb.	\$21.60
Orthene Ornamental 1 Lb.	\$13.49
Orthene Tobacco...1 Lb.	\$10.50
Ortho Gro Starter	
Sol (8-16-8).....5 Gal.	\$37.50
Pramitol.....1 Gal.	\$23.50
Pyrenone Crop Spray.....Qt.	\$64.50
Roundup.....Qt.	\$45.50
Roundup.....1 Gal.	\$89.50
Roundup..2 1/2 Gal. Jug	\$141.25
Sevin 50W.....5 Lb.	\$16.25
Dipel.....Qt.	\$10.50
Weeder 64.....1 Gal.	\$14.50
Unifilm 707.....1 Gal.	\$12.50

ROHRER'S FANCY LAWN GRASS
FOR A GREENER, FINER LAWN



ECONOMICAL ONE LB. COVERS 250 SQ. FT.

1 lb. box	\$2.95	25 lb. bag	\$39.50
3 lb. box	\$7.95	50 lb. bag	\$77.00

ROHRER'S GOOD TURF LAWN GRASS SEED

GOOD GENERAL PURPOSE MIXTURE
1 LB. COVERS 250 SQ. FT.

1 lb. box	\$2.60	25 lb. bag	\$34.25
3 lb. box	\$6.95	50 lb. bag	\$66.50

ATHLETIC LAWN GRASS SEED

1 lb. box	\$2.25	25 lb. bag	\$30.25
3 lb. box	\$6.25	50 lb. bag	\$58.50

SHADY LAWN GRASS MIXTURE

Best For Shaded Areas

1 Lb. Box	\$2.95	10 Lb. Bag	\$19.50
3 Lb. Box	\$7.95	25 Lb. Bag	\$38.25

Highland Pasture Mixture.....50 lb. bag \$85.00

Waterway Grass Seed Mixture.....50 lb. bag \$65.50

Horse Pasture Mixture.....50 lb. bag \$84.50

CROWN VETCH

1/2 Lb.....\$9.75

1 To 9 Lb.....\$15.50 Per Lb.

10 Lb. Or More \$14.50 Per Lb.

Innoculation Included

STORE HOURS

7:30 A.M.
to
5:00 P.M.
Saturday
7:30 A.M. to 3 P.M.

P. L. ROHRER & BRO., INC.

Smoketown, Pa.

Ph: 717-299-2571
FAX 717-299-5347