



**M.H. MARTIN CO.**  
LANCASTER COUNTY, PA  
717-738-1312

**MUSHROOM MULCH** Delivered  
100 bu. \$60.00 300 bu. \$90.00 1,000 bu. \$150.00

**SHRUBBERY MULCH** - Delivered  
5 yds. \$140.00 10 yds. \$250.00 15 yds. \$330.00

Trailer Load Lots & Delivered \$15.00 Per yd.

**POULTRY MANURE** Delivered  
\$12.00 per ton

17 PLANTS

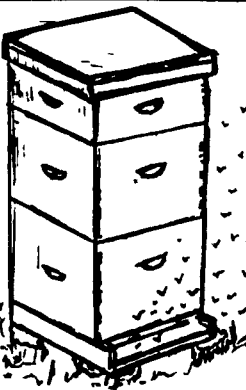
10,000 hardy Bell Captain pepper plants in 72 cells. Ready 1st and 2nd week May. Tomatoes and cantaloupes and flowers. Hidden Acres. Box 212A, Atglen, PA 19310.

Raspberry Plants: Grown from certified stock. Thousands available. \$39.50 for 100. Rhubarb roots, strawberry plants. York County. Zip 17313 (717)244-7157.

Raspberry Plants: Grown from certified stock. Thousands available. \$39.50 for 100. Rhubarb ROOTS, strawberry plants. York County. Zip 17313 (717)244-7157.

Sweet Potato Plants Bardemans, Jewels, Jets, Centennials, Nuggets. Post paid 25 1/\$5.49, 50 1/\$7.98, 100 1/\$11.95. George's Plant Farm, Martin, TENN, 38237. (901)587-9477.

Tomato plants grown in flats. Ready to plant May 15th and June 15th. Call 717-656-2120.



**RAINBOW APIARY**

668 Turkey Hill Rd. Rt. 625  
East Earl, PA 17519-9796  
M-W-F 5 PM TO 10 PM, SAT 10 AM-4 PM

(215) 445-6674

Beekeeping Supplies  
Pollination Service  
Package Bees & Queens -  
Starting April 12 Pick Up  
@ Store Or Shipped Direct

**Micky Pegram Tobacco Plants Maryland 609**

Will take orders after April 29 for delivery 1st week in May, At Garden Spot Tobacco Warehouse  
**(717) 354-9715**

**KREIDER'S MUM FARM**  
900 Kreider Rd.  
Lititz, PA 17543  
(717) 626-6805



3 1/2" Potted Mum Plants, Available After Middle Of May \$1.25 Each  
5 Doz. Flats of Mixed Varieties Month of June \$20.00  
Plants Can Be Shipped U.P.S.  
Write or Call For Wholesale Prices On Started Plants Or Unrooted Cuttings.

18 FRUITS & VEGETABLES

DRY EDIBLE BEANS: Interested in growing beans? Handling pinks, navys, blacks, kuneys and cranberries. Call Cardinal Bean Co. (717)359-9542 or write: 3465 Taneytown Rd., Gettysburg, PA, 17325.

Fresh asparagus, rhubarb, crisp new spinach, too! Harvesting daily. Fresh is BEST! Wholesale or retail. York County. Zip 17313. (717)244-7157.

Fruit Sprayer 100gal. wood tank, air chamber, gasoline engine, belts, high pressure hose, 4-steel wheels. \$75.00. Isaac Huyard, 356 N. Railroad Ave., New Holland, PA 17557.

Market stand, 14x14 w/porch, nearly new, nice roadside stand on skids, counters, shelves. All for \$1400. Hidden Acres, Box 212A, Atglen, PA 19310.

19 NURSERY

Eight very large elm trees that CAN be moved by a professional, very rare because of size. 717/566-7593.

**NOW AVAILABLE:**

Kasco Pesticide Helmets for head, lung & facial protection against toxic spray materials. Also light weight Tyvek protective suits and durable nitrile gloves. Now in stock pulp berry boxes and cardboard pick your own containers. See us at our convenient Boyertown, Pa. location.

**Frecon Orchard Supplies**  
215-367-2933

**EVERGREEN SEEDLINGS & TRANSPLANTS.**

Spruce, Pine, Fir for Christmas trees & nursery stock. Write or call for price list. Croshaw Nursery, P.O. Box 339, Columbus, NJ. 08022. or call 609-298-0477

IH656 hydro hi-clearance tractor w/Jiffy digger, will go over 4' tall trees, very good condition, \$7500 OBO. 717-664-4587.

LANDSCAPE TREES AND SHRUBS. Reasonable White Pine, Hemlock, Douglas Fir, Blue-Norway-White Spruce, Junipers, Pyramidal Arborvitae. Ben-singer's Nursery, New Ringgold, PA. 717-386-2107

Mulch for sale year 'round. Buyers come in look at our mulch. Contact D.H. Byler, HCR 61, Box 32, Belleville, PA 17004. (717)483-6446, leave message.

Rooted cuttings, potted-Dwf., Alberta Spruce, "Rhinegold" Avbvt., std. Hinoki, Dwf. Blue, Gold Thread Cypress, Crimson Pygmy Barberry, Coast Leucothe .50¢ ea., Jpr. Skyrocket .60¢ ea., More-717-545-7142.

TREE TRANSPLANTERS FOR SALE: 3 Models available for planting Christmas Trees, Nursery Stock, or Shade Trees. Extremely Heavy duty. Also, USED, CT-10 Mechanical Transplanter. TREE PLANT DESIGN INC., RD1, Box 104, New Ringgold, PA 17960. 717-386-3515.

Greenhouse sections, location is Cocalco Road, Denver.  
Best Offer!  
(717) 272-5786 after 7 p.m.

20 LAWN & GARDEN

Bolens Garden Tractor Parts and Attachments, large assortment, reasonably priced. 215/822-6026.

Grass catcher for Grasshopper mower, model 15, lever activated. (301)833-1847.

IH-CUB LoBoy w/fast hitch plow, Harrower, Mott mower, sickle, & snow plow. Clean, strong. 215-983-9149.

JD F910 front mount mower w/vacuum system, 632 hours, asking \$4,400. (717)483-6994.

Jonsered 6 yrs. old, 930 chain saw, 28in bar, overhauled, \$350.00. 215-926-6003.

New JD 48" Rear Deck Mower, for compact tractor. \$750. 717/733-6698 ask for Clair.

Spring Sale on all Grasshopper mowers. 10% off of list price. Financing available. Call (301)833-1847.

Steiner 20hp mower w/62" deck and bagger attachment. Only \$2,250. (301)833-1847

21 SERVICES OFFERED

Cash Buyer of Standing Timber

**Guy Sexton**  
Logging and Timber Management

1148 Pilgrims Pathway  
RD #2  
Peach Bottom, PA 17563  
(717) 548-3422 or (717) 548-3428



RODNY GREENTREES offers 1 dozen evergreens planted on your property for just \$99.95. Bucks and Montgomery counties ONLY. Other areas priced accordingly. (215)723-8239.

**Cocoa shell mulch, bag or bulk**  
(717) 653-9175

Azaleas, Rhodod, Shrubs & Trees For Landscaping. Call for free price list.  
**609-935-4675**  
Maskells Mill Nurseries  
Salem Co., NJ

21 SERVICES OFFERED

HUBER BUILDERS Farm & Home Repairs. Additions, slate work, concrete pumping, interior exterior painting large or small runs, custom moulding, CCA treated fence post 4"x6" \$3.75/ea. Quarryville, PA. 717-786-7046.

MICRO DIET! Complete meals that are affordable, convenient, nutritious, medically endorsed. Lose 14 pounds monthly safely, easily and without introductory or office fees! Millions of worldwide success stories! Free no obligation info mailed 215-373-7533 or 1-800-359-7533. Ron Heckman independent advisor.

Petroleum Tanks Removed, gas diesel heating, oil-D E R. certified tank removal & installation. Richard T. Wimer, 431 Springville Rd., Quarryville, Pa. 17566. 717-786-4758

POLLINATION Tony or Ellen B HONEY BEE REMOVAL SPECIALIST. Wasps & Hornets. Venomous Insects. 1-800-47-STING

**BRUBAKERS' CUSTOM BAGGING**

6 and 8' Bags  
81 Kreider Rd., Myerstown, PA 17067  
717-866-6859



Home: 215-445-4004 Shop: 215-286-5619

**WHITE HALL GIFTS**

Morgantown, PA  
9 A.M. to 5 P.M.  
Mailing Address:  
117 Pool Forge Rd.,  
East Earl, PA 17519  
Wholesale - Retail  
Picnic Tables  
Pressure Treated Lumber

22 CUSTOM WORK

**CUSTOM BAGGING**

**HARRY WILL**  
717-949-2366 or  
1-800-782-1757



**Weaver's Plumbing And Excavating**

Basements  
Ponds  
Field Tilling  
Manure Pits  
Lagoons  
Septic Systems  
Sand Mounds



For Jobs Large or Small  
Give Us A Call  
**(717) 933-9016**

**"We Want Your Business" CUSTOM BAGGING**

Contact  
**CHARVIN FARM**  
717-665-7471  
1 (800) 352-3785

**"Bagging With Experience"**

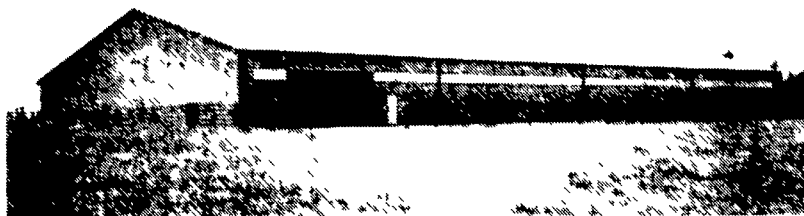
22 CUSTOM WORK

**Smucker Construction**

6086 Beaver Dam Road  
Narvon, Pa. 17555  
717-768-8606

Ans. Serv. 717-354-4374

Call or write for a free estimate on the building of your choice



60x104 w/30' Stable Area

90x232 Arena

Construction and Custom Design of:



- Arenas
- Horse Barns
- Dairy Barns
- Storage Buildings