

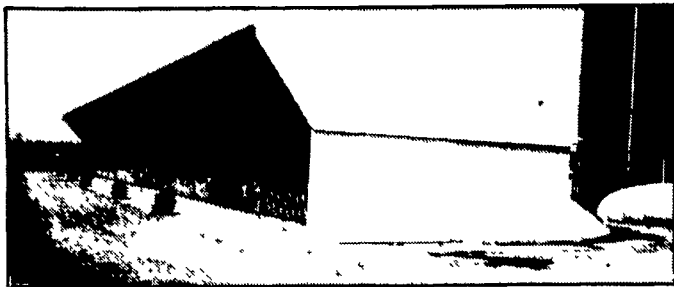
# Lancaster Co. DHIA

(Continued from Page C20)

David L. Landis 321	RH	4-5	305	21,361	3.4	734	4.1	888	Fultonway Farm Inc. Karen	RH	3-3	305	25,357	2.8	710	3.5	909
Danda Farms 79	GrH	6-1	305	21,033	3.4	731	4.2	887	Earl N. Landis Bridget	RH	2-10	305	21,238	3.3	710	3.8	821
Welsh-Vista Farms 49	RH	7-7	305	22,967	3.1	730	3.6	830	Homer G. Hess Bessie	RH	2-0	305	26,175	2.7	709	3.2	840
89	GrH	6-10	305	23,259	3.0	709	3.3	783	Gordon E. Herr 90	GrH		305	23,613	3.0	709	3.5	848
Richard N. Sauder Darlene	RH	5-4	300	22,233	3.2	730	3.9	873	Twin Oak Farms 419	GrH	7-3	305	22,850	3.1	709	3.3	762
Alepa Farms 649	GrH	3-9	305	20,642	3.5	728	4.1	852	Trout Spring Farm Lady	RH	9-9	305	22,016	3.2	709	3.3	727
Daryl & Sam Martin 265	GrH	4-4	305	22,820	3.1	726	4.2	976	L. Clair Miller 50	RH	3-10	305	21,680	3.2	709	2.8	619
Fan	GrH	3-3	305	23,071	3.0	696	3.7	861	Ken & Lisa Wiker Della	GrH	4-10	305	25,035	2.8	708	3.2	806
John R. & Rick Groff Flora	RH	2-11	305	22,991	3.1	726	3.5	812	Millstone Acres 417	GrH	4-11	305	23,900	2.9	707	3.5	855
Bart Dell Farm Eve 168	RH	1-11	305	22,275	3.2	726	2.4	541	Lenewood Farm Tilda	RH	2-7	305	22,079	3.2	707	3.5	779
Paul S. Horning Elaine	RH	3-7	305	24,274	2.9	725	3.3	811	R. Edwin Harnish Starlit	RH	5-10	305	21,966	3.2	706	3.7	825
Rhoda	RH	6-10	287	22,329	3.2	719	3.5	782	Clay Farm Alison	RH	6-5	305	23,829	2.9	705	3.1	750
Wea-Land Farm Abra	RH	6-11	305	22,773	3.1	725	3.9	896	Glenn M. Shelly 14	RH	6-7	305	23,020	3.0	704	3.4	787
Lucky	RH	4-7	305	23,487	3.0	717	3.6	848	Noah Jay Fisher Chris	GrH	3-11	305	22,916	3.0	703	3.1	729
Spring Belle Farm Lucky	RH	3-11	304	22,754	3.1	725	4.3	987	Brandyvale Farm Class	RH	5-3	305	24,650	2.8	702	3.1	783
Harvey W. Stoltzfus Minnie	RH	8-5	305	22,753	3.1	725	3.0	704	Henry D. Zimmerman 3014	GrH	9-6	305	23,035	3.0	702	3.8	882
Marvin K. Witmer Lena	RH	7-10	305	25,524	2.8	724	3.6	931	John G. Good Elma	RH	4-11	305	23,022	3.0	702	3.2	758
Glenn R. Binkley 130	GrH	3-1	305	23,604	3.0	724	3.6	855	S & A Kreider & Sons 299	GrH	4-7	291	22,431	3.1	695	3.4	775
Elmer M. High 3	RH	2-1	305	22,626	3.2	724	3.8	873	Daniel K. Kauffman Maggie	RH	4-8	305	21,807	3.2	702	3.6	800
John e. Coleman Jr. Gloria	RH	1-11	305	23,279	3.1	722	4.0	941	Curvin W. Nolt 130	RH	5-10	305	23,772	2.9	701	3.2	774
Birch	RH	4-3	305	22,111	3.1	699	3.8	848	Lawrence W. Hurst Jessie	RH	3-7	305	26,386	2.6	699	2.8	753
Quarry Edge Farm Wanda	RH	6-9	305	23,043	3.1	721	3.8	881	Samuel L. Allgyer Comet	GrH		305	23,873	2.9	699	3.0	719
Nelson H. Weaver 3	RH	3-4	305	23,880	3.0	718	3.6	866	New Acres 71	GrH	3-4	305	23,494	2.9	699	3.5	835
Donald R. Bare 71	RH	3-6	305	23,618	3.0	717	3.0	712	Robert & Linda Sensenig 24	GrH	4-1	305	22,066	3.1	698	3.3	738
Albert Breneman 64 Geog	RH	3-8	305	22,827	3.1	716	3.7	852	Melvin r. Eby Weather	RH	2-11	305	21,506	3.2	698	3.5	769
Vernon W. Heisey Kay	RH	5-0	305	25,311	2.8	715	3.4	872	David W. Sweigart 154	GrH	3-3	305	19,999	3.4	697	3.1	623
Stephen L. Hershe, 25	RH	4-2	305	24,185	2.9	713	3.3	800	John G. Good Dewy	GrH	5-3	305	21,766	3.1	695	3.6	787
43	RH	7-9	305	21,803	3.2	703	4.0	883	Mar-Vil Acres Farm 27	GrH	3-1	305	22,194	3.1	695	3.8	859
57	RH	3-3	305	21,440	3.2	700	2.8	618	Jonas M. Zeiset 38	GrH	3-7	305	22,112	3.1	695	4.0	896
Amos E. Stoltzfus Diann	GrH	8-1	305	24,145	2.9	712	3.5	857	Harry H. Ranck Jr. Ellie	RH	4-2	300	21,143	3.2	695	3.7	793
Sylvia	GrH	8-1	305	24,682	2.8	710	2.7	680									
Debra	RH	4-4	287	21,138	3.3	704	3.7	792									
James A. Hess Julie	RH	5-6	305	24,173	2.9	711	3.0	734									
Thomas C. Lapp Debra	RH	3-7	305	21,410	3.3	711	3.4	736									

**MILK**  
**AMERICA'S HEALTH KICK**

**-ATTENTION DAIRY FARMERS-**  
WHY NOT CONSIDER ADDING A "VIRGINIA-STYLE"  
HEIFER BARN? IT CAN MAKE YOUR OPERATION  
MORE EFFICIENT AND EASIER TO MANAGE  
(It'll Cost Less Than You Think)



Open Front With Feed Alley And Tile Feed Trough, Adjustable Curtain Or Vent Doors On Backside Of Building.



8'x12' Poured Concrete Pit With Waffle Slats And Poured Concrete Pen Dividers, Sleeping Area Sloped To Slats.

★ PITS CAN BE S.C.S. APPROVED FOR COST SHARING ★

For Free Estimates And Information Contact Larry Horst:  
Home (717) 656-7799 Office (717) 354-4740

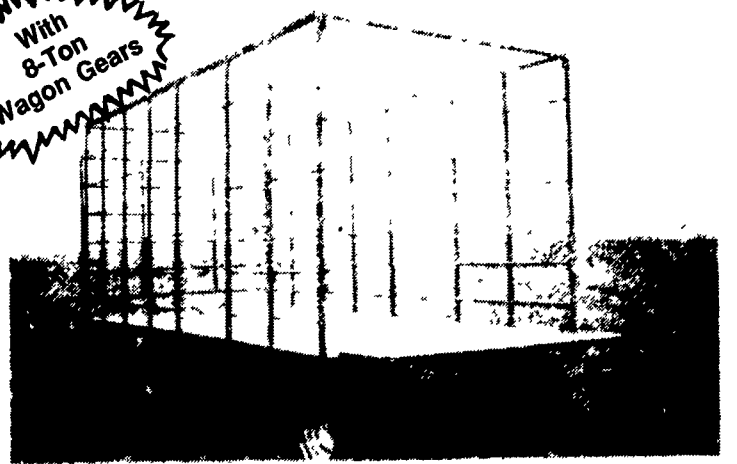
Building By

**KING CONSTRUCTION CO.**

601 Overly Grove Rd., New Holland, PA 17557 (717) 354-4740

## STEEL BALE BOXES

With  
8-Ton  
Wagon Gears



3 Sizes Available... 16', 18', 20'  
with or without running gear  
• Also will fit sides onto your flat wagon

MFD. BY: **STOLTZFUS WOODWORK**  
Rt. 897 North — Gap, PA 17527  
717-442-8972

4 BUILDINGS AND SUPPLIES

## Pole Buildings

Quality Custom Designed Buildings to Fit Your Needs  
All Sizes & Types  
Check our Prices  
FREE Estimates - Fully Insured

*KW*

**Construction**

Myerstown, PA

(717) 933-8294