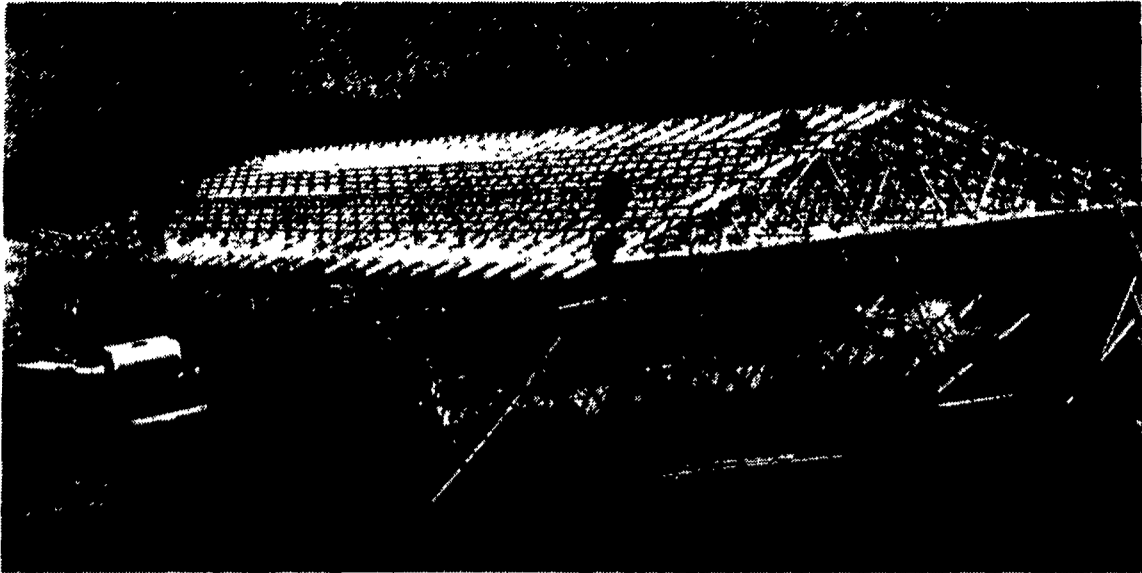


Business News



Buffalo Valley Produce Auction, Mifflinburg, is in the final phase of an expansion project, which will be ready when the season begins May 7. Auctions are every Tuesday and Thursday at 11 a.m.

Buffalo Valley Auction Expands

MIFFLINBURG (Union Co.) — Because of an 87½% increase in volume of sales in 1990, Buffalo Valley Produce Auction Inc., has recently started an expansion project, which is due to be completed by their first auction of 1991 on Tues., May 7.

The new facilities include a 60 feet x 128 feet building which will serve as a buyer's dock, and a two-lane drive through. Also included in this expansion project are new

offices, restroom facilities, and lobby area.

Buffalo Valley Produce Auction will be starting its 5th year of operations on May 7, at 11 a.m. with an open house and auction of bedding plants, flowers, hanging baskets, produce, etc.

Construction of the new facility was accomplished by a barn raising on Mar. 20, at which time stockholders and farmers joined efforts by donating their labor to

reach this goal.

The sale of produce by auction is the fastest growing method of marketing wholesale produce in Pennsylvania.

Buffalo Valley Produce Auction is located just off of Rt. 45 between Lewisburg and Mifflinburg. Auctions will be held every Tuesday and Thursday at 11 a.m.

Phone (717) 966-1151 for more information.

Fancy Furrow Farm Honored With Performance Award

EASTON (Northampton) — Fancy Furrow Farm Ag Equipment Inc. has been recognized for special performance in 1990 by Badger Northland Inc.

Each year Badger Northland Inc. recognizes one dealer in each of its sales districts for outstanding performance within his trade area. The criteria for selecting the dealer for this prestigious award includes:

- Quality of the dealership's service and installation work.
- Appearance of the dealership facilities, which include the store, vehicles, service area, and employees.

- Participation in Badger programs, which includes service and sales schools, retail sales programs, advance factory order writing programs, etc.

- The dealer's attitude toward his customers, his employees, and

Badger Northland Inc.

- Sales promotion activity such as consistent local advertising, participation in local fairs and shows, and other community activities.

Each dealer in the sales district is judged accordingly in these areas. The dealership with the best overall performance is then recognized for their performance and receives the coveted "District Special Performance Award."

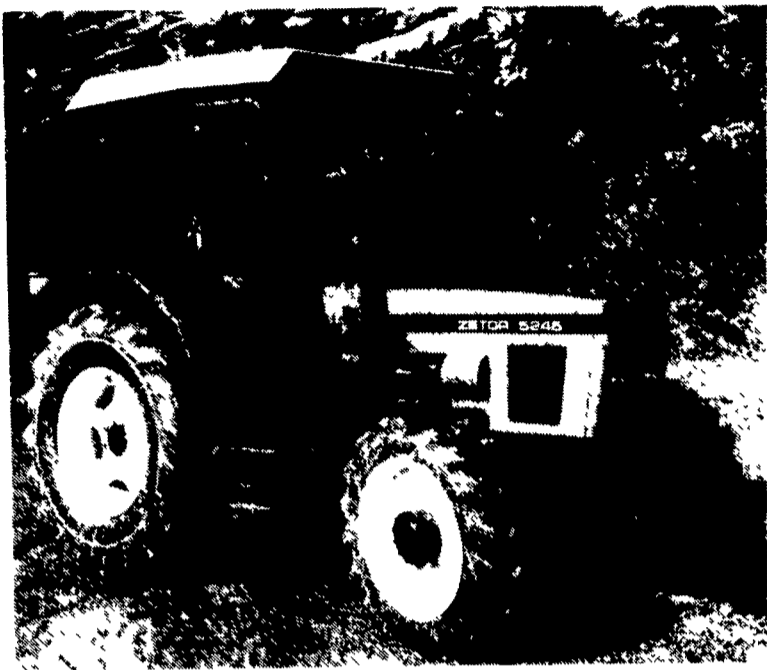


Fancy Furrow Farm Ag Equipment Inc., Easton, Pa., received the District Special Performance Award from Badger Northland Inc. From left, Ken Mansfield, district sales manager; Roberta Ackerman; and John Ackerman.

The FC350 achieves its maximum output and efficiency with seven cutting discs, each with two blades, and yields a fluffy, well-structured swath that is adjustable from 3 feet 7 inches to 7 feet 2 inches in width. For protection against damage, the FC350

mower-conditioner features a safety breakback mechanism and tows in line with the tractor for trouble-free transport.

For more information, contact Kuhn Farm Machinery, Inc., P.O. box 224, Vernon, N.Y. 13476, (315) 829-2620.



In recent Nebraska tractor tests, Zetor 4-wheel drive tractors placed first and second in drawbar fuel economy for 40 to 60 HP tractors. Zetor's Model 5245 tested out at 13.83 horsepower hours per gallon. The average for the 19 tractors tested was 13.12, which is 47 horsepower minutes per gallon less than Zetor's Model 7245.

Zetor Tractors Place High In Tests

HARRISBURG (Dauphin Co.) — In recent Nebraska tractor tests, Zetor 4-wheel drive tractors placed first and second in drawbar fuel economy for 40 to 60 HP tractors.

During the tests which were conducted at the University of Nebraska, fuel economy was measured in horsepower hours per gallon of fuel over a 10-hour cycle. The tractors were operated under a 75% load level.

Zetor's Model 5245 tested out at 13.83 horsepower hours per gallon. The average for the 19 tractors tested was 13.12, which is 47 horsepower minutes per gallon less than Zetor's Model 7245.

According to Josef Blecha,

executive vice president of American Jawa Ltd., Zetor's parent company, fuel efficiency is not a new feature for the Czechoslovakian-made tractors.

"Zetor's engineering has always been advanced," he said. "For almost 50 years, our tractors have had a reputation for fuel efficiency in over 90 countries around the world. They are tractors designed to stay in the field in countries where fuel is scarce and more expensive than it is here."

Zetor tractors and farm machinery are sold throughout the United States. For the name and address of your nearest dealer, call Zetor's General Sales Manager, Marvin Brown, at (717) 540-5618.

Conditioner Works 8-10 Acres Per Hour

VERNON, N.Y. — Kuhn Farm Machinery, a manufacturer of high-output agricultural equipment, is introducing a new

mower-conditioner capable of working 8 to 10 acres in one hour.

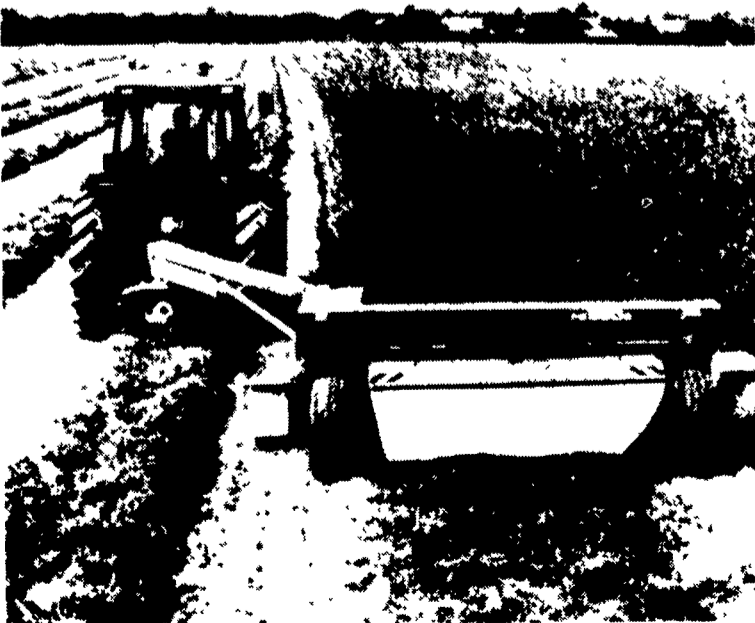
Kuhn's FC350 offers a cutting width of 11 foot 6 inches and a

conditioning width of 8 foot 10 inches. This machine conditions the crop as it mows to cut crop drying time by up to 50 percent.

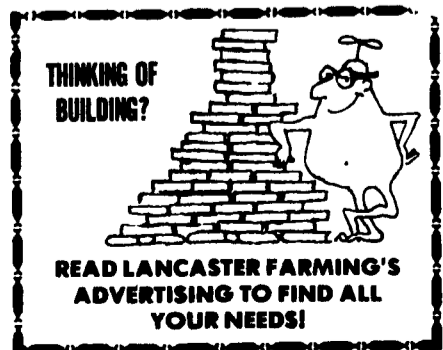
Utilizing a free swinging finger and adjustable comb conditioning mechanism geared specifically toward thin stem grass crops, the FC 350 opens the natural wax coating along the length of the crop stem, allowing maximum moisture content to evaporate. Conditioning intensity is determined by the degree of overlap between the comb teeth and the centrifugal-force activated rotor fingers.

This type of conditioning ensures excellent crop quality and higher nutritive value. If conventional mowing is required, the conditioning unit can be removed and a special guard fitted in its place.

The FC350, a towed model, requires 90 HP for operation and travels at a speed of 7-9 mph. It works equally well on flat or contoured surfaces without compromising cutting and conditioning quality because of adjustable heavy-duty suspension springs.



Kuhn's FC350 mower-conditioner offers a cutting width of 11 feet 6 inches and a conditioning width of 8 feet 10 inches. This machine conditions the crop as it mows to cut crop drying time by up to 50 percent.



THINKING OF BUILDING?

READ LANCASTER FARMING'S ADVERTISING TO FIND ALL YOUR NEEDS!