

Central U.S.

Carlot

Pork Report

April 24, 1991

Report supplied by USDA

CENTRAL U.S. CARLOT PORK REPORT FOB OMAHA BASIS INCLUDES MAJOR PRODUCTION AREAS IN MIDWEST AS OF 3:00 P.M. COMPARED TUESDAY'S 3:00 P.M. CLOSE: FRESH PORK LOINS FIRM TO .50 HIGHER; BOSTON BUTTS MOSTLY FIRM TO 4.00 HIGHER; SKND. HAMS WEAK TO MOSTLY 3.00 LOWER IN LIGHT TEST; SDLS. BELLIES 1.00 HIGHER IN VERY LIGHT TEST ON LIGHT SUPPLIES. DEMAND LIGHT TO MODERATE, MOVEMENT VERY SLOW ON LIGHT TO MOSTLY MODERATE SUPPLIES.

39.5 LOADS PORK CUTS

4.0 LOADS TRIM/PROCESS PORK PORK CUTS

LOINS, REG., FRESH

14-18 LBS. *, 10.5 LOADS, RANGE 101.00-108.50, WGHTD. AVG. 103.71.
1/2" TRIM, 14-18 LBS., 10.5 LOADS, RANGE 117.00-127.50, WGHTD. AVG. 122.67.

18-22 LBS. *, 1.0 LOADS, RANGE 108.50, WGHTD. AVG. 108.50.

1/2" TRIM 18-22 LBS., 1.0 LOADS, RANGE 124.50, WGHTD. AVG. 124.50.

COMBOS 22/UP LBS., RANGE 94.00, WGHTD. AVG. 94.00 A.

LOIN,BLS CTRCT 5-7 LBS.

2.5 LOADS, RANGE 205.00-210.00, WGHTD.AVG. 209.00.

BONELESS SIRLOIN .75-1 LB.

1.0 LOADS, RANGE 152.50-155.00, WGHTD. AVG. 153.75.

TENDERLOIN 1.25/DN LBS.

1.0 LOADS, RANGE 345.00-360.00, WGHTD. AVG. 352.50.

BOSTON BUTT

4-8 LBS. *, 4.5 LOADS, RANGE 78.00-88.00, WGHTD. AVG. 82.89.

1/2" TRIM 4-8 LBS., 4.5 LOADS, RANGE 97.00-106.00, WGHTD. AVG. 101.11.

COMBOS 8/UP LBS., RANGE 79.00, WGHTD. AVG. 79.00 A.

SPARERIB, FRESH

1.5-3.5 LBS., 1 LOAD, RANGE 126.00, WGHTD. AVG. 126.00.

3.5-5 LBS. AND UP, RANGE 106.00, WGHTD. AVG. 106.00 A.

5.5 AND UP LBS., RANGE 81.00,

WGHTD. AVG. 81.00 E.

SPARERIB, FROZEN

3.5-5.5 LBS., RANGE 114.00, WGHTD. AVG. 114.00 E.

LOIN BACKRIB (BOXED) FRESH/FROZEN

1.5 AND DOWN LBS., RANGE 277.00, WGHTD. AVG. 277.00 A.

1.75/DN LBS., RANGE 256.00-260.00, WGHTD. AVG. 258.00 A.

1.75-2.00 LBS., RANGE 250.00, WGHTD. AVG. 250.00 B.

HAM, SKINNED, SELECTED FRESH 20-26 LBS., 9.0 LOADS, RANGE 70.00-71.00, WGHTD. AVG. 70.44.

HAM, SKINNED, COMMODITY FRESH 17-20 LBS., UNQUOTED.

FRESH 20-26 LBS., 3 LOADS, RANGE 68.00-69.00, WGHTD. AVG. 68.33.

FRESH 26-32 LBS., RANGE 67.00-69.00, WGHTD. AVG. 68.00 B.

FRESH 32 AND UP LBS., 1 LOAD, RANGE 69.00, WGHTD. AVG. 69.00.

BELLY, SDLS, SKIN-ON, FRESH 10-12 LBS., RANGE 53.00-54.00, WGHTD. AVG. 53.40 A.

12-14 LBS., 2.0 LOADS, RANGE 56.50, WGHTD. AVG. 56.50.

14-16 LBS., 1.0 LOADS, RANGE 56.50, WGHTD. AVG. 56.50.

16-18 LBS., 2 LOADS, RANGE 55.00, WGHTD. AVG. 55.00.

18-20 LBS., RANGE 50.00, WGHTD. AVG. 50.00 A.

20-25 LBS., RANGE 46.00-48.00, WGHTD. AVG. 46.67 A.

PORK TRIMMINGS

BONELESS PROCESSING PORK (CHEMICAL LEAN)

COMBO 42% FRESH, 1.0 LOADS, RANGE 43.00, WGHTD. AVG. 43.00.

BOXED 42% FROZEN, RANGE 47.00, WGHTD. AVG. 47.00 E.

COMBO 72% FRESH, 1.0 LOADS, RANGE 74.00, WGHTD. AVG. 74.00.

BOXED 72% FROZEN, 1.0 LOADS, RANGE 78.00, WGHTD. AVG. 78.00.

BONELESS PICNIC MEAT

COMBO 72% FRESH, RANGE 74.00, WGHTD. AVG. 74.00 A.

BOXED 72% FROZEN, RANGE 81.00, WGHTD. AVG. 81.00 A.

SKINNED JOWLS

COMBO FRESH, RANGE 36.00-37.00, WGHTD. AVG. 36.80 A

BOXED FROZEN, 1.0 LOADS, RANGE 42.00, WGHTD. AVG. 42.00.

NOTE: (*)REFLECTS 1/2" TRIMMED PRODUCT BROUGHT BACK TO A REGULAR COMMODITY BASIS.

ABCDE AFTER QUOTES REPRESENTS DAYS SINCE LAST ACTUAL MARKET TEST. QUOTES ARE DROPPED AFTER 5 DAYS OF NO TEST OR BEFORE IF THEY NO LONGER REFLECT CURRENT MARKET CONDITIONS.

PORK CARCASS CUTOUT

Wednesday, April 24

ESTIMATED GROSS CUTOUT VALUES OF A 175 LB. HOG CARCASS BASED ON USDA CUTTING YIELD TESTS AND CARLOT PRICES. WEDNESDAY'S CARCASS GRADES & PRICES PER CWT.:

US#1 70.93, CHANGE FROM TUES.'S VALUE -.017; US#2 68.78, CHANGE -.014; US#3 66.62, CHANGE -.012; US#4 64.46, CHANGE -.011.

TODAY'S CALCULATIONS FOR US#2 175 LB. PORK CARCASS:

HAM, SKINNED, 14-20 LBS., 21.01% OF CARCASS, 72.00 VALUE; LOINS, 1/2" TRIM, 14-22 LBS., 20.33% OF CARCASS, 123.00 VALUE, CHANGE FROM TUES. -.075; BELLIES, SDLS., 12-14 LBS., 13.90% OF CARCASS, 56.50, CHANGE FROM TUES. 1.25; SPARERIBS, 3.5DN LBS., 3.03% OF CARCASS, 126.00.

PICNICS, 8-12 LBS., 10.31% OF CARCASS, 50.25 VALUE, CHANGE FROM TUES. -2.00; BUTTS, 1/2" TRIM, 4-8 LBS., 7.25% OF CARCASS, 101.00 VALUE, CHANGE 2.00.

JOWL, 2.85% OF CARCASS, 37.00 VALUE; NECKBONES, 1.52% OF CARCASS, 14.00 VALUE, CHANGE FROM TUES. -2.00.

FEET, 1.05% OF CARCASS, 15.00 VALUE, CHANGE FROM TUES. -1.00; TAILS 0.22% OF CARCASS, 43.00 VALUE.

TRIM 72%, 2.19% OF CARCASS, 74.00 VALUE, CHANGE FROM TUES. -3.00; LARD 10.85% OF CARCASS, 12.25 VALUE.

TOTAL CARCASS: 94.51%.

US #2 CARCASS VALUE PER CWT.: 68.78.

NOTE: VALUE MAY CHANGE WITHOUT ADEQUATE TEST.

Central U.S.

Carlot

Beef Report

April 24, 1991

Report supplied by USDA

COMPARED TO TUESDAY'S 3 P.M. REPORT: UTILITY COW CARCASSES STEADY TO FIRM WITH CUTTER 1.50-2.00 HIGHER. BULL CARCASSES STEADY TO 50 HIGHER. OFFERINGS AND DEMAND LIGHT TO MODERATE.

COW AND BULL CARCASSES FOB OMAHA BASIS

15 LOADS REPORTED
UT, BRK 2-4, 4 LOADS, RANGE 88.00-91.00, LATEST ESTB. MKT. 88.00-91.00.

UT, BNG 1-3 400 & UP, 4 LOADS, RANGE 92.00-93.00, LATEST ESTB. MKT. 92.00-93.00.

CUTTER 1-2 350 & UP, 4 LOADS, RANGE 102.00, LATEST ESTB. MKT. 102.00.

BULLS 500/UP, YG1, 3 LOADS, RANGE 109.00-109.50, LATEST ESTB. MKT. 109.00-109.50.

BONELESS PROCESSING BEEF/ BEEF TRIMMINGS

171 LOADS REPORTED

BONELESS PROCESSING BEEF 90% FOB OMAHA 1.00-2.00 HIGHER WITH FOB TEXAS 3.00-4.00 HIGHER THAN LAST TEST. OFFERINGS FAIRLY LIGHT, DEMAND MOSTLY MODERATE. BEEF TRIMMINGS LOWER MODERATE TO FAIRLY GOOD DEMAND AND MODERATE TO HEAVY OFFERINGS.

90% FRESH, 18 LOADS, RANGE 135.0-137.5, WT. AVG. 136.25.

90% FROZEN, UNQUOTED.

85% FRESH, UNQUOTED.

85% FROZEN, UNQUOTED.

75% FRESH, 4 LOADS, RANGE 105.0, WT. AVG. 105.00.

75% FROZEN, UNQUOTED.

65% FRESH, UNQUOTED.

65% FROZEN, UNQUOTED.

50% FRESH, 101 LOADS, RANGE 58.00-61.00, WT. AVG. 59.22.

50% FROZEN, 7 LOADS, RANGE 64.00-67.00, WT. AVG. 65.86.

50% BOX, 10 LOADS, RANGE 61.00-63.00, WT. AVG. 62.20.

BULL 92-94, 1 LOAD, RANGE 152.0, WT. AVG. 152.00.

FOB EAST TEXAS AND OKLAHOMA

90% FRESH, 15 LOADS, RANGE

137.0-137.5, WT. AVG. 137.13.

90% FROZEN, 3 LOADS, RANGE 136.0-136.5, WT. AVG. 136.33.

85% FRESH, UNQUOTED.

85% FROZEN, UNQUOTED.

75% FRESH, UNQUOTED.

75% FROZEN, UNQUOTED.

65% FRESH, UNQUOTED.

65% FROZEN, UNQUOTED.

BULL 92-94 UNQUOTED.

Morrisons Cove

Livestock

Martinsburg, Pa.

April 22, 1991

Report supplied by auction

CATTLE: 256. HIGH CHOICE AND PRIME 78.00-80.00, CHOICE 76.00-77.50, GOOD 73.25-75.50, STANDARD 68.00-73.50.

HEIFERS: CHOICE 72.50-76.75, GOOD 70.75-73.25.

COWS: UTILITY AND COMMERCIAL 50.25-58.00, CUTTERS 50.50-57.75, CANNER AND LOW CUTTER 38.50-50.25.

BULLOCKS: GOOD AND CHOICE 65.00-74.25.

BULLS: YG#1 59.00-66.75.

FEEDER CATTLE: STEERS 80.00-95.00, BULLS 73.00-91.00, HEIFERS 68.00-85.00.

CALVES: 243. PRIME 108.00-111.00; CHOICE 102.00-107.00; GOOD 88.00-101.00; STANDARD AND GOOD 81.00-87.00; 90-110 LBS. 80.00-84.00, 65-90 LBS. 60.00-79.00, HOLSTEIN BULLS 90-130 LBS. 160.00-201.00, HOLSTEIN HEIFERS 90-130 LBS. 140.00-171.00.

HOGS: 121. US#1-2 49.00-50.25, US#1-3 47.50-49.00.

SOWS: US#1-3 43.00-47.00.

BOARS: 39.00-40.75.

FEEDER PIGS: 5. US#1-3 20-35 LBS. 22.00-30.00; 1-3 35-50 LBS. NO MARKET TEST.

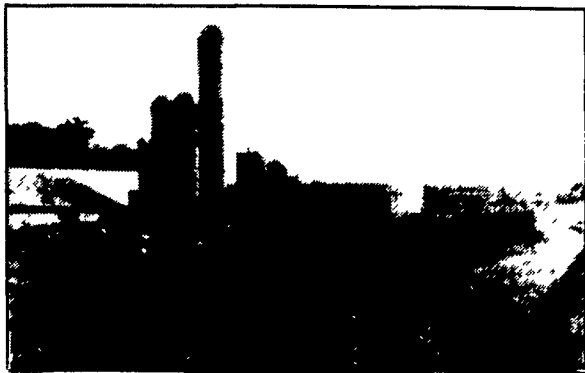
SHEEP: 55. CHOICE 60.00-65.00; GOOD 45.00-53.00; SLAUGHTER EWES 18.00-30.00; SPRING LAMBS UP TO 80.00.

GOATS: 12.00-67.00.

29 LOADS ALFALFA 97.00-160.00; TIMOTHY 50.00-97.50. 7 LOADS STRAW 59.00-74.00.

POURED SOLID CONCRETE STORAGE SYSTEMS

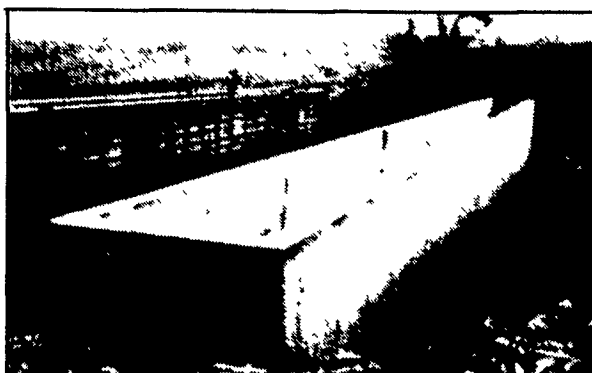
17 Years Experience In Pouring Concrete Manure Pits!



Above-Ground Liquid Manure Tank For Dairy Operation - 235,000 Gal.



In-Ground Liquid Manure Tank For Hog Operation - 324,000 Gal.



Hog House-Liquid Manure Pit

Construction Of In-Ground Liquid Manure Tank- 425,000 Gallons.



CONCRETE PUMPING SERVICE AVAILABLE



Mixer And Boom Trucks



92' Boom Placing Concrete



Placing Concrete On Site

Take the questions out of your new construction. Call Balmer Bros. for quality engineered walls.

All sizes available round or rectangular

Invest in Quality - It will last a lifetime.

Balmer Bros.

CONCRETE WORK, INC.

243 Miller Road Akron, PA 17501

(717) 733-0353 6:30 AM - 3:30 PM

(717) 859-2074 After 6:00 PM