

Carlisle Livestock Market

Carlisle, Pa.
Tuesday, April 16, 1991
SLAUGHTER STEERS: SELECT & CHOICE (LIGHTS) 75.00-78.25.
SLAUGHTER HEIFERS: CHOICE 73.75-78.00, SELECT 69.75-73.00, UTILITY & STANDARD 56.50-66.25.
SLAUGHTER COWS: STRONG DEMAND FOR EARLYBIRD PENS FIRM 3.00 HIGHER BREAK UT. & COMM. 52.25-55.00, CUTTER & BONING UT. 50.00-54.75, CANNER & LOW CUTTER 46.00-50.50, BIG MIDDLE 48.00-52.00.
SLAUGHTER FAT BULLS: Y.G.#1 62.00-64.00, Y.G.#2 55.00-60.00.
FEEDER CATTLE: VERY ACTIVE. FDR. STEERS (300-700 LBS.) MED. #1 100.00-117.50, MED.&LGR. #2 83.00-99.00, HOLSTEINS 68.00-101.00.
FDR. HEIFERS: (350-750 LBS.) MED. #1 91.00-101.00, MED.&LAR. #2 81.00-90.00.
FEEDER BULLS: (350-750 LBS.) MED. #1 93.00-100.00, MED.&LAR. #1 70.00-89.00, LARGE #2 61.00-69.00.
VEAL CALVES: VERY STRONG DEMAND. STANDARD & GOOD 112.00-156.00.
FARM BULLS: 160.00-203.00 (MOSTLY 190.00-200.00). FARM HEIFERS TO 179.00.
HOGS: BARROWS & GILTS. US NO. 1-3 (210-260 LB.) 48.50-49.50, OVER 270 LB. 46.60-47.00, 2&4'S (ALL WTS.) 40.50-48.00.
SOWS: ACTIVE OVER 450 LB. 46.75-48.25, UNDER 450 LB. 44.50-47.75, 2&4'S (ALL WTS.) 41.50-44.00.
BOARS: HEAVY 41.00-44.00.
FEEDER PIGS (BY THE HEAD): 30-45 LBS. 41.00-58.00.
SHEEP: EWES: 16.00-32.00.
LAMBS: GOOD & CHOICE (35-50 LBS.) 62.00-89.00, CHOICE (60-90 LBS.) 76.00-81.00. GOOD (ALL WT.) 59.00-66.00, MED. (ALL WT.) TO 58.00.
GOATS (BY THE HEAD): LG. 70.00-80.00, SM./MED. 30.00-67.50.
SALE EVERY TUESDAY EVENING 5:00 P.M. RABBITS POULTRY & EGGS 7:00 P.M. LIVESTOCK.

Oklahoma City Feeder Cattle

Oklahoma City, Okla.
Wednesday, April 17, 1991
** ATTENTION DODGE CITY **
OKLAHOMA NATIONAL STOCKYARDS WEEKLY CATTLE SUMMARY COMPARED WITH LAST WEEK: FEEDER STEERS OVER 650 LB. STEADY TO \$2.00 LOWER; STEERS UNDER 650 LB. OPENED STEADY TO \$4.00 LOWER, CLOSED STEADY. HEIFERS OVER 650 LB. \$1.00-\$2.00 LOWER; UNDER 650 LB. \$3.00-\$6.00 LOWER. DEMAND MODERATE FOR MOST OF PERIOD ALTHOUGH UNEVENNESS NOTED MONDAY. QUALITY OF SUPPLY AVERAGE TO ATTRACTIVE. FLESH CONDITION OF FEEDERS AVERAGE TO FLESHY, STOCKERS AVERAGE TO THIN. LARGE RUN THIS WEEK AND ANTICIPATION OF A SIMILAR PATTERN NEXT WEEK LEADS US TO BELIEVE THAT THE MAY RUN WILL BE SOME THREE WEEKS EARLY THIS YEAR; REASONS - WHEAT TOUGHENING EARLY, CATTLE HAVE DONE WELL, PRICE IS HARD TO RESIST. SLAUGHTER COWS \$1.50 LOWER. SLAUGHTER BULLS STEADY. SLAUGHTER CATTLE DEMAND MODERATE. RECEIPTS THIS WEEK 17,196; LAST WEEK 8,911; LAST YEAR 9,009. SUPPLY CONSISTED OF 83% YEARLING FEEDER CATTLE; 14% CALVES AND LIGHT STOCKERS UNDER 600 LB.; COWS AND BULLS 3%. BULK PRICE RANGES FOLLOW:
FEEDER STEERS: MEDIUM & LARGE FRAME 1, LOT 315 LB. THIN \$144.00; 400-450 LB. \$125-\$133.50; 450-500 LB. \$110.50-\$120.00; 500-600 LB. \$103.25-\$114.00; 600-650 LB. \$97.50-\$107.00; 625-700 LB. FEEDERS \$91.75-\$97.00; 700-750 LB. \$89.00-\$94.00; 750-800 LB. \$85.50-\$91.00; 800-900 LB. \$83.00-\$87.75; 900-1000 LB. \$80.50-\$84.00. LARGE FRAME 2 HOLSTEINS, 275 LB. \$120.00; 300-450 LB. \$103.00-\$111.00; 550-575 LB. \$89.00-\$91.75; 600-700 LB. \$82.00-\$89.50; 700-800 LB. \$75.50-

\$79.50; 800-900 LB. \$73.75-\$77.75; 925 LB. \$72.25; 1025 LB. \$68.00.
FEEDER HEIFERS: MEDIUM & LARGE FRAME 1, LOT 335 LB. THIN \$128.00; 350-400 LB. \$109.00-\$113.75; 400-450 LB. \$104.00-\$111.00; 450-500 LB. \$96.00-\$106.50; 500-550 LB. \$95.75-\$106.00; 550-600 LB. \$92.00-\$96.00; 600-650 LB. \$87.00-\$93.00; 650-700 LB. \$84.25-\$88.00; 700-800 LB. \$83.00-\$85.75; 800-875 LB. \$82.00-\$83.75.
SLAUGHTER COWS: CUTTER, BONING AND BREAKING UTILITY Y.G. 1-4 AVERAGE DRESSING \$50.00-\$53.50; HIGH DRESSING \$53.00-\$56.00; LOW DRESSING \$47.25-\$50.50. CANNER AND LOW CUTTER \$44.00-\$47.00.
SLAUGHTER BULLS: Y.G. 1 1325-2125 LB. AVERAGE DRESSING \$62.50-\$66.00; HIGH DRESSING \$66.75-\$70.00; HIGH DRESSING/HIGH BONING \$69.75-\$72.25; LOW DRESSING \$60.00-\$63.00.

Four States Livestock

Hagerstown, Md.

Wednesday, April 17, 1991

Report supplied by Auction

SLAUGHTER COWS: UTILITY 50.00-55.00; HIGH DRESSING 55.00-57.50; CANNERS 46.00-50.00; SHELLY 46.00 DOWN.
BULLS: YG#1 1250-1400 LBS. 64.00-65.50; YG#2 1500-1975 LBS. 58.00-59.00.
FED STEERS: HIGH CHOICE AND PRIME 1200-1400 LBS. 79.00-82.00; LOW CHOICE 74.00-78.00.
FED HEIFERS: CHOICE 1000-1200 LBS. 71.00-72.00; 850-1000 LBS. 67.00-71.00.
VEAL CALVES: CHOICE 160-250 LBS. 101.00-114.00; CULLS 80-120 LBS. 70.00-81.00.
FARM CALVES, HOLSTEIN BULLS: #1 85-120 LBS. 170.00-190.00; #2 85-120 LBS. 125.00-165.00; 75-90 LBS. 105.00-140.00.
HOLSTEIN HEIFERS: 85-120 LBS. 150.00-172.00; BEEF X BULLS 80-120 LBS. 160.00-192.00; HEIFERS 110.00-155.00.

Lancaster Farming, Saturday, April 20, 1991-A7

BUTCHER HOGS: #1 AND 3 215-260 LBS. UP TO 48.00; 270-300 LBS. 40.00-44.00; 180-205 LBS. 42.00-46.00.
SOWS: 300-500 LBS. 43.00-46.50.
BOARS: 400 LBS. UP TO 41.25.
STOCK CATTLE, STEERS: 300-500 LBS. 87.00-99.00; 500-600 LBS. 85.00-97.00; 600-700 LBS. 73.00-86.00; 800-1000 LBS. 65.00-75.00.
HEIFERS: 200-400 LBS. 80.00-102.00; 400-600 LBS. 75.00-89.00; 600-800 LBS. 65.00-75.00.
BULLS: 300-500 LBS. 85.00-104.00; 500-700 LBS. 75.00-89.00; 1 HEREFORD 995 LBS. AT 68.00.
DAIRY REPLACEMENTS: 15 REGISTERED HOLSTEINS MILKING 900.00-1250.00; SPRINGERS, LARGE 950.00-1150.00; SMALL TO MEDIUM 500.00-900.00; SHORTBRED HEIFERS 525.00-810.00; 2 REGISTERED HOLSTEIN BULLS 1000 LBS. AT 810.00; BY THE POUND, 850-1000 LBS. 64.00-65.00.
HOLSTEIN HEIFERS: 200-400 LBS. 85.00-102.00; 400-600 LBS. 70.00-83.00.
LAMBS: CHOICE 90 LBS. UP TO 65.00; 80 LBS. UP TO 75.00.
GOATS: LARGE 60.00-67.00; KIDS 16.00-30.00.
PIG AND SHOATS: BY THE HEAD, 15-30 LBS. 30.00-40.00; 40-50 LBS. 47.00-49.00; 50-60 LBS. 50.00-55.00; 1 LOT 85 LBS. AT 80.00; BY THE POUND, 100-115 LBS. 65.00-75.00.
STOCK BOARS: 220 LBS. UP TO 43.00.
NOTE: NEXT WED., APRIL 24, SPECIAL FEEDER CATTLE SALE. ALREADY PROMISED 2 10 MOS. OLD LIMOUSIN BULLS (RED) PUREBRED, CAN BE REGISTERED; 1 4 YR. OLD LIMOUSIN BULL AND 10 LIMOUSIN X STEERS AND HEIFERS 400-525 LBS; 3 BRED HAMPSHIRE GILTS.

HOLSTEIN HEIFERS: 95-120 LBS. 130.00-167.00; BEEF X BULLS 80-120 LBS. 150.00-204.00; 135 LBS. AT 172.00; HEIFERS 125.00-162.00.
BUTCHER HOGS: US1-3 215-260 LBS. 49.50-50.00; 1 LOT 266 LBS. AT 48.00; 1 LOT 305 LBS. AT 40.75.
SOWS: TOO FEW TO QUOTE.
BOARS: NONE.
STEERS: NO LIGHTWEIGHTS; 500-600 LBS. AT 90.00; 750 LBS. TO 80.00.
HEIFERS: 300-500 LBS. 80.00-91.00; 500-700 LBS. 70.00-86.00; 1 800 LB. HOLSTEIN AT 63.00.
BULLS: 300-500 LBS. 80.00-94.00; 500-700 LBS. 70.00-83.00; 1 1030 LB. AT 62.00.
DAIRY REPLACEMENTS: FEW SPRINGERS 675.00-840.00.
SHEEP: AS IS UP TO 15.50.
PIGS AND SHOATS: BY THE HEAD, 20-30 LBS. 29.00-41.00; 2 LOTS 35 AND 37 LBS. 39.00-51.00; 1 LOT 48 LBS. AT 53.00. RUPTURES 30 LBS. 29.00-40.00; 50-60 LBS. 36.00-55.00; BY THE POUND, 110 LBS. TO 47.00; CULLS 100-170 LBS. 35.00-40.00.

Peoria Cattle

Peoria, Illinois

Thursday, April 18, 1991

FEDERAL STATE CATTLE WEEKLY TRADING MODERATE. COMPARED WITH LAST MONDAY SLAUGHTER STEERS AND HEIFERS MOSTLY STEADY. COWS AND BULLS 1.00 TO 2.00 LOWER. SUPPLY MAINLY SELECT TO AVERAGE CHOICE SLAUGHTER STEERS AND HEIFERS WITH ABOUT 15% COWS. RECEIPTS THIS WEEK ABOUT AS COMPARED WITH 914 A WEEK AGO AND 851 A YEAR AGO.

SLAUGHTER STEERS: CHOICE 2-4 1050-1350 LBS.
78.50-80.50 MIXED SELECT & CHOICE 2-3 1000-1300 LBS. 75.50-78.50
SELECT 2-3 950-1200 LBS. 71.50-75.50
HOLSTEINS: MIXED SELECT & CHOICE 2-3 1150-1350 LBS. 72.50-76.00
SLAUGHTER HEIFERS: CHOICE 2-4 950-1200 LBS. 78.00-80.00
COUPLE PART LOADS 80.25-80.50
MIXED SELECT & CHOICE 2-3 900-1100 LBS. 75.00-78.00
SELECT 2-3 800-1050 LBS. 71.00-75.00

COWS: BREAKING UTILITY & COMMERCIAL 2-4 49.00-55.00
CUTTER & BONING UTILITY 1-3 47.00-52.00
CANNER & CUTTER 1-2 41.00-45.00
FEW SHELLY CANNER 30.00-40.00
BULLS: YG 1-2 1250-2250 LBS. 59.00-68.00.

Frederick Livestock Auction

Frederick, Md.

Monday, April 15, 1991

Report supplied by Auction

SLAUGHTER COWS: UTILITY 50.00-55.00; HIGH DRESSING 55.00-57.75; CANNERS 47.00-50.00; SHELLY 46.00 DOWN.
BULLS: YG#2 1550 LBS. 61.75; 1 1715 LBS. AT 57.75.
VEAL CALVES: LOW CHOICE 300 LBS. TO 94.00; GOOD TO 85.00; CULLS 60-100 LBS. 50.00-60.00; WEAK/ROUGH/THIN 45.00 DOWN.
FARM CALVES: HOLSTEIN BULLS #1 90-125 LBS. 150.00-179.00; #2 110.00-145.00; 75-90 LBS. 100.00-135.00.

A. & C. DIFFENBACH AUCTION INC.

1991

100 W. JACKSON ST., BOX 186 NEW HOLLAND, PA 17557

HAY SALE EVERY MONDAY AND WEDNESDAY - 10:00 A.M.

SAT. APR. 20	9:00 A.M.	ALL NEW MERCHANDISE, HOUSEHOLD ITEMS, GIFTS, TOYS, TOOLS
SAT., APR. 27	9:00 A.M.	ANTIQUES AND HOUSEHOLD ITEMS- MARVIN OVERLY
SAT., MAY 4	9:00 A.M.	20 YEAR TRAIN COLLECTION AUCTION-G. MARTIN
FRI., MAY 10	9:00 A.M.	FARM EQUIPMENT AUCTION
TUES., MAY 21	9:00 A.M.	QUILT, CRAFT & BUGGY AUCTION-BUGGIES 1 P.M.
WED., MAY 22	9:00 A.M.	QUILT, CRAFT AUCTION
WED., JUN. 5	6:00 P.M.	WHOLESALE WOOD FURN. & CRAFT ITEMS AUCTION
FRI., JUN. 7	9:00 A.M.	FARM EQUIPMENT AUCTION

PHONE (717) 355-7253-OFFICE (717) 354-3297 HOME FAX #355-9547

ALAN DIFFENBACH AUCT. - AU2258-L

C.B. HOOBER & SON, INC.
Intercourse, PA
(717) 768-8231

HOOBER
TWO LOCATIONS

HOOBER EQUIPMENT, INC.
Middletown, DE
(302) 378-9555

The Saving Place

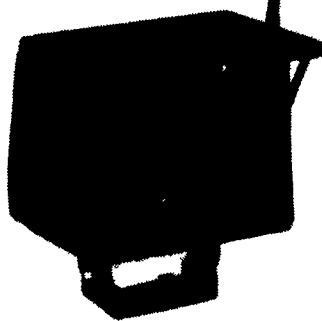
FENDER-MOUNT RADIO Works as hard as you do!

This weather-proof, steel-encased AM/FM/Cassette system mounts right on your fender. So you can keep up with the news...enjoy music...and catch the latest weather report from anywhere on your property. The stereo features two built-in speakers and a universal mounting setup to fit any piece of equipment. This rugged radio will perform in even the harshest conditions...and still sound great. (Includes antenna)

ZVX300TRA

\$112⁰⁰

List price \$124.99
Save 10%



WE BEGIN TO LIVE WHEN WE BEGIN TO LOVE

WE SHIP PARTS DAILY

Via FED. EXP. - UPS - PPSH - BUS - AIR FREIGHT, ETC.

HOURS

Mon.-Fri. 7 AM-5 PM; Sat. 7 AM-Noon



Authorized UPS Station

CALL US...
It Could Be We Have It



ATTENTION CATTLE FEEDERS

SPECIAL GRADED FEEDER SALE

Friday, April 26, 1991

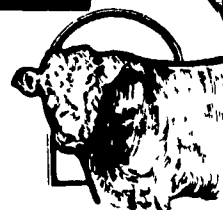
100 Calves From NY State, 400-600 Lbs., Heifers & Steers;
60 Crossbred Calves, From Berks County, 400-600 Lbs.,
Heifers & Steers;

Also 25 Other Local Cattle

Walter M. Dunlap and Sons

Lancaster Stockyards Tel. (717) 397-5136

An Old Line Commission Firm Keeping Abreast With The Times



MARTIN ELECTRIC PLANTS

150 KW Detroit Diesel - Very Good Engine - Used \$9500

GENERATOR SETS FOR SALE

- 150 KW Detroit Diesel-Used
- 100 KW Detroit Diesel
- 12V7IN Long Life RPM-900
- 60 KW Isuzu Diesel-Used
- 150 KW Murphy Diesel-Used
- 100 KW Murphy Diesel-Used
- 25 KW Isuzu Diesel-New

RD #2 Box 28 Pleasant Valley Rd., Ephrata, PA 17522
Tel: 717-733-7968 Fax: 717-733-1981