

Acres Of Spring At Longwood Gardens

KENNETT SQUARE (Chester Co.) — Spring can be found around every corner at Longwood Gardens, where flowering trees and shrubs, beds of brilliant bulbs, and dozens of bubbling fountains offer an abundance of outdoor delights.

A stroll through the newly awakened gardens set on 1,050 acres reveals daffodils and other bulbs naturalized in the landscape. Tulips provide a colorful peak in mid- to late April, followed by brilliant azaleas and rhododendrons in May. Daily hours are 9 a.m. to 6 p.m.

Longwood's horticulturists have been preparing for the spring season since last fall, when more than 200,000 bulbs were planted. A crew of seven spent five days drilling holes and planting bulbs to create drifts of varying colors and heights throughout the grounds.

Flower shows presented by outside organizations include a Federated Garden Clubs Standard Show on April 20-21; daffodils on April 26-27; rhododendrons on May 12; Ikebana on May 18-19; and irises on May 26.

Longwood Gardens is located on U.S. Route 1 near Kennett Square, Pa., 30 miles west of Philadelphia in the historic Brandywine Valley. Daily hours for the outdoor gardens are 9 a.m. to 6 p.m., and the conservatories from 10 a.m. to 5 p.m.

Gardens admission is \$8 for adults, \$2 for children ages 6-14, and free for children under age 6.

For a complete schedule of events, send a self-addressed



A leisurely stroll through Acres of Spring at Longwood Gardens, Kennett Square, offers fanciful topiary, spectacular flowering trees such as these lilac-blossomed paulownias shown here, thousands of flowers, and sparkling fountains.

stamped business envelope to Longwood Gardens, P.O. Box 501, Kennett Square, PA 19348.

For further information, call (215) 388-6741.

Newsletter For Child Care Providers

Caregiver News is the title of a brand new newsletter that has been developed specifically for people who provide day care for children. It is available from the Penn State Cooperative Extension Office in Bradford County.

Caregiver News is available free of charge from the Bradford County Cooperative Extension Office. An issue will be mailed every other month to interested persons. To be put on the mailing list to receive the newsletter call or

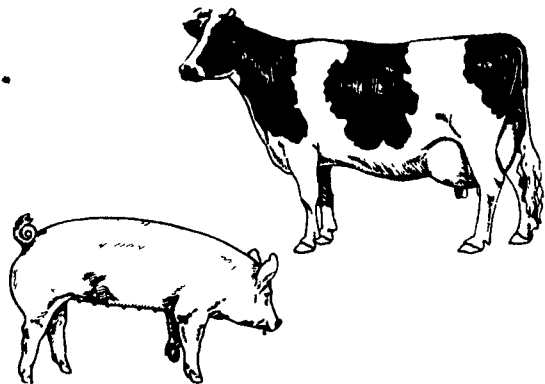
mail in your name and address to Bradford County Cooperative Extension Office, P.O. Box 69, 701 South Fourth Street, Towanda, PA 18848, phone (717) 265-2896.

Problem Water?

Odor? Bad Taste? Stains? Iron? Manganese? Mineral Buildup? Color? Bacteria? Virus? Harmful Micro-organisms? Hydrogen Sulfide? THM Precursors? Other Contaminants?

Do You Have Any Problems With:

- * Scours
- * Digestion
- * Mastitis
- * Breeding
- * Small Litter Size
- * Too Much Medication
- * Milk Production
- * Poor Feed Efficiency
- * Algae in Drinking Cups
- * Bad Conception Rate



Could Water Be Your Problem?
Complete Farm Water Treating System

A Farm Water System that is designed to clean the water on your farm with one of nature's most powerful purifying agents — Condensed Oxygen (Ozone).



335 Quarry Rd., Leola, Pa. 17540
717-656-8380

Protect Your Health When You Clean Your Home

WILKES-BARRE (Luzerne Co.) — There are many cleaning products lining the shelves today in the supermarkets.

Consumers need to select products based on effectiveness of cleaning, safety of use, and cost. Sometimes safety, however, is outweighed by how quickly the cleaning job gets done.

Manufacturers list the words caution, warning, and danger on labels of many household cleaning products.

Caution describes a product which is less harmful or toxic than those labeled with danger. Two tablespoons to a pint is a lethal dosage.

Products which have labels with the word warning need only one teaspoon to one tablespoon to be a toxic dosage. And products with danger listed on the label require only one drop to one teaspoon as a lethal dosage.

Other factors such as weight, age, and general health will also determine whether a product will cause death if ingested. A child will be much more susceptible than an adult.

Cleaning products can also be described as hazardous. Flammable, corrosive, caustic, poisonous, and irritant are also listed on the labels of some of our weekly cleaning products. Automotive products, household cleaners, paints and solvents, and pesticides

are categories of hazardous household products.

Poisons from these cleaning solutions can enter our bodies in a number of ways. Toxins can be ingested by eating or drinking hazardous substances or contaminated food and water. Always be sure to keep food, drinks, or other things that enter your mouth away from the work area to avoid contamination.

Toxins can also be inhaled in the form of gases, vapors, and sprays. Good ventilation is essential when using hazardous products. If possible, work outside. If you work inside, use a fan to direct air away from the work area to the opened windows.

Toxins can be also absorbed through skin contact with hazardous substances. Hazardous products containing corrosives or irritants will injure the skin and then be slowly absorbed into the body tissues and bloodstream.

Read the label on cleaning products you normally use. Be informed of possible dangers associated with using commercial cleaning products.

For more information on hazardous chemicals in the home and substitutions you can make to reduce health risks when cleaning, call Penn State Cooperative Extension of Luzerne County at (717) 825-1701 or (717) 459-0736 ext. 701.

Herb Growing, Marketing Network

LANCASTER (Lancaster Co.) — Herb businesses and enthusiasts will now have a new resource guide: the first annual edition of "The Herbal Green Pages."

Just released by The Herb Growing and Marketing Network, this resource has more than 2,000 herb business listings as well as herbal education programs, herbal associations, periodicals and more. Descriptions include whether a

business wholesales or retails, products, and whether mail order is available. It's part of the \$40 package offered by the HGMN, which also includes a subscription to the bimonthly trade periodical, "The Herbal Connection." Or it can be purchased separately for \$15 (postage and handling included). Send your check to The Herbal Connection, 3343 Nolt Rd., Lancaster, PA 17601, or call (717) 898-3017 for more information.

Tractor and Truck Pull SUNDAY, APRIL 28, 1991

RAIN DATE - SUNDAY, MAY 5, 1991

CASH PRIZES

FARM STOCK-9:30 A.M. SHARP
POINT PULL-1:00 P.M.

Refreshments Available
No Pets



No Glass Containers
NO KEGS!

Carroll County Agriculture Center
Westminster, MD

Local Farm
Stock Only

6,000 lb.
8,000 lb.
10,000 lb.
16,000 lb.

Point Classes

7,200 Modified
6,200 4W.D.
9,500 Superstock &
10,350 lb. Pro Stock
6,200 2 W.D.

Admission

\$7.00
\$5.00 Senior Citizens;
4-Hers Cards and
7-12 yrs.
FREE 6 Yrs. & Under
(with guardian)

ALL TRACTORS CHECKED \$5.00 HOOK-UP FEE

CONTACT FOR RULES AND REGULATIONS
NEVIN TASTO JIMMY BURNETT HARRY FRITZ
374-4067 795-3284 848-8985