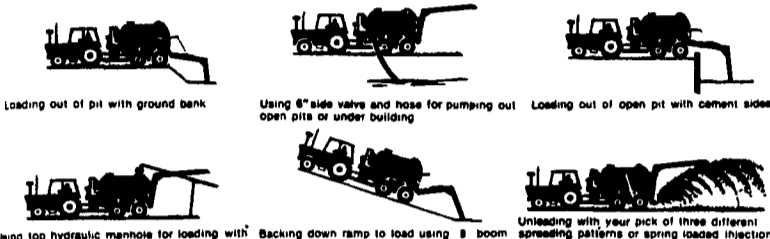


# THE 2900 SLURRY BUGGY

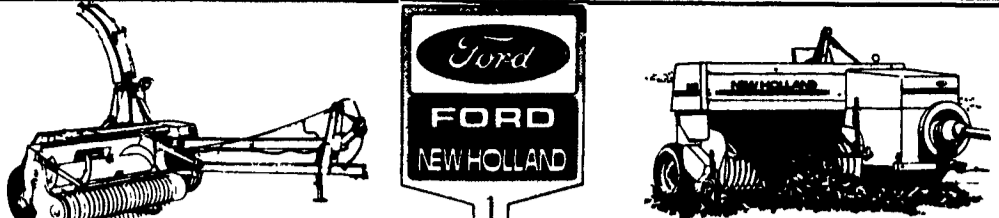


HAUL LIQUID MANURE ALL DAY WITHOUT GETTING OFF THE TRACTOR SEAT USING THE SLURRY BUGGY EASY LOADER. THE SLURRY BUGGY IS DESIGNED FOR YOUR MANY LIQUID MANURE HANDLING JOBS.



We Have Spreaders To Rent - 1500 & 2900 Gallon FOR FREE LITERATURE CALL OR WRITE

**SLURRY BUGGY EQUIPMENT COMPANY**  
194 S. Croftdale Rd. Locka, PA  
PHONE 717 656 3249

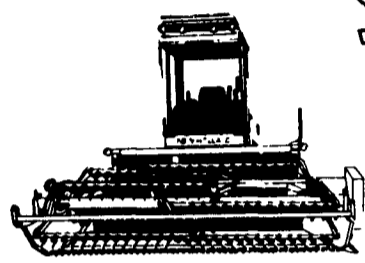


## FANTASTIC SPRING SPECIALS

### CALL FOR PRICES

*We have a large inventory for you to survey when purchasing your new equipment.*

Free Financing Hay & Forage Equipment til 6/1/91  
or  
Finance Rates: 0% - 12 Months- Grinders & Spreaders  
0% - 18 Months- Hay Equip. Only  
or  
Check with us for Big Cash Rebate Amounts



## DEPENDABLE MOTOR CO.

East Main St., Honey Brook, Pa.  
215/273-3131 or 215/273-3737

**1a CONSTRUCTION EQUIPMENT**

**HOURS:**  
MON-FRI 7:30 To 5:00  
SAT 7:30 To NOON

# WENGBERS INC.

251 SOUTH RACE STREET, MYERSTOWN, PA. 17067  
PH: 717-866-2130 FAX 717-866-4300

NIGHTS:  
PHONE:  
717-866-7147  
or  
717-273-9089

**(14) DOZERS**

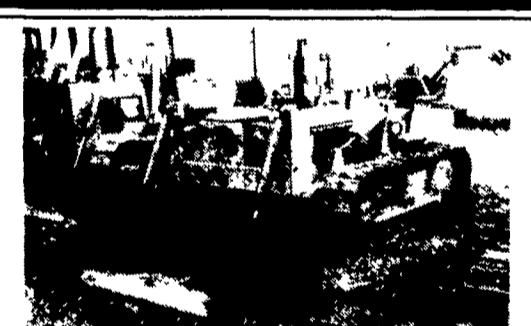
- MF 200.....\$3900
- (2) IH 500 Diesel 6-Way.... \$3000-\$6000
- (2) JD 440\$4950 to \$5900
- Case 350.....\$8500
- Cat D4D.....\$9500
- Case 450.....\$11,500
- Case 450B-6 Way..\$17,500
- Case 850C.....\$22,500
- JD 450D-6 Way..\$22,500
- JD 450E.....\$24,500
- Cat D5B.....\$29,500
- IH TD 25C w/Ripper .....\$49,500

**(13) CRAWLER LOADERS**

- JD 350.....\$4900
- JD 450.....\$7900
- Case 450.....\$8900
- IH 175B.....\$8900
- JD 450.....\$9900
- Cat 931-Cab.....\$11,900
- IH 125C.....\$12,900
- JD 555.....\$16,500
- Case 850B.....\$18,500
- Cat 955L.....\$18,500
- Cat 941B.....\$19,500
- Cat 977L-Ripper.....\$29,500
- Cat 983 w/Cab.....\$35,000

**(14) BACKHOES**

- (6) Rigid Hoe Attachments .....\$2500 & Up
- (6) 3 Pt. Hoe Attachments .....\$2500 & Up
- Case 530CK.....\$3500
- MF 300 Gas.....\$3500
- IH 3500.....\$4800
- AC 715C.....\$5500
- Walroy.....\$5900
- Case 580CK.....\$7500
- AC 715B.....\$8500
- IH 3600 Ext.....\$9500
- IH 260A.....\$11,500
- JD 410 Cab.....\$11,500
- Case 680G.....\$13,500
- Case 580D.....\$14,500
- Case 580D 4x4.....\$20,000
- Case 580K 4x4.....\$24,500



International 500 Diesel Dozer/Loader 6 Way Blade, Like New Loader Bucket, Power Take Off, Runs Good.  
**MUST GO \$6,000**



Allis Chalmers "D" Grader, Gas Engine, Operates OK.  
**ONLY \$4,900**

- (4) SKID STEER LOADERS**
- Clark 533-Diesel....\$4900
  - NH 555 Diesel.....\$8900
  - Case 1845.....\$8900
  - NH 785 Diesel....\$10,000

**MISC. CONSTRUCTION**

- (100+) Used Hoe Buckets.. Come Look
- (75) Loader Buckets.. Come Look
- (75) Set Forklift Forks..... Come Look
- Ford 4500 Frost Tooth.....\$395
- 3 Pt. Hitch For Case 580.....\$695
- JD 640B Log Skidder Blade..\$1000
- Root Rake 7'.....\$1400
- Ripper.....\$1500
- (3) Tree Planters .... \$350-\$650
- (2) Tree Shearer. \$1500-\$3500
- Giant Leaf Vacuum's-..... 2 For \$2000
- Sheepsfoot Roller..\$3900
- Schramm 160 Air Comp.....\$3900
- Snowblower For Big Loader.....\$3900
- (2) Sweepers .....\$600 to \$2900
- Woodchuck 12" Wood Chipper.....\$4500
- 1-2 Ton Vibratory Roller.....\$4900
- Huber Maintainer..\$4900
- Sheepsfoot Roller..\$4900
- AC D Grader.....\$4900
- Jeagar 175 Diesel Compressor.....\$4900
- Construction Ramp.....\$7500
- American Lincoln Sweeper.....\$11,500
- JD 760 Scraper..\$13,700

**NEW EQUIPMENT**

- Boom Poles.....\$125
  - King Kutter Scraper Blades 6', 7' And 8' ..... \$225-\$995
  - (3) Pt. Seeders- Broadcasters- 3 Pt.....\$395
  - King Kutter Stone Rakes 4', 5', 6', 7' & 8'..... \$395-\$595
  - King Kutter Post Hole Diggers 6", 9" And 12" Augers.....\$495
  - King Kutter Discs 5 1/2' And 6 1/2' - 3 Pt..... \$495-\$595
  - King Kutter Grading Boxes 4', 5 1/2', 6', 7' & 8'. \$495-\$595
  - King Kutter Rotary Mowers 4', 5' And 6' 3 Pt. And Pull Type..\$595 & Up
  - Aerator 5'- 3 Pt.....\$695
  - King Kutter Finish Mowers 4', 5', 6' & 7'- 3 Pt..... \$995-\$1295
  - Long Rototillers 55", 63", & 71"..... \$1495-\$1995
- (7) LOG SKIDDERS**
- Tree Farmer.....\$2900
  - Pettibone PT 18....\$3900
  - Tree Farmer C5D..\$4900
  - Clark Ranger 664B.....\$9500
  - Clark Ranger 666B.....\$9500
  - (2) JD 540B w/ Grapple .....\$12,500/\$14,500

**HUNDREDS OF CRAWLERS & BACKHOES FOR SALVAGE**

**EXCELLENT SELECTION OF AFFORDABLE USED EQUIPMENT**